

0.5± ACRE LOT IN COLLINS COVINGTON COUNTY, MS



This 0.50± acre lot in Covington County offers easy street access, making it perfect for building a home. Conveniently located just off Highway 49 in Collins, MS, and near various restaurants, it's also an excellent opportunity for adding a rental property to your portfolio. Additional lots available.



COLBY
WATSON

REALTOR®

Office: 601.898.2772

Cell: 601.668.8096

Colby@TomSmithLand.com



Expect More. Get More.

A Real Estate Expert You Can Trust

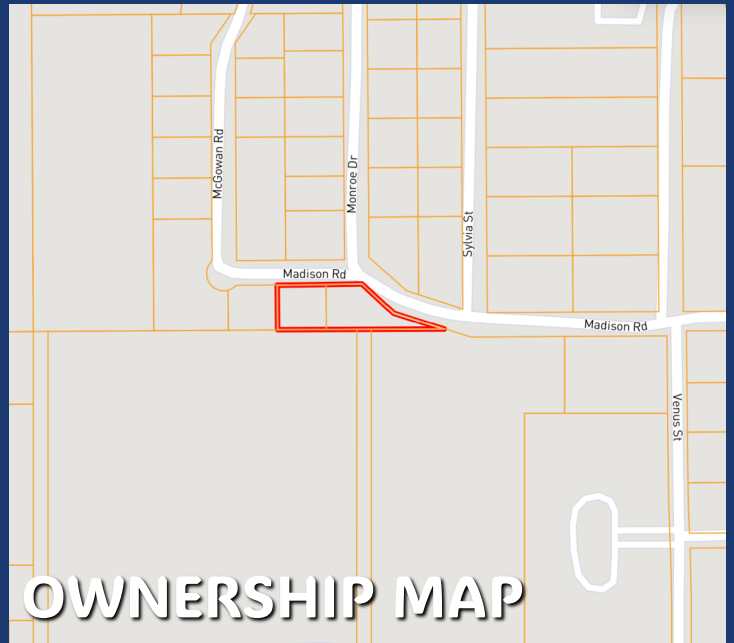
TomSmithLandandHomes.com

Information is believed to be accurate but not guaranteed.

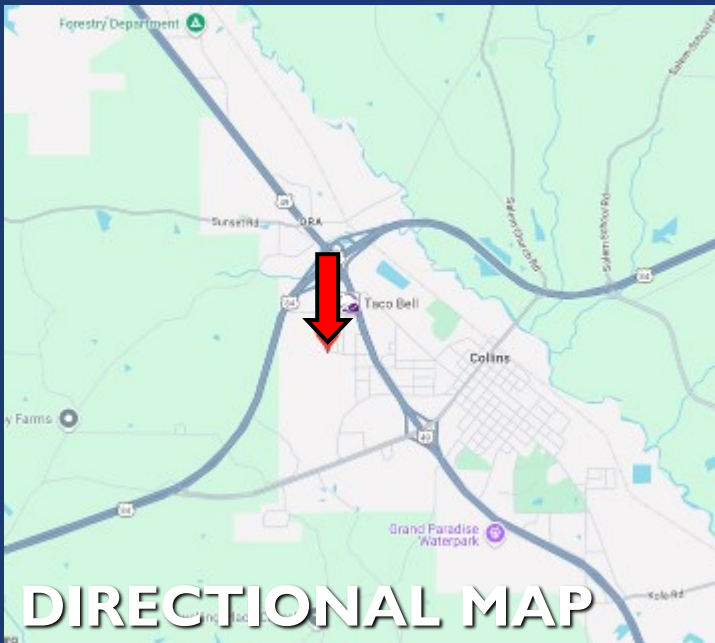




AERIAL MAP



OWNERSHIP MAP



DIRECTIONAL MAP

Directions from the intersection Hwy 49 and Hwy 84 in Collins, MS: Travel southeast on Hwy 49 for 0.5 miles Turn right onto Sylvania St. and trave 0.3 miles. Turn right onto Madison Rd. After .1 miles, the property will be on your left.

[Google Map Link](#)

[Click Here for the LandId Interactive Map Link](#)



**COLBY
WATSON**

REALTOR®

Office: 601.898.2772

Cell: 601.668.8096

Colby@TomSmithLand.com



Expect More. Get More.

A Real Estate Expert You Can Trust

TomSmithLandandHomes.com

Information is believed to be accurate but not guaranteed.

