



2830 FM 1293 RD., KOUNTZE, TX 77625
HARDIN COUNTY

20± ACRES | \$596,100





THE INFORMATION PROVIDED HEREIN IS BELIEVED TO BE ACCURATE BUT IS NOT GUARANTEED BY ANDRUS LAND GROUP. DETAILS ARE SUBJECT TO CHANGE AT ANY TIME WITHOUT NOTICE.

PROPERTY DESCRIPTION.

Discover this exceptional 20-acre equestrian estate, a true paradise for horse enthusiasts. Featuring a modern 1-bed 1-bath barndominium, this property includes an attached 40x60 insulated workshop with an office, bathroom, and laundry facilities. The impressive 45x85ft insulated barn boasts 6 spacious stalls equipped with fans, automatic waterers, & a climate-controlled tack room, feed room, and restroom. Equestrian amenities are abundant, with a 70 ft round pen, an 80x200ft arena (including 100 ft covered), and 8 cross-fenced pastures ideal for rotational grazing. A cozy 2-bed 1-bath bunkhouse offers additional living space for guests. Enjoy a 3/4 acre stocked pond, fruit trees, and 4 RV hook-ups with 30-amp service. A 360 ft well with whole-house filtration ensures reliable water supply. This estate perfectly blends comfort and functionality, providing an idyllic ranch lifestyle with ample space for horses and outdoor activities. Call us now to schedule a viewing!



THE INFORMATION PROVIDED HEREIN IS BELIEVED TO BE ACCURATE BUT IS NOT GUARANTEED BY ANDRUS LAND GROUP. DETAILS ARE SUBJECT TO CHANGE AT ANY TIME WITHOUT NOTICE.



THE INFORMATION PROVIDED HEREIN IS BELIEVED TO BE ACCURATE BUT IS NOT GUARANTEED BY ANDRUS LAND GROUP. DETAILS ARE SUBJECT TO CHANGE AT ANY TIME WITHOUT NOTICE.

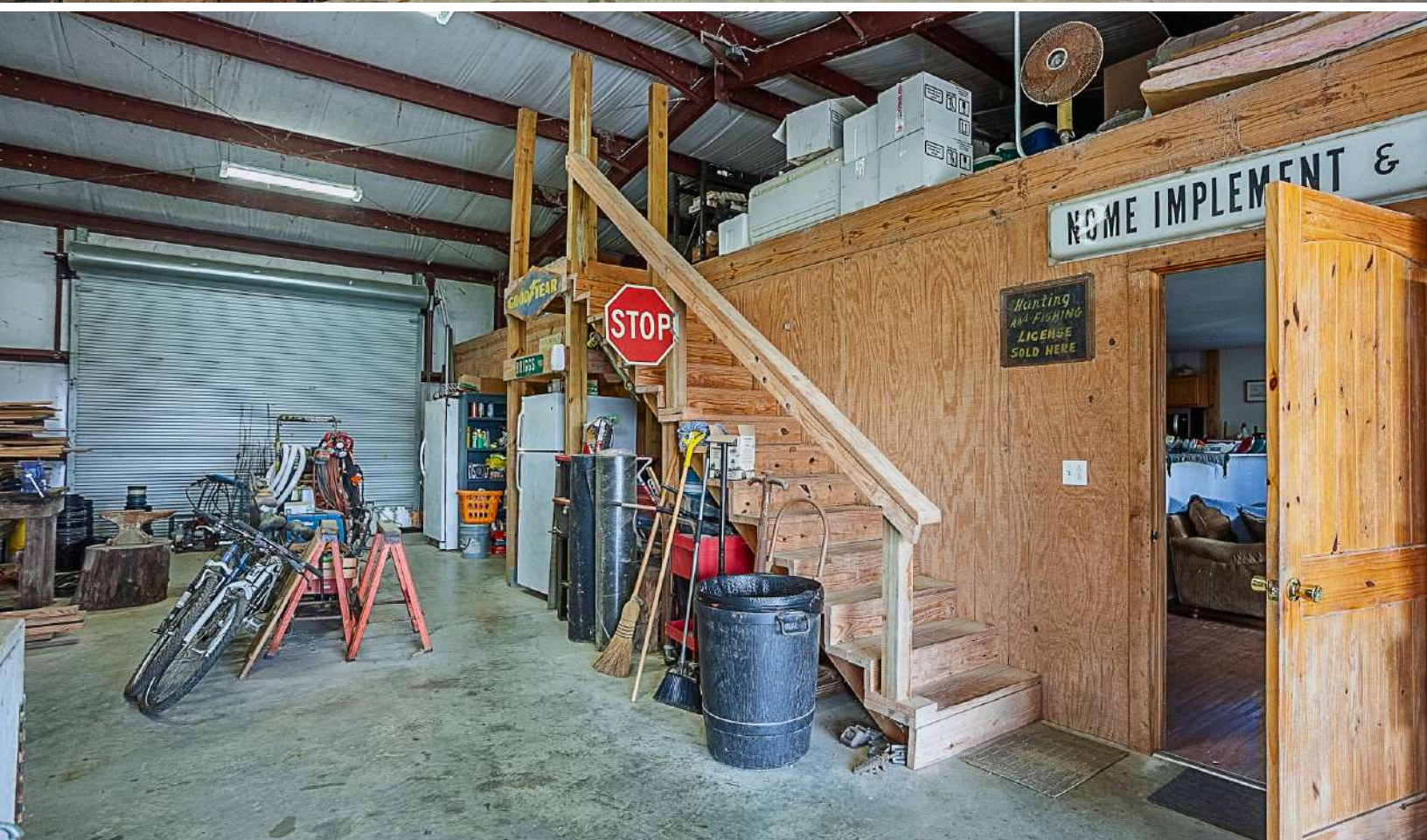


PROPERTY FEATURES

Barn, Electricity, Work Shop, Water Well, Fishing, Pond, Equine Facilities, Arena, Hwy-County Rd Frontage, Guest Ranch, Cabins



THE INFORMATION PROVIDED HEREIN IS BELIEVED TO BE ACCURATE BUT IS NOT GUARANTEED BY ANDRUS LAND GROUP. DETAILS ARE SUBJECT TO CHANGE AT ANY TIME WITHOUT NOTICE.



THE INFORMATION PROVIDED HEREIN IS BELIEVED TO BE ACCURATE BUT IS NOT GUARANTEED BY ANDRUS LAND GROUP. DETAILS ARE SUBJECT TO CHANGE AT ANY TIME WITHOUT NOTICE.

2830 FM 1293 RD., KOUNTZE, TX 77625

HARDIN COUNTY



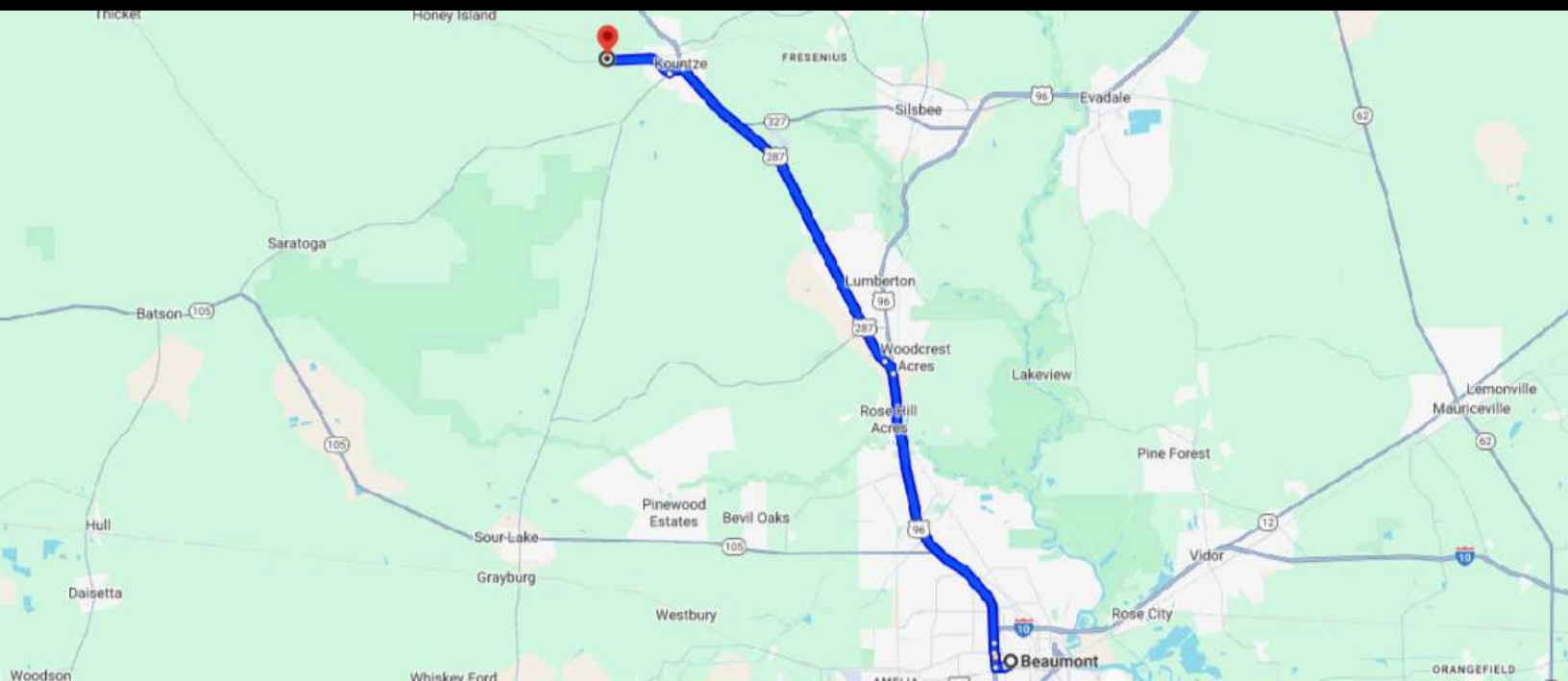
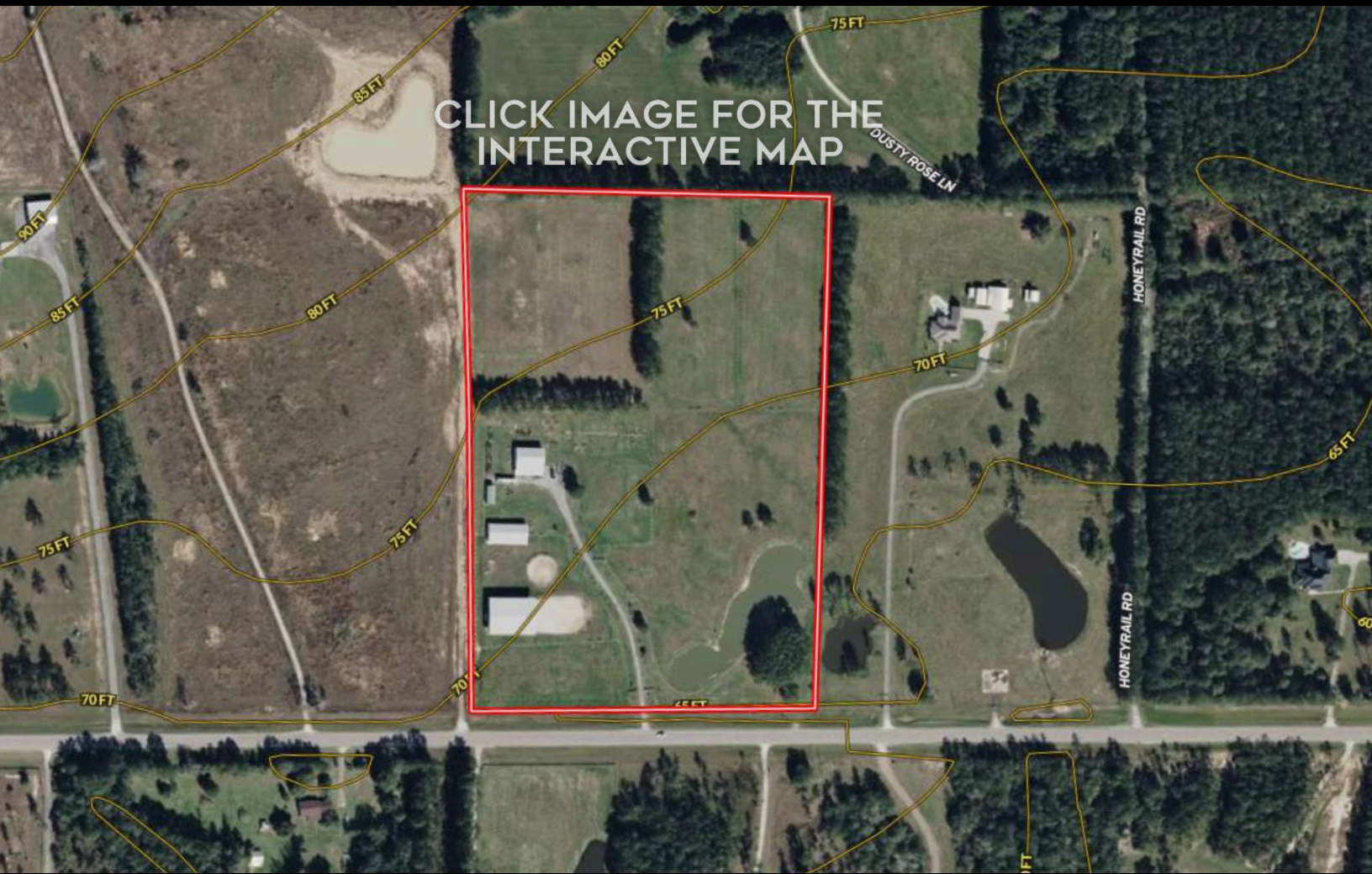
PROPERTY TYPE

Acreage, Equestrian Property, Recreational Land, Ranch, Cattle Ranch, Commercial Acreage

THE INFORMATION PROVIDED HEREIN IS BELIEVED TO BE ACCURATE BUT IS NOT GUARANTEED BY ANDRUS LAND GROUP. DETAILS ARE SUBJECT TO CHANGE AT ANY TIME WITHOUT NOTICE.



THE INFORMATION PROVIDED HEREIN IS BELIEVED TO BE ACCURATE BUT IS NOT GUARANTEED BY ANDRUS LAND GROUP. DETAILS ARE SUBJECT TO CHANGE AT ANY TIME WITHOUT NOTICE.



NAVIGATION DIRECTIONS

From Beaumont, TX:

Take US-287 N/US-69 N/US-96 N north for 23.3 miles. Turn left onto TX-326 S and continue for 0.5 miles. Turn right onto FM 1293, property is on the right.

CHAD ANDRUS, ALC ACCREDITED LAND CONSULTANT

chad@andruslandgroup.com

832-402-9211

www.andruslandgroup.com



ALL MATERIALS AND INFORMATION RECEIVED OR DERIVED FROM ANDRUS LAND GROUP AND ITS DIRECTORS, OFFICERS, AGENTS, ADVISORS, AFFILIATES AND/OR ANY THIRD PARTY SOURCES ARE PROVIDED WITHOUT REPRESENTATION OR WARRANTY AS TO COMPLETENESS, VERACITY, OR ACCURACY, CONDITION OF THE PROPERTY, COMPLIANCE OR LACK OF COMPLIANCE WITH APPLICABLE GOVERNMENTAL REQUIREMENTS, DEVELOPABILITY OR SUITABILITY, FINANCIAL PERFORMANCE OF THE PROPERTY, PROJECTED FINANCIAL PERFORMANCE OF THE PROPERTY FOR ANY PARTY'S INTENDED USE OR ANY AND ALL OTHER MATTERS. NEITHER ANDRUS LAND GROUP, ITS DIRECTORS, OFFICERS, AGENTS, ADVISORS, OR AFFILIATES MAKES ANY REPRESENTATION OR WARRANTY, EXPRESS OR IMPLIED, AS TO ACCURACY OR COMPLETENESS OF THE MATERIALS OR INFORMATION PROVIDED, DERIVED, OR RECEIVED. MATERIALS AND INFORMATION FROM ANY SOURCE, WHETHER WRITTEN OR VERBAL, THAT MAY BE FURNISHED FOR REVIEW ARE NOT A SUBSTITUTE FOR A PARTY'S ACTIVE CONDUCT OF ITS OWN DUE DILIGENCE TO DETERMINE THESE AND OTHER MATTERS OF SIGNIFICANCE TO SUCH PARTY. ANDRUS LAND GROUP WILL NOT INVESTIGATE OR VERIFY ANY SUCH MATTERS OR CONDUCT DUE DILIGENCE FOR A PARTY UNLESS OTHERWISE AGREED IN WRITING. EACH PARTY SHALL CONDUCT ITS OWN INDEPENDENT INVESTIGATION AND DUE DILIGENCE.

Ranch. financing made simple



WINNIE OFFICE

NMLS493828 | 409.400.4066 | capitalfarmcredit.com



Anthony Vaughan