



Multi-Use Property in Flora

1.94± Acres in Madison County, MS

\$997,000



**TOM
SMITH**

ALC®, BROKER

Office: 601.898.2772

Cell: 601.454.9397

Tom@TomSmithLand.com



Expect More. Get More.

Call The Land Man Today!

TomSmithLandandHomes.com

Information is believed to be accurate but not guaranteed.





This 13,700-square-foot gymnasium, built in approximately 1970, features original locker rooms, bleachers, and concession facilities. It is located on 1.94± acres within Flora's city limits and offers prime frontage on Fourth and Jackson Streets. The property lies within the new Flora Station and is ideal for adaptive reuse projects such as a community center, fitness facility, condominiums, or an event venue, providing opportunities for creative redevelopment. Recent investments in Flora, including Entergy Mississippi's \$30 million project and the Amazon/Megasite facility, underscore the area's growth and development potential. The property is currently being leased and generating monthly income, offering additional potential revenue for future owners. Call The Land Man to schedule your tour today!



The Land & Homes Expert
You Can Trust!

TOM SMITH

ALC®, BROKER

O: 601.898.2772 C: 601.454.9397

Tom@TomSmithLand.com

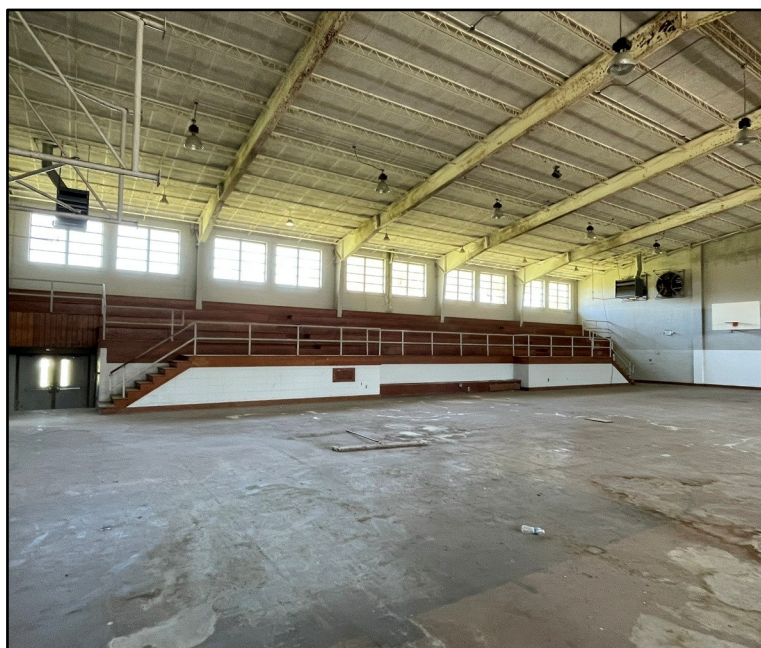
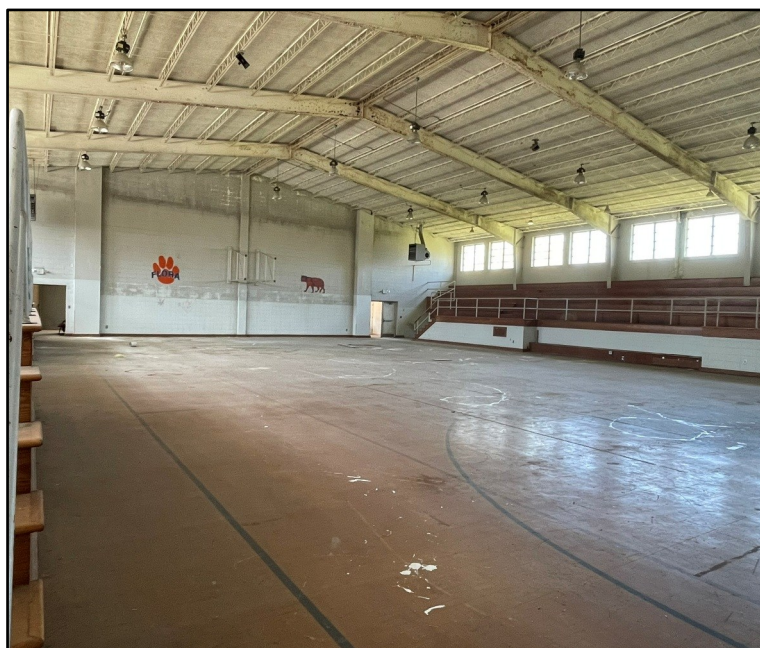
TomSmithLandandHomes.com



Expect More. Get More.



Information is believed to be accurate but not guaranteed.



The Land & Homes Expert *You Can Trust!*

TOM SMITH

ALC®, BROKER

O: 601.898.2772 C: 601.454.9397

Tom@TomSmithLand.com

TomSmithLandandHomes.com

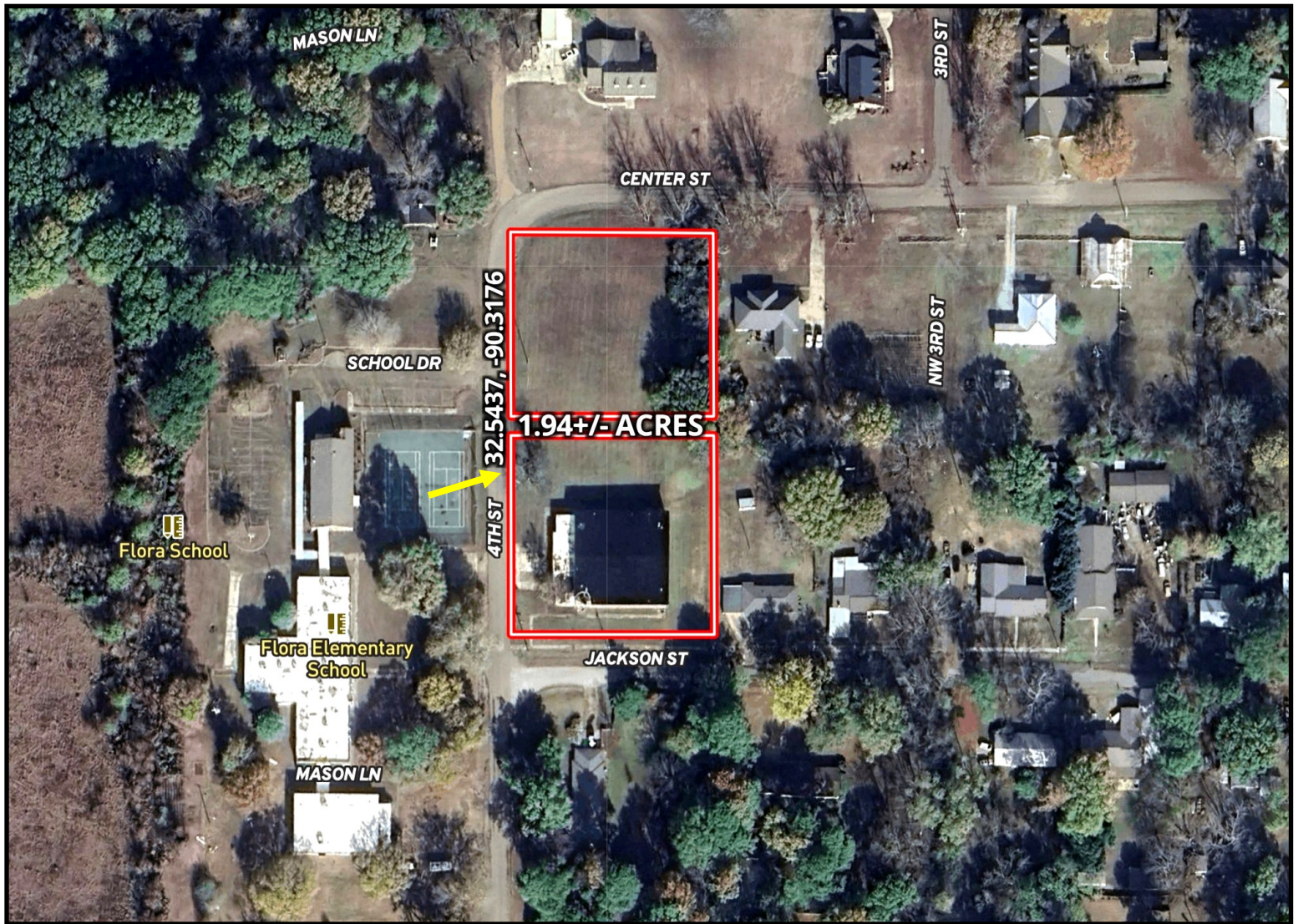


Expect More. Get More.



Information is believed to be accurate but not guaranteed.

Aerial Map



[CLICK HERE FOR THE LANDID INTERACTIVE MAP](#)

The Land & Homes Expert
You Can Trust!

TOM SMITH

ALC®, BROKER

O: 601.898.2772 C: 601.454.9397

Tom@TomSmithLand.com

TomSmithLandandHomes.com

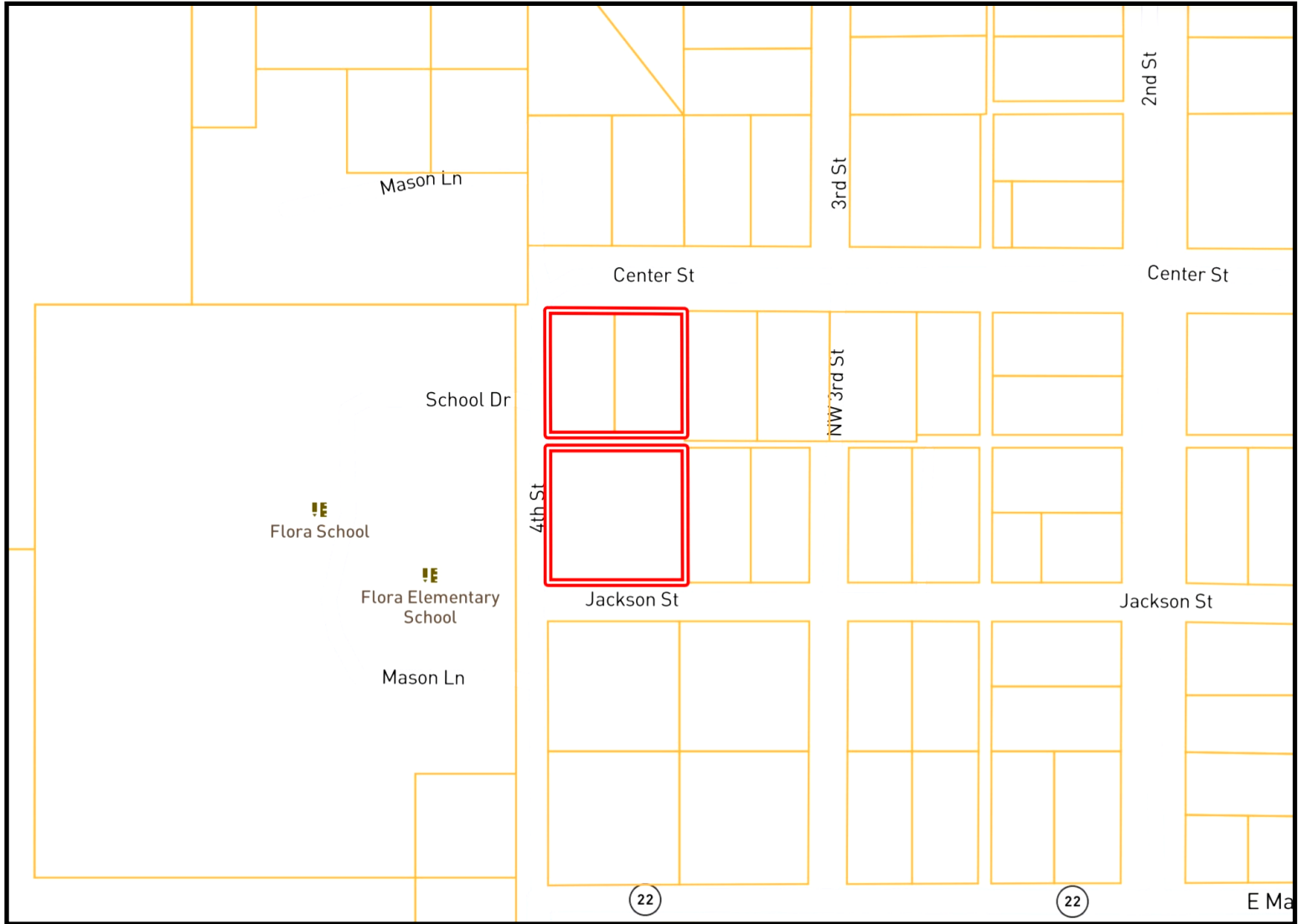


Expect More. Get More.



Information is believed to be accurate but not guaranteed.

Ownership Map



The Land & Homes Expert
You Can Trust!

TOM SMITH

ALC®, BROKER

O: 601.898.2772 C: 601.454.9397

Tom@TomSmithLand.com

TomSmithLandandHomes.com

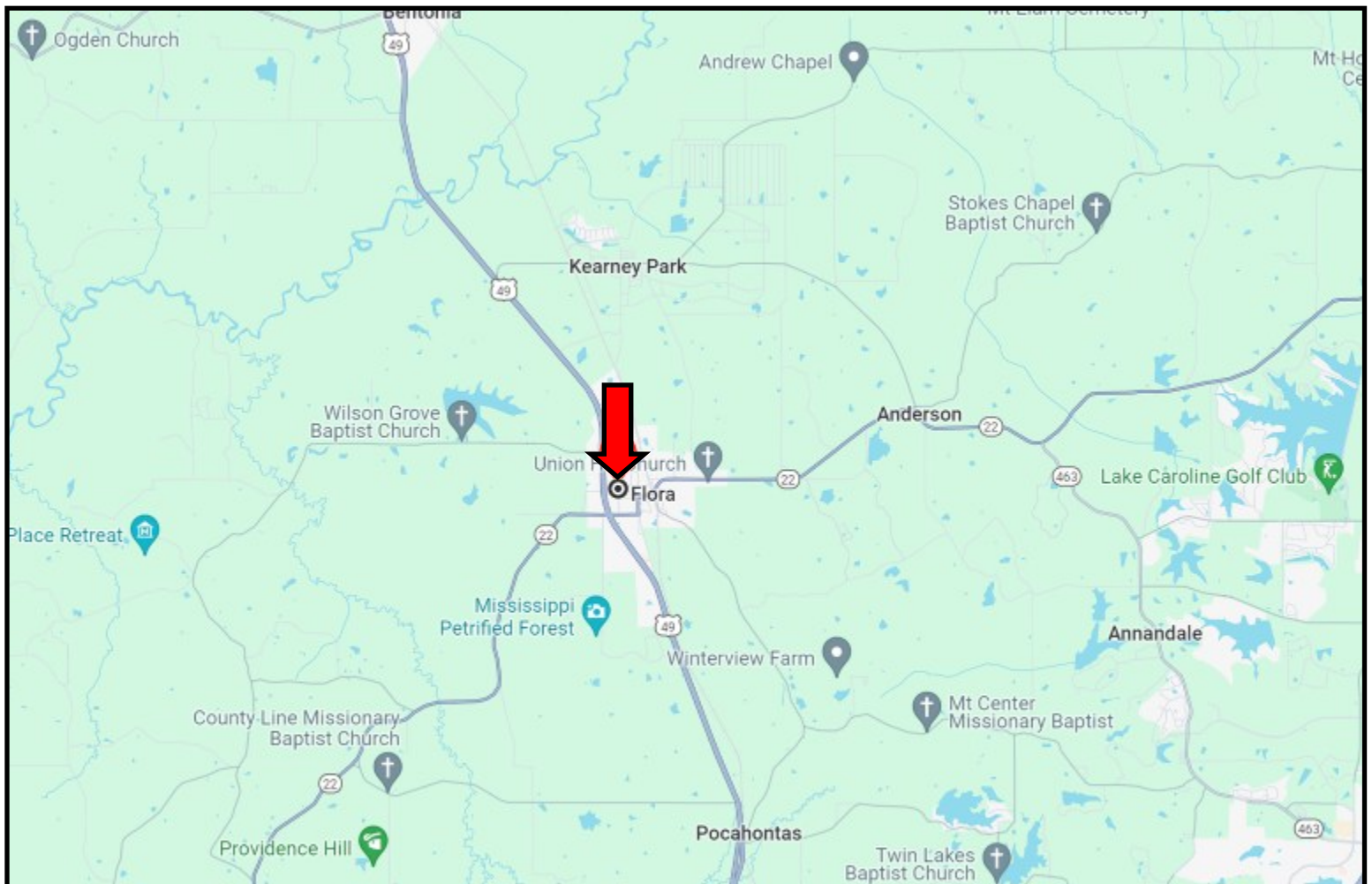


Expect More. Get More.



Information is believed to be accurate but not guaranteed.

Directional Map



Directions from Hwy 49 and Hwy 22 in Flora, MS: Turn right onto Hwy 22/Peach Street and travel .1 mile. Turn left onto SW Fourth Street. After 0.4 miles, the property will be on the right. [GOOGLE MAP LINK](#)



**TOM
SMITH**

ALC®, BROKER

Office: 601.898.2772

Cell: 601.454.9397

Tom@TomSmithLand.com



Expect More. Get More.

Call The Land Man Today!

TomSmithLandandHomes.com

Information is believed to be accurate but not guaranteed.

