

Charming Home in the Patton Place Subdivision

654 Bruin Avenue Pearl, MS 39208 | \$199,000



Explore this charming 3-bedroom, 2-bathroom, 1,548-square-foot home in the Patton Place Subdivision in the heart of Pearl within Rankin County. The house was recently upgraded with new wood laminate flooring in the living room and hallway, and the bedrooms offer plush carpeting. Benefit from the convenience of a 2-vehicle carport and an additional concrete slab for parking. The dining area is bright and provides plenty of natural light. The backyard features a covered sitting area and a well-equipped shop with power. With a few cosmetic updates, this home would be perfect for any family. The home is conveniently near dining options and attractions like the MS outlets, Trustmark Park, and Bass Pro Shops. Call Colby to schedule your showing today!



**COLBY
WATSON**
REALTOR®

Office: 601.898.2772

Cell: 601.668.8096

Colby@TomSmithLand.com



A Real Estate Expert You Can Trust

TomSmithLandandHomes.com

Information is believed to be accurate but not guaranteed.





COLBY WATSON

REALTOR®

Office: 601.898.2772

Cell: 601.688.8096

Colby@TomSmithLand.com



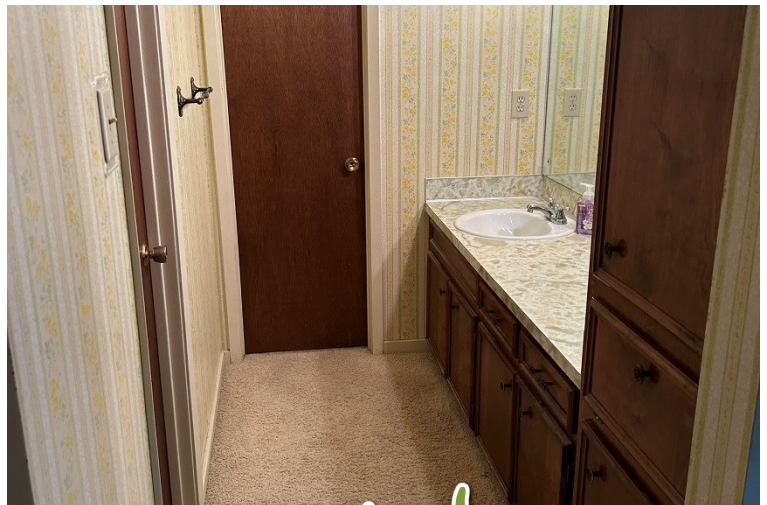
Expect More. Get More.

A Real Estate Expert You Can Trust

TomSmithLandandHomes.com

Information is believed to be accurate but not guaranteed.





COLBY WATSON

REALTOR®

Office: 601.898.2772

Cell: 601.688.8096

Colby@TomSmithLand.com



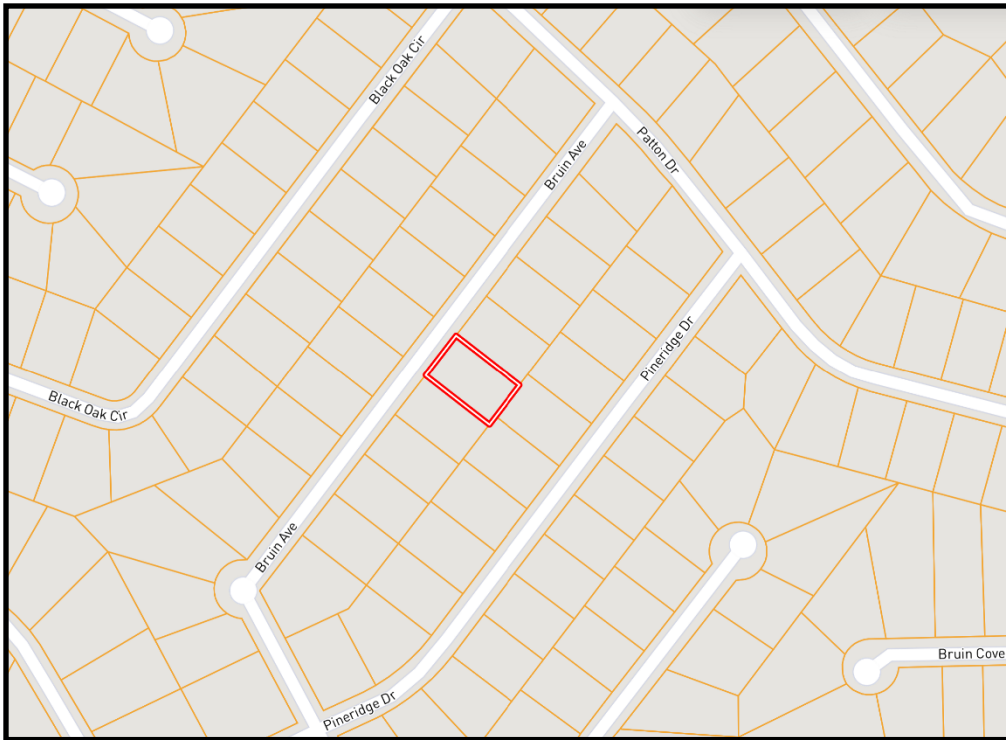
Expect More. Get More.

A Real Estate Expert You Can Trust

TomSmithLandandHomes.com

Information is believed to be accurate but not guaranteed.





Ownership Map



Aerial Map

[Click Here for an
Interactive Map](#)

COLBY WATSON

REALTOR®

Office: 601.898.2772

Cell: 601.688.8096

Colby@TomSmithLand.com



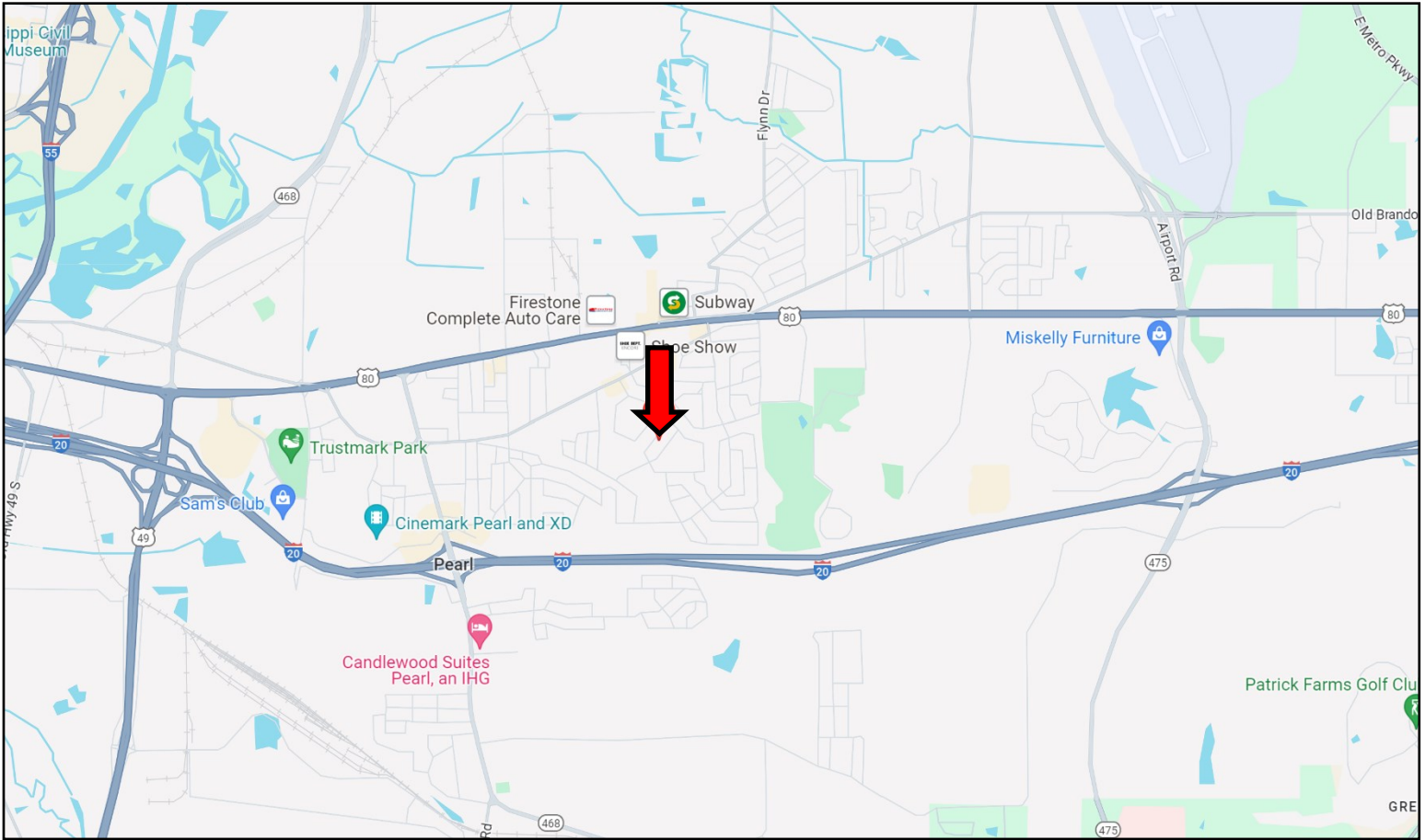
A Real Estate Expert You Can Trust

TomSmithLandandHomes.com

Information is believed to be accurate but not guaranteed.



Directional Map



Directions from the intersection of Hwy 80 and Old Brandon Road in Pearl, MS: Turn onto Pemberton Drive and take the first right onto Old Brandon Rd. Travel .5 miles, then turn left onto Patton Drive. Travel 0.3 miles, then turn right onto Bruin Avenue. After 0.1 mile, the home will be on your left.

654 Bruin Avenue Pearl, MS 39208



**COLBY
WATSON**
REALTOR®

Office: 601.898.2772

Cell: 601.668.8096

Colby@TomSmithLand.com



A Real Estate Expert You Can Trust

TomSmithLandandHomes.com

Information is believed to be accurate but not guaranteed.

