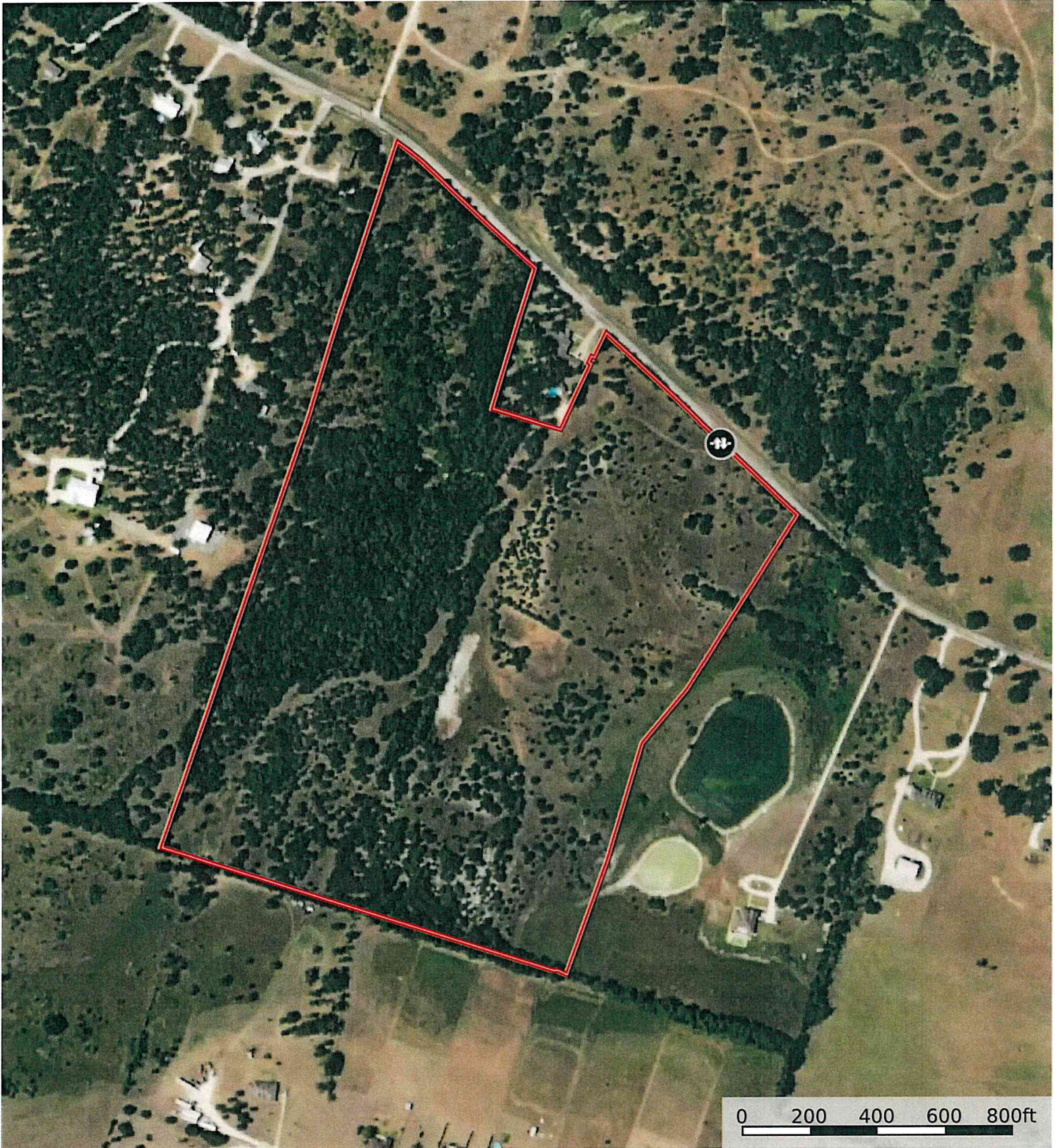
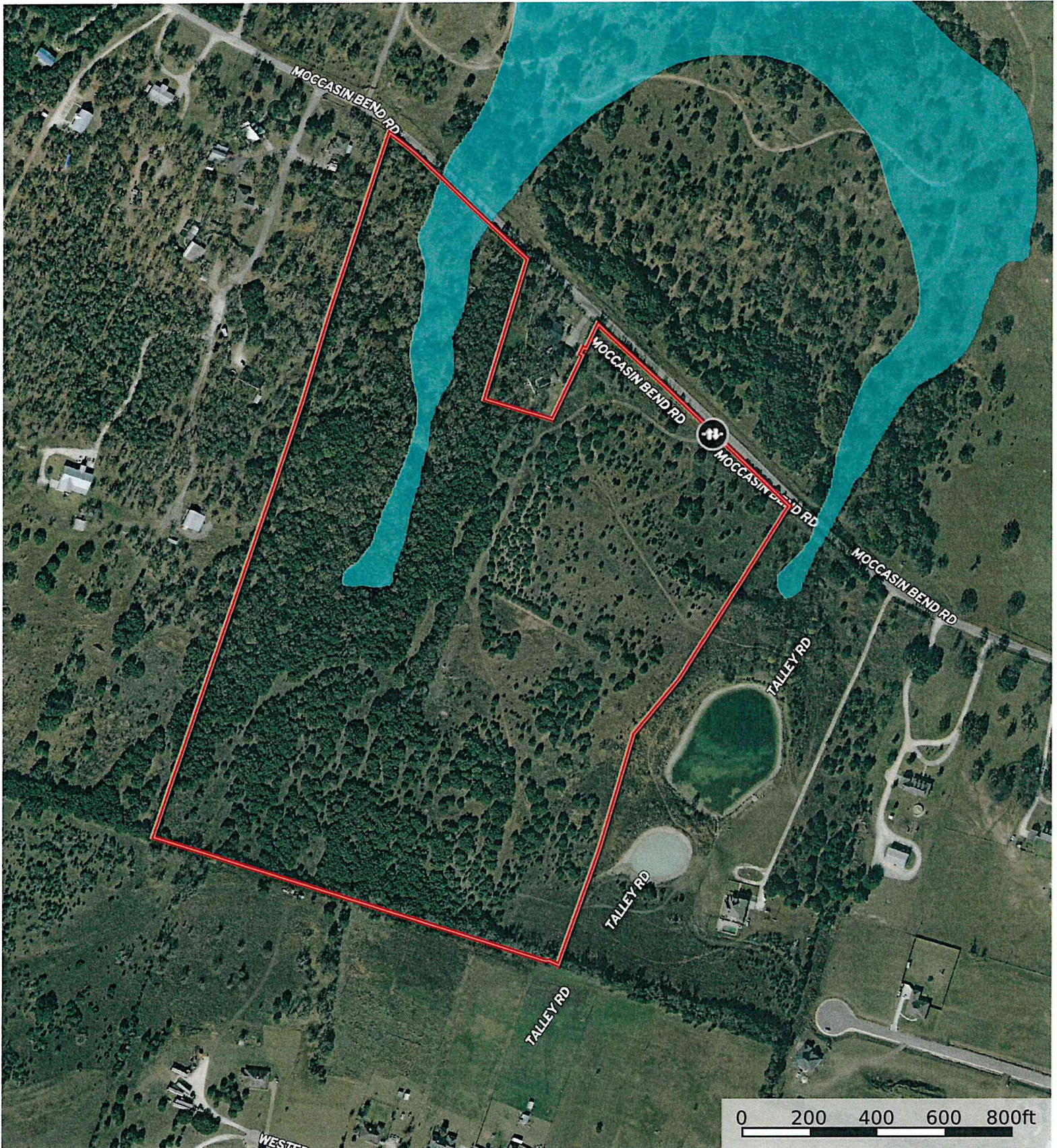


Dillard - Moccasin Bend Rd
Coryell County, Texas, 55 AC +/-



 Gate  Boundary

Dillard - Moccasin Bend Rd
Coryell County, Texas, 55 AC +/-



- Gate
- Boundary
- 100 Year Floodplain
- 500 Year Floodplain
- Floodway
- Special
- Unmapped/ Not Included

Dillard - Moccasin Bend Rd
Coryell County, Texas, 55 AC +/-



Gate Boundary

|  Boundary 56.42 ac

SOIL CODE	SOIL DESCRIPTION	ACRES	%	CPI	NCCPI	CAP
NuC	Nuff very stony silty clay loam, 2 to 6 percent slopes	41.28	73.18	0	29	6s
CoB2	Fairy-Hico complex, 1 to 5 percent slopes, moderately eroded	15.14	26.84	0	42	3e
TOTALS		56.42(*)	100%	-	32.49	5.19

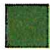







(*) Total acres may differ in the second decimal compared to the sum of each acreage soil. This is due to a round error because we only show the acres of each soil with two decimal.

Capability Legend

Increased Limitations and Hazards

Decreased Adaptability and Freedom of Choice Users

Land, Capability

								
	1	2	3	4	5	6	7	8
'Wild Life'	•	•	•	•	•	•	•	•
Forestry	•	•	•	•	•	•	•	
Limited	•	•	•	•	•	•	•	
Moderate	•	•	•	•	•	•		
Intense	•	•	•	•	•			
Limited	•	•	•	•				
Moderate	•	•	•					
Intense	•	•						
Very Intense	•							

Grazing Cultivation

- (c) climatic limitations (e) susceptibility to erosion
- (s) soil limitations within the rooting zone (w) excess of water

Dillard - Moccasin Bend Rd
Coryell County, Texas, 55 AC +/-



 Gate  Boundary