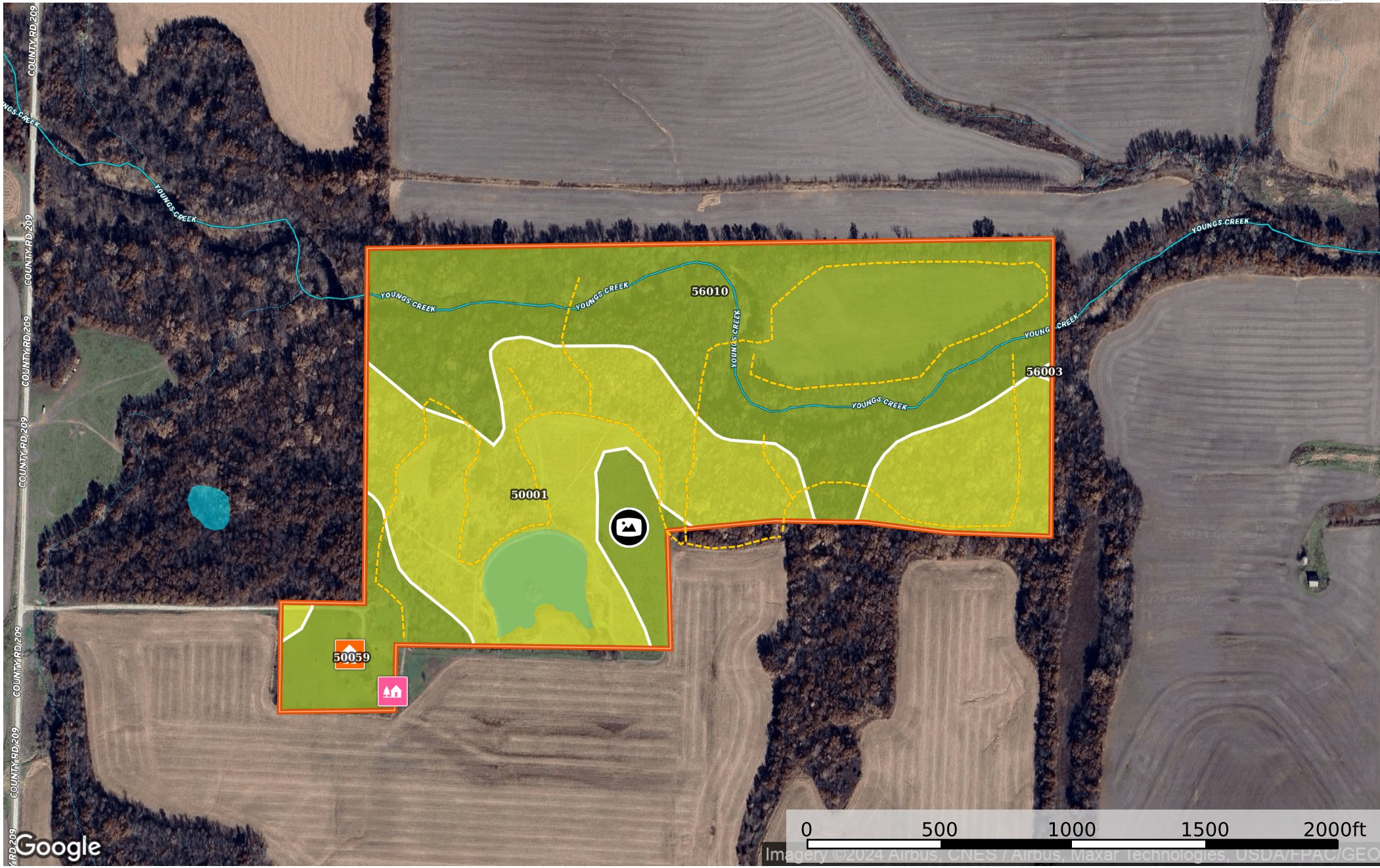


Audrain 76

Audrain County, Missouri, 76 AC +/-



- Cabin
- House
- Panoramic View
- Road / Trail
- Pond / Tank
- Boundary 1
- Stream, Intermittent
- River/Creek
- Water Body

Boundary 1 78.95 ac

SOIL CODE	SOIL DESCRIPTION	ACRES	%	CPI	NCCPI	CAP
56010	Belknap silt loam, 0 to 2 percent slopes, frequently flooded	37.08	46.97	0	65	3w
50001	Armstrong loam, 5 to 9 percent slopes, eroded	32.71	41.44	0	66	4e
50059	Mexico silt loam, 1 to 4 percent slopes, eroded	9.1	11.53	0	72	3e
56003	Twomile silt loam, 0 to 2 percent slopes, occasionally flooded	0.06	0.08	0	74	3w
TOTALS		78.95(*)	100%	-	66.24	3.41

(*) Total acres may differ in the second decimal compared to the sum of each acreage soil. This is due to a round error because we only show the acres of each soil with two decimal.

Capability Legend

Increased Limitations and Hazards
Decreased Adaptability and Freedom of Choice Users

Land, Capability

	1	2	3	4	5	6	7	8
'Wild Life'	•	•	•	•	•	•	•	•
Forestry	•	•	•	•	•	•	•	
Limited	•	•	•	•	•	•	•	
Moderate	•	•	•	•	•	•		
Intense	•	•	•	•	•			
Limited	•	•	•	•				
Moderate	•	•	•					
Intense	•	•						
Very Intense	•							

Grazing Cultivation

(c) climatic limitations (e) susceptibility to erosion
(s) soil limitations within the rooting zone (w) excess of water