

614 S. Leflore Ave.
Cleveland, MS 38732

\$78,500

This three-bedroom, one-bathroom home in Cleveland, Bolivar County, is valuable to your investment portfolio. The 990± SF residence features a fenced backyard and a convenient concrete parking pad at the front. Enjoy outdoor moments with friends and family on the covered side porch. Contact Tracey Bell or Abby Aulds to arrange your private showing today!



TRACEY BELL
MANAGING BROKER

O: 661.441.2500 | C: 662.719.4720
Tracey@TomSmithLand.com



ABBY AULDS
REALTOR®

O: 662.441.2500 | C: 940.781.3137
Abby@TomSmithLand.com

TomSmithLandandHomes.com

Information is believed to be accurate but not guaranteed.





TRACEY BELL
MANAGING BROKER

O: 662.441.2500 | C: 662.719.4720
Tracey@TomSmithLand.com



ABBY AULDS
REALTOR®

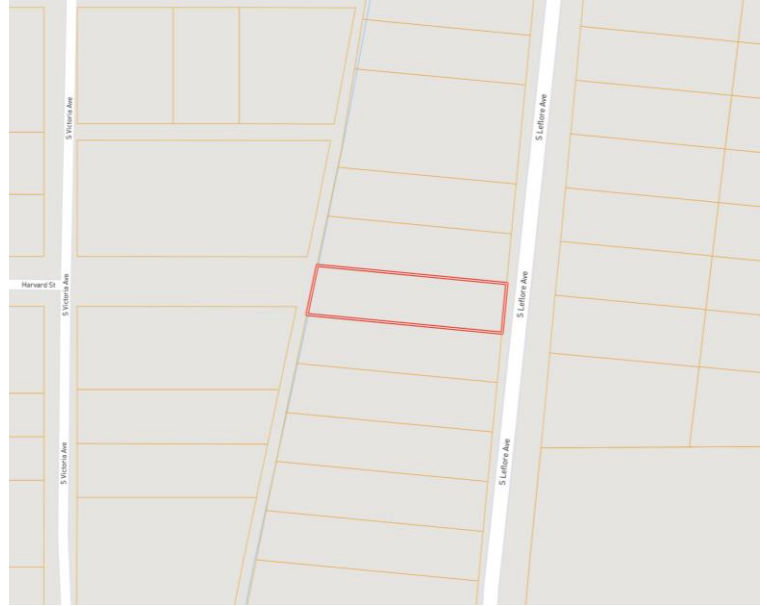
O: 662.441.2500 | C: 940.781.3137
Abby@TomSmithLand.com

TomSmithLandandHomes.com

Information is believed to be accurate but not guaranteed.

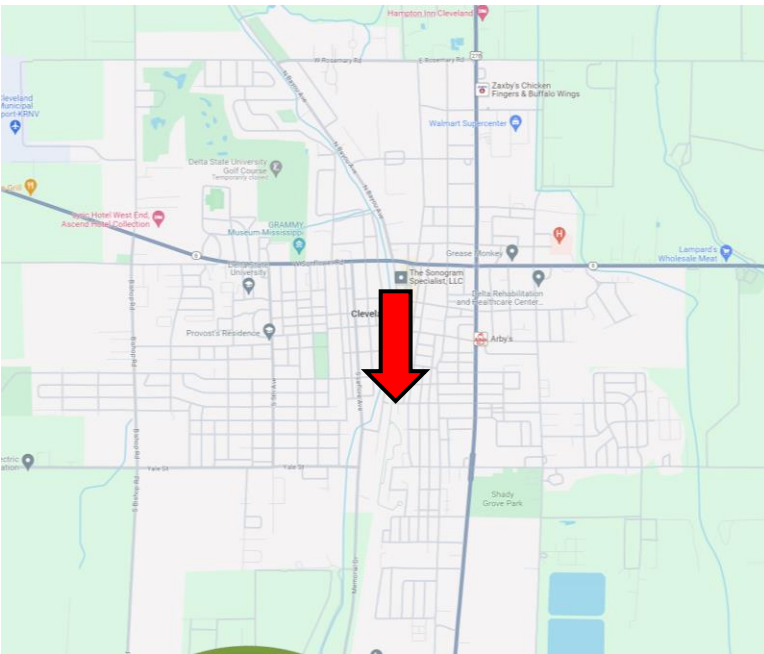


MAPS | [Click for Interactive Map](#)



Address: 614 S. Leflore Ave.,
Cleveland, MS 338732

**Directions from Hwy 8 & Hwy 61 in
Cleveland, MS:** Travel west on Hwy 8
for 0.6 miles. Turn left onto S. Leflore
Avenue. After 0.9 miles, the home will
be on the right. [Click for Google
Maps.](#)



TRACEY BELL
MANAGING BROKER

O: 661.441.2500 | C: 662.719.4720
Tracey@TomSmithLand.com



ABBY AULDS
REALTOR®

O: 662.441.2500 | C: 940.781.3137
Abby@TomSmithLand.com