

212± ACRES
AMITE COUNTY, MS
\$805,000



SMALLTOWN

HUNTING PROPERTIES
& REAL ESTATESM

OFFICE (769) 760-0005

THE AMITE 212

PROPERTY PROFILE

LOCATION:

- Crosby, MS 39633
- Amite County
- Frontage on Airport Lane Road
- 10± Miles North of Gloster
- 65± Miles North of Baton Rouge

COORDINATES:

- 31.2881944, -91.0570963

PROPERTY USE:

- Hunting
- Recreation
- Cabin Site
- Investment

PROPERTY INFORMATION:

- 212± Acres
- Rolling Terrain
- Interior Roads/Trails
- Creek Frontage
- Food Plots
- Mixed Age Pine Timber and Hardwood
- Electricity Available

TAX INFORMATION:

2023 - Estimated \$510.00

- Parcel- Part of 42-900-33-0001300, 42-400-22-0000300, 42-900-33-0000200



SMALLTOWN
HUNTING PROPERTIES
& REAL ESTATESM

DENNIS WEST

EAST MISSISSIPPI MANAGING BROKER

ALABAMA QUALIFYING BROKER

LOUISIANA ASSOCIATE BROKER

C: 601-248-4396 | O: 769-760-0005

dennis@smalltownproperties.com

2121 5th St., Ste 206 - Meridian, MS 39301

smalltownproperties.com

WELCOME TO THE AMITE 212

HUNTING ENTHUSIASTS - THIS PLACE IS FOR YOU! The Amite 212 is a prime opportunity for deer and turkey hunters. The 212± acre Amite County, MS property features a mix of pine timber of varying ages and pockets of hardwoods with creek frontage, providing excellent wildlife habitat. Well-maintained trails and established food plots with stands are already in place, making it a turn-key hunting destination. With road frontage on Airport Lane, just minutes from the town of Crosby, and electricity available, the land offers a convenient cabin site for extended stays. The rolling hills add to the scenic beauty, and its location being only 80 minutes from Baton Rouge makes it a perfect recreational retreat or investment opportunity. Additional acreage is available.

To explore all the Amite 212 has to offer, call Dennis West today.



SMALLTOWN
HUNTING PROPERTIES
& REAL ESTATESM

DENNIS WEST

EAST MISSISSIPPI MANAGING BROKER

ALABAMA QUALIFYING BROKER

LOUISIANA ASSOCIATE BROKER

C: 601-248-4396 | O: 769-760-0005

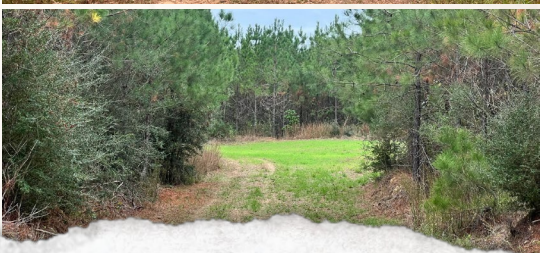
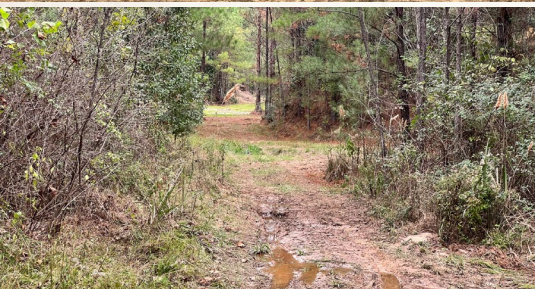
dennis@smalltownproperties.com

2121 5th St., Ste 206 - Meridian, MS 39301

smalltownproperties.com

212± ACRES

AMITE COUNTY, MISSISSIPPI



SMALLTOWN
HUNTING PROPERTIES
& REAL ESTATESM

DENNIS WEST

EAST MISSISSIPPI MANAGING BROKER

ALABAMA QUALIFYING BROKER

LOUISIANA ASSOCIATE BROKER

C: 601-248-4396 | O: 769-760-0005

dennis@smalltownproperties.com

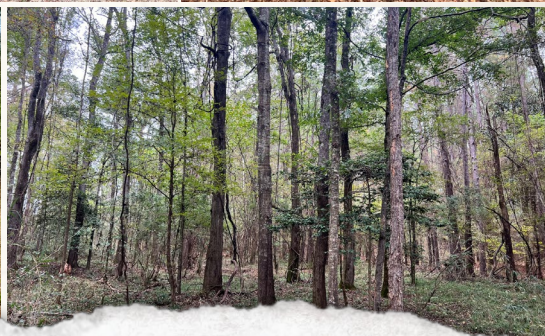
2121 5th St., Ste 206 - Meridian, MS 39301

smalltownproperties.com

Information is believed to be accurate but not guaranteed.

212± ACRES

AMITE COUNTY, MISSISSIPPI



SMALLTOWN
HUNTING PROPERTIES
& REAL ESTATESM

DENNIS WEST

EAST MISSISSIPPI MANAGING BROKER

ALABAMA QUALIFYING BROKER

LOUISIANA ASSOCIATE BROKER

C: 601-248-4396 | O: 769-760-0005

dennis@smalltownproperties.com

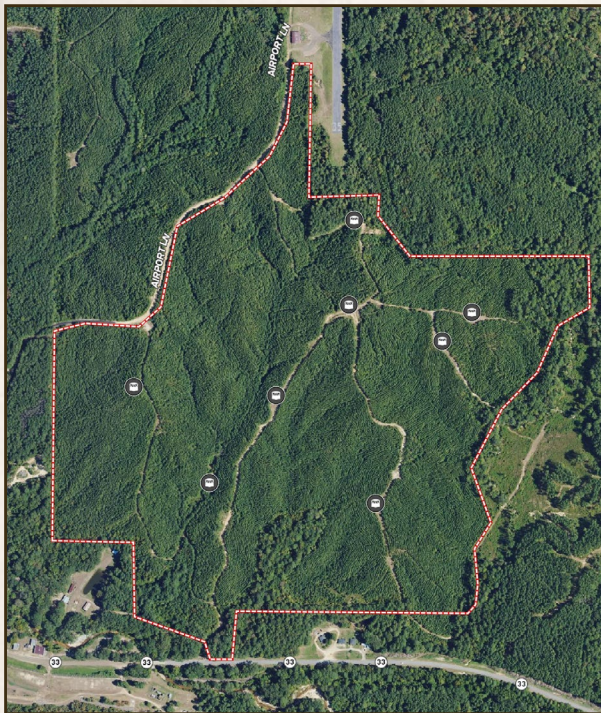
2121 5th St., Ste 206 - Meridian, MS 39301

smalltownproperties.com

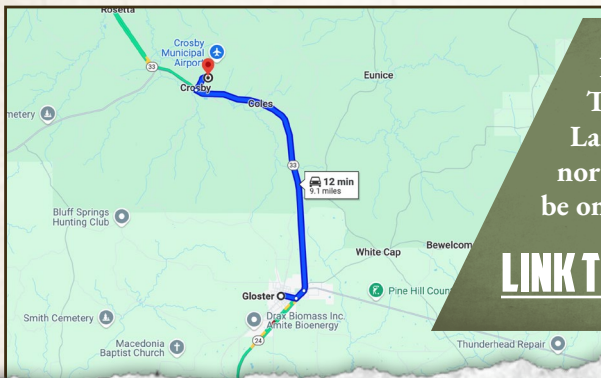
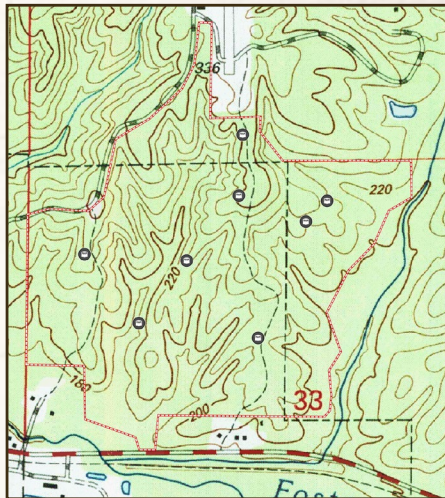
Information is believed to be accurate but not guaranteed.

212± ACRES

AMITE COUNTY, MISSISSIPPI



land **id.**
LINK



Directions From Gloster, MS:
Travel north on Hwy 33 to Airport
Lane. In Crosby, take Airport Lane
north and in 2 miles, the property will
be on the right.

LINK TO GOOGLE MAP DIRECTIONS



SMALLTOWN
HUNTING PROPERTIES
& REAL ESTATESM

DENNIS WEST

EAST MISSISSIPPI MANAGING BROKER

ALABAMA QUALIFYING BROKER

LOUISIANA ASSOCIATE BROKER

C: 601-248-4396 | O: 769-760-0005

dennis@smalltownproperties.com

2121 5th St., Ste 206 - Meridian, MS 39301

smalltownproperties.com

Information is believed to be accurate but not guaranteed.