

Move-in Ready Home

Bolivar County, MS



Address: 504 S. Leflore Ave. Cleveland, MS 38732

Experience comfort and style in this move-in ready, 1,274 sqft home featuring two bedrooms and one bathroom. Located near the charming downtown of Cleveland, Bolivar County, MS, this brick residence has tile flooring in the kitchen and bathroom, complemented by beautiful hardwood throughout the rest of the home. Complete with a covered one-car carport, the property extends to a spacious backyard, accompanied by a convenient shop. This residence would be ideal as the perfect starter home. Contact Sarah Reese for a private showing.

Directions from Cleveland, MS: Travel West on Hwy 8 for approximately 0.6 miles. Turn left onto N. Leflore Ave. After 0.7 miles, the house will be on the right. [Click for Google Maps.](#)



Call me today!

SARAH-REESE WRIGHT, REALTOR®
SarahReese@TomSmithLand.com
662.441.2500 office | 662.641.6696 cell



TomSmithLandandHomes.com

Information is believed to be accurate but not guaranteed.



Call me today!

SARAH-REESE WRIGHT, REALTOR®
SarahReese@TomSmithLand.com
662.441.2500 office | 662.641.6696 cell



Expect More. Get More.



TomSmithLandandHomes.com

Information is believed to be accurate but not guaranteed.



Call me today!

SARAH-REESE WRIGHT, REALTOR®
SarahReese@TomSmithLand.com
662.441.2500 office | 662.641.6696 cell



TomSmithLandandHomes.com

Information is believed to be accurate but not guaranteed.

Aerial Map



Interactive Map Link

Call me today!

SARAH-REESE WRIGHT, REALTOR®
SarahReese@TomSmithLand.com
662.441.2500 office | 662.641.6696 cell



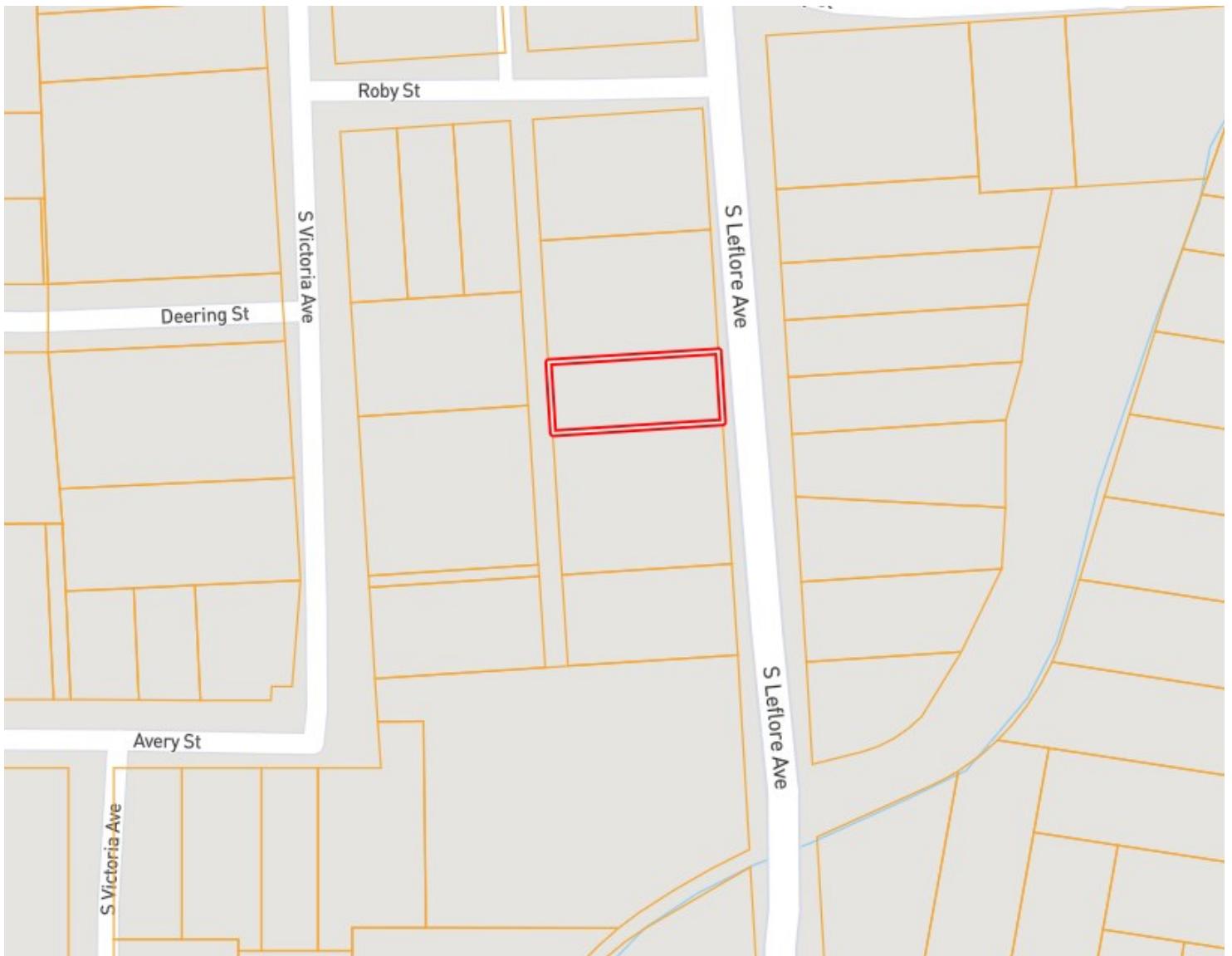
Expect More. Get More.



TomSmithLandandHomes.com

Information is believed to be accurate but not guaranteed.

Ownership Map



Call me today!

SARAH-REESE WRIGHT, REALTOR®

SarahReese@TomSmithLand.com
662.441.2500 office | 662.641.6696 cell



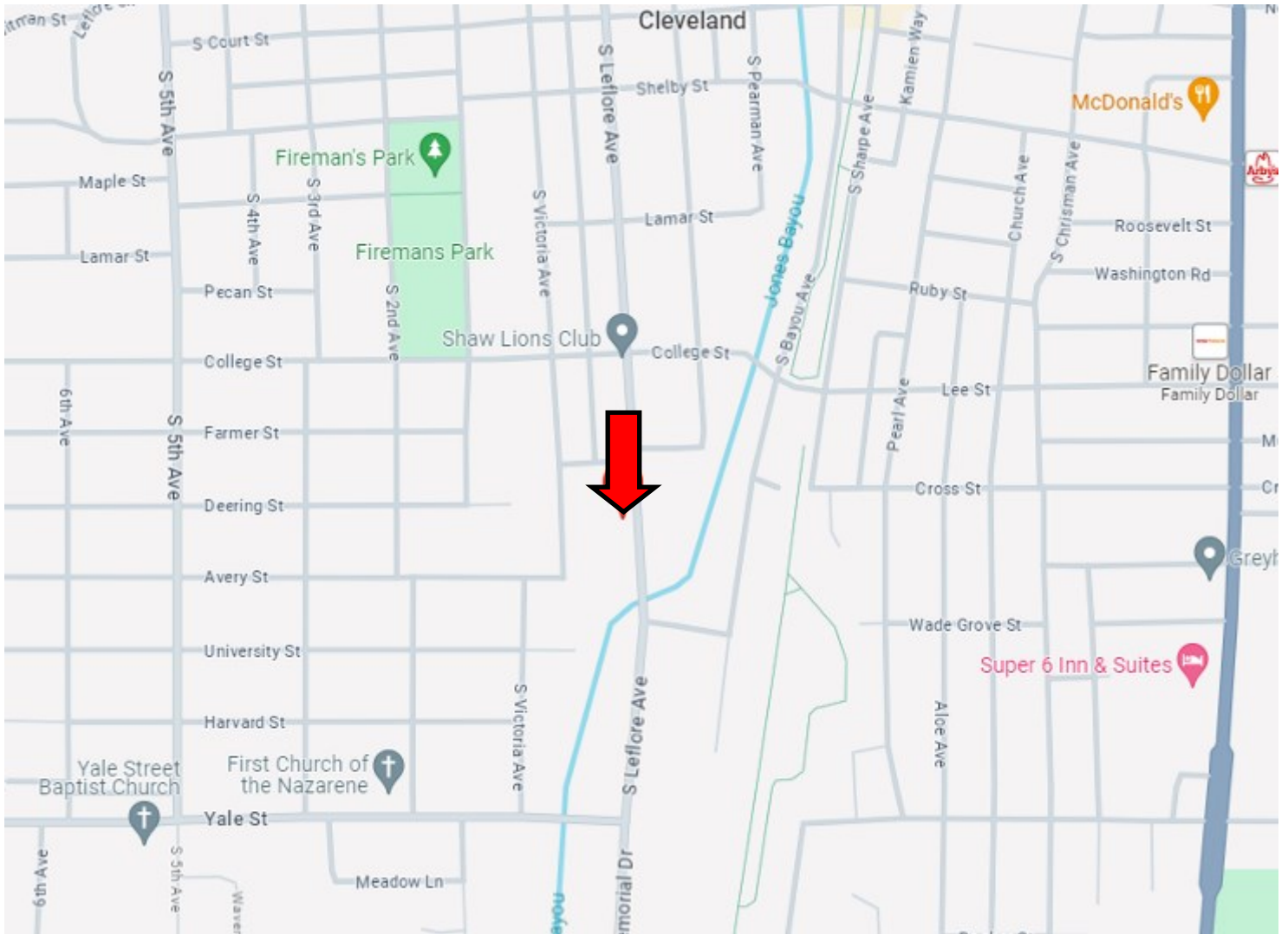
Expect More. Get More.



TomSmithLandandHomes.com

Information is believed to be accurate but not guaranteed.

Directional Map



Address: 504 S. Victoria Ave. Cleveland, MS 38732

Directions from Cleveland, MS: Travel West on Hwy 8 for approximately 0.6 miles. Turn left onto N. Leflore Ave. After 0.7 miles, the house will be on the right. [Click for Google Maps.](#)



Call me today!

SARAH-REESE WRIGHT, REALTOR®
SarahReese@TomSmithLand.com
662.441.2500 office | 662.641.6696 cell



TomSmithLandandHomes.com

Information is believed to be accurate but not guaranteed.