


Merrick38

Merrick County, Nebraska, 154.84 AC +/-




 Boundary

Merrick38

Merrick County, Nebraska, 154.84 AC +/-



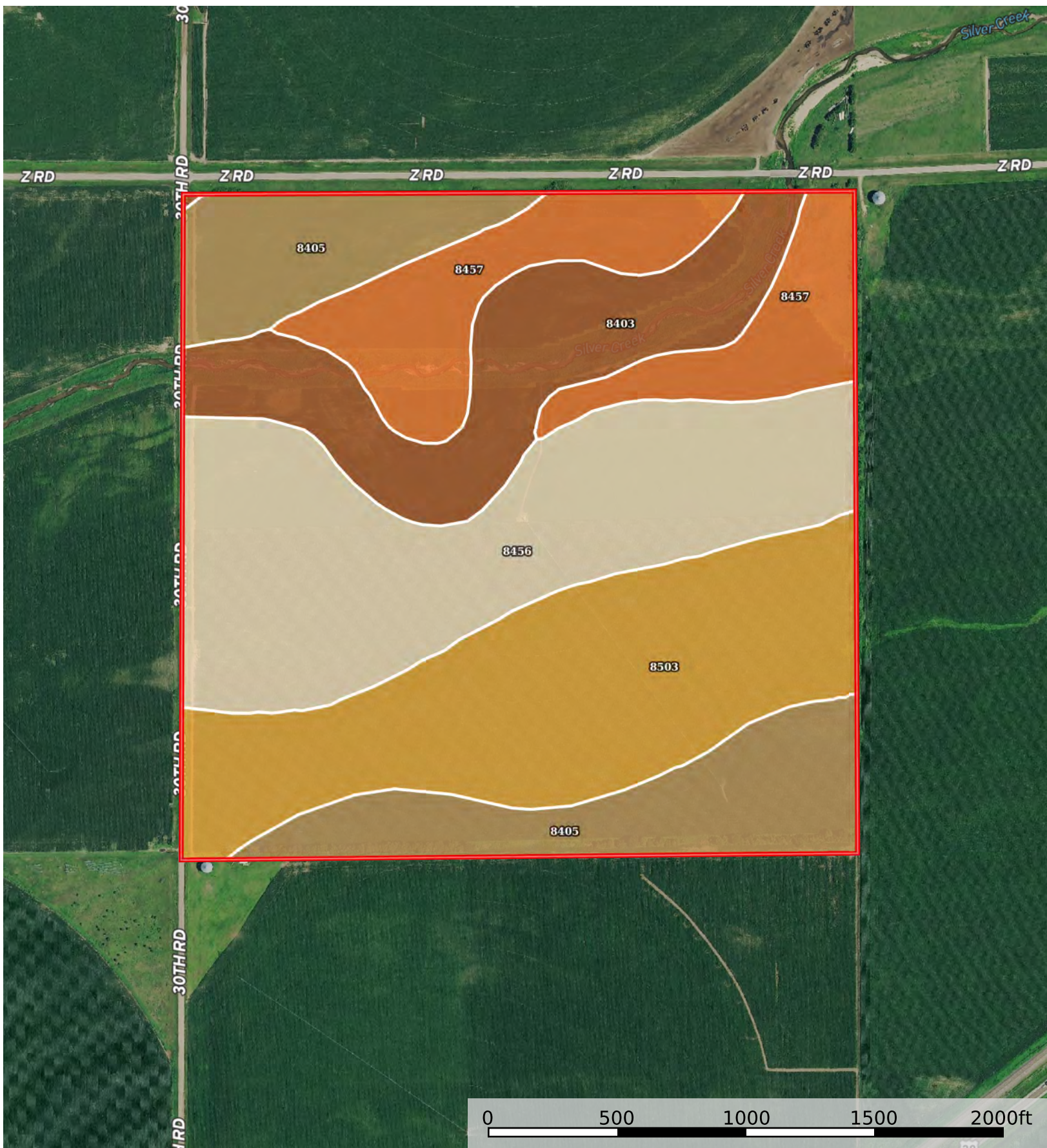
 Boundary




The information contained herein was obtained from sources deemed to be reliable. Land id™ Services makes no warranties or guarantees as to the completeness or accuracy thereof.

Merrick38

Merrick County, Nebraska, 154.84 AC +/-



 Boundary

|  Boundary 154.74 ac

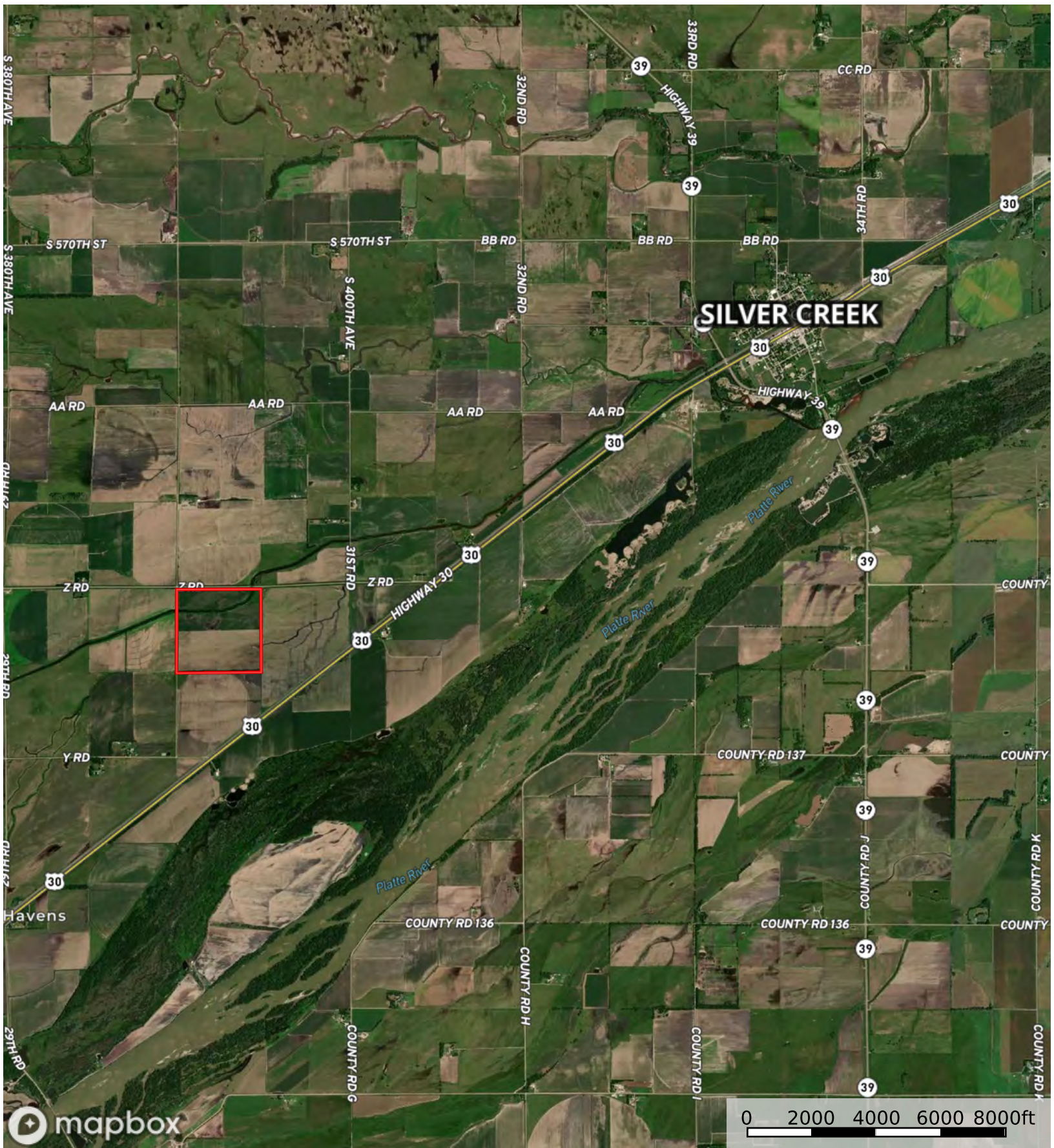
SOIL CODE	SOIL DESCRIPTION	ACRES	%	CPI	NCCPI	CAP
8456	Fonner sandy loam, rarely flooded	42.5	27.47	0	47	3w
8503	Lex loam, occasionally flooded	38.69	25.0	0	39	3w
8405	Alda sandy loam, occasionally flooded	27.69	17.9	0	35	3w
8403	Alda loam, occasionally flooded	23.03	14.88	0	37	3w
8457	Fonner variant loamy sand, rarely flooded	22.83	14.75	0	31	4s
TOTALS		154.74(*)	100%	-	39.01	3.15

(*) Total acres may differ in the second decimal compared to the sum of each acreage soil. This is due to a round error because we only show the acres of each soil with two decimal.



Merrick38

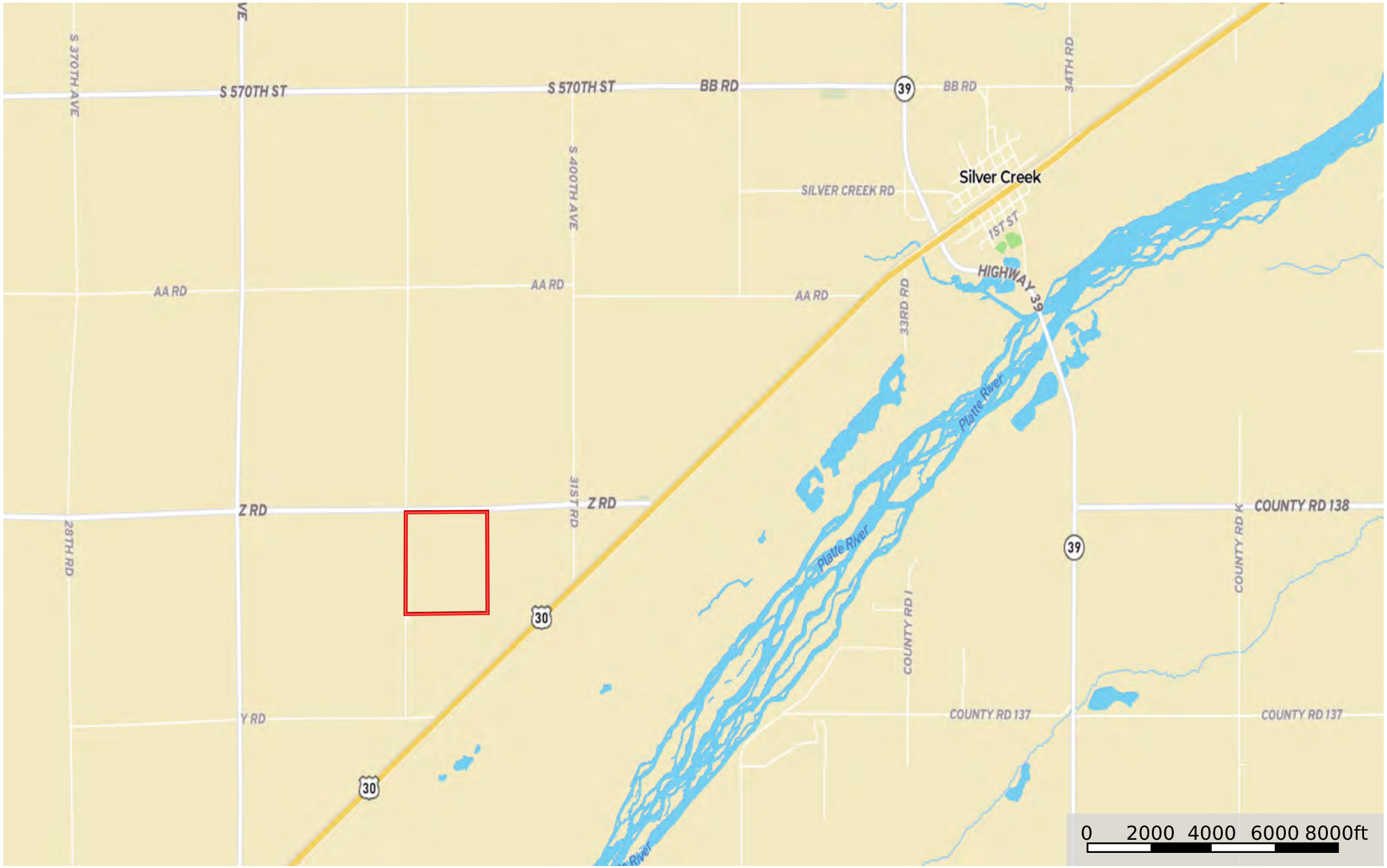
Merrick County, Nebraska, 154.84 AC +/-



Boundary

Merrick38

Merrick County, Nebraska, 154.84 AC +/-



Boundary