

24± ACRES
HINDS COUNTY, MS
\$95,000



SMALLTOWN

HUNTING PROPERTIES
& REAL ESTATESM

OFFICE (769) 888-2522

THE HINDS 24

PROPERTY PROFILE

LOCATION:

- Dry Grove Road
Terry, MS 39170
- Hinds County
- 9± Miles S of Raymond
- 25± Miles SW of Jackson

COORDINATES:

- 32.14109, -90.4402

PROPERTY USE:

- Deer & Turkey Hunting
- Recreational
- Potential Campsite

PROPERTY INFORMATION:

- 24± Total Acres
- 13± Year-Old Plantation Pine
- Hardwood Pockets
- Frontage on Elda Hill Creek
- Perimeter Trail
- Power and Water Available
at the Road

TAX INFORMATION:

2023 - \$174.89

- Parcel: 4964-0375-000



SMALLTOWN
HUNTING PROPERTIES
& REAL ESTATESM

ADAM HESTER, ALC

ASSOCIATE BROKER

C: 601-506-5058

O: 769-888-2522

adam@smalltownproperties.com

4848 Main St. - Flora, MS 39071

smalltownproperties.com

/10,000+ Followers

Information is believed to be accurate but not guaranteed.

WELCOME TO THE HINDS 24

WELCOME TO THE HINDS 24, LOCATED OFF DRY GROVE ROAD. Situated in Hinds County, MS, this 24± acre well-balanced tract features 13± year-old plantation pine, complemented by hardwood pockets and a perimeter trail. With approximately 600 yards of Elda Hill Creek frontage, the bottomland habitat is a prime, small acreage spot for deer and turkey hunting. Utilities, including power and water, are conveniently located at the road, with a potential campsite. Whether you're looking for a weekend getaway or a personal hunting retreat, the Hinds 24 offers the perfect setup! For further reference, the property is roughly nine miles south of Raymond and 25± miles southwest of Jackson.

**Contact Adam Hester for more
information and to schedule a viewing.**



SMALLTOWN
HUNTING PROPERTIES
& REAL ESTATESM

ADAM HESTER, ALC

ASSOCIATE BROKER


C: 601-506-5058

O: 769-888-2522

adam@smalltownproperties.com

4848 Main St. - Flora, MS 39071

smalltownproperties.com

/10,000+ Followers

Information is believed to be accurate but not guaranteed.

24 ± ACRES

HINDS COUNTY, MISSISSIPPI



SMALLTOWN
HUNTING PROPERTIES
& REAL ESTATESM

ADAM HESTER, ALC

ASSOCIATE BROKER


C: 601-506-5058

O: 769-888-2522

adam@smalltownproperties.com

4848 Main St. - Flora, MS 39071

smalltownproperties.com

/10,000+ Followers

Information is believed to be accurate but not guaranteed.

24 ± ACRES

HINDS COUNTY, MISSISSIPPI



SMALLTOWN
HUNTING PROPERTIES
& REAL ESTATESM

ADAM HESTER, ALC

ASSOCIATE BROKER


C: 601-506-5058

O: 769-888-2522

adam@smalltownproperties.com

4848 Main St. - Flora, MS 39071

smalltownproperties.com

/10,000+ Followers

Information is believed to be accurate but not guaranteed.

24 ± ACRES

HINDS COUNTY, MISSISSIPPI



SMALLTOWN
HUNTING PROPERTIES
& REAL ESTATESM

ADAM HESTER, ALC

ASSOCIATE BROKER

C: 601-506-5058

O: 769-888-2522

adam@smalltownproperties.com

4848 Main St. - Flora, MS 39071

smalltownproperties.com

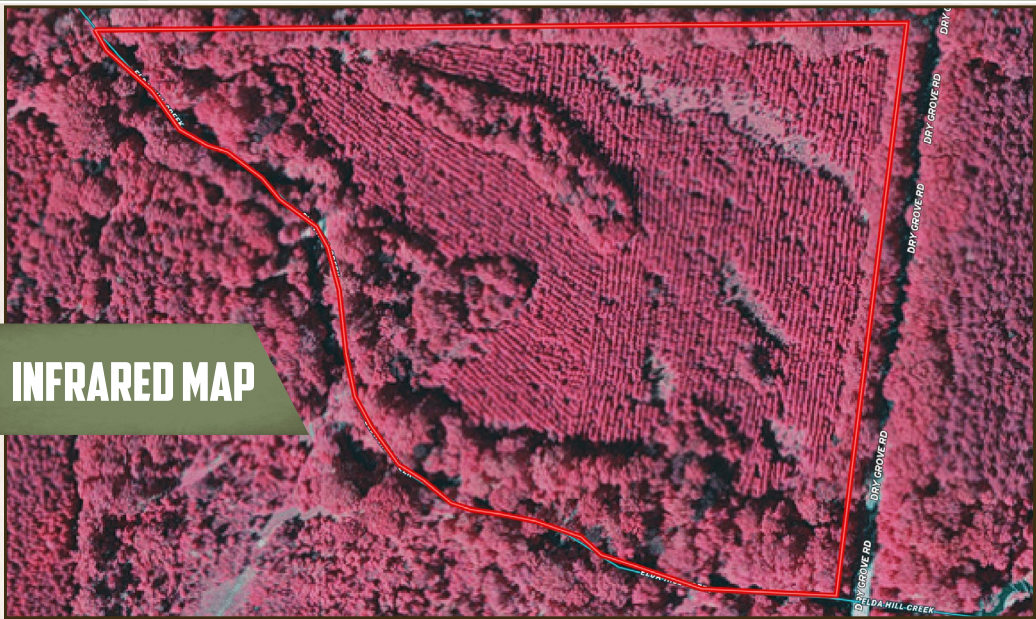
f/10,000+ Followers

Information is believed to be accurate but not guaranteed.

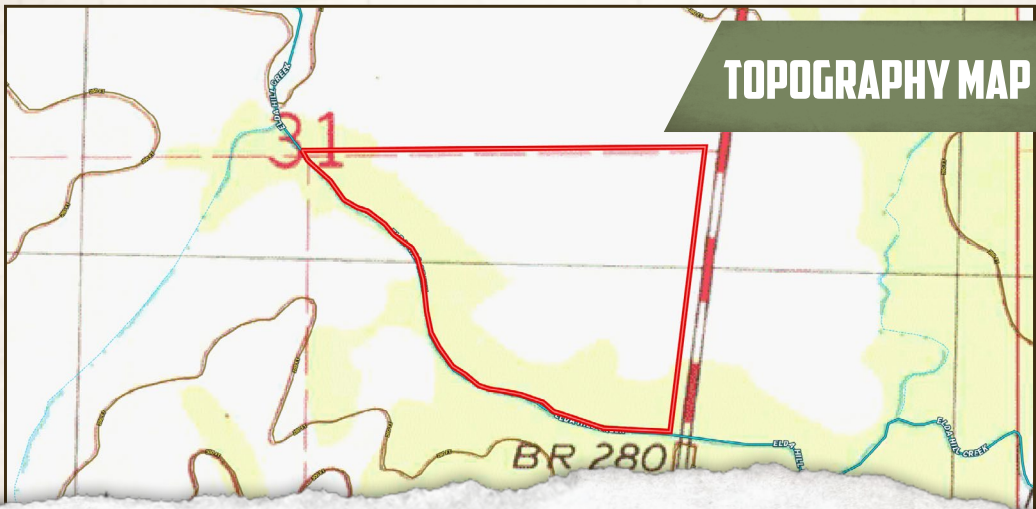
24 ± ACRES

HINDS COUNTY, MISSISSIPPI

INFRARED MAP



TOPOGRAPHY MAP



SMALLTOWN
HUNTING PROPERTIES
& REAL ESTATESM

ADAM HESTER, ALC

ASSOCIATE BROKER


C: 601-506-5058

O: 769-888-2522

adam@smalltownproperties.com

4848 Main St. - Flora, MS 39071

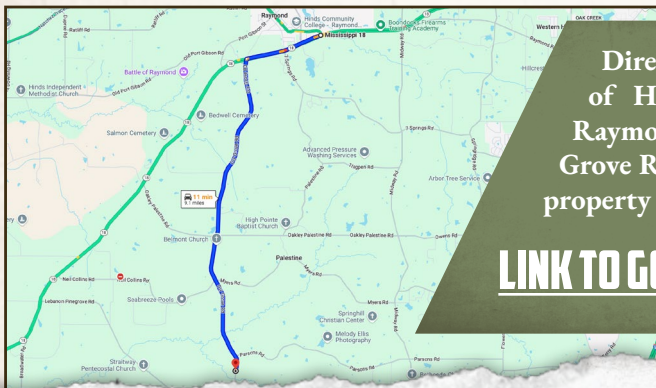
smalltownproperties.com

 10,000+ Followers

Information is believed to be accurate but not guaranteed.

24 ± ACRES

HINDS COUNTY, MISSISSIPPI



Directions From the Intersection
of Hwy 18 and Main Street in
Raymond, MS: Turn left on Dry
Grove Road and travel 9.3 miles to
the property on your right.

[LINK TO GOOGLE MAP DIRECTIONS](#)



SMALLTOWN
HUNTING PROPERTIES
& REAL ESTATESM

ADAM HESTER, ALC

ASSOCIATE BROKER

C: 601-506-5058


O: 769-888-2522

adam@smalltownproperties.com

4848 Main St. - Flora, MS 39071

smalltownproperties.com

Information is believed to be accurate but not guaranteed.

 10,000+ Followers