

# Development Opportunity

## Prentiss County, Booneville, Mississippi

### 16 Lots in Kenzington Way Subdivision



These beautiful lots would be perfect for building your forever home or use for development. They are located in Prentiss County and inside the Booneville city limits, just 2.3 miles from downtown. The surveyed lots include power, city water, and natural gas. Give Kyle a call to schedule your showing today!



**KYLE**  
**CARPENTER**  
REALTOR®

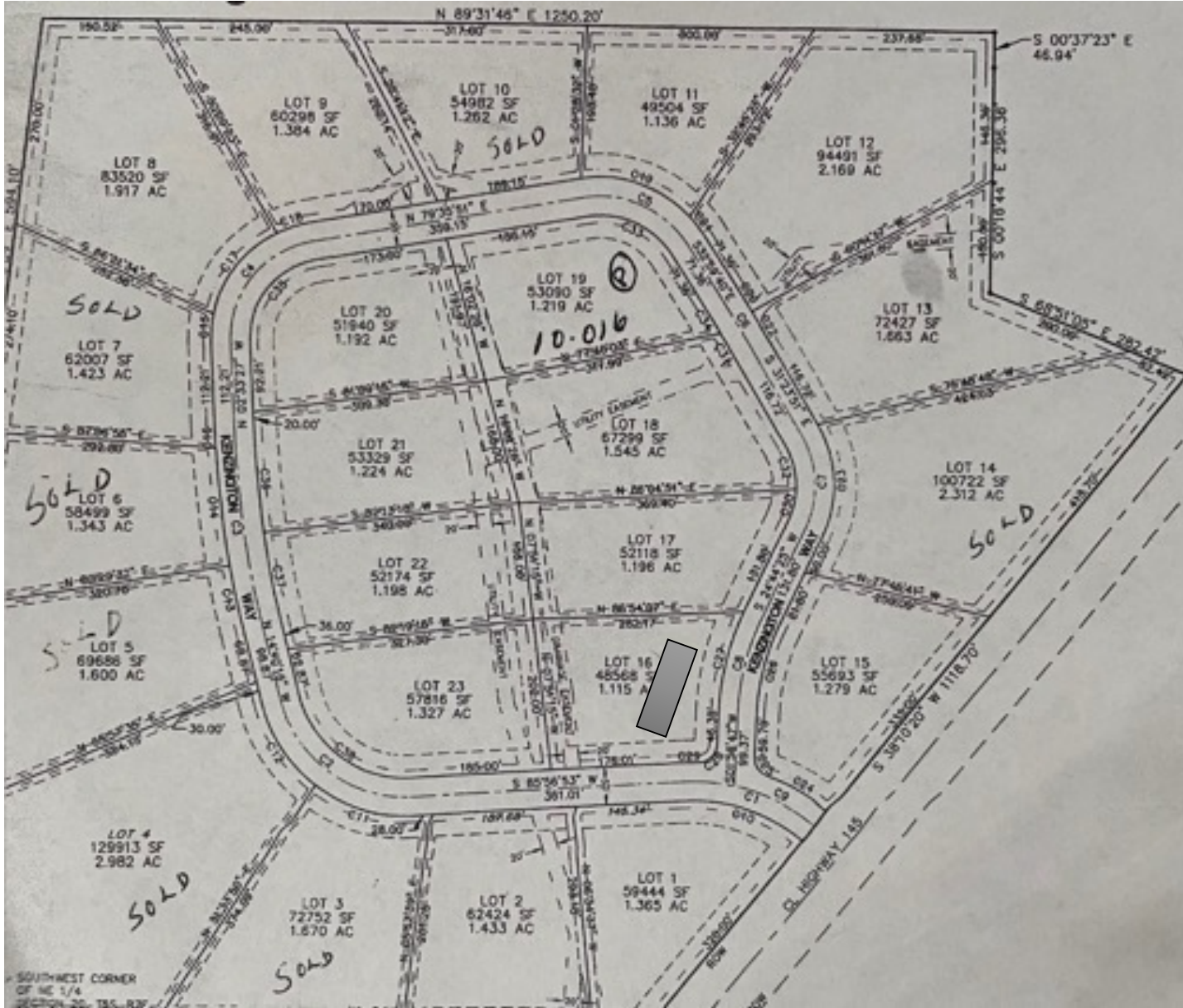
Office: 662.268.6333  
Cell: 662.523.5988  
Kyle@TomSmithHomes.com



**A Real Estate Expert You Can Trust**  
TomSmithLandandHomes.com

Information is believed to be accurate but not guaranteed.





# Restrictive Covenants

- All homes shall be built facing the street
- All homes must have a minimum square footage of 2,000
  - No manufactured homes
  - No road can be built on lots



KYLE  
**CARPENTER**  
REALTOR®

Office: 662.268.6333  
Cell: 662.523.5988  
Kyle@TomSmithHomes.com



**A Real Estate Expert You Can Trust**

TomSmithLandandHomes.com

Information is believed to be accurate but not guaranteed.





**KYLE**  
**CARPENTER**  
REALTOR®  
Office: 662.268.6333  
Cell: 662.523.5988  
Kyle@TomSmithHomes.com



**A Real Estate Expert You Can Trust**

[TomSmithLandandHomes.com](http://TomSmithLandandHomes.com)

Information is believed to be accurate but not guaranteed.



Lot 12

Lot 13

Lot 15

Lot 16

Lot 17



**KYLE  
CARPENTER**  
REALTOR®

Office: 662.268.6333  
Cell: 662.523.5988  
Kyle@TomSmithHomes.com



**A Real Estate Expert You Can Trust**

[TomSmithLandandHomes.com](https://TomSmithLandandHomes.com)

Information is believed to be accurate but not guaranteed.





Lot 13



Lots 17,18



Lot 22



Lot 18



KYLE  
**CARPENTER**  
 REALTOR®  
 Office: 662.268.6333  
 Cell: 662.523.5988  
 Kyle@TomSmithHomes.com



**A Real Estate Expert You Can Trust**  
 TomSmithLandandHomes.com

Information is believed to be accurate but not guaranteed.





KYLE  
**CARPENTER**  
REALTOR<sup>®</sup>

Office: 662.268.6333  
Cell: 662.523.5988  
Kyle@TomSmithHomes.com

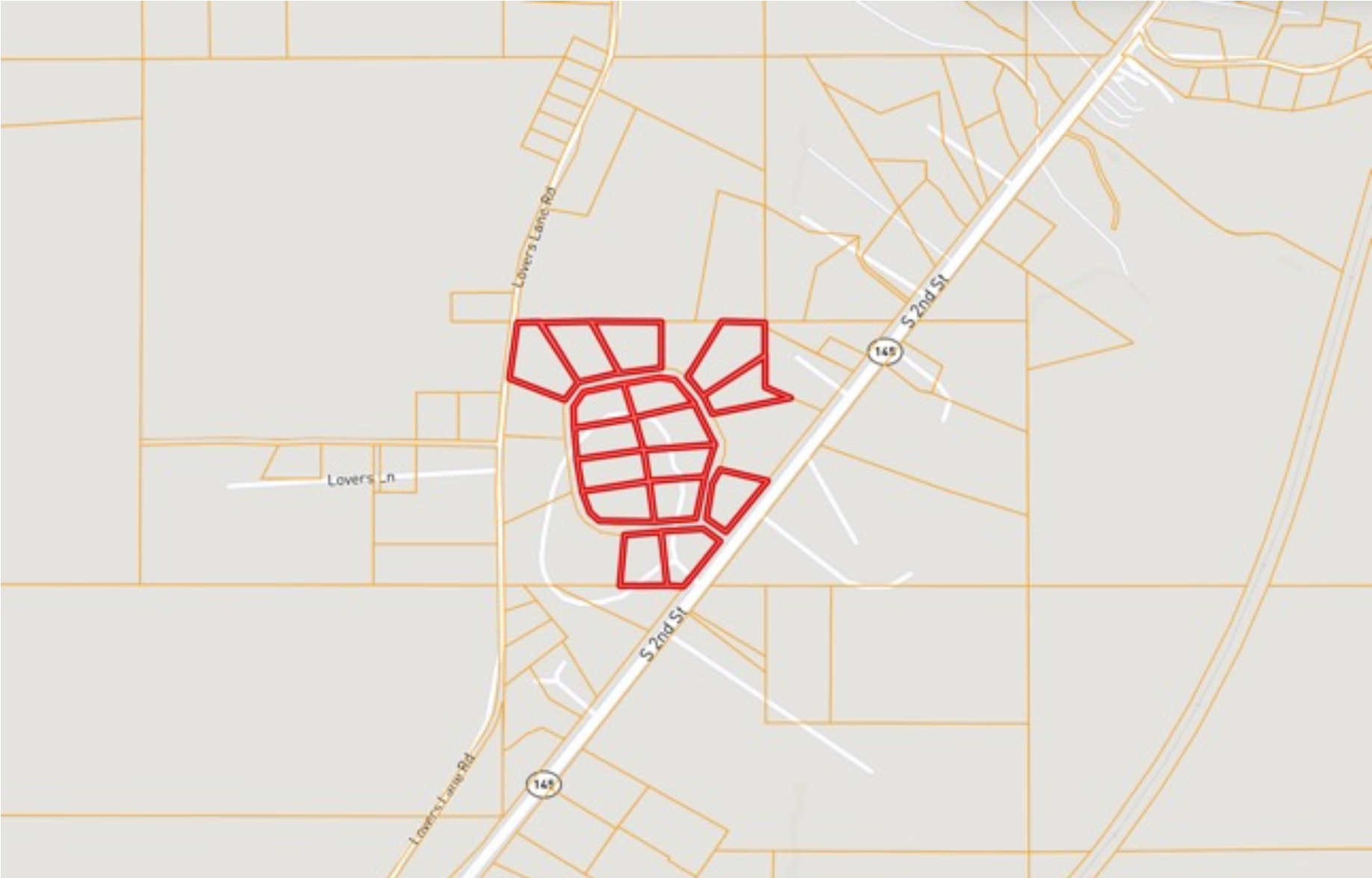


**A Real Estate Expert You Can Trust**  
TomSmithLandandHomes.com

Information is believed to be accurate but not guaranteed.



# OWNERSHIP MAP



**KYLE**  
**CARPENTER**  
REALTOR®  
Office: 662.268.6333  
Cell: 662.523.5988  
Kyle@TomSmithHomes.com



**A Real Estate Expert You Can Trust**

TomSmithLandandHomes.com

Information is believed to be accurate but not guaranteed.



# AERIAL MAP



[CLICK HERE FOR AN INTERACTIVE MAP](#)



**KYLE CARPENTER**  
REALTOR®

Office: 662.268.6333  
Cell: 662.523.5988  
Kyle@TomSmithHomes.com



**A Real Estate Expert You Can Trust**  
TomSmithLandandHomes.com

Information is believed to be accurate but not guaranteed.





# FEMA/FLOODPLAIN MAP



**KYLE  
CARPENTER**  
REALTOR®  
Office: 662.268.6333  
Cell: 662.523.5988  
Kyle@TomSmithHomes.com



**A Real Estate Expert You Can Trust**  
TomSmithLandandHomes.com

Information is believed to be accurate but not guaranteed.



# TOPO MAP



**KYLE  
CARPENTER**  
REALTOR®  
Office: 662.268.6333  
Cell: 662.523.5988  
Kyle@TomSmithHomes.com

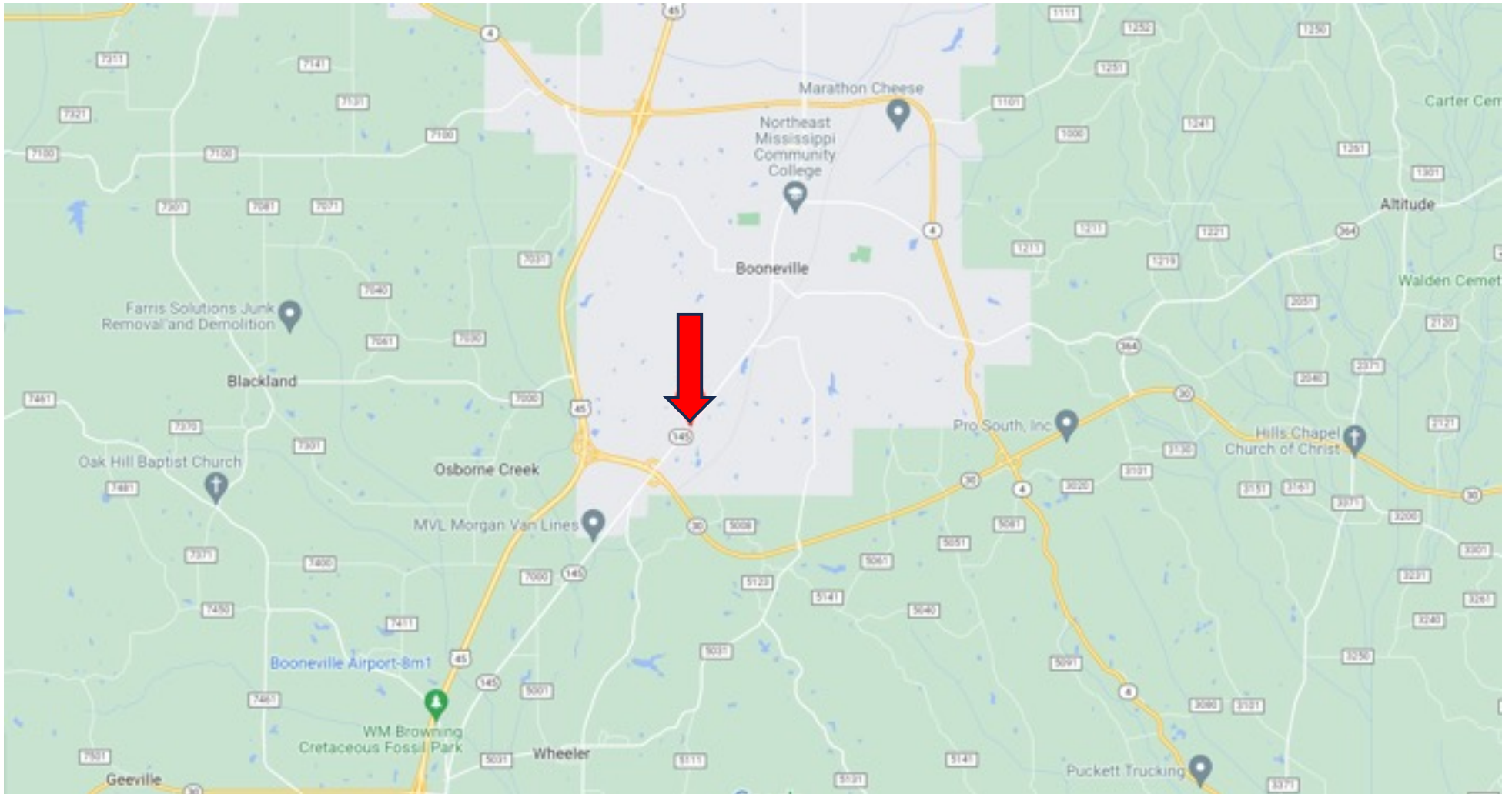


**A Real Estate Expert You Can Trust**  
TomSmithLandandHomes.com

Information is believed to be accurate but not guaranteed.



# DIRECTIONAL MAP



Directions from Booneville, MS: Travel Hwy 145 South for 2 Miles. Kenzington Way will be on the right.

[Kenzington Way Booneville, MS 38829– CLICK FOR DIRECTIONS](#)



**KYLE  
CARPENTER**  
REALTOR®  
Office: 662.268.6333  
Cell: 662.523.5988  
Kyle@TomSmithHomes.com



**A Real Estate Expert You Can Trust**  
TomSmithLandandHomes.com

Information is believed to be accurate but not guaranteed.

