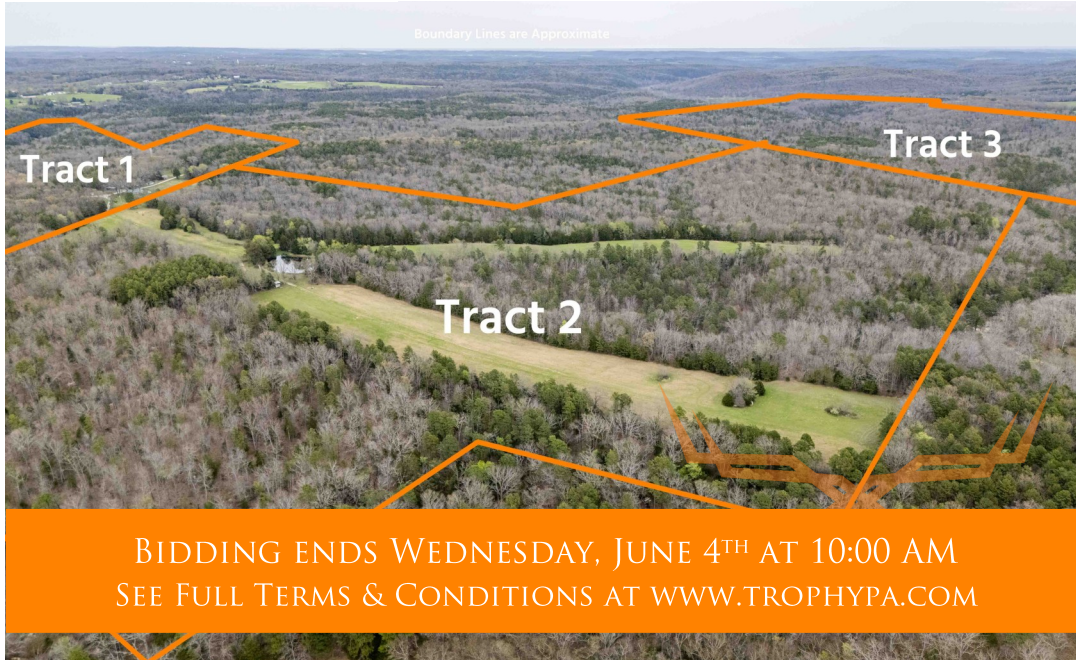




# Ste. Genevieve County Missouri Land for Sale at Auction—Blue Pool Farms

[www.TrophyPA.com](http://www.TrophyPA.com) • (855) 573-5263 • [leads@trophy.com](mailto:leads@trophy.com)



**PROPERTY ADDRESS:**  
00 Rural Route  
Ste. Genevieve, MO 63670

**ACRES:** 646±  
**COUNTY:** Ste. Genevieve

## AUCTION DETAILS:

**Preview Day Sunday, May 18th 10am to Noon.**

**Bidding Ends Wednesday, June 4th at 10AM.**

Welcome to your private paradise nestled on 646± breathtaking acres of prime recreational land being offered in 3 tracts, perfectly located near Ste. Genevieve, Missouri—only one hour from St. Louis. This stunning property offers a harmonious blend of natural beauty, abundant wildlife, and modern comfort.

At the heart of this serene landscape stands a beautifully crafted lodge, thoughtfully designed and built just 10 years ago. The lodge boasts 3 spacious bedrooms and 2 full bathrooms, enhanced by stylish stained concrete floors and an inviting open-concept layout—ideal for gatherings with family and friends. With ample space around the lodge, there's potential to expand with additional structures or guest accommodations.



## PRESENTED BY:

**JAKE BROWN**  
**Director of Marketing/Realtor**  
M: (314) 602-1116  
P: (855) 573-5263 x740  
E: [jbrown@trophy.com](mailto:jbrown@trophy.com)

**Trophy Properties and Auction**  
640 Cepi Drive  
Suite 100  
Chesterfield, MO 63005

[www.Trophy.com](http://www.Trophy.com)  
[leads@trophy.com](mailto:leads@trophy.com)





**T R O P H Y**  
PROPERTIES AND AUCTION  
LAND | RECREATIONAL | RESIDENTIAL

# Ste. Genevieve County Missouri Land for Sale at Auction—Blue Pool Farms

[www.TrophyPA.com](http://www.TrophyPA.com) • (855) 573-5263 • [leads@trophyPA.com](mailto:leads@trophyPA.com)

Explore 25± acres of open ground, perfect for food plots, a shooting range, or simply taking in the expansive views. Anglers will delight in the .7± acre stocked pond, providing peaceful afternoons of fishing or a scenic spot to unwind.

The crown jewel of this property is the enchanting Jonca Creek, featuring breathtaking waterfalls and a pristine swimming hole—a truly idyllic retreat that captures the essence of tranquility and natural wonder. The creek meanders gracefully through the land, creating captivating water features that elevate the property's charm.

Outdoor enthusiasts will appreciate the extensive acreage consisting of mature timber and picturesque ridges, ideal for hunting, hiking, and exploring. The property shares a boundary with the Horton Farm Conservation Area, adding hundreds of additional acres for recreational enjoyment right at your doorstep. Nearby Hawn State Park further expands your outdoor adventures, offering beautiful trails and unique geological formations.

Properties in this area rarely become available—don't let this incredible opportunity pass you by. Whether you're looking to hunt, farm, build, or invest, this tract checks all the boxes.

## **Tract 1: 136± Acres**

- Beautiful 3 Bed/2 Bath Lodge
- Mature Hardwoods and Rolling Hills
- Bordered by the Horton Farm Conservation Area
- Wet Weather Creeks

## **Tract 2: 233± Acres**

- 25± Acres of open fields
- Mature Hardwoods and Rolling Hills
- Access to Electric to Build
- .7± Acre Stocked Pond
- Bordered by the Horton Farm Conservation Area
- The Jonca Creek Runs through the property

## **Tract 3: 277± Acres**

- Mature Hardwoods and Rolling Hills
- The Jonca Creeks runs through the property - this tracts features a small waterfall and a large swimming hole!
- Electric is nearby to build



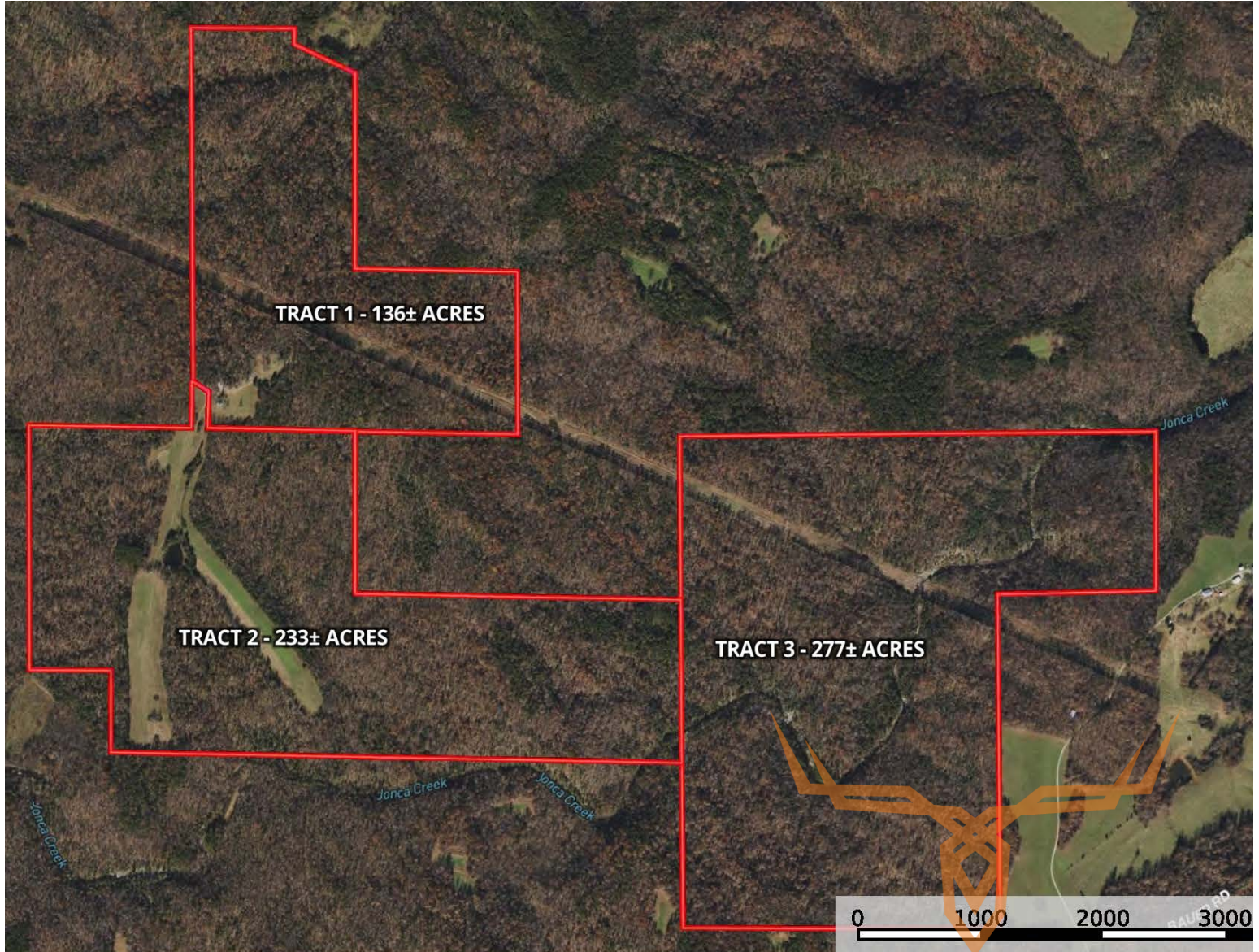




**T R O P H Y**  
PROPERTIES AND AUCTION  
LAND | RECREATIONAL | RESIDENTIAL

# Ste. Genevieve County Missouri Land for Sale at Auction—Blue Pool Farms

[www.TrophyPA.com](http://www.TrophyPA.com) • (855) 573-5263 • [leads@trophyapa.com](mailto:leads@trophyapa.com)



[www.trophyapa.com](http://www.trophyapa.com)

640 Cepi Drive, Suite A, Chesterfield, MO 63005

**id.** The information contained here  
is deemed to be reliable.  
Land id™ Services makes no  
warranty of completeness or accuracy there

The information is believed to be accurate; however, no liability for its accuracy, errors or omissions is assumed. All lines are drawn on maps, photographs, etc. are approximate. Buyers should verify the information to their satisfaction. There are no expressed or implied warranties pertaining to this property. Both real estate (including all improvements, if any) is being sold As Is, Where Is with NO warranties expressed or implied. Please make all inspections and have financing arranged prior to the end of bidding.