

Blue Pool Farms LLC, Ste. Genevieve County – 646 ac +/- Timber Assessment

Eric Holzmüller, Forester
Holzmüller Forestry Consulting
618-713-0034



The 646 acre property was evaluated by walking the timber on March 20, 2025 (Figure 1). In addition, aerial imagery and topographic maps were used to help assess the property (Figures 2 and 3). Approximately 582 acres of the property are forested. Species composition and stand structure are relatively uniform across all three tracks. The overstory canopy is dominated by white oak, red oak, black oak, post oak, hickory, and pine. Most of the trees in the overstory range in diameter at breast height from 10 to 14 inches, however, there are a few scattered individuals with diameters greater than 18 inches. In the midstory, there is an abundant amount of white oak, as well as other hardwoods, cedar, and pine. Timber quality and production is typical for this area and the forest appears to be healthy. This property was harvested about 15 years ago and it will likely be another 20 or 30 years before there is enough volume for a commercial harvest to be considered.



Figure 1. A) Most of the property is dominated by hardwoods with some in the overstory and midstory, but there are some pockets that are dominated by pine. B) Old stump on the property from a timber harvest that occurred about 15 years ago. C) Maturing stand of mixed oak that will likely be ready for a harvest in 20-30 years.

Figure 2. Aerial Map

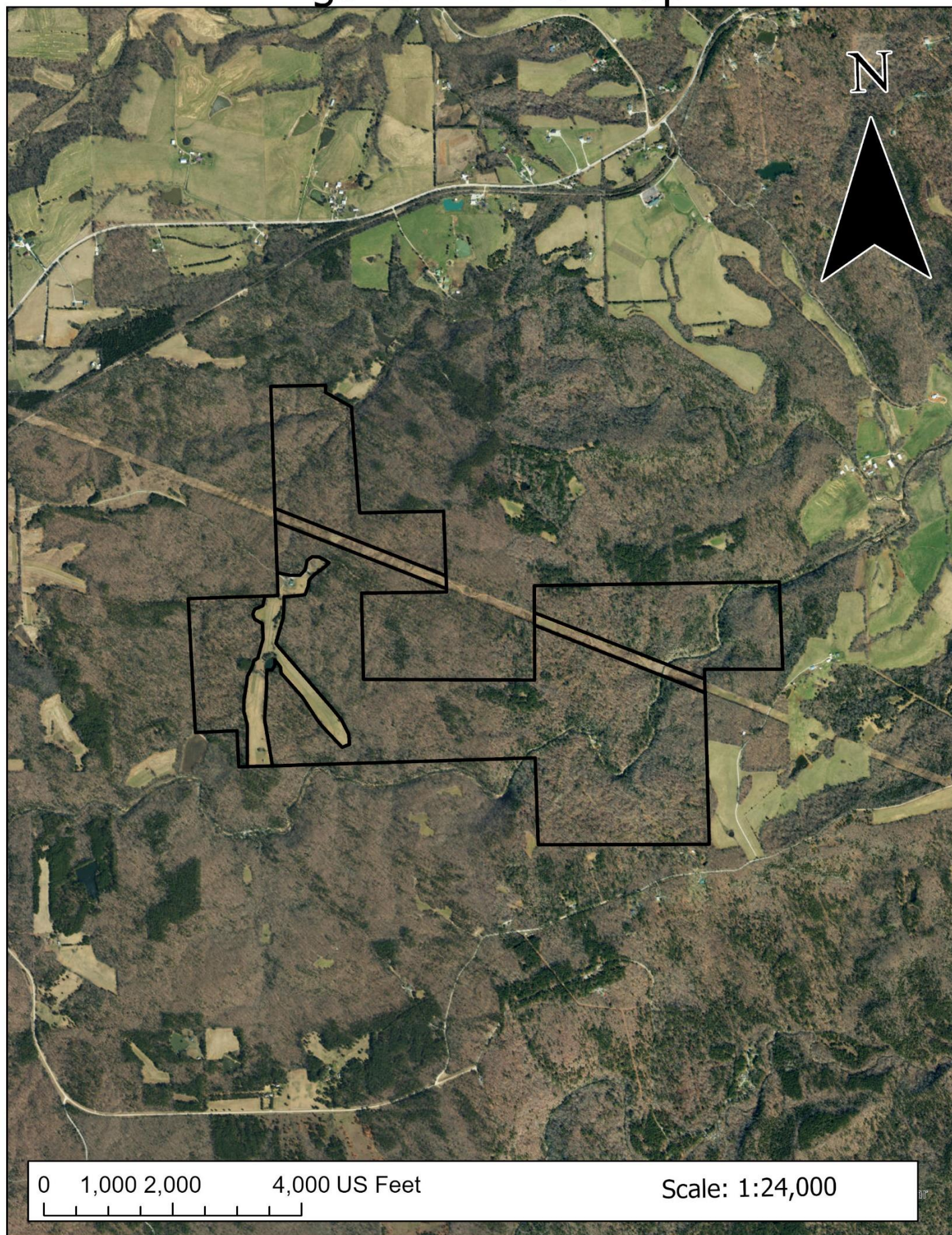


Figure 3. Topographic Map

