



160 +/- ACRES

**PIVOT-IRRIGATED
FARM
NANCE COUNTY, NE**

PRICE REDUCTION \$12,500/ACRE



KRAIG URKOSKI

Farm & Ranch Specialist
Clarks, Nebraska
Kraig.Urkoski@AgWestLand.com
308.548.8431



TOTAL ACRES (PER ASSESSOR) - 160 ±

Irrigated Acres	133.00 ±
Dryland Acres	22.82 ±
Other Acres	4.18 ±



PROPERTY TAXES - \$5,257.94

LEGAL DESCRIPTION

Northeast 1/4 Section 36, Township 18 North, Range 5 West

IRRIGATION INFORMATION

Located in the Lower Loup Resource District and has certified irrigation rights for 132 acres

IRRIGATION EQUIPMENT

- 8-Tower T&L center pivot, with 6 cylinder Isuzu power unit
- Well G-058160 drilled May 4, 1977, 1200 gpm, 138' static level, 246' pumping level, 326' well depth
- 2 approx 8,000 bushel grain bins

FSA INFORMATION

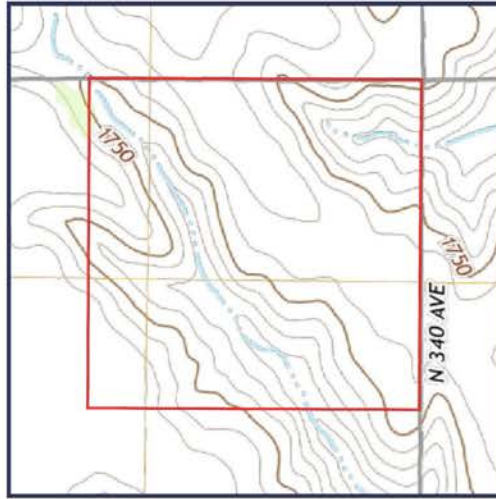
Total Cropland Acres: 154.64+/-
 Corn - 154.4 Base Acres - 172 PLC Yield
 Soybeans - 0.2 Base Acres - 49 PLC Yield
 Total Base Acres - 154.6

*Subject to 2025 cash rent lease.

*All mineral rights owned by seller, if any, to convey to buyer.

PROPERTY DIRECTIONS

From Genoa, head northwest on Highway 39 approximately 1 mile toward St. Edward. At 470th Street, turn west for 4 miles. At 340th Avenue, turn north for approximately 1 3/4 miles. The property is located on the west side of the road.



SOIL CODE	SOIL DESCRIPTION	ACRES	%	CPI	NCCPI	CAP
6757	Nora silt loam, 6 to 11 percent slopes, severely eroded	68.83	43.25	0	53	3e
6808	Moody silty clay loam, 0 to 2 percent slopes	48.01	30.17	88	71	2e
6681	Crofton silt loam, 17 to 30 percent slopes, eroded	35.67	22.41	0	37	6e
6774	Nora-Crofton complex, 11 to 17 percent slopes, eroded	6.63	4.17	50	60	4e
TOTALS		159.14(*)	100%	28.63	55.14	3.41

The information contained herein is as obtained by AgWest Land Brokers LLC—Holdrege, NE from the owner and other sources. Even though this information is considered reliable, neither broker nor owner make any guarantee, warranty, or representation as to the correctness of any data or descriptions. The accuracy of such statements should be determined through an independent investigation made by the prospective purchaser. This offer for sale is subject to prior sale, errors and omissions, change of price, terms or other conditions, or withdrawal from sale in whole or in part, by seller without notice and at the sole discretion of seller. Readers are urged to form their own independent conclusions and evaluations in consultation with legal counsel, accountants, and/or investment advisors concerning any and all material contained herein. Maps are for illustrative purposes only and are not intended to represent actual property lines.