



MOCK RANCHES

kw

HOUSTON

0 KEITH ROAD, BEAUMONT, TEXAS 77713
JEFFERSON COUNTY

139.305± ACRES | \$2,228,880



0 KEITH ROAD, BEAUMONT, TEXAS 77713

JEFFERSON COUNTY

PROPERTY DESCRIPTION.

If you're looking for a property with healthy long-term returns, look no further than this property in Beaumont's rapidly expanding West End. This 139-acre property has 1450' of road frontage and would be ideal for a new subdivision, buy/hold investment, or someone looking for lots of room to start a business. It is completely unrestricted with no flood zones, has city water and sewer available, and a current Ag Exemption on file. The location is definitely a superb find being conveniently located between Hwy 90 & Hwy 105. There are plenty of restaurants, shopping, and entertainment located within a 10-minute drive. Give us a call for more information or to schedule an appointment to view!

PROPERTY TYPE:

- Acreage
- Equestrian Property
- Hunting Land
- Recreational Land
- Commercial Acreage
- Farm
- Ranch
- Cattle Ranch

PROPERTY FEATURES:

- Corrals
- Electricity
- Hunting
- Irrigated
- Hwy-County Rd Frontage
- Development Potential



All information is deemed reliable, but is not warranted by MOCK RANCHES GROUP. All information is subject to change without prior notice.

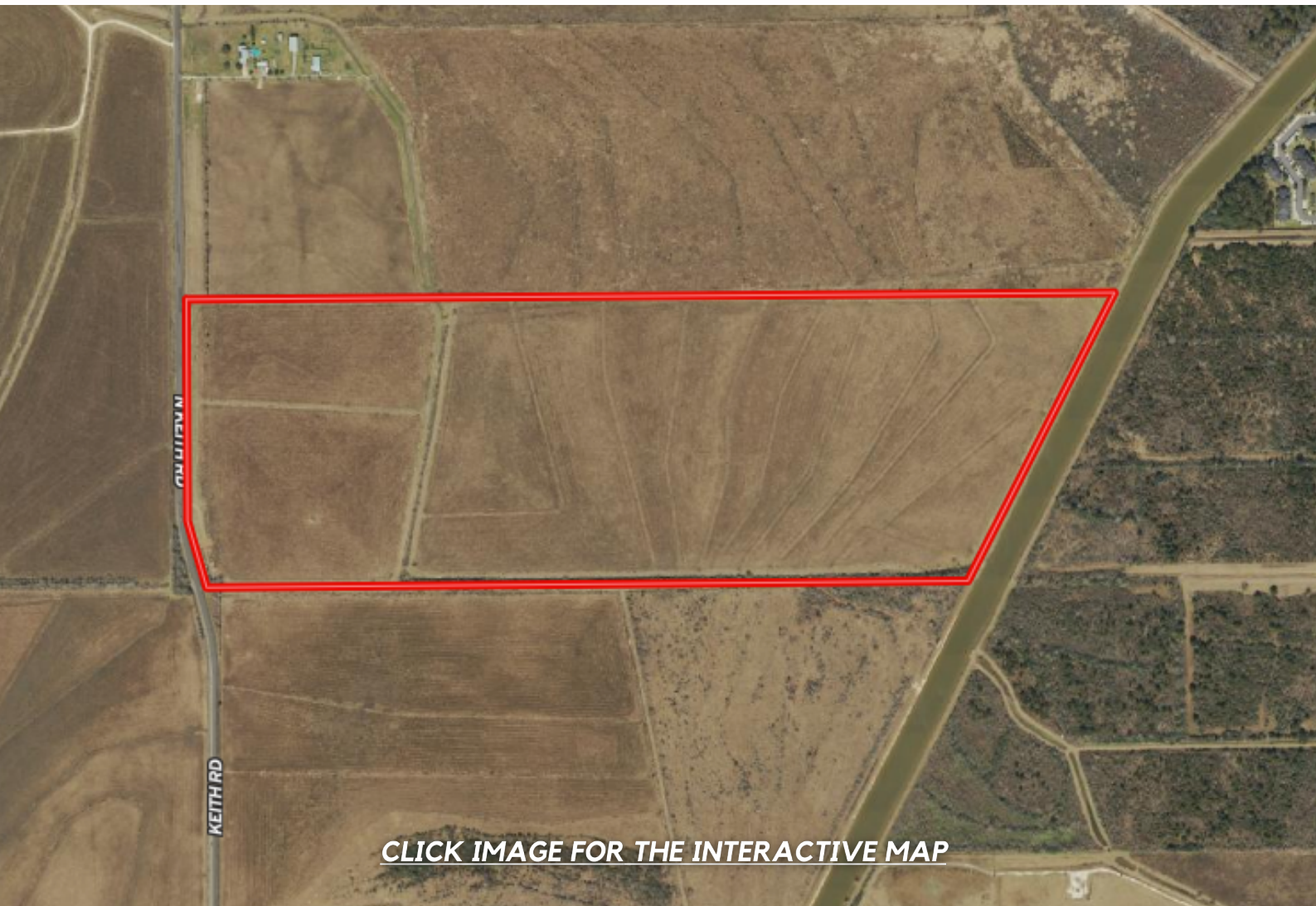
MOCK RANCHES | FOR SALE

000 4TH ST, GILCHRIST, TEXAS 77617
GALVESTON COUNTY



All information is deemed reliable, but is not warranted by MOCK RANCHES GROUP. All information is subject to change without prior notice.

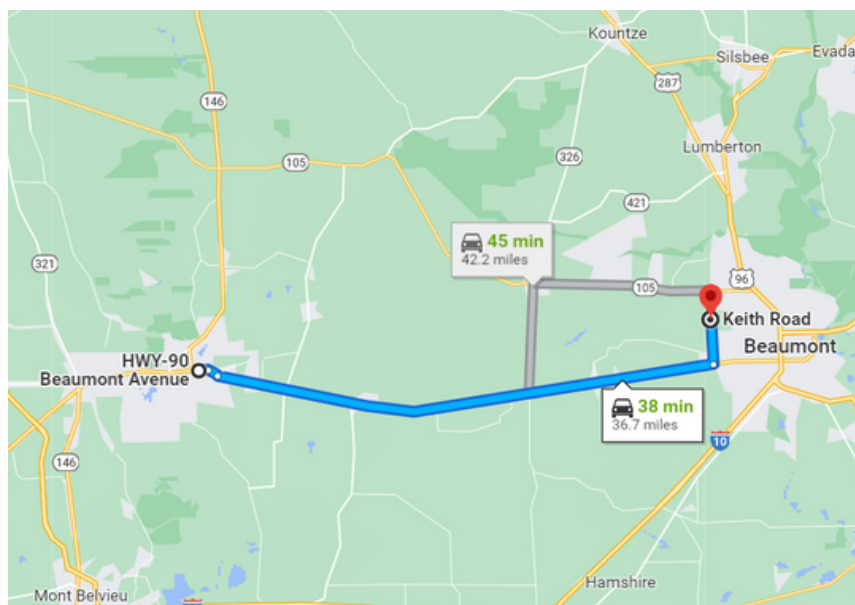
000 4TH ST, GILCHRIST, TEXAS 77617 GALVESTON COUNTY



[CLICK IMAGE FOR THE INTERACTIVE MAP](#)

DRIVING DIRECTION.

From Hwy 90 take Keith Rd north for 3.7 miles, property on right. From Hwy 105 take Keith Rd south for 1 mile, property on left.



All information is deemed reliable, but is not warranted by MOCK RANCHES GROUP. All information is subject to change without prior notice.

CHAD ANDRUS, ALC

Accredited Land Specialist

chadandrus@mockranches.com
832-402-9211
ww.mockranches.com



All materials and information received or derived from Mock Ranches its directors, officers, agents, advisors, affiliates and/or any third party sources are provided without representation or warranty as to completeness, veracity, or accuracy, condition of the property, compliance or lack of compliance with applicable governmental requirements, developability or suitability, financial performance of the property, projected financial performance of the property for any party's intended use or any and all other matters. Neither Mock Ranches, its directors, officers, agents, advisors, or affiliates makes any representation or warranty, express or implied, as to accuracy or completeness of the materials or information provided, derived, or received. Materials and information from any source, whether written or verbal, that may be furnished for review are not a substitute for a party's active conduct of its own due diligence to determine these and other matters of significance to such party. Mock Ranches will not investigate or verify any such matters or conduct due diligence for a party unless otherwise agreed in writing. EACH PARTY SHALL CONDUCT ITS OWN INDEPENDENT INVESTIGATION AND DUE DILIGENCE.

Ranch. financing made simple



Anthony Vaughan

WINNIE OFFICE

NMLS493828 | 409.400.4066 | capitalfarmcredit.com

Disclaimer: Although the Broker or Agent has used reasonable care in obtaining data, this material is submitted without representation, warranty, or guarantees, and is subject to errors and omissions. Moreover, all information is subject to changes by the owner as to price or terms, to prior lease, to withdrawal of the property from the market, and to other events beyond the control of the Broker.