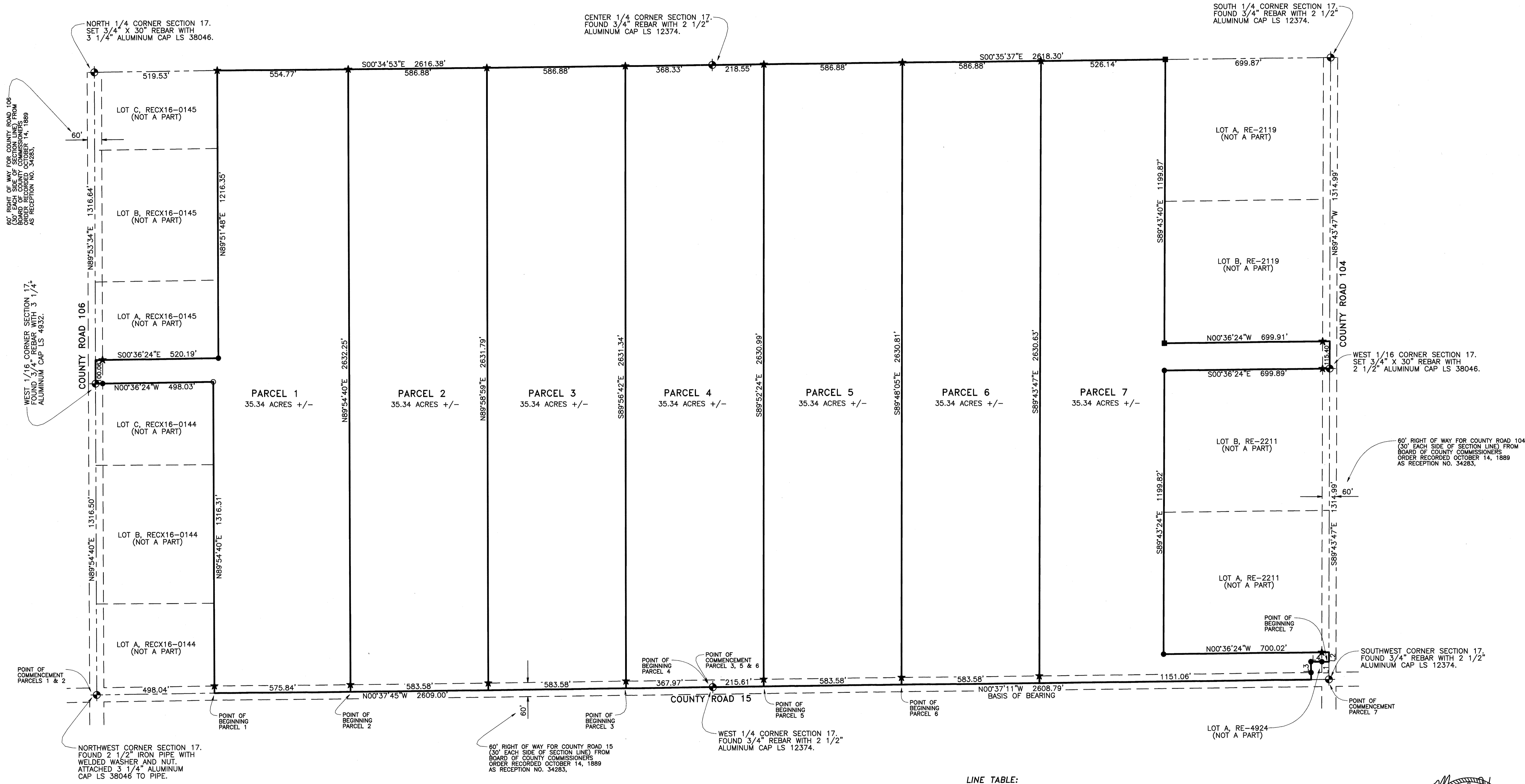


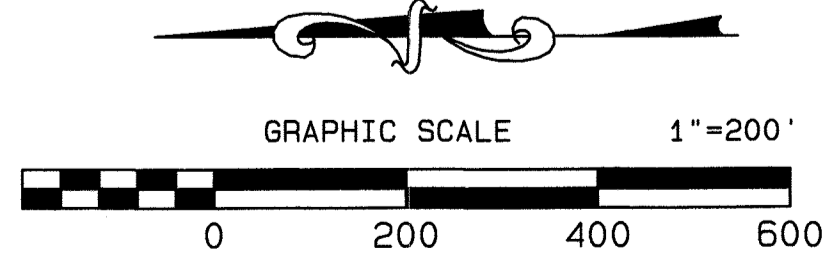
Land Survey Plat

Located in the West 1/2 of Section 17,
 Township 9 North, Range 67 West of the 6th P.M.,
 County of Weld, State of Colorado

Sheet 2 of 2



- LEGEND:**
- ◆ = SECTION CONTROL MONUMENT AS NOTED HEREON.
 - ★ = SET 5/8" X 24" REBAR WITH 2" ALUMINUM CAP LS 38046.
 - = FOUND 1/2" REBAR WITH YELLOW PLASTIC CAP LS 4932.
 - = FOUND 1/2" REBAR WITH NO CAP.
 - = FOUND 1/2" REBAR WITH YELLOW PLASTIC CAP LS 10740.



LINE TABLE:

LINE	BEARING	DISTANCE
L1	S89°43'47"E	74.90'
L2	S89°43'47"E	40.27'
L3	N89°19'01"E	76.16'
L4	S00°19'52"W	76.21'



American West
Land Surveying Co.
 A Family Owned Corporation Since 1991
 PO Box 129, Brighton, CO 80601 • P:303-659-1532 • mrh.amw@gmail.com
 SCALE 1" = 200' DRAWN BY: MRH CHECKED BY: CDH DATE: March 14, 2022