

# 10.5± Acre Homesite in Neshoba County, MS



**\$50,000**

Need a beautiful homesite in the Union School District of Neshoba County, Mississippi? This one has the flair with paved road frontage, surrounded by pastoral farms and homesites in the country, yet only one-quarter mile off Highway 15. It is situated 12 miles south of Philadelphia and one mile north of Union. Utilities are available. Rolling hills are currently covered in pine and hardwood timber. You only need a house plan and an imagination! Call Michael Halfacre to schedule your tour today!



**MICHAEL  
HALFACRE**

MANAGING BROKER

Office: 662.268.6333

Cell: 662.242.4220

MHalfacre@TomSmithLand.com



Expect More. Get More.

**A Real Estate Expert You Can Trust**

TomSmithLandandHomes.com

Information is believed to be accurate but not guaranteed.





## A Real Estate Expert *You Can Trust!*

**MICHAEL HALFACRE**

MANAGING BROKER

O: 662.268.6333 C: 662.242.4220

MHalfacre@TomSmithLand.com

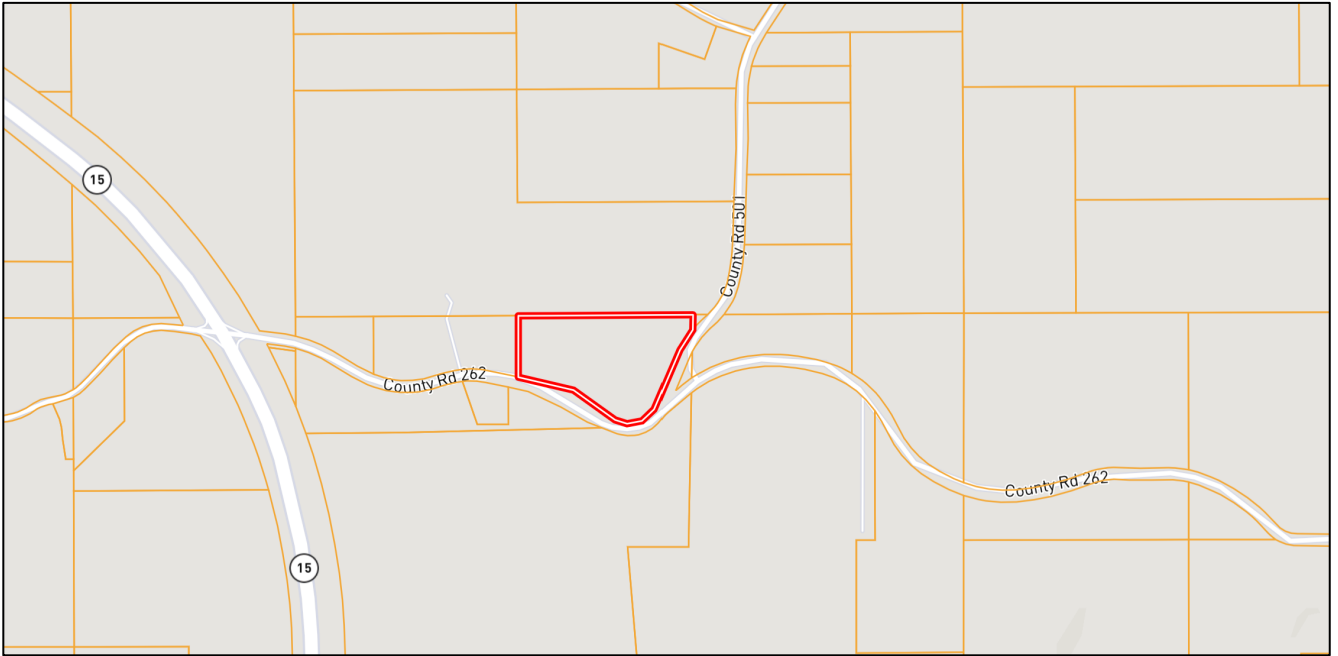
TomSmithLandandHomes.com



Expect More. Get More.



# OWNERSHIP MAP



# AERIAL MAP



## [INTERACTIVE MAP LINK](#)

**A Real Estate Expert**  
*You Can Trust!*

**MICHAEL HALFACRE**

MANAGING BROKER

O: 662.268.6333 C: 662.242.4220

MHalfacre@TomSmithLand.com

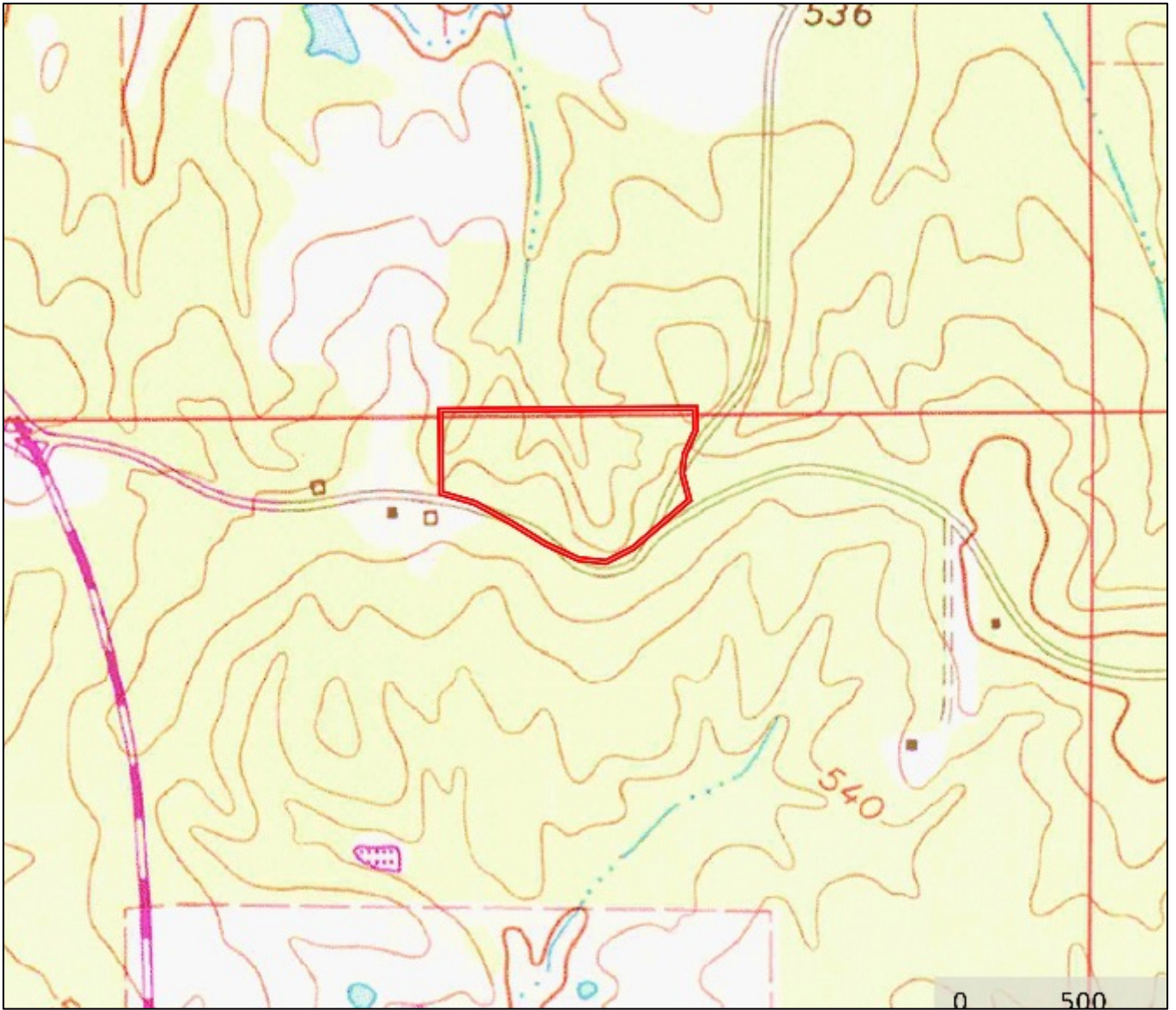
TomSmithLandandHomes.com



Expect More. Get More.



# TOPOGRAPHY MAP



**A Real Estate Expert**  
*You Can Trust!*

**MICHAEL HALFACRE**

MANAGING BROKER

O: 662.268.6333 C: 662.242.4220

MHalfacre@TomSmithLand.com

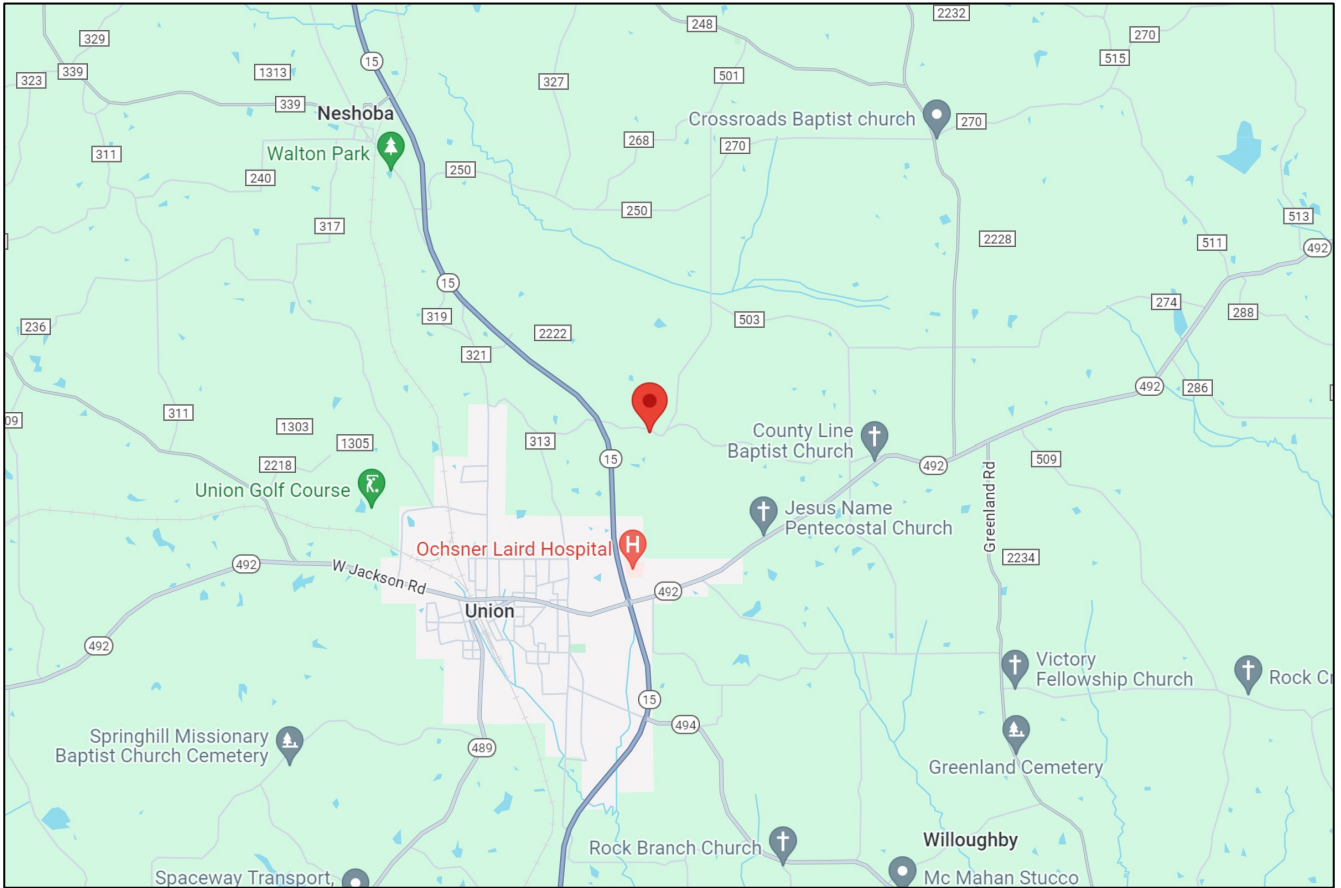
TomSmithLandandHomes.com



Expect More. Get More.



# DIRECTIONAL MAP



DIRECTIONS FROM THE INTERSECTION OF HIGHWAY 15 AND CR 492 IN UNION, MISSISSIPPI: Travel north on Hwy 15 for 1.5 miles. Turn right onto CR 262. After 0.4 miles, the property will be on the left, marked with a sign.

[GOOGLE MAP LINK](#)

**A Real Estate Expert**  
*You Can Trust!*

**MICHAEL HALFACRE**

MANAGING BROKER

O: 662.268.6333 C: 662.242.4220

MHalfacre@TomSmithLand.com

TomSmithLandandHomes.com



Expect More. Get More.

