

100± ACRES
AMITE COUNTY, MS
\$425,000



SMALLTOWN
HUNTING PROPERTIES
& REAL ESTATESM

OFFICE (769) 760-0005

THE AMITE 100

PROPERTY PROFILE

LOCATION:

- Crosby, MS 39633
- Amite County
- Frontage on Hwy 33
- 9± Miles North of Gloster
- 64± Miles North of Baton Rouge

COORDINATES:

- 31.280383, -91.045661

PROPERTY USE:

- Hunting
- Recreation
- Cabin Site
- Investment

PROPERTY INFORMATION:

- 100± Acres
- Rolling Terrain
- Creek Frontage
- Interior Roads/Trails
- Food Plots
- Pine & Hardwood Timber
- Electricity Available

TAX INFORMATION:

2023 - Estimated \$240.00

- Parcel- Part of 42-900-33-0001300, 42-900-33-0000900, 42-900-33-0001320



SMALLTOWN
HUNTING PROPERTIES
& REAL ESTATESM

DENNIS WEST

EAST MISSISSIPPI MANAGING BROKER

ALABAMA QUALIFYING BROKER

LOUISIANA ASSOCIATE BROKER

C: 601-248-4396 | O: 769-760-0005

dennis@smalltownproperties.com

2121 5th St., Ste 206 - Meridian, MS 39301

smalltownproperties.com

WELCOME TO THE AMITE 100

WELCOME TO THE AMITE 100, A PRIME OPPORTUNITY FOR DEER AND TURKEY HUNTING ENTHUSIASTS! Situated on Highway 33 just minutes from the town of Crosby, MS, this 100± acre Amite County tract is worth considering. The property features a mix of older pine timber and patches of hardwood with creek frontage, providing excellent wildlife habitat. Well-maintained trails and established food plots with stands are already in place, making this a turn-key hunting destination. If you are interested in building a home or cabin, there are several sites and electricity is available. The rolling hills add to the scenic beauty, and its location being approximately 80 minutes from Baton Rouge makes it a perfect recreational retreat or investment opportunity. Additional acreage is available.

To explore all the Amite 100 has to offer, call Dennis West today.



SMALLTOWN
HUNTING PROPERTIES
& REAL ESTATESM

DENNIS WEST

EAST MISSISSIPPI MANAGING BROKER

ALABAMA QUALIFYING BROKER

LOUISIANA ASSOCIATE BROKER

C: 601-248-4396 | O: 769-760-0005

dennis@smalltownproperties.com

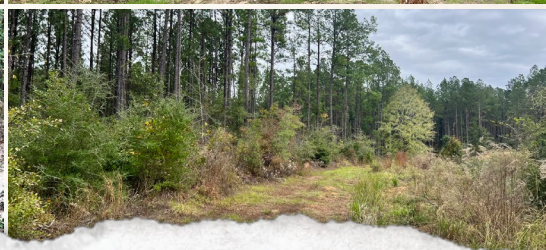
2121 5th St., Ste 206 - Meridian, MS 39301

smalltownproperties.com

Information is believed to be accurate but not guaranteed.

100± ACRES

AMITE COUNTY, MISSISSIPPI



SMALLTOWN
HUNTING PROPERTIES
& REAL ESTATESM

DENNIS WEST

EAST MISSISSIPPI MANAGING BROKER

ALABAMA QUALIFYING BROKER

LOUISIANA ASSOCIATE BROKER

C: 601-248-4396 | O: 769-760-0005

dennis@smalltownproperties.com

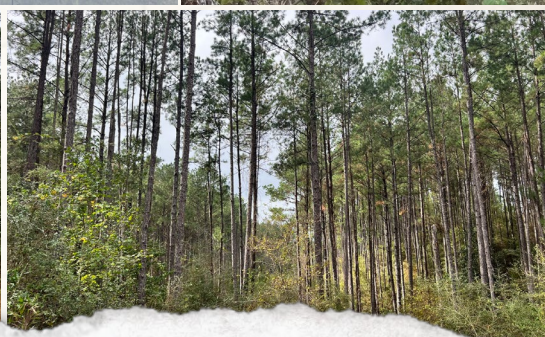
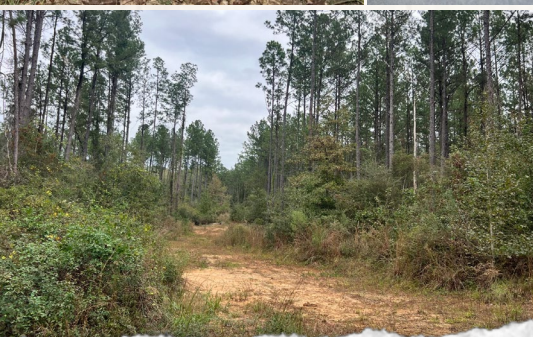
2121 5th St., Ste 206 - Meridian, MS 39301

smalltownproperties.com

Information is believed to be accurate but not guaranteed.

100± ACRES

AMITE COUNTY, MISSISSIPPI



SMALLTOWN
HUNTING PROPERTIES
& REAL ESTATESM

DENNIS WEST

EAST MISSISSIPPI MANAGING BROKER

ALABAMA QUALIFYING BROKER

LOUISIANA ASSOCIATE BROKER

C: 601-248-4396 | O: 769-760-0005

dennis@smalltownproperties.com

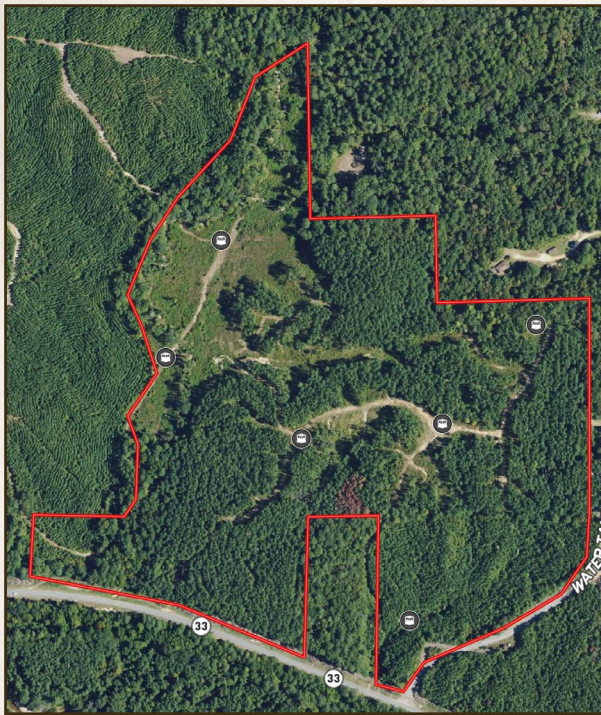
2121 5th St., Ste 206 - Meridian, MS 39301

smalltownproperties.com

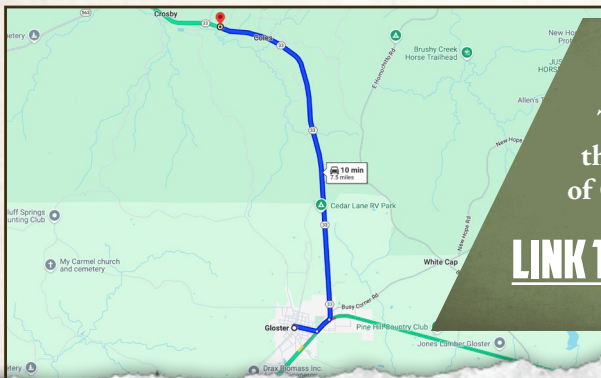
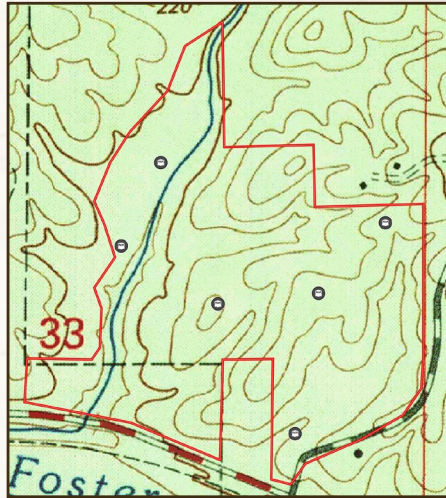
Information is believed to be accurate but not guaranteed.

100± ACRES

AMITE COUNTY, MISSISSIPPI



land **id.**
LINK



Directions From Gloster, MS:
Travel 9 miles north on Hwy 33 to
the property on the right just south
of Crosby.

[LINK TO GOOGLE MAP DIRECTIONS](#)



SMALLTOWN
HUNTING PROPERTIES
& REAL ESTATESM

DENNIS WEST

EAST MISSISSIPPI MANAGING BROKER

ALABAMA QUALIFYING BROKER

LOUISIANA ASSOCIATE BROKER

C: 601-248-4396 | O: 769-760-0005

dennis@smalltownproperties.com

2121 5th St., Ste 206 - Meridian, MS 39301

smalltownproperties.com



Information is believed to be accurate but not guaranteed.