



91± ACRE COMMERCIAL PROPERTY

Jefferson Davis County, MS

103 Golden Pine Road
Prentiss, MS 39474

\$618,000



DIRECTIONS FROM PRETISS, MS: Travel Highway 13 N for 6.8 miles. Turn left onto Golden Pine Drive. The property will be on your left. [GOOGLE MAP LINK](#)



CLAY SIMMONS, REALTOR®
Clay@TomSmithHomes.com
601.898.2772 office | 601.672.6864 cell



Expect More. Get More.

Call us today!



DAVID BELDEN, REALTOR®
DBelden@TomSmithLand.com
601.898.2772 office | 601.415.3884 cell

TomSmithLandandHomes.com

Information is believed to be accurate but not guaranteed.





Golden Pines Raceway

Mississippi's Premier Racetrack

Have you been searching for a fun, turn-key business opportunity? If so, we need to ride to this 91+/- acre Jefferson Davis County, MS property! Set up and ready for new owners, this property is equipped with a 3 Bed/2 Bath, 1200 SF, furnished mobile home, over 40 RV hookups, functional restrooms with flushable toilets, and a 5,000 SF, 50x100 warehouse/workshop currently used as a concession stand and store with all concession stand equipment to remain. Two dirt race tracks are on the property, including the sizeable main track and a smaller practice track, which are excellent for warmups or smaller kids needing to practice. A bike washing station is also at the tracks, so you can take care of all the dirt before returning home. There are several trails and three ponds, making this property perfect for many recreational uses. The ideal location is only one hour from Hattiesburg, 75 minutes from Jackson, 2.5 hours from New Orleans, LA, and 4 hours from Memphis, TN. Call Clay or David to see Golden Pines Raceway today!



CLAY SIMMONS, REALTOR®
Clay@TomSmithHomes.com
601.898.2772 office | 601.672.6864 cell



Call us today!



DAVID BELDEN, REALTOR®
DBelden@TomSmithLand.com
601.898.2772 office | 601.415.3884 cell

TomSmithLandandHomes.com

Information is believed to be accurate but not guaranteed.





CLAY SIMMONS, REALTOR®
 Clay@TomSmithHomes.com
 601.898.2772 office | 601.672.6864 cell



DAVID BELDEN, REALTOR®
 DBelden@TomSmithLand.com
 601.898.2772 office | 601.415.3884 cell

TomSmithLandandHomes.com

Information is believed to be accurate but not guaranteed.





CLAY SIMMONS, REALTOR®
Clay@TomSmithHomes.com
601.898.2772 office | 601.672.6864 cell

DAVID BELDEN, REALTOR®
DBelden@TomSmithLand.com
601.898.2772 office | 601.415.3884 cell

TomSmithLandandHomes.com

Information is believed to be accurate but not guaranteed.





CLAY SIMMONS, REALTOR®
 Clay@TomSmithHomes.com
 601.898.2772 office | 601.672.6864 cell



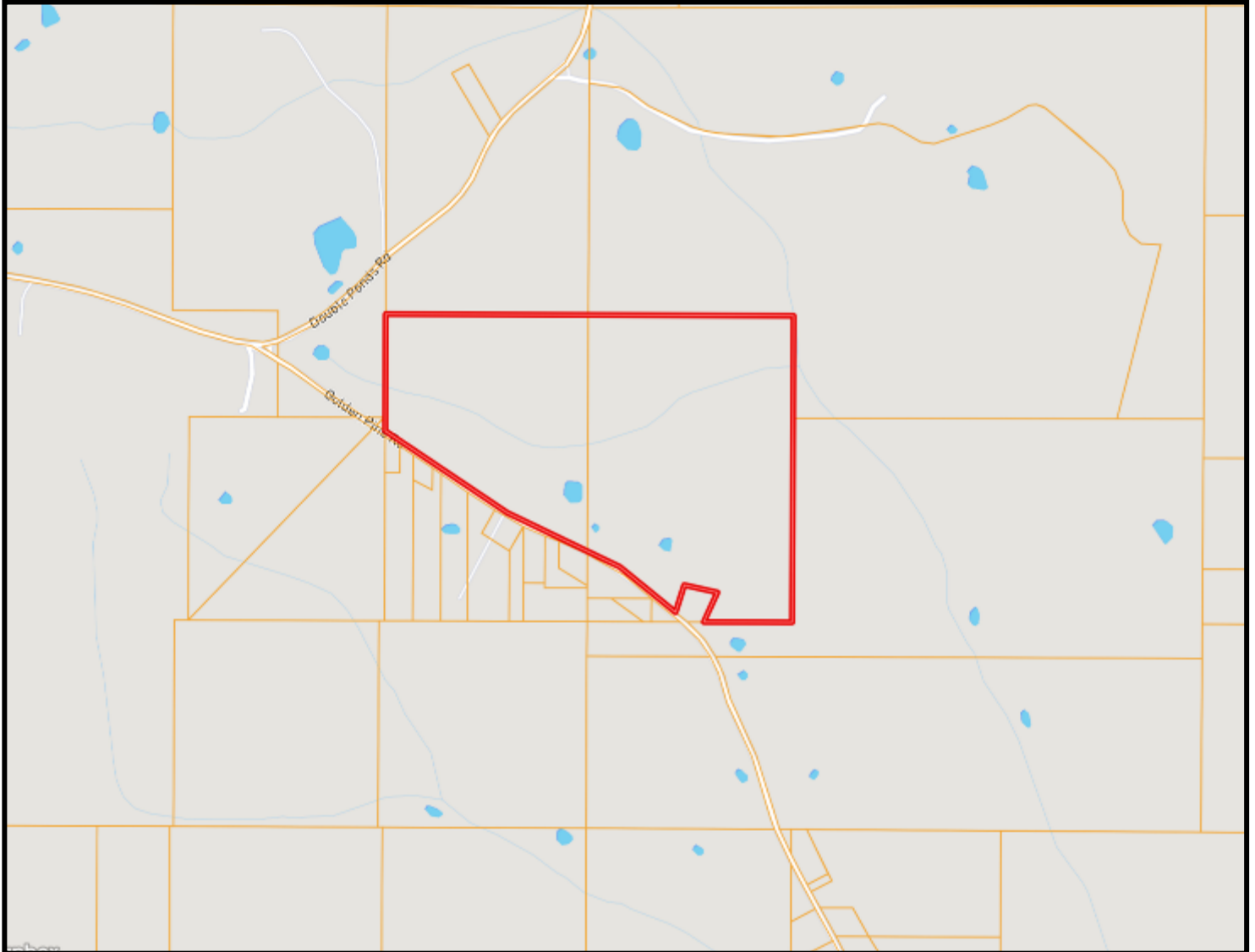
DAVID BELDEN, REALTOR®
 DBelden@TomSmithLand.com
 601.898.2772 office | 601.415.3884 cell

TomSmithLandandHomes.com

Information is believed to be accurate but not guaranteed.



OWNERSHIP MAP



CLAY SIMMONS, REALTOR®
Clay@TomSmithHomes.com
601.898.2772 office | 601.672.6864 cell



DAVID BELDEN, REALTOR®
DBelden@TomSmithLand.com
601.898.2772 office | 601.415.3884 cell

TomSmithLandandHomes.com

Information is believed to be accurate but not guaranteed.



AERIAL MAP



[CLICK HERE FOR THE LANDID INTERACTIVE MAP](#)

CLAY SIMMONS, REALTOR®
Clay@TomSmithHomes.com
601.898.2772 office | 601.672.6864 cell



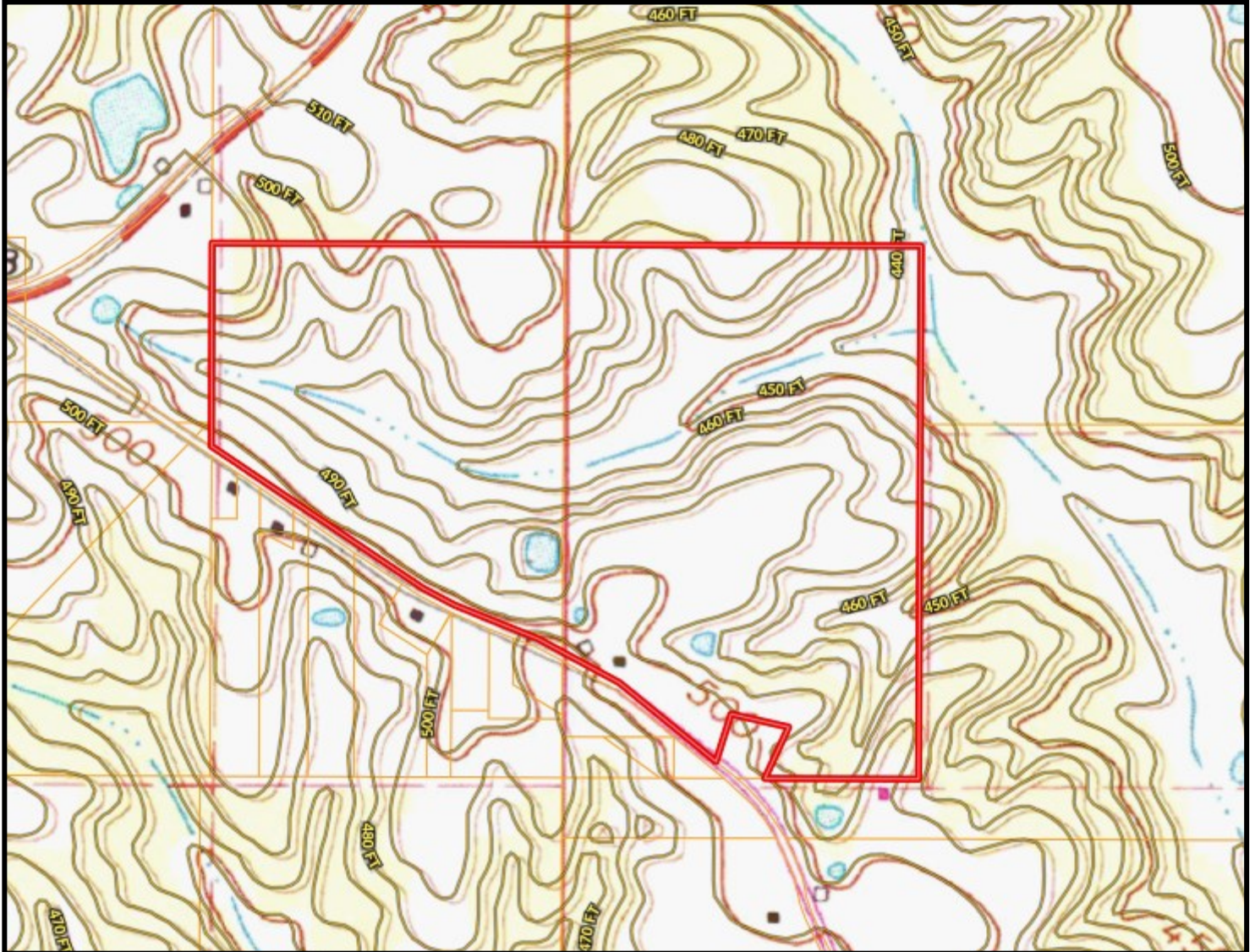
DAVID BELDEN, REALTOR®
DBelden@TomSmithLand.com
601.898.2772 office | 601.415.3884 cell

TomSmithLandandHomes.com

Information is believed to be accurate but not guaranteed.



TOPO MAP



CLAY SIMMONS, REALTOR[®]
Clay@TomSmithHomes.com
601.898.2772 office | 601.672.6864 cell



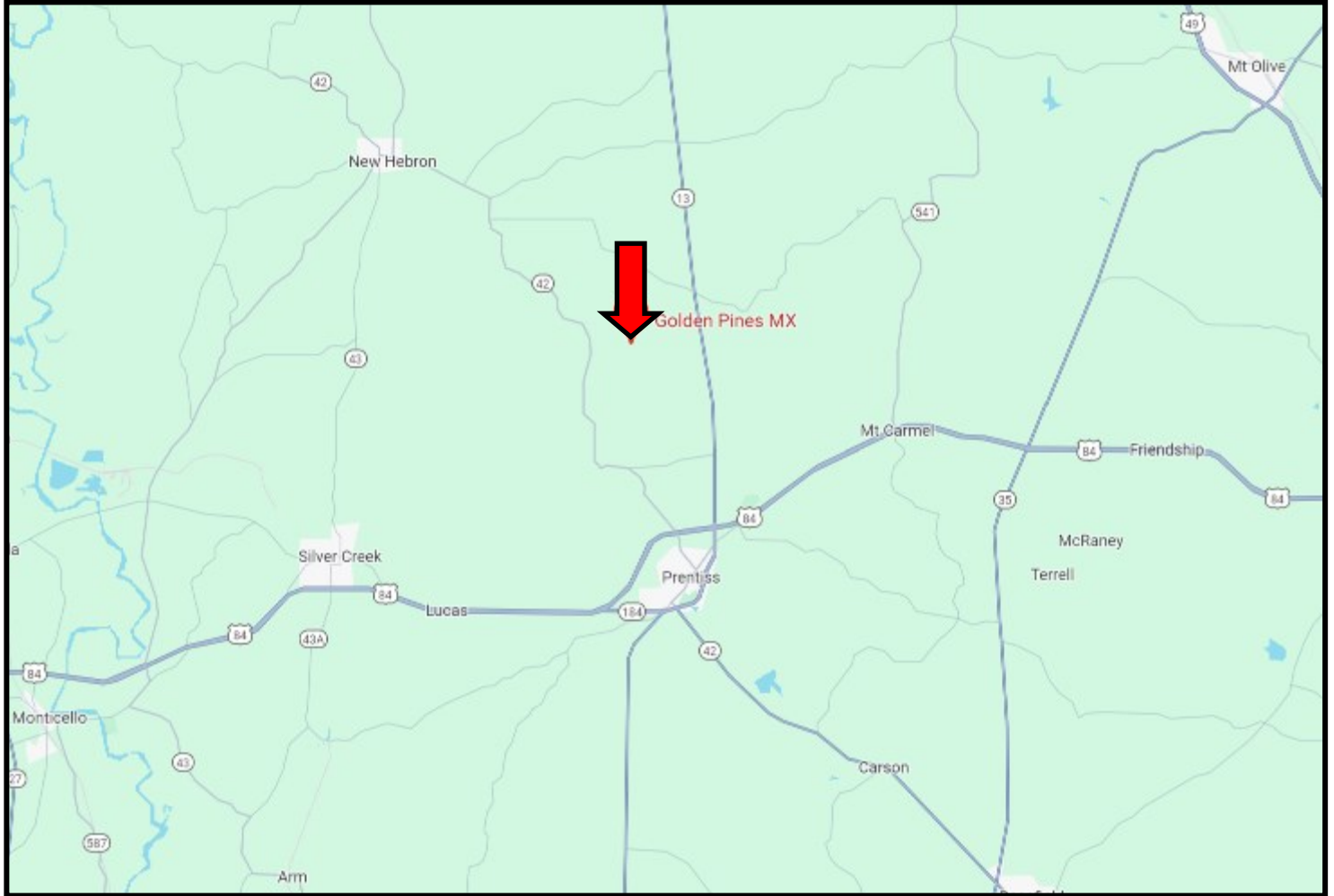
DAVID BELDEN, REALTOR[®]
DBelden@TomSmithLand.com
601.898.2772 office | 601.415.3884 cell

TomSmithLandandHomes.com

Information is believed to be accurate but not guaranteed.



DIRECTIONAL MAP



DIRECTIONS FROM PRENTISS, MS: Travel Highway 13 N for 6.8 miles. Turn left onto Golden Pine Drive. The property will be on your left.

103 Golden Pine Road Prentiss, MS 39474—Click for Google Map Link



CLAY SIMMONS, REALTOR®
Clay@TomSmithHomes.com
601.898.2772 office | 601.672.6864 cell



Expect More. Get More.

Call us today!



DAVID BELDEN, REALTOR®
DBelden@TomSmithLand.com
601.898.2772 office | 601.415.3884 cell

TomSmithLandandHomes.com

Information is believed to be accurate but not guaranteed.

