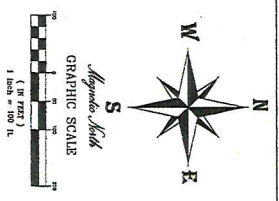
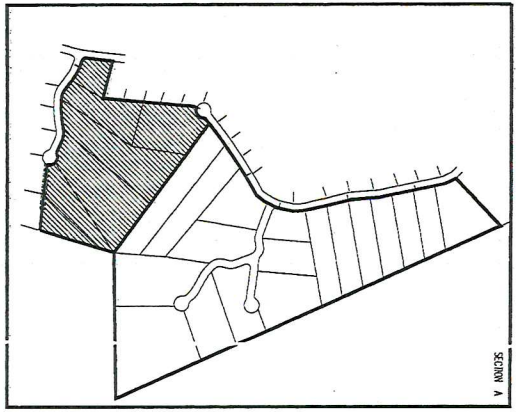


Swan Ridge Lake Resort, L.L.C. Section A



SUBJECT PROPERTY DOES NOT FALL WITHIN A FEDERALLY DESIGNATED FLOODPLAIN

ALL LOT CORNERS ARE TO BE MARKED WITH CONCRETE CARS UNLESS OTHERWISE SPECIFIED

ALL LOTS ARE SUBJECT TO A 15' UTILITY EASEMENT ALONG REAR AND SIDE LOT LINES

NO.	DESCRIPTION	DATE
1	PREPARED BY SURVEYOR	11/15/15
2	REVISION	11/15/15
3	REVISION	11/15/15
4	REVISION	11/15/15
5	REVISION	11/15/15
6	REVISION	11/15/15
7	REVISION	11/15/15
8	REVISION	11/15/15
9	REVISION	11/15/15
10	REVISION	11/15/15

Matthew L. 1-7-05
SURVEYOR GENERAL
STATE OF INDIANA

DATE	BY	REVISION
11/15/15	ML	PREPARED BY SURVEYOR
11/15/15	ML	REVISION
11/15/15	ML	REVISION
11/15/15	ML	REVISION
11/15/15	ML	REVISION
11/15/15	ML	REVISION
11/15/15	ML	REVISION
11/15/15	ML	REVISION
11/15/15	ML	REVISION
11/15/15	ML	REVISION

1. THESE LOTS ARE TO BE USED FOR RESIDENTIAL PURPOSES ONLY. NO COMMERCIAL OR INDUSTRIAL DEVELOPMENT IS PERMITTED ON ANY OF THESE LOTS.

2. THE LOTS ARE TO BE USED FOR RESIDENTIAL PURPOSES ONLY. NO COMMERCIAL OR INDUSTRIAL DEVELOPMENT IS PERMITTED ON ANY OF THESE LOTS.

3. THE LOTS ARE TO BE USED FOR RESIDENTIAL PURPOSES ONLY. NO COMMERCIAL OR INDUSTRIAL DEVELOPMENT IS PERMITTED ON ANY OF THESE LOTS.

4. THE LOTS ARE TO BE USED FOR RESIDENTIAL PURPOSES ONLY. NO COMMERCIAL OR INDUSTRIAL DEVELOPMENT IS PERMITTED ON ANY OF THESE LOTS.

5. THE LOTS ARE TO BE USED FOR RESIDENTIAL PURPOSES ONLY. NO COMMERCIAL OR INDUSTRIAL DEVELOPMENT IS PERMITTED ON ANY OF THESE LOTS.

6. THE LOTS ARE TO BE USED FOR RESIDENTIAL PURPOSES ONLY. NO COMMERCIAL OR INDUSTRIAL DEVELOPMENT IS PERMITTED ON ANY OF THESE LOTS.

7. THE LOTS ARE TO BE USED FOR RESIDENTIAL PURPOSES ONLY. NO COMMERCIAL OR INDUSTRIAL DEVELOPMENT IS PERMITTED ON ANY OF THESE LOTS.

8. THE LOTS ARE TO BE USED FOR RESIDENTIAL PURPOSES ONLY. NO COMMERCIAL OR INDUSTRIAL DEVELOPMENT IS PERMITTED ON ANY OF THESE LOTS.

9. THE LOTS ARE TO BE USED FOR RESIDENTIAL PURPOSES ONLY. NO COMMERCIAL OR INDUSTRIAL DEVELOPMENT IS PERMITTED ON ANY OF THESE LOTS.

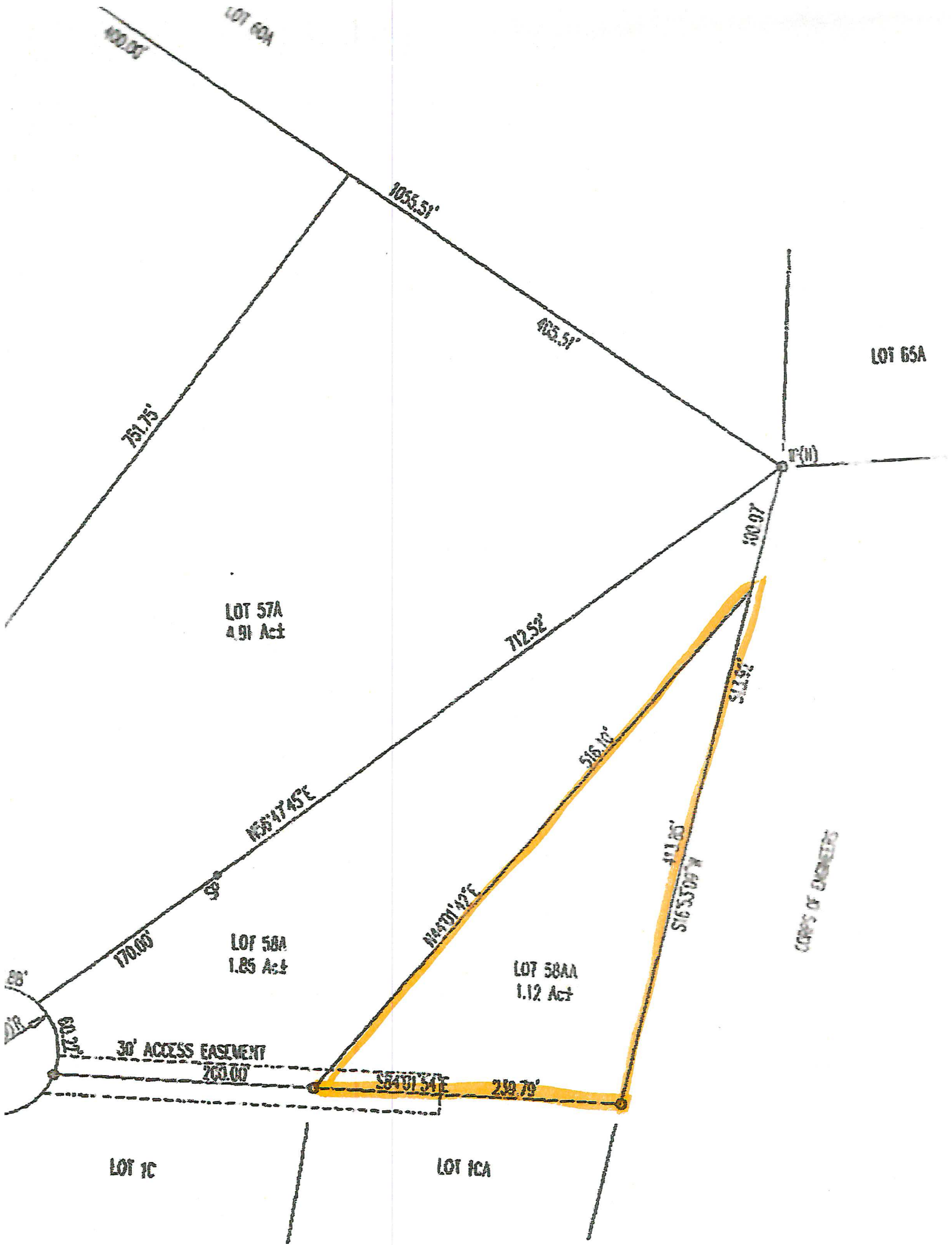
10. THE LOTS ARE TO BE USED FOR RESIDENTIAL PURPOSES ONLY. NO COMMERCIAL OR INDUSTRIAL DEVELOPMENT IS PERMITTED ON ANY OF THESE LOTS.

Burdick Surveying

141 East Chestnut Street, Columbus, IN 47201
Phone: (317) 242-2222 Fax: (317) 242-2222

Swan Ridge Lake Resort, L.L.C.
Section A, Sheet 2 of 2

DATE: 11/15/15
DRAWN BY: ML
CHECKED BY: ML
DATE: 11/15/15



LOT 60A

1020.05'

1055.51'

415.51'

751.75'

LOT 65A

P(11)

LOT 57A
4.91 A±

712.52'

100.97'

LOT 58A
1.85 A±

N83°17'45"E

S16°10'

S12.82'

170.00'

LOT 58AA
1.12 A±

N42°01'42"E

S16°33'07"W

CORPS OF ENGINEERS

88'

30' ACCESS EASEMENT

260.00'

S84°01'54"E

259.79'

LOT 1C

LOT 1CA

60.27'

DIR