



Duck Curve Farms

2,678 ACRES • IMMOKALEE EXCHANGE, IMMOKALEE, FL

Trent Saunders, ALC

863.640.0390
trent@saundersrealestate.com

David Lapham

517.990.4907
davidl@saundersrealestate.com



Property Overview

SALE PRICE: \$25,000,000

OFFERING SUMMARY

Acreage:	2,678 Acres
Price / Acre:	\$9,335
City:	Immokalee
County:	Hendry
Property Type:	Land: Irrigated vegetable farms. Crops produced include green beans, bell peppers, and other high value vegetables.

PROPERTY OVERVIEW

2,678-acre agricultural property in Hendry County, featuring 1,644 acres of productive farmland. The property has two irrigated farms: Section 33 (733 acres) and Duck Curve (1,964 acres), both equipped with water infrastructure including 43 wells averaging 50-100 feet in depth. The irrigation system utilizes both diesel and electric pumps, providing reliable water access throughout the property. A 15,000 square foot packing/storage facility constructed between 2008-2011 offers immediate operational capacity. With established infrastructure and productive farmland, Immokalee Exchange presents a turnkey opportunity for agricultural investment in Florida's fertile Hendry County.

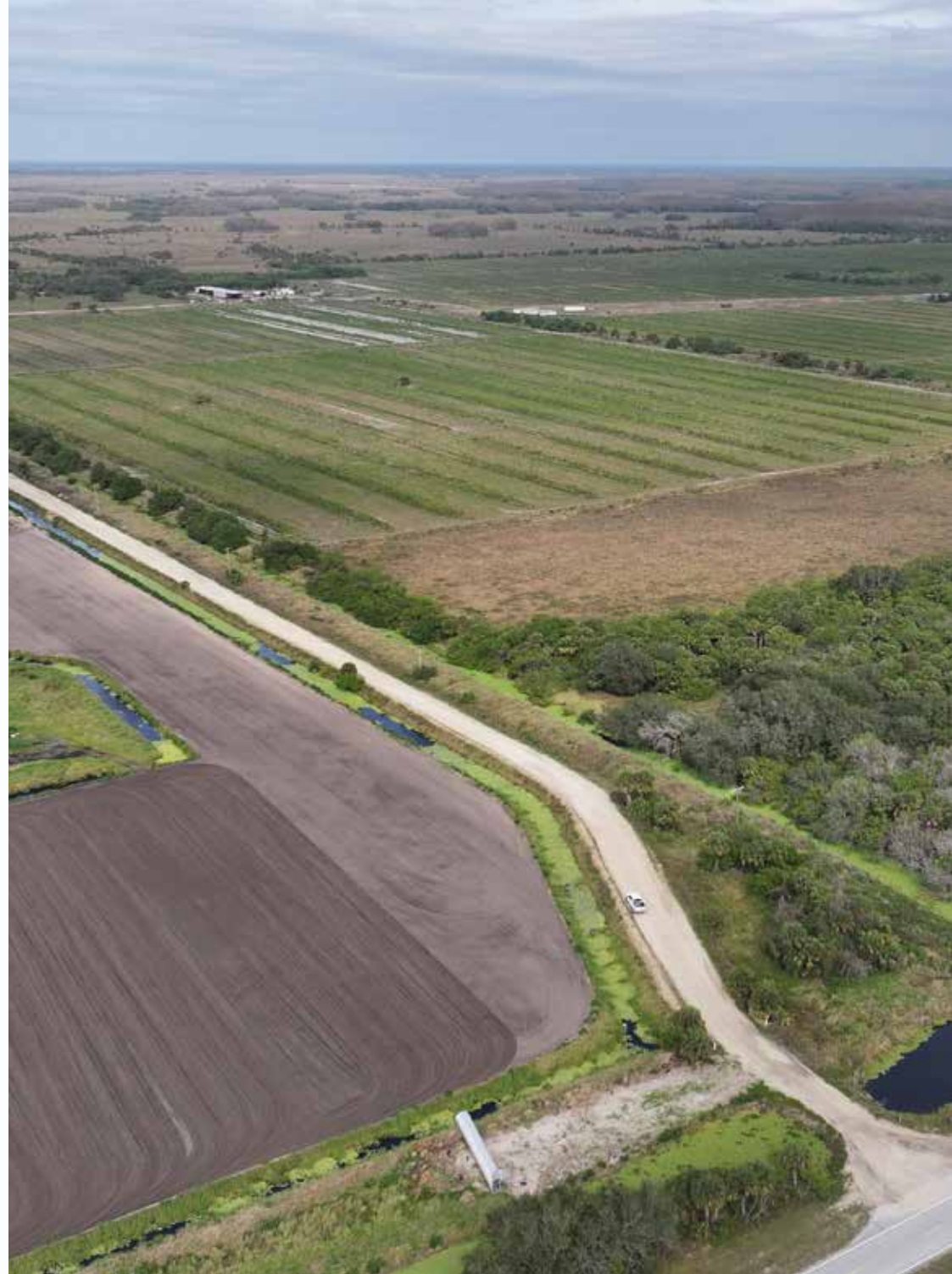


Specifications & Features

Water Source & Utilities: Water sourced from 43 wells across both farms (13 at Section 33, 30 at Duck Curve). Wells average 50-100 feet in depth. Irrigation systems utilize turbine pumps with diesel and electric motors. Twenty-five of Duck Curve's wells are currently active for irrigation.

Structures & Year Built: 15k sq ft facility (packing/storage/office)

Equipment in the Sale: Irrigation system



Location & Driving Directions

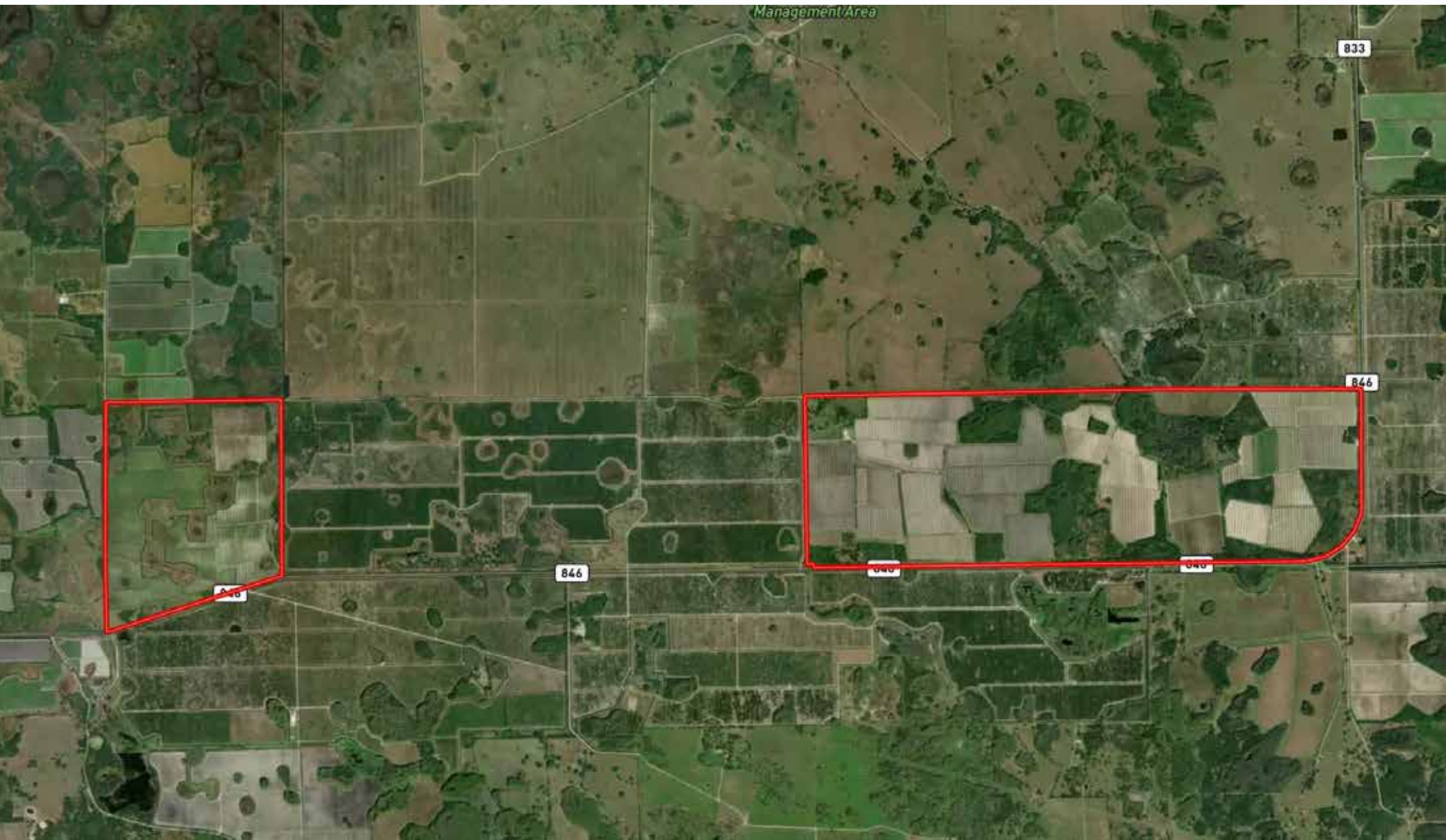


Parcel: 1-32-46-33-A00-0001.0000 1-32-46-32-A00-0001.0000 1-32-47-05-A00-0003.0000 1-32-47-06-A00-0001.0000 1-32-46-31-A00-0001.0000 1-31-46-36-A00-0003.0000 1-31-47-01-A00-0003.0000 1-31-46-33-A00-0002.0000 1-31-47-04-A00-0001.0000



Property Map

IMMOKALEE, HENDRY COUNTY, FLORIDA



Additional Photos





ABOUT SAUNDERS REAL ESTATE

Saunders Real Estate is a full-service land and commercial real estate brokerage with over \$6 billion in transactions representing buyers, sellers, investors, institutions, and landowners since 1996. We are recognized nationally as an authority on all types of land, including agriculture, ranch, recreation, residential development, and international properties. Our commercial real estate services include marketing, property management, leasing and tenant representation, valuation, business brokerage, and advisory and counseling services for office, retail, industrial, and multifamily properties. Our firm also features an auction company, forestry division, international partnerships, and hunting lease management.



HEADQUARTERS

1723 Bartow Road
Lakeland, FL 33801
863.648.1528

ORLANDO

605 E Robinson Street
Suite 410
Orlando, FL 32801
407.516.4300

NORTH FLORIDA

356 NW Lake City Avenue
Lake City, FL 32055
352.364.0070

GEORGIA

203 E Monroe Street
Thomasville, GA 31792
229.299.8600

ARKANSAS

112 W Center St, Suite 501
Fayetteville, AR 72701
479.582.4113

