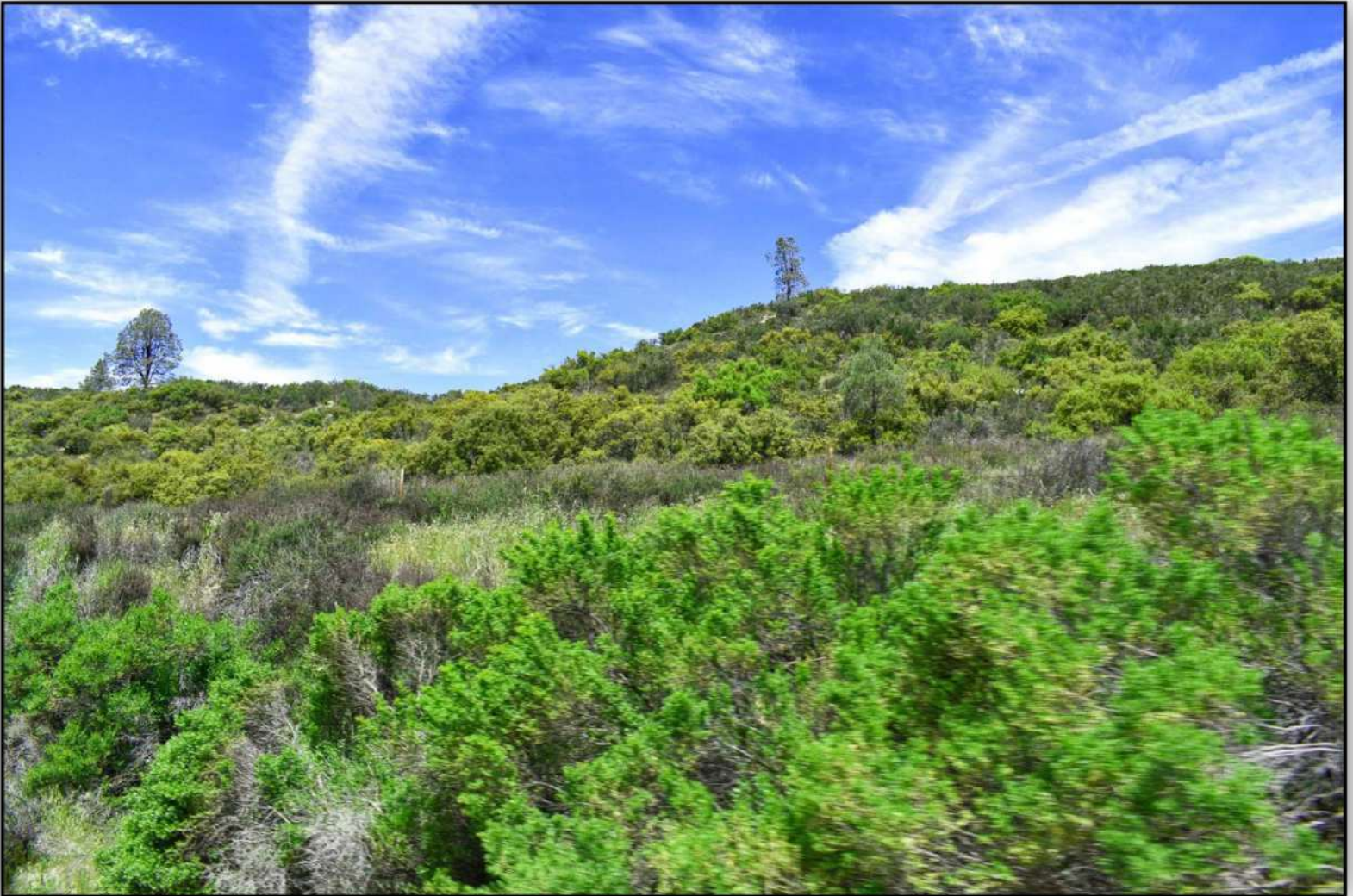


160 acres
Lockwood San Ardo Road
Lockwood, CA 93932



THE WINE COUNTRY TEAM
OF RE/MAX PARKSIDE REAL ESTATE
www.PasoRoblesWineCountryRealEstate.com

Vacant Land Lockwood-San Ardo Road

Seize the chance to own this stunning 160-acre property located near the entrance of Williams Hill Campground. With spectacular views, varied terrain, and rich wildlife, this land is a dream come true for nature lovers and adventure seekers alike. The adjoining BLM Land enhances the appeal, providing a vibrant habitat for wildlife, making it an ideal setting for hunters. Plus, if you relish fishing, boating, or water sports, you'll appreciate that Lake San Antonio and Lake Nacimiento are just a short drive away.

Accessibility is a key feature of this property, boasting road frontage along Lockwood San Ardo Road, an unpaved county road, while being conveniently positioned just 30 minutes from Highway 101. Experience the beauty of rural living in a perfect location. Don't miss out on this exceptional opportunity to create the lifestyle you've always envisioned!



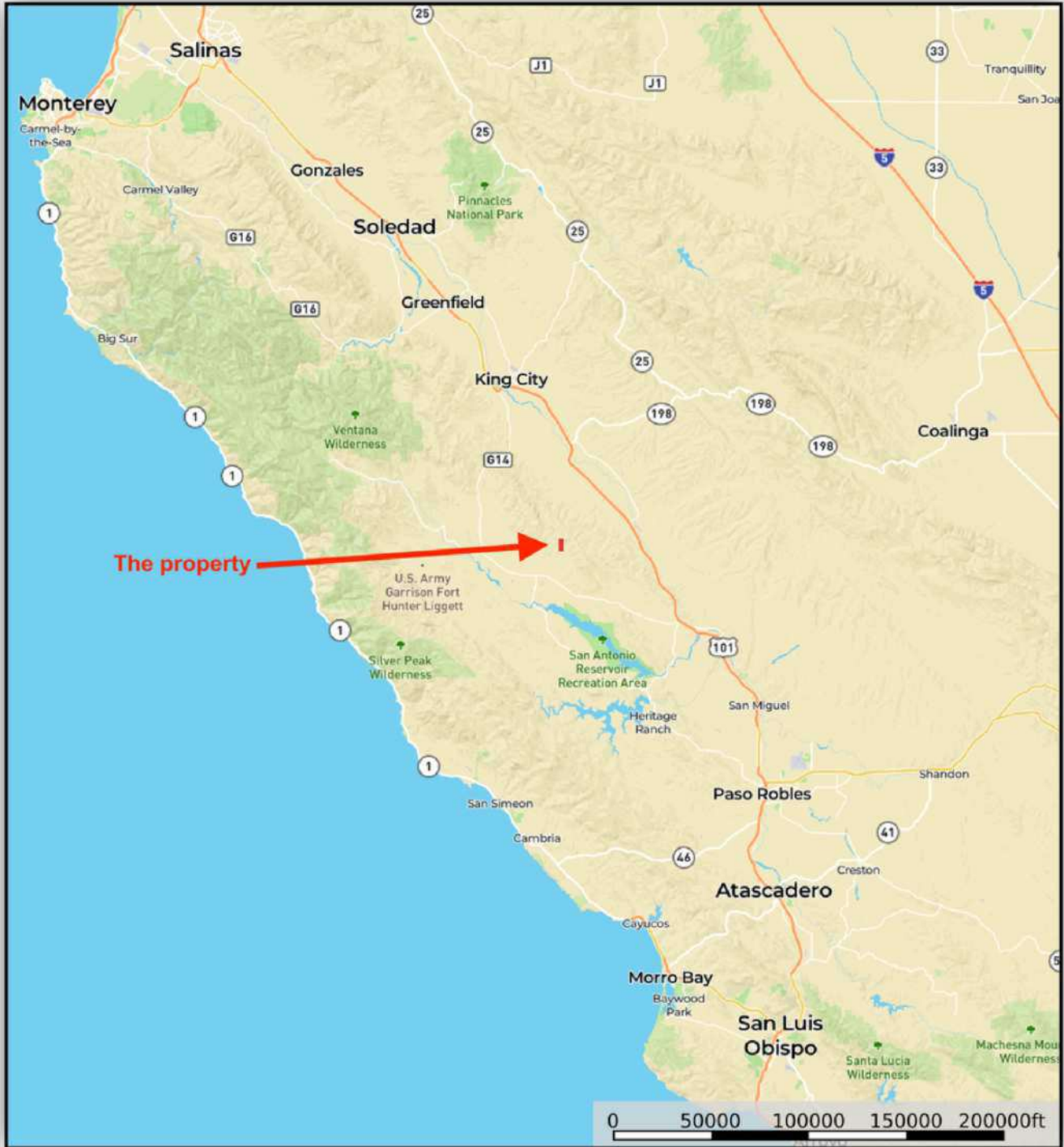
General Vicinity Map

Area highlights~

~ Lake San Antonio- approx 20 Minutes
~ Lake Nacimiento, approx 30 minutes
~ Ft Hunter Liggett, approx 15 minutes
hiking and hunting land varies.
~Adjacent to BLM land and the Williams
Hill recreational area.

Estimated Drive Times

~ Paso Robles Wine Country, 45-60 minutes
~ Monterey, approx 90 minutes
~ Santa Cruz/San Jose, Approx 2 hours
~ San Francisco/Walnut Creek, 3+/- hours
~ Fresno/ Bakersfield, 2.5+/- hours







Aerial Map

Aerial Map
with
Contour Lines





160+/- acres with frontage along
Lockwood San Ardo Road

Priced at \$299,000



THE WINE COUNTRY TEAM

OF RE/MAX PARKSIDE REAL ESTATE

Brokerage and Appraisals In San Luis Obispo & Monterey Counties

CentralCoast-Ranches.com



Alicia DiGrazia

RE Lic# 01427039

Appraisal # 3002619

805-835-3373

PasoREGal@gmail.com



Sam Martinus

Lic# 02206062

831-601-2884

SamMartinus45@gmail.com



Tom Martinus

Lic# 01099385

831-596-0129

Homestead@tcsn.net



Wade Taylor

RE Lic# 00783476

Appraisal # AG005403

805-550-1078

Wade@prlandman.com