



SMALLTOWN
HUNTING PROPERTIES
& REAL ESTATESM

48± ACRES
MURRAY COUNTY, GA
\$960,000



OFFICE (478) 382-2880 | WWW.SMALLTOWNPROPERTIES.COM

THE MURRAY 48

PROPERTY PROFILE

LOCATION:

- S HWY 411
Chatsworth, GA 30705
- Murray County
- 1.2± Miles W of Carters
Lake Dam
- 11.6± Miles S of Chatsworth
- 16.9± Miles E of Resaca
- 20.7± Miles NE of Calhoun
- 23.1± Miles SE of Dalton

PROPERTY USE:

- Development
- Investment
- Home Site

COORDINATES:

- 34.60668, -84.70937

PROPERTY INFORMATION:

- 48± Acres
- Blank Slate
- Small Stream
- Graded Dirt Pad
- Frontage on Hiawassee Road
& Hwy 411

TAX INFORMATION:

- Parcel # 0092-004
- \$1,073.66



SMALLTOWN
HUNTING PROPERTIES
& REAL ESTATESM

JUSTIN HASTY, ALC

LAND SPECIALIST

C: 706-671-4554

O: 478-382-2880

justin@smalltownproperties.com

P.O. Box 340 - Rocky Face, GA 30740

smalltownproperties.com

Information is believed to be accurate but not guaranteed.

WELCOME TO THE MURRAY 48

INTRODUCING A BLANK SLATE WITH A REALLY NICE BACKDROP: THE MURRAY 48! Situated less than 1.5 miles from Carters Lake Dam, this North Georgia property is ideal for a wedding venue, a campground, a subdivision, a farm, or your own homestead. Within the past twelve months, the 48± acre Murray County tract has been logged, stumped, and cleaned up. With 1,000± feet of road frontage on Hwy 411 and over 2,500 feet along Hiawassee Road, there is ample opportunity for access. A small stream/creek runs through the back of the property, providing a water source for your livestock or offering a place for the kids to splash around. You will also find a flat, graded pad already in place sitting up on a knoll looking toward the mountains and Carters Lake...a perfect spot for your forever home, barndominium, or whatever else you can dream of!

The Murray 48 offers many options and the location is perfect being conveniently located to Chatsworth, Dalton, Calhoun and Resaca.

Call Justin Hasty today to experience #thesmalltownway.



SMALLTOWN
HUNTING PROPERTIES
& REAL ESTATESM

JUSTIN HASTY, ALC

LAND SPECIALIST

C: 706-671-4554

O: 478-382-2880

justin@smalltownproperties.com

P.O. Box 340 - Rocky Face, GA 30740

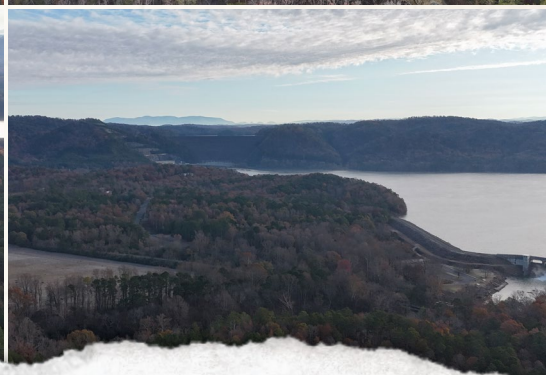
smalltownproperties.com

Information is believed to be accurate but not guaranteed.



48± ACRES

MURRAY COUNTY, GEORGIA



SMALLTOWN
HUNTING PROPERTIES
& REAL ESTATESM

JUSTIN HASTY, ALC

LAND SPECIALIST

C: 706-671-4554

O: 478-382-2880

justin@smalltownproperties.com

P.O. Box 340 - Rocky Face, GA 30740

smalltownproperties.com

Information is believed to be accurate but not guaranteed.

48± ACRES

MURRAY COUNTY, GEORGIA



SMALLTOWN
HUNTING PROPERTIES
& REAL ESTATESM

JUSTIN HASTY, ALC

LAND SPECIALIST

C: 706-671-4554

O: 478-382-2880

justin@smalltownproperties.com

P.O. Box 340 - Rocky Face, GA 30740

smalltownproperties.com

Information is believed to be accurate but not guaranteed.



48± ACRES

MURRAY COUNTY, GEORGIA



SMALLTOWN
HUNTING PROPERTIES
& REAL ESTATESM

JUSTIN HASTY, ALC

LAND SPECIALIST

C: 706-671-4554

O: 478-382-2880

justin@smalltownproperties.com

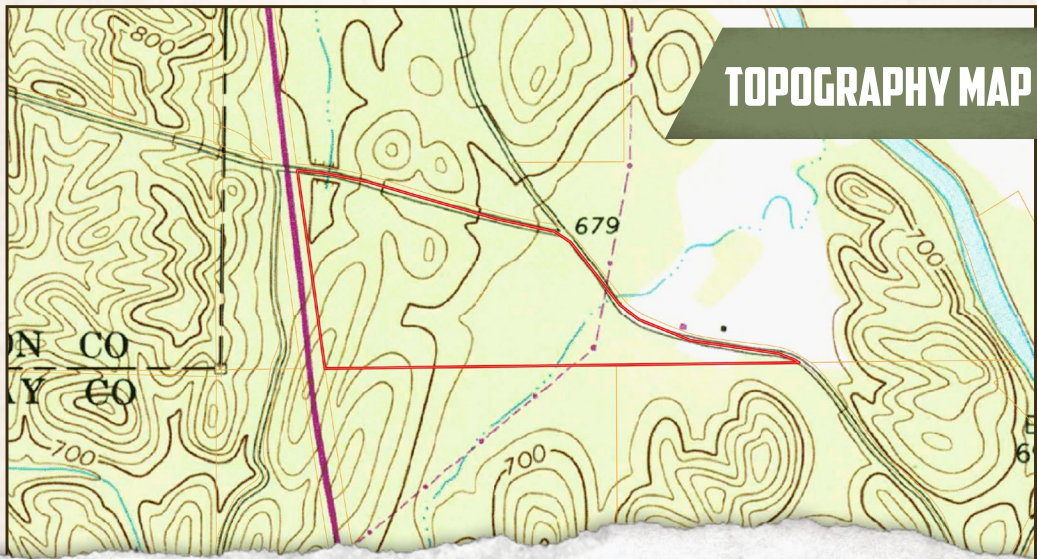
P.O. Box 340 - Rocky Face, GA 30740

smalltownproperties.com

Information is believed to be accurate but not guaranteed.

48± ACRES

MURRAY COUNTY, GEORGIA



SMALLTOWN
HUNTING PROPERTIES
& REAL ESTATESM

JUSTIN HASTY, ALC

LAND SPECIALIST

C: 706-671-4554

O: 478-382-2880

justin@smalltownproperties.com

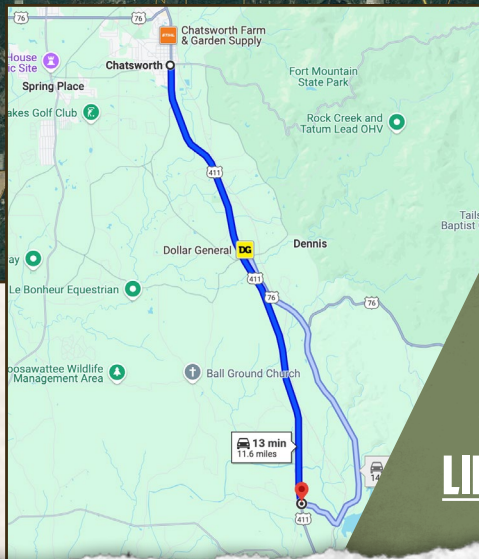
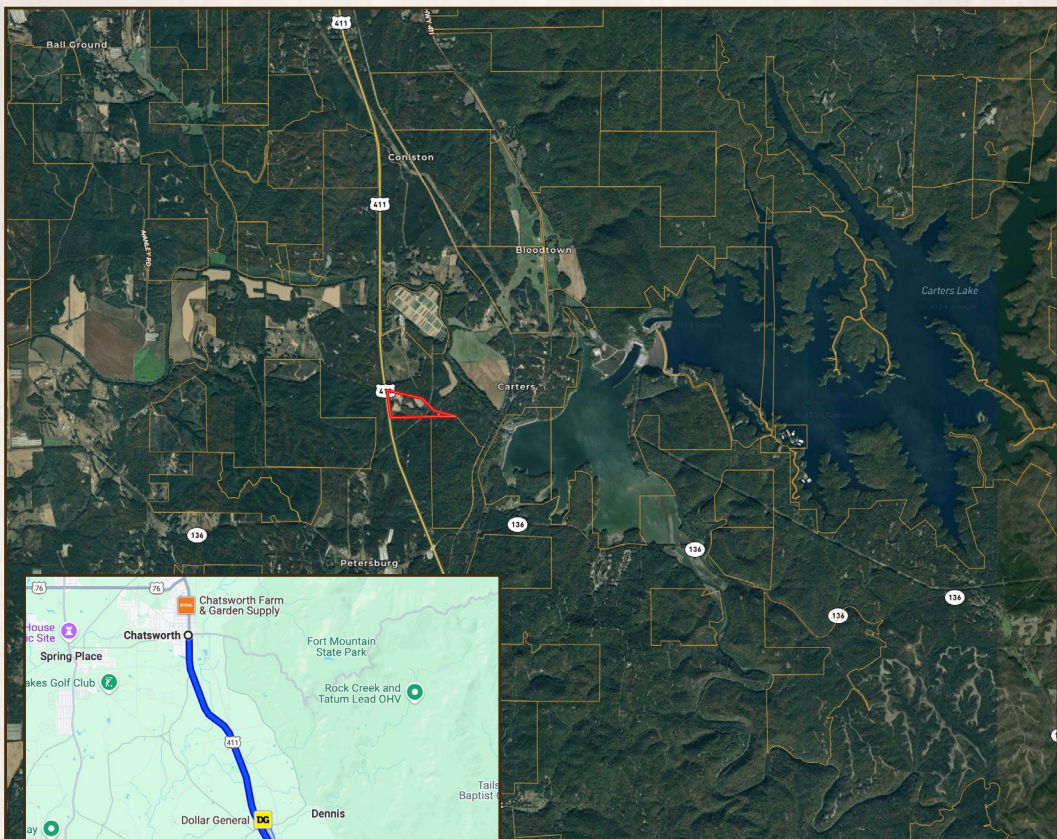
P.O. Box 340 - Rocky Face, GA 30740

smalltownproperties.com

Information is believed to be accurate but not guaranteed.

48± ACRES

MURRAY COUNTY, GEORGIA



Directions From Chatsworth, GA:
Travel south on Hwy 411. Turn left
on Hiwassee Road and the property
will be on the right.

[LINK TO GOOGLE MAP DIRECTIONS](#)



SMALLTOWN
HUNTING PROPERTIES
& REAL ESTATESM

JUSTIN HASTY, ALC

LAND SPECIALIST

C: 706-671-4554

O: 478-382-2880

justin@smalltownproperties.com

P.O. Box 340 - Rocky Face, GA 30740

smalltownproperties.com

Information is believed to be accurate but not guaranteed.

