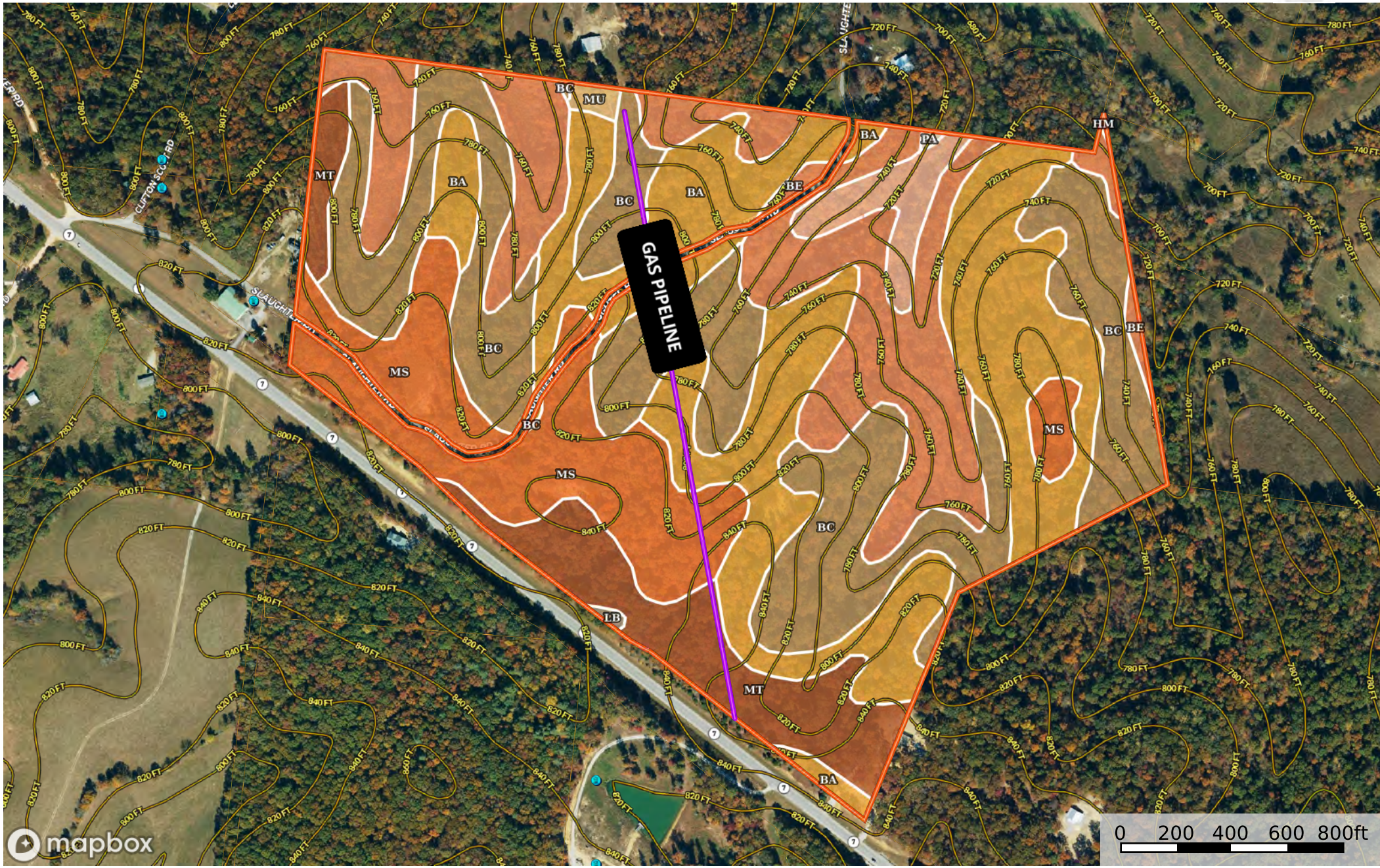


Sweeney parcels

Maury County, Tennessee, 119 AC +/-



- Pipeline
- Boundary
- Water Wells

|  All Polygons 121.43 ac

SOIL CODE	SOIL DESCRIPTION	ACRES	%	CPI	NCCPI	CAP
Bc	Bodine gravelly silt loam, 12 to 20 percent slopes	34.11	28.09	0	36	6s
Ba	Bodine gravelly silt loam, 5 to 12 percent slopes	33.7	27.75	0	40	4s
Be	Bodine gravelly silt loam, 20 to 40 percent slopes	22.11	18.21	0	9	7s
Ms	Mountview silt loam, 2 to 5 percent slopes	17.07	14.06	0	82	2e
Mt	Mountview silt loam, sloping shallow phase	10.9	8.98	0	69	3e
Hm	Ocana gravelly silt loam, 0 to 3 percent slopes, occasionally flooded	2.9	2.39	0	71	2w
Mu	Mountview silt loam, eroded, sloping shallow phase	0.42	0.35	0	65	3e
Lb	Lindside silt loam, local alluvium phase	0.13	0.11	0	89	2w
Pa	Pace cherty silt loam, eroded sloping phase	0.09	0.07	0	69	3e
TOTALS		121.43(*)	100%	-	42.64	4.68

(*) Total acres may differ in the second decimal compared to the sum of each acreage soil. This is due to a round error because we only show the acres of each soil with two decimal.

|  Boundary 83.96 ac

SOIL CODE	SOIL DESCRIPTION	ACRES	%	CPI	NCCPI	CAP
Ba	Bodine gravelly silt loam, 5 to 12 percent slopes	24.26	28.9	0	40	4s
Bc	Bodine gravelly silt loam, 12 to 20 percent slopes	21.71	25.86	0	36	6s
Be	Bodine gravelly silt loam, 20 to 40 percent slopes	13.54	16.13	0	9	7s
Ms	Mountview silt loam, 2 to 5 percent slopes	12.0	14.29	0	82	2e
Mt	Mountview silt loam, sloping shallow phase	9.33	11.11	0	69	3e
Hm	Ocana gravelly silt loam, 0 to 3 percent slopes, occasionally flooded	2.9	3.45	0	71	2w
Lb	Lindside silt loam, local alluvium phase	0.13	0.15	0	89	2w
Pa	Pace cherty silt loam, eroded sloping phase	0.09	0.11	0	69	3e
TOTALS		83.96(*)	100%	-	44.37	4.53

(*) Total acres may differ in the second decimal compared to the sum of each acreage soil. This is due to a round error because we only show the acres of each soil with two decimal.

|  Boundary 37.47 ac

SOIL CODE	SOIL DESCRIPTION	ACRES	%	CPI	NCCPI	CAP
Bc	Bodine gravelly silt loam, 12 to 20 percent slopes	12.4	33.09	0	36	6s
Ba	Bodine gravelly silt loam, 5 to 12 percent slopes	9.44	25.19	0	40	4s
Be	Bodine gravelly silt loam, 20 to 40 percent slopes	8.57	22.87	0	9	7s
Ms	Mountview silt loam, 2 to 5 percent slopes	5.07	13.53	0	82	2e
Mt	Mountview silt loam, sloping shallow phase	1.57	4.19	0	69	3e

Mu	Mountview silt loam, eroded, sloping shallow phase	0.42	1.12	0	65	3e
TOTALS		37.47(*)	100%	-	38.76	5.02

(*) Total acres may differ in the second decimal compared to the sum of each acreage soil. This is due to a round error because we only show the acres of each soil with two decimal.

