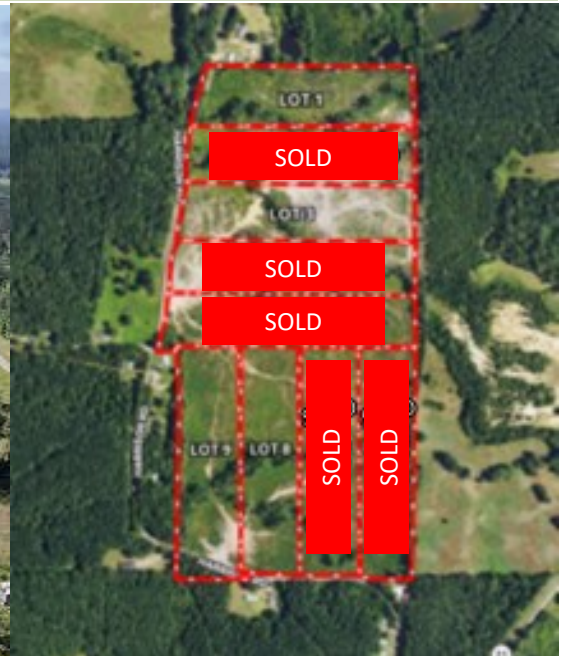




Spacious Recreational Homesites 10± Acres in Scott County, MS



\$37,900

This is a rare opportunity to build your dream home or family retreat on one of nine spacious lots in Scott County, MS, each averaging 10 acres. These individual lots are being sold separately, allowing you to create your private estate. The property has been recently cleared, providing a clean slate to bring your vision to life. The lots are perfect for a custom home or vacation getaway with water and electricity on the road. Enjoy the peaceful, rural setting with plenty of open space while still having convenient access to nearby amenities. Don't miss your chance to own one of these beautiful lots in Scott County! Contact Dale or David to schedule your tour today!



DALE WILDS
REALTOR®

O: 601.898.2772 | C: 662.715.7109
Dale@TomSmithLand.com



DAVID BELDEN
ALC®, REALTOR®

O: 601.898.2772 | C: 601.415.3884
DBelden@TomSmithLand.com

TomSmithLandandHomes.com

Information is believed to be accurate but not guaranteed.





DALE WILDS
REALTOR®

O: 601.898.2772 | C: 662.715.7109
Dale@TomSmithLand.com

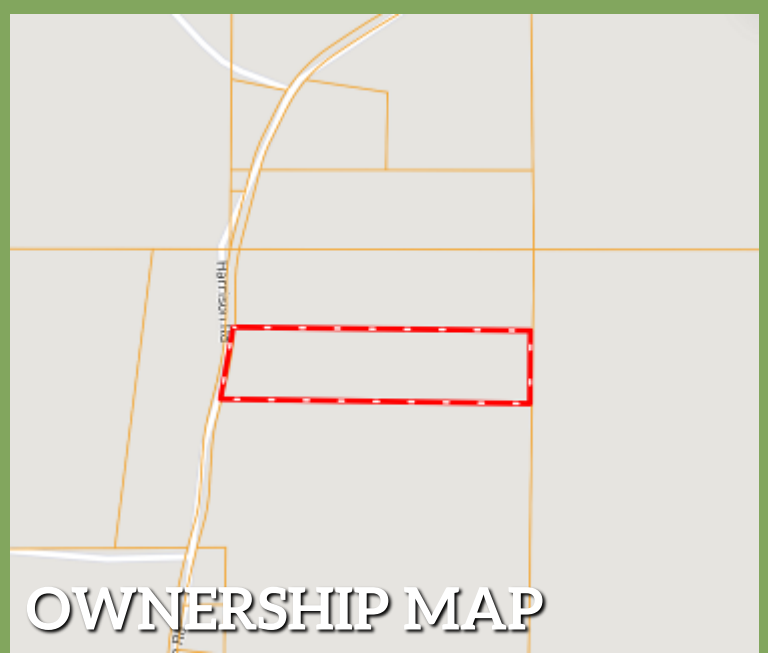
DAVID BELDEN
ALC®, REALTOR®

O: 601.898.2772 | C: 601.415.3884
DBelden@TomSmithLand.com

TomSmithLandandHomes.com

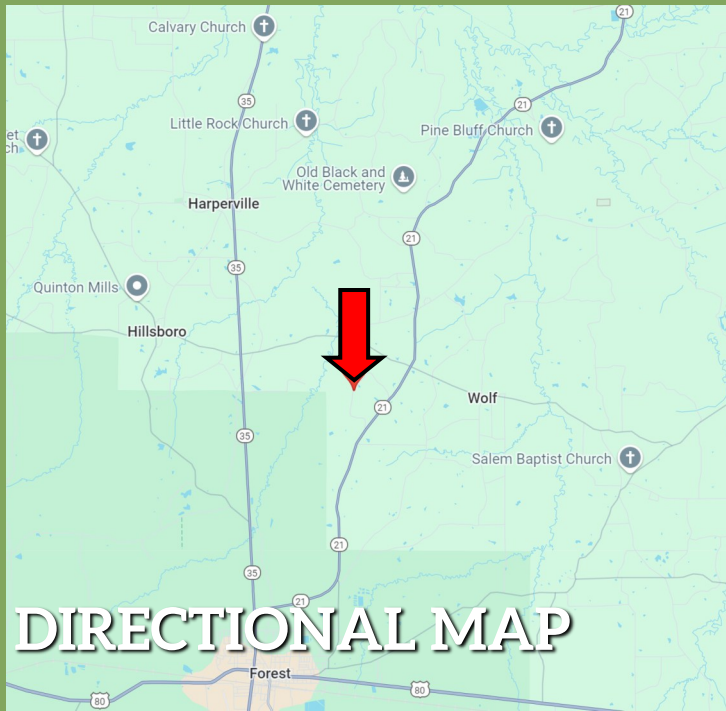
Information is believed to be accurate but not guaranteed.





AERIAL MAP

OWNERSHIP MAP



DIRECTIONAL MAP

Directions from I-20 and Hwy 35 in Forest, MS: Take exit 88 towards Forest. Turn onto Hwy 35 and travel 3.2 miles. Turn right onto Hwy 21 and travel 4.8 miles. Turn left onto Harrison Road. The property will be on the right.
[Google Map Link](#)
[Click Here for an Interactive Map Link](#)



DALE WILDS
REALTOR®

O: 601.898.2772 | C: 662.715.7109
Dale@TomSmithLand.com



DAVID BELDEN
ALC®, REALTOR®

O: 601.898.2772 | C: 601.415.3884
DBelden@TomSmithLand.com

TomSmithLandandHomes.com

Information is believed to be accurate but not guaranteed.

