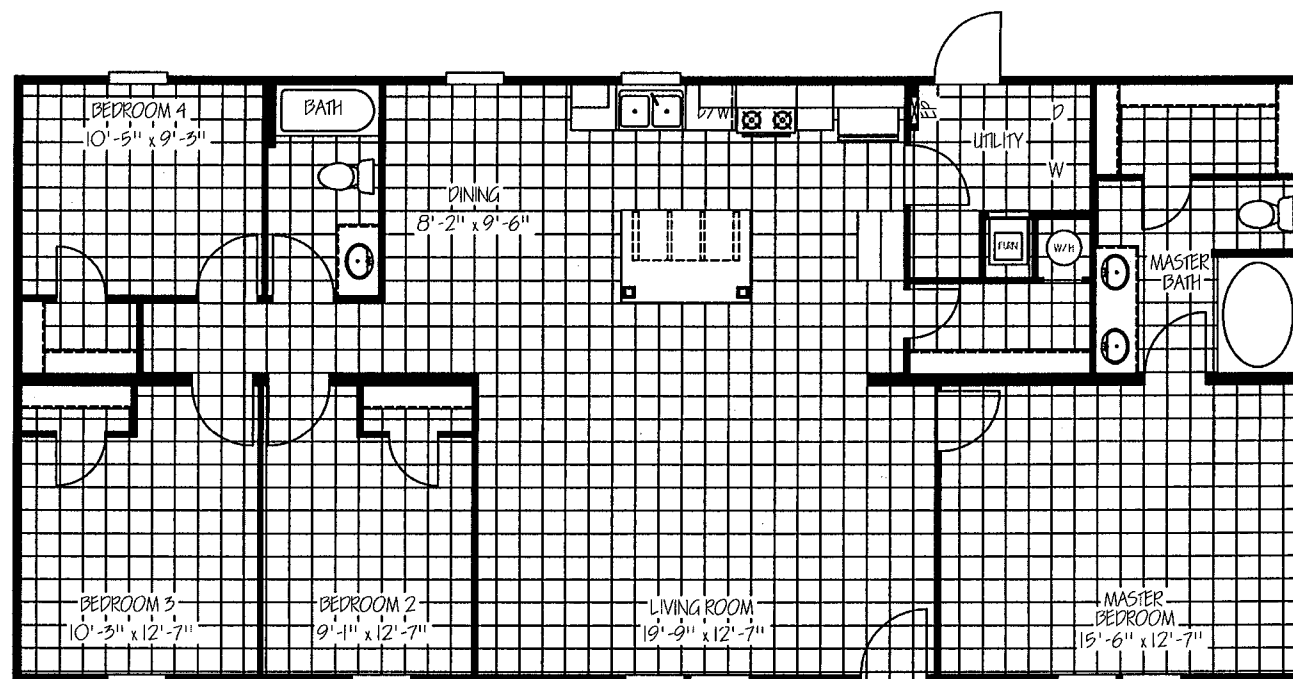





OPT. SHOWER



 JESSUP HOUSING 1001 WEST LOOP 340 WACO, TX 76712	Drawn By: a. jessup	
Model #: FAC28564A	28' x 56' THE PANAMA	
SALES LIT	Drawing #:	Date: 8/5/2024
	(02) 016	Scale: N/A

THE JESSUP DIFFERENCE

OTHER STANDARD FEATURES

ELITE & TITANIUM SERIES HOMES:

- China Lavs Throughout
- FG Tubs & Showers
- Elongated Toilets
- LED Can Lights
- Lino Throughout
- Entertainment Center
- Dishwasher
- Farmhouse Sink with Spring Loaded Faucet
- Low E Thermal Pane Windows
- Stainless Steel Appliance Pkg
- Ceiling Fan LR
- Residential Front Door
- Cottage Rear Door
- Plumbed for Ice-maker
- Lever Style Int Doorknobs
- DW: Upflow Air

BUILT ON
PRINCIPLE

FRAME

12" I Beam, 11.8 lbs per linear foot, vs 10 lbs. competitors. Boxed C-channel bracing and gussets between I-Beams at ALL outriggers. Full length outriggers extend to exterior sidewalls, all lagged to exterior wall. (Prevent floor crown and homes settlement over time.)

FLOOR JOIST

16" OC, Front and Rear SX Floor Joist Sandwiched for added strength. EVERY Floor Joist lagged to frame.

FLOOR DECKING

Exposure 1 OSB (same as site-built construction) Spaced for tolerance in travel. TRIPLE FASTENED: Tongue and Grooved Jointed, Glued, and Fastened. Sanded and checked for imperfections.

WALL FRAMING

2x4 Exterior Wall Studs 16" OC. 2x4 Top plate on all homes, Double if Z2 or 3. Double Header plates over all window and door jambs. 2x3 Interior Wall Studs vs the 1x3 placed at 24" used in competitors' homes. Our WZII and III sheer walls OSB lined.

RAFTER CONSTRUCTION

2x3 Bottom plate vs 2x2 competitors (Allows full insulation to the sidewalls). Full length Ridgeback Stiffener in rafters to control sway and provide stabilization in transport.

CABINETS

3/4 Hardwood Cabinet Doors Standard. Lined Cabs with Center Shelves in Kitchen

EXTERIOR

OSB Wrap and Tyvek wrapped, STANDARD ON ALL HOMES. Smart Panel also gets Tyvek. Window Seal installed on all windows and corners of ALL Homes.

INSULATION

100% Fiberglass Insulation Throughout. T22 33-13-22 Standard on Singles 38-13-22 Standard on Doubles. Energy Star Pkg Available*. Eco-Fill Ceiling Insulation & Eco-Bat Wall Insulation with noise dampening backer and fastened to the studs to prevent settling over time and during transport. (Allows for full insulation to roof edge and sidewall tops).

PLUMBING

Legend Plumbing Fittings - 30 Year Warranty. Whole Home water shutoffs at Wash Station, and water cut-off at each toilet.

ROOFING

CertainTeed 20-year shingle underlaid with Go-Guard plastic lined backing designed to provide a moisture tight seal.

WIDER BOX

51 SQ FT MORE than any of our competitors! Our singlewide width is 188" allowing for wider hallways & larger rooms in your home. This also allows for higher comp rates when compared to other manufacturers.

* Energy Star is now Std on all Core products (Except for WY & CO)