

# 16+/- SURVEYED ACRES in Copiah County, MS



**\$,5,350 PER ACRE**

Take a look at this 16+/- acre property nestled in the Stronghope Community of Copiah County, MS. Offering an array of possibilities, this property is perfect for recreational enjoyment or building your dream home. The small pond offers a great place to build or just do a little fishing while valuable timber resources and convenient road frontage along Monticello Road, this fantastic property ensures accessibility and natural beauty. Situated within the Wesson School District, this is a place to build a home and embrace rural living at its finest. Call Clif to schedule your private showing today!

Directions from the intersection of Sylvaarena Road and I-55 in Wesson, MS: Take Exit 51 (Sylvaarena Rd) and travel east on Sylvaarena Road for 1.5 miles. Turn left onto Lowery Road and travel 1.7 miles. Turn right onto Hwy 51 and travel .2 miles. Turn left onto Bahala Road and travel .4 miles. Turn left onto Beauregard Road and travel 9.8 miles. Turn left onto Monticello Road and travel for .9 miles. Turn left to remain on Monticello Road and travel 1 miles The properties will be on both sides of the road.

[GOOGLE MAP LINK](#)



**CLIF  
CANNON**  
REALTOR®

Office: 601.990.5070

Cell: 601.565.1070

[Clif@TomSmithLand.com](mailto:Clif@TomSmithLand.com)

**A Real Estate Expert You Can Trust**

[TomSmithLandandHomes.com](http://TomSmithLandandHomes.com)

Information is believed to be accurate but not guaranteed.







# CLIF CANNON

REALTOR®

Office: 601.990.5070

Cell: 601.565.1070

Clif@TomSmithLand.com



A Real Estate Expert You Can Trust

TomSmithLandandHomes.com

Information is believed to be accurate but not guaranteed.





# Aerial Map

Interactive Map

31.7320, -90.2650



MONTICELLO RD

16+/- ACRES

LOT #5

**CLIF CANNON**

REALTOR®

Office: 601.990.5070

Cell: 601.565.1070

Clif@TomSmithLand.com



A Real Estate Expert You Can Trust

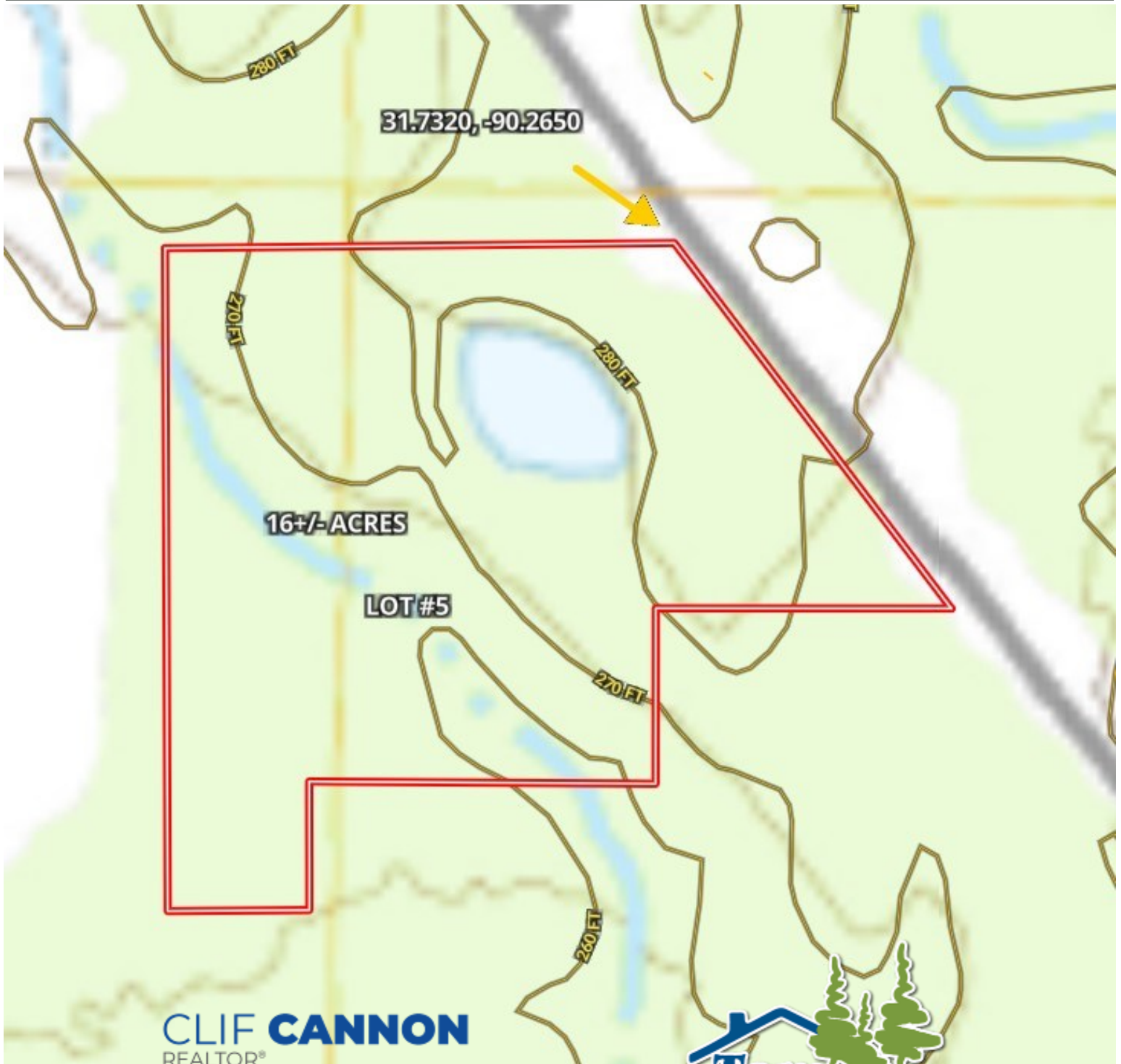
TomSmithLandandHomes.com

Information is believed to be accurate but not guaranteed.





# Topographic Map



**CLIF CANNON**  
REALTOR®

Office: 601.990.5070  
Cell: 601.565.1070  
Clif@TomSmithLand.com

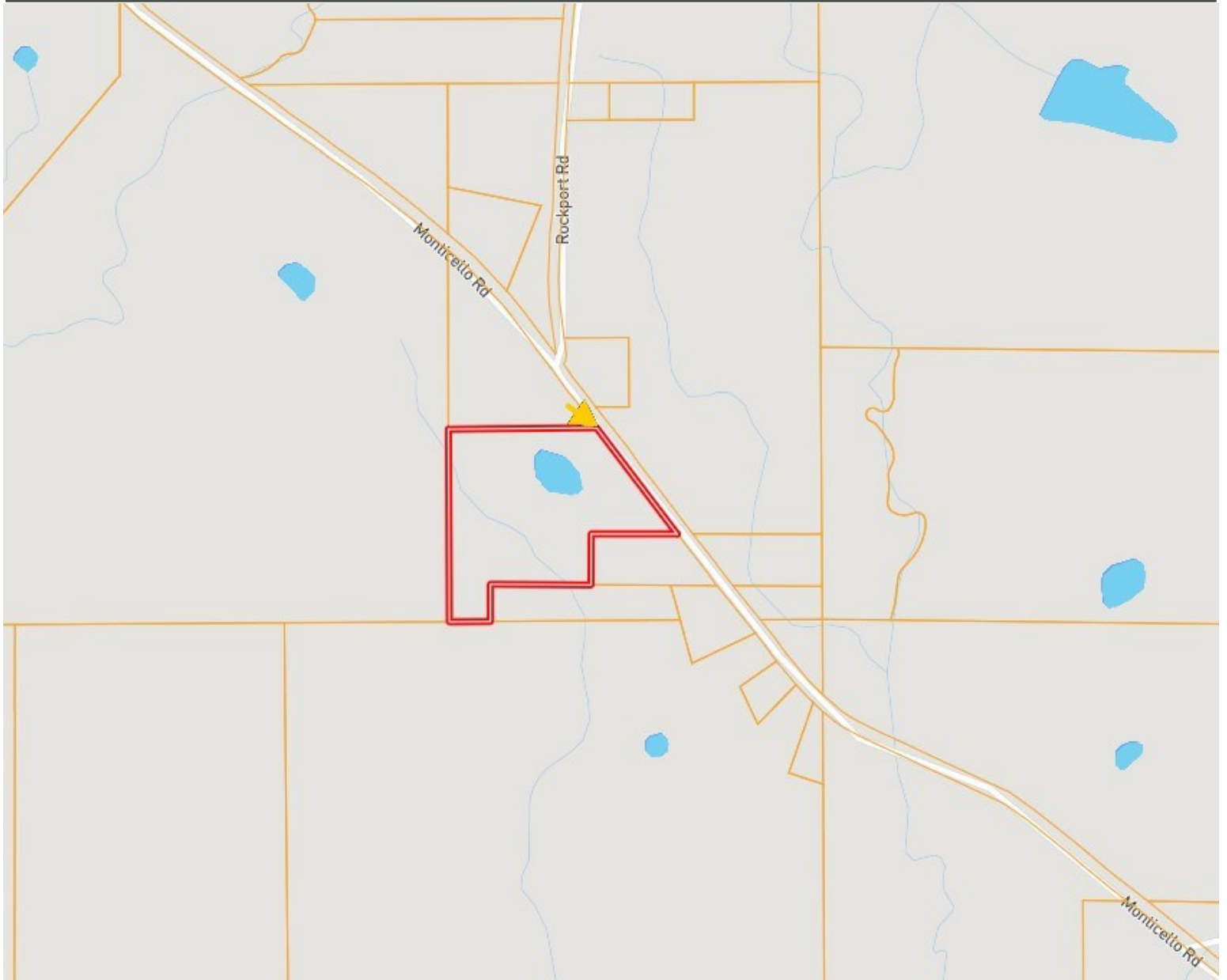


**A Real Estate Expert You Can Trust**  
TomSmithLandandHomes.com

Information is believed to be accurate but not guaranteed.



# Ownership Map



**CLIF CANNON**

REALTOR®

Office: 601.990.5070

Cell: 601.565.1070

Clif@TomSmithLand.com



**A Real Estate Expert You Can Trust**

TomSmithLandandHomes.com

Information is believed to be accurate but not guaranteed.





# Flood Map



**CLIF CANNON**

REALTOR®

Office: 601.990.5070

Cell: 601.565.1070

Clif@TomSmithLand.com



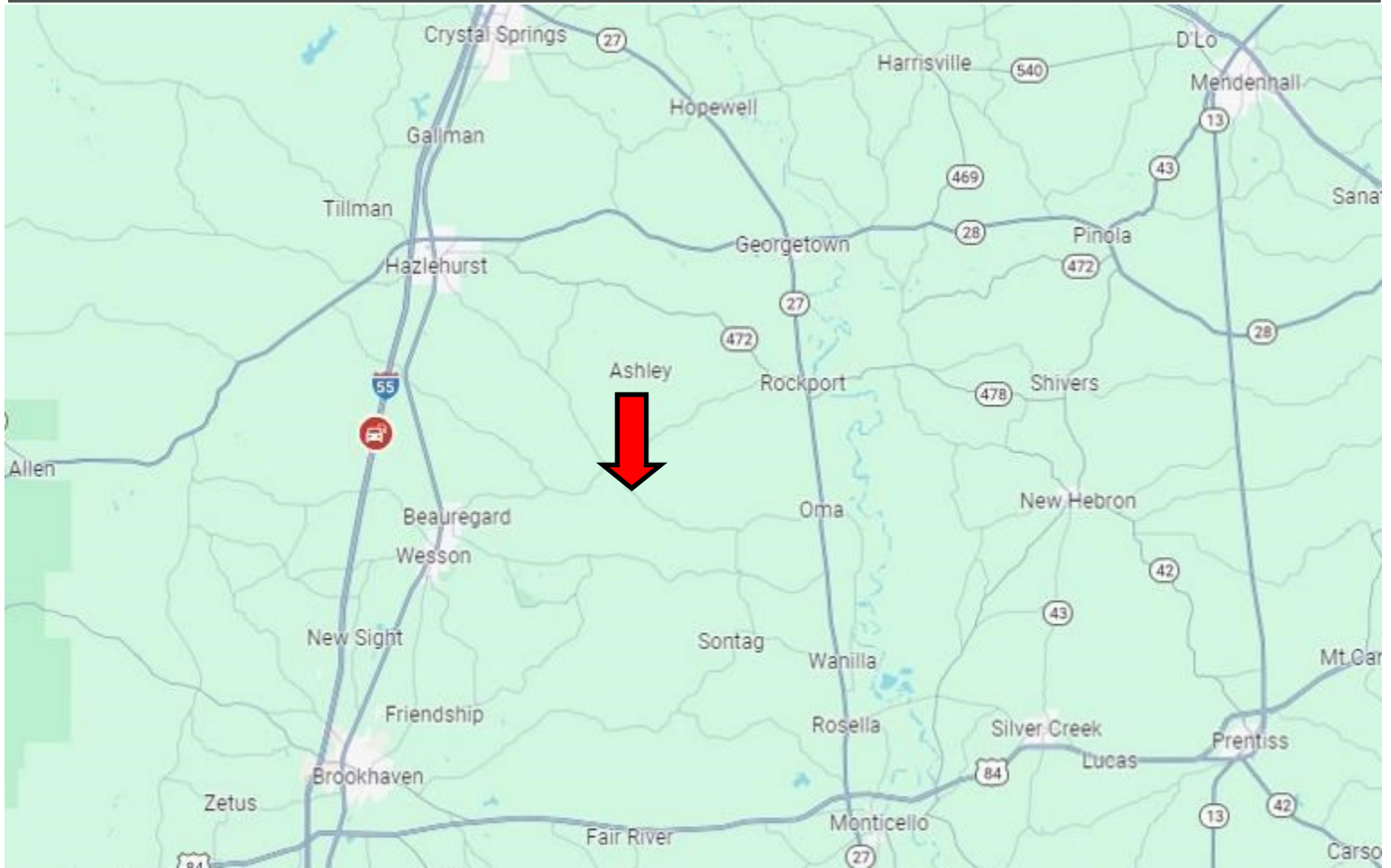
**A Real Estate Expert You Can Trust**

TomSmithLandandHomes.com

Information is believed to be accurate but not guaranteed.



# Directional Map



Directions from the intersection of Sylvaena Road and I-55 in Wesson, MS: Take Exit 51 (Sylvaena Rd) and travel east on Sylvaena Road for 1.5 miles. Turn left onto Lowery Road and travel 1.7 miles. Turn right onto Hwy 51 and travel .2 miles. Turn left onto Bahala Road and travel .4 miles. Turn left onto Beaugard Road and travel 9.8 miles. Turn left onto Monticello Road and travel for .9 miles. Turn left to remain on Monticello Road and travel 1 miles The properties will be on both sides of the road.

[GOOGLE MAP LINK](#)



**CLIF  
CANNON**  
REALTOR®

Office: 601.990.5070

Cell: 601.565.1070

Clif@TomSmithLand.com



**A Real Estate Expert You Can Trust**

TomSmithLandandHomes.com

Information is believed to be accurate but not guaranteed.

