



Honor Hill Farms

373+/- ACRE EQUESTRIAN PARADISE
IN PEARL RIVER COUNTY, MS



[Drone Link](#)

\$7,750,000

A World Class Equestrian Estate

FEATURES



MAIN LODGE

4 Bedroom, 3 Bath, 4,680 SF Home That Overlooks the Lake, and also Offers Stunning Views of the Property



BARN

14-Stall with Rubberized Floors, Dressing Room, Vet Room, Office, Laundry, Tack and Feed Rooms



SALOON

5 Bedrooms, 6,233 SF with a 40 ft. Custom Bar



CASTLE RETREAT

2,010 SF Open Floor Plan Guest House with King Beds and Over Sized Bathroom



GUEST COTTAGE

1 Bedroom, 1 Bath with Kitchenette and Winding Staircase



GARAGE

3,621 SF with Plenty of Storage for Cars, Toys, and Boats



Call the land man today!

TOM SMITH, ALC®, BROKER

Tom@TomSmithLand.com

601.898.2772 office | 601.454.9397 cell



Expect More. Get More.



TomSmithLandandHomes.com

Information is believed to be accurate but not guaranteed.



HONOR HILL WEBSITE



This 373+/- acre Equestrian paradise in Poplarville, Mississippi, is the most breathtaking place imaginable. Upon entering the Honor Hill Farms gates, it is immediately apparent that you have arrived at one of the country's most prestigious estates. Honor Hill, home to award-winning thoroughbreds, sets the standard in the Hunter/Jumper arena of the present day. There is nothing of subpar quality at Honor Hill Farms. The main horse barn features 14 stalls, all rubberized floors and bathroom walls, an air-conditioned lounge and dressing room, a vet room, an office, a full laundry room, tack and feed rooms, and a 900-square-foot covered porch. You may continue your tour of the main complex down the winding asphalt street lined with Priefert fencing throughout the entire property. This custom-built barn is composed entirely of tongue-and-groove using the highest-quality materials available. Next, you will cross over the dam of the 14-acre lake managed by Southeastern Pond Management and stocked with trophy bass and bream. Once you reach the primary residence, you will be awed by the 4,680 square foot, two-story, four-bedroom, three-bathroom, custom-built home that overlooks the lake and delivers breathtaking views of the entire property. Now that you've taken in the awe-inspiring beauty and quality of the location thus far, it's time to appreciate Honor Hill truly!

Call the land man today!

TOM SMITH, ALC[®], BROKER

Tom@TomSmithLand.com

601.898.2772 **office** | 601.454.9397 **cell**



Expect More. Get More.



TomSmithLandandHomes.com

Information is believed to be accurate but not guaranteed.

The children's playground and the fully enclosed 38'x18' swimming pool are near the parking area. The 3,621-square-foot garage for your cars, toys, and boats is adjacent to the swimming pool! There are two floors and ample space! You have a 576-square-foot, professional-grade kitchen for entertaining, complete with all freezers, coolers, ovens, fryers, and cooktops (all commercial grade). Welcome to your very own saloon when you are ready to unwind and enjoy a beverage of your choosing. The beauty and craftsmanship of this facility, which features a 40-foot bar, will leave you speechless. This facility has five bedrooms and 6,233 square feet of rustic beauty and world-class construction. At Honor Hill Farms, there are six large-screen televisions and gathering areas where you can enjoy fellowship or watch your favorite sporting event.



Call the land man today!

TOM SMITH, ALC[®], BROKER
 Tom@TomSmithLand.com

601.898.2772 **office** | 601.454.9397 **cell**



Expect More. Get More.

TomSmithLandandHomes.com

Information is believed to be accurate but not guaranteed.



Behind the main residence is a Girls' House for your guests' enjoyment. It has four king-size beds and a magnificent bathroom with a four-person custom shower. This venue is ideal for your guests, a girls' night out, and special events such as wedding receptions, etc.!

After settling in, you may wish to engage in a little physical activity. Not a worry here! Just enter your very own 1,500-square-foot fitness center, complete with free weights, machines, ellipticals, treadmills, mirrors, and more! The fitness center doubles as a game room with billiards, foosball, shuffleboard, air hockey, etc. In addition, this building has an actual jail cell that serves as a gun room or storage space for your valuables! It is an impressive sight! Across from the Saloon is the 2,560 square-foot Saloon Equine Barn, which has four rubberized stalls, tack, hay, feed storage, and a large grooming area. In addition, two loafing sheds and a 200-by-200-foot lighted arena for barrels and jumping are located behind this barn. And for everyone, across from the barn is a 576-square-foot restroom building with fun-to-enter men's and women's facilities.



HELICOPTER LANDING PAD



ROUND PEN WITH EUROPEAN ROBOTIC HOT WALKER

Call the land man today!



TOM SMITH, ALC[®], BROKER
 Tom@TomSmithLand.com
 601.898.2772 office | 601.454.9397 cell



TomSmithLandandHomes.com

Information is believed to be accurate but not guaranteed.

The third equine barn, measuring 1,568 square feet with four stalls and a storage area, is located further down the main street. The dog kennels and run (432 square feet) and the chicken coop are close to this barn.

Once you reach the end of the main street, you'll find two 1,500-square-foot workshops containing all the tools and equipment necessary to maintain Honor Hill Ranch.

There are 117+/- acres of beautiful pine saw timber and hardwood bottoms that provide excellent habitat for whitetail deer and turkey for outdoor enthusiasts. In addition, there is a good network of internal roads throughout the woods, allowing you to hunt in different areas based on wind and weather conditions!



Call the land man today!

TOM SMITH, ALC[®], BROKER
Tom@TomSmithLand.com

601.898.2772 **office** | 601.454.9397 **cell**



Expect More. Get More.

TomSmithLandandHomes.com

Information is believed to be accurate but not guaranteed.



Honor Hill Farms is distinct from any other Equestrian Estate property in the nation. It is constructed and maintained with precision and the highest quality available craftsmanship. I challenge you to locate a farm comparable to Honor Hill Farms. Please call me, Tom Smith, to schedule a private tour of this world-class property. Please be advised that all prospective purchasers must submit a letter of preapproval or proof of ability to perform before any scheduled showings. I anticipate our meeting at Honor Hill Farms.



Call the land man today!

TOM SMITH, ALC[®], BROKER
Tom@TomSmithLand.com

601.898.2772 office | 601.454.9397 cell



Expect More. Get More.

TomSmithLandandHomes.com

Information is believed to be accurate but not guaranteed.



MAIN HOUSE



Call the land man today!



TOM SMITH, ALC[®], BROKER
 Tom@TomSmithLand.com
 601.898.2772 office | 601.454.9397 cell



TomSmithLandandHomes.com

Information is believed to be accurate but not guaranteed.



Call the land man today!



TOM SMITH, ALC®, BROKER
Tom@TomSmithLand.com
601.898.2772 office | 601.454.9397 cell



TomSmithLandandHomes.com

Information is believed to be accurate but not guaranteed.



Call the land man today!

TOM SMITH, ALC®, BROKER
Tom@TomSmithLand.com

601.898.2772 office | 601.454.9397 cell



Expect More. Get More.



TomSmithLandandHomes.com

Information is believed to be accurate but not guaranteed.



SHOOTING RANGE



Call the land man today!



TOM SMITH, ALC[®], BROKER
 Tom@TomSmithLand.com
 601.898.2772 office | 601.454.9397 cell



TomSmithLandandHomes.com

Information is believed to be accurate but not guaranteed.



SALOON



Call the land man today!

TOM SMITH, ALC[®], BROKER
 Tom@TomSmithLand.com

601.898.2772 office | 601.454.9397 cell



Expect More. Get More.



TomSmithLandandHomes.com

Information is believed to be accurate but not guaranteed.



Call the land man today!



TOM SMITH, ALC[®], BROKER
Tom@TomSmithLand.com
601.898.2772 office | 601.454.9397 cell



TomSmithLandandHomes.com

Information is believed to be accurate but not guaranteed.



Call the land man today!



TOM SMITH, ALC[®], BROKER
Tom@TomSmithLand.com
601.898.2772 office | 601.454.9397 cell



TomSmithLandandHomes.com

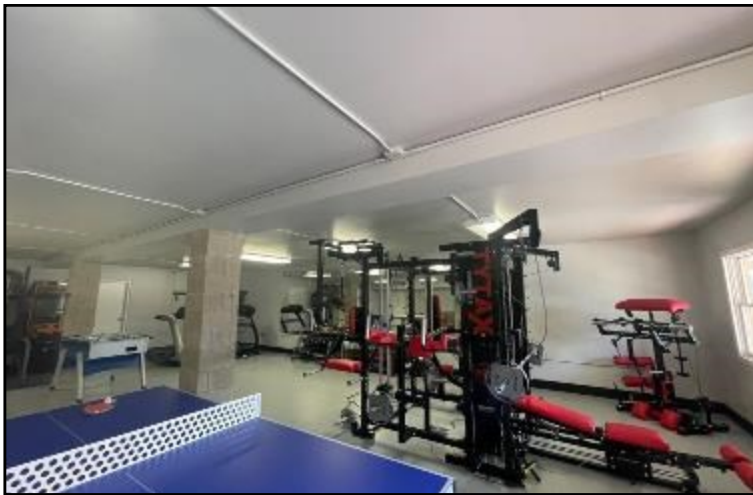
Information is believed to be accurate but not guaranteed.



SALOON KITCHEN



GYM/REC ROOM



Call the land man today!



TOM SMITH, ALC[®], BROKER
Tom@TomSmithLand.com
601.898.2772 office | 601.454.9397 cell



TomSmithLandandHomes.com

Information is believed to be accurate but not guaranteed.



CASTLE RETREAT



Call the land man today!



TOM SMITH, ALC[®], BROKER
 Tom@TomSmithLand.com

601.898.2772 office | 601.454.9397 cell



Expect More. Get More.

TomSmithLandandHomes.com

Information is believed to be accurate but not guaranteed.



MAIN BARN



Call the land man today!

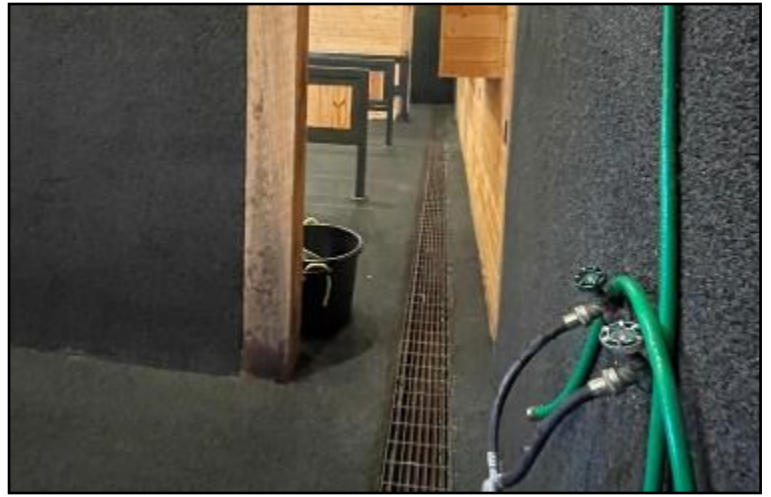


TOM SMITH, ALC[®], BROKER
Tom@TomSmithLand.com
601.898.2772 office | 601.454.9397 cell



TomSmithLandandHomes.com

Information is believed to be accurate but not guaranteed.



Call the land man today!



TOM SMITH, ALC®, BROKER
Tom@TomSmithLand.com
601.898.2772 office | 601.454.9397 cell



TomSmithLandandHomes.com

Information is believed to be accurate but not guaranteed.



GUEST COTTAGE



Call the land man today!



TOM SMITH, ALC[®], BROKER
Tom@TomSmithLand.com
601.898.2772 **office** | 601.454.9397 **cell**



TomSmithLandandHomes.com

Information is believed to be accurate but not guaranteed.



Call the land man today!

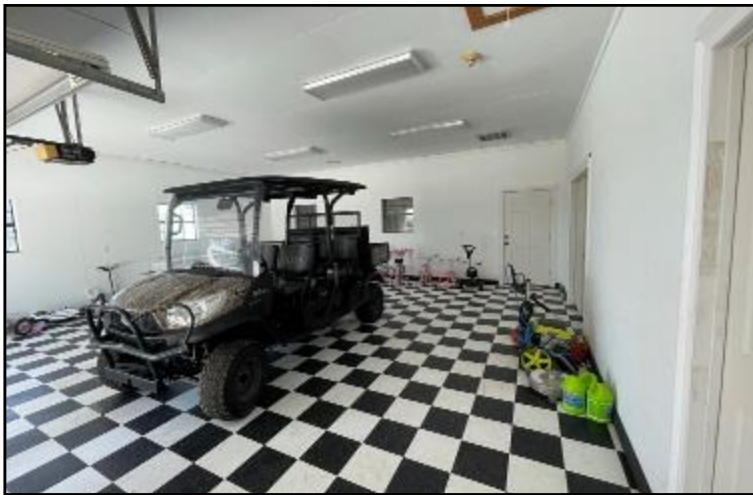


TOM SMITH, ALC[®], BROKER
Tom@TomSmithLand.com
601.898.2772 office | 601.454.9397 cell



TomSmithLandandHomes.com

Information is believed to be accurate but not guaranteed.



TRUCK AND RV NOT INCLUDED IN SALE

Call the land man today!



TOM SMITH, ALC[®], BROKER

Tom@TomSmithLand.com

601.898.2772 office | 601.454.9397 cell



Expect More. Get More.

TomSmithLandandHomes.com

Information is believed to be accurate but not guaranteed.



Call the land man today!



TOM SMITH, ALC[®], BROKER
Tom@TomSmithLand.com
601.898.2772 office | 601.454.9397 cell



TomSmithLandandHomes.com

Information is believed to be accurate but not guaranteed.



Call the land man today!



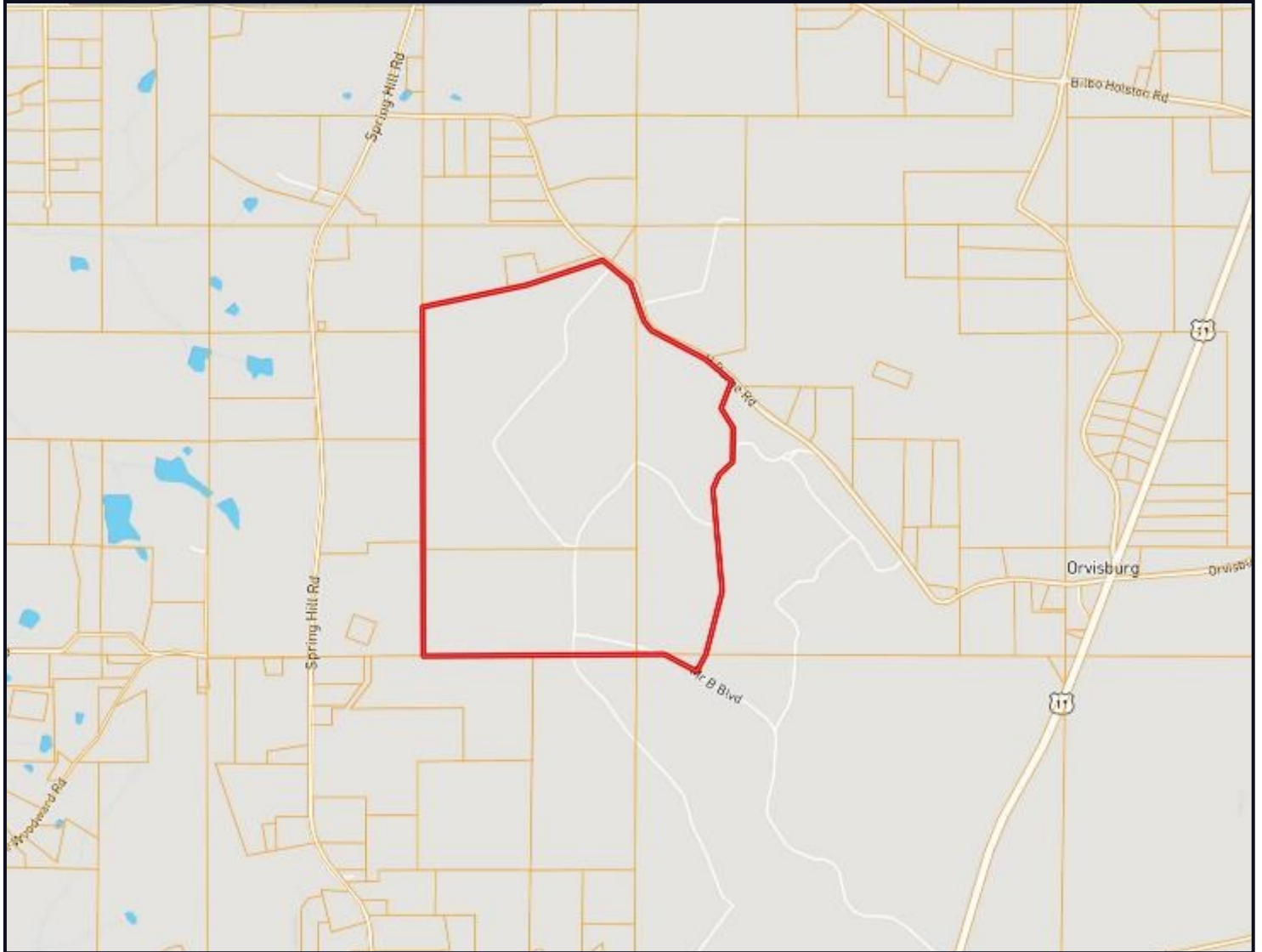
TOM SMITH, ALC[®], BROKER
Tom@TomSmithLand.com
601.898.2772 office | 601.454.9397 cell



TomSmithLandandHomes.com

Information is believed to be accurate but not guaranteed.

OWNERSHIP MAP



Call the land man today!

TOM SMITH, ALC[®], BROKER
Tom@TomSmithLand.com

601.898.2772 office | 601.454.9397 cell



Expect More. Get More.



TomSmithLandandHomes.com

Information is believed to be accurate but not guaranteed.

AERIAL MAP



[CLICK HERE FOR AN INTERACTIVE MAP](#)

Call the land man today!

TOM SMITH, ALC®, BROKER

Tom@TomSmithLand.com

601.898.2772 office | 601.454.9397 cell



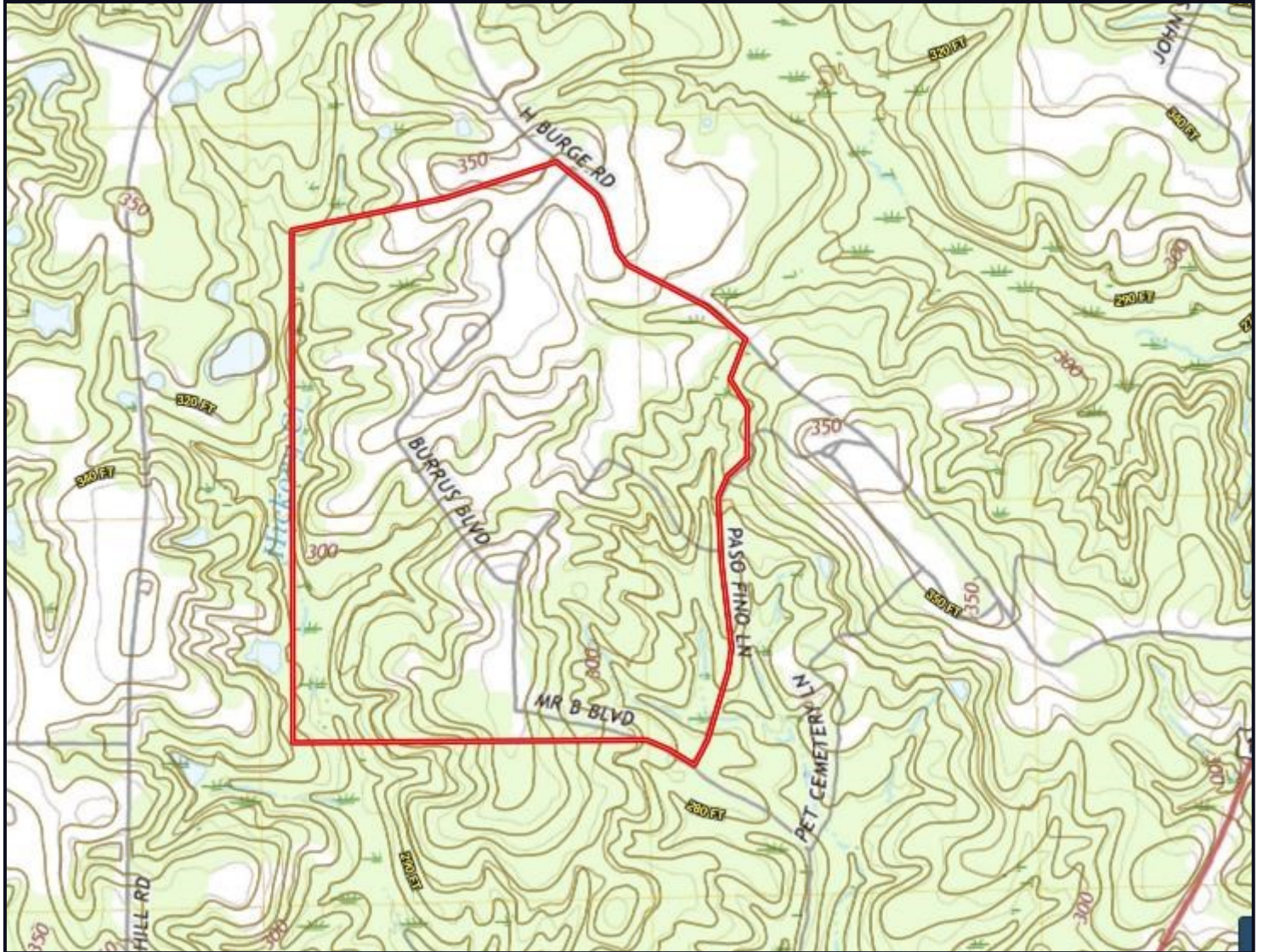
Expect More. Get More.



TomSmithLandandHomes.com

Information is believed to be accurate but not guaranteed.

TOPO MAP



Call the land man today!

TOM SMITH, ALC[®], BROKER

Tom@TomSmithLand.com

601.898.2772 office | 601.454.9397 cell



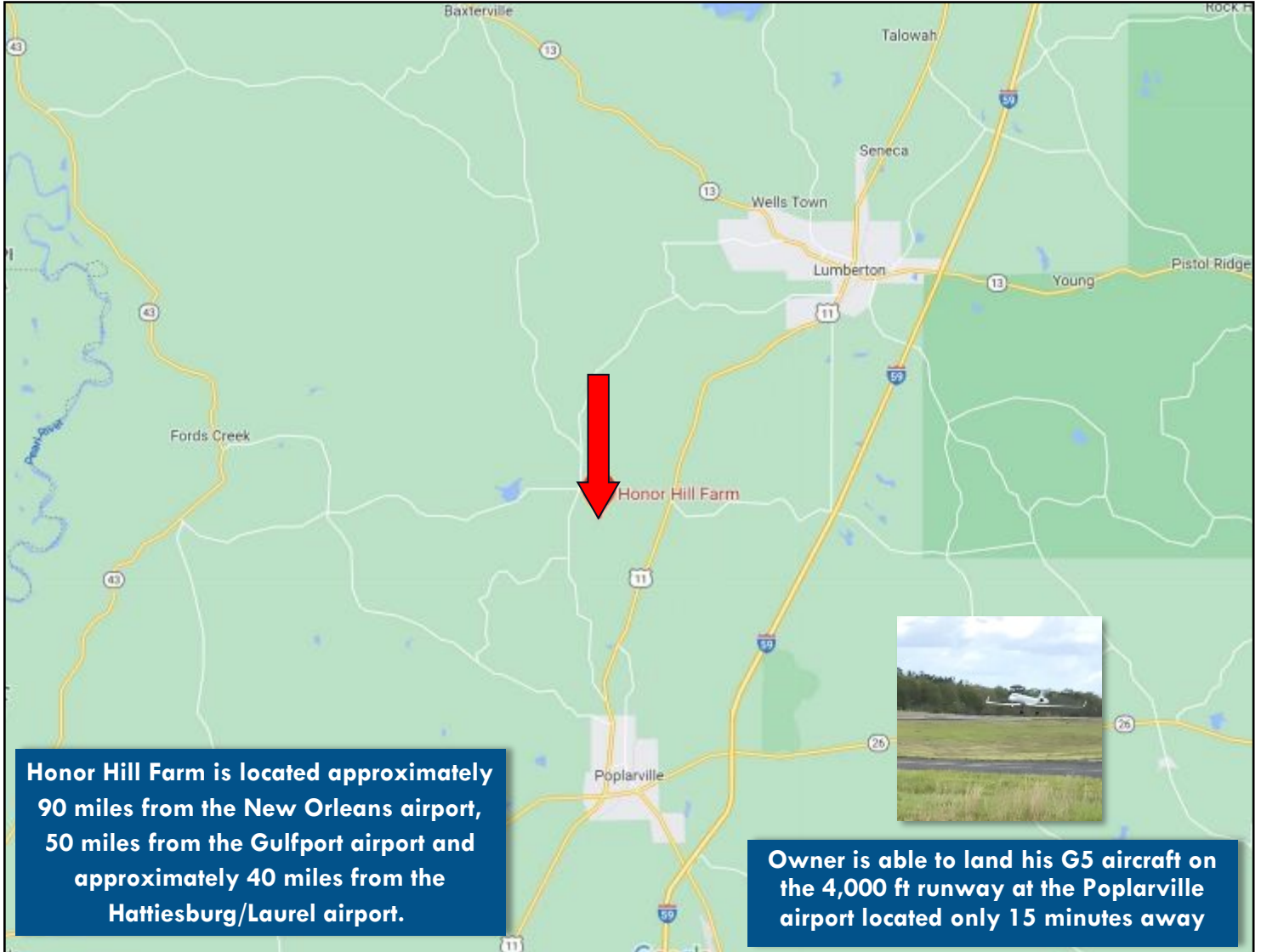
Expect More. Get More.



TomSmithLandandHomes.com

Information is believed to be accurate but not guaranteed.

DIRECTIONAL MAP



Honor Hill Farm is located approximately 90 miles from the New Orleans airport, 50 miles from the Gulfport airport and approximately 40 miles from the Hattiesburg/Laurel airport.

Owner is able to land his G5 aircraft on the 4,000 ft runway at the Poplarville airport located only 15 minutes away

Directions from the Intersection of Hwy 11 and I-59 Hattiesburg, MS: Take I-59 South to Hillsdale exit. Go right. Travel approximately 7 miles to Hwy 11. Turn left onto Hwy 11 headed South. Go approximately 1 mile to H. Burge Rd. on your right. Travel 3 miles to 172 Southfork Dr. [GOOGLE MAP LINK](#)



Call the land man today!

TOM SMITH, ALC[®], BROKER
Tom@TomSmithLand.com
601.898.2772 office | 601.454.9397 cell



TomSmithLandandHomes.com

Information is believed to be accurate but not guaranteed.