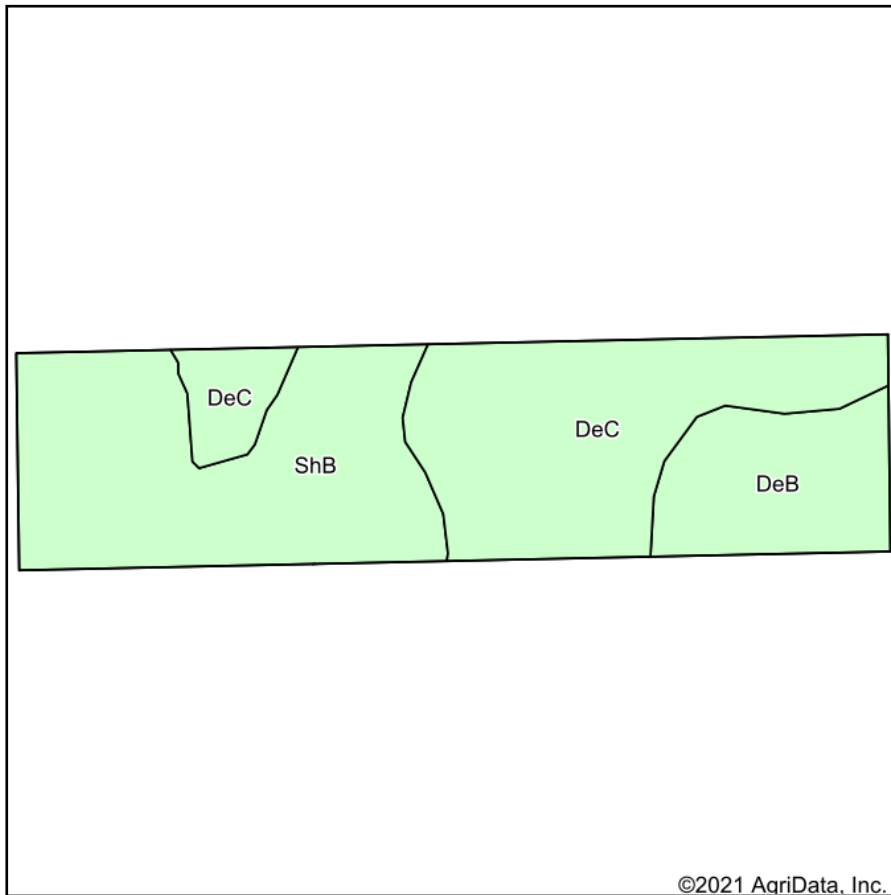
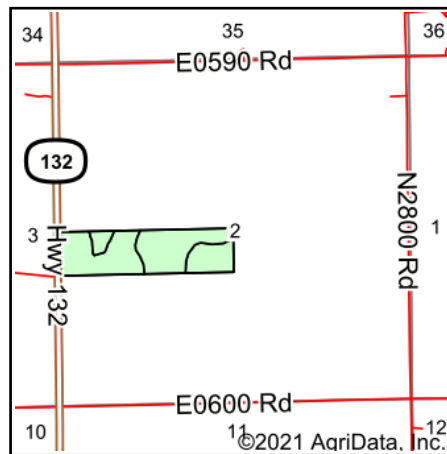


Soils Map



Soils data provided by USDA and NRCS.

©2021 AgriData, Inc.



State: **Oklahoma**
 County: **Kingfisher**
 Location: **2-19N-8W**
 Township: **Hennessey**
 Acres: **40.13**
 Date: **11/29/2021**



Maps Provided By:



© AgriData, Inc. 2021

www.AgriDataInc.com



Area Symbol: OK073, Soil Area Version: 17

| Code | Soil Description | Acres | Percent of field | Non-Irr Class *c | Range Production (lbs/acre/yr) | Alfalfa hay Tons | Cotton lint Lbs | Grain sorghum Bu | Improved bermudagrass AUM | Introduced bluestem AUM | Peanuts Lbs | Rye Bu | Soybeans Bu | Weeping lovegrass AUM | Wheat Bu | |
|-------------------------|--|-------|------------------|------------------|--------------------------------|------------------|-----------------|------------------|---------------------------|-------------------------|-------------|--------------|-------------|-----------------------|----------|------------|
| ShB | Lovedale fine sandy loam, 1 to 3 percent slopes | 16.65 | 41.5% | Ile | 3250 | 3 | | 42 | | 6 | 5 | | | | 6 | 2 |
| DeC | Dougherty-Eufaula complex, 3 to 8 percent slopes | 16.50 | 41.1% | IVe | 3995 | | 148 | 23 | | 4 | | 945 | 12 | 1 | 4 | 1 |
| DeB | Dougherty-Eufaula complex, 0 to 3 percent slopes | 6.98 | 17.4% | IIle | 3950 | | 165 | 26 | | 4 | | 990 | 2 | | 5 | 1 |
| Weighted Average | | | | 3.00 | 3678.1 | 1.2 | 89.6 | 31.4 | | 4.8 | 2.1 | 560.7 | 5.3 | 0.4 | 5 | 19. |

*n: The aggregation method is "Weighted Average using all components"

*c: Using Capabilities Class Dominant Condition Aggregation Method

Soils data provided by USDA and NRCS.