

**New Construction Subdivision Home in Poplar Bluff, Mo  
for sale**  
217 Gucci Drive  
Poplar Bluff, MO 63901

**\$229,900**  
0.200± Acres  
Butler County



**New Construction Subdivision Home in Poplar Bluff, Mo for sale  
Poplar Bluff, MO / Butler County**

**SUMMARY**

**Address**

217 Gucci Drive

**City, State Zip**

Poplar Bluff, MO 63901

**County**

Butler County

**Type**

Residential Property

**Latitude / Longitude**

36.763938 / -90.4638

**Dwelling Square Feet**

1400

**Bedrooms / Bathrooms**

3 / 2

**Acreage**

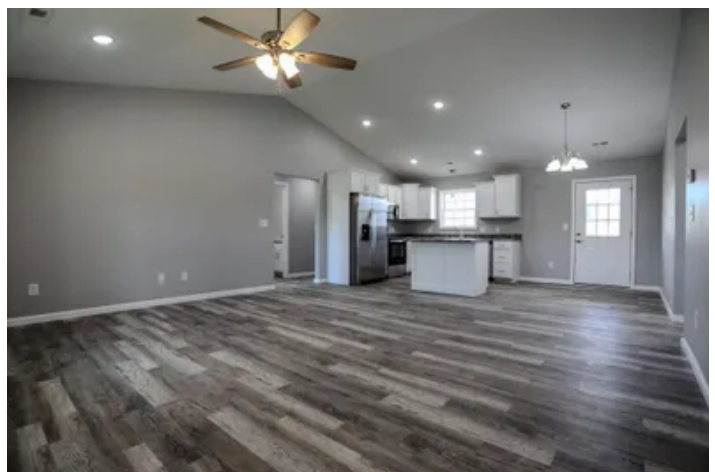
0.200

**Price**

\$229,900

**Property Website**

<https://www.mossoakproperties.com/property/new-construction-subdivision-home-in-poplar-bluff-mo-for-sale-butler-missouri/111024/>



## **New Construction Subdivision Home in Poplar Bluff, Mo for sale Poplar Bluff, MO / Butler County**

---

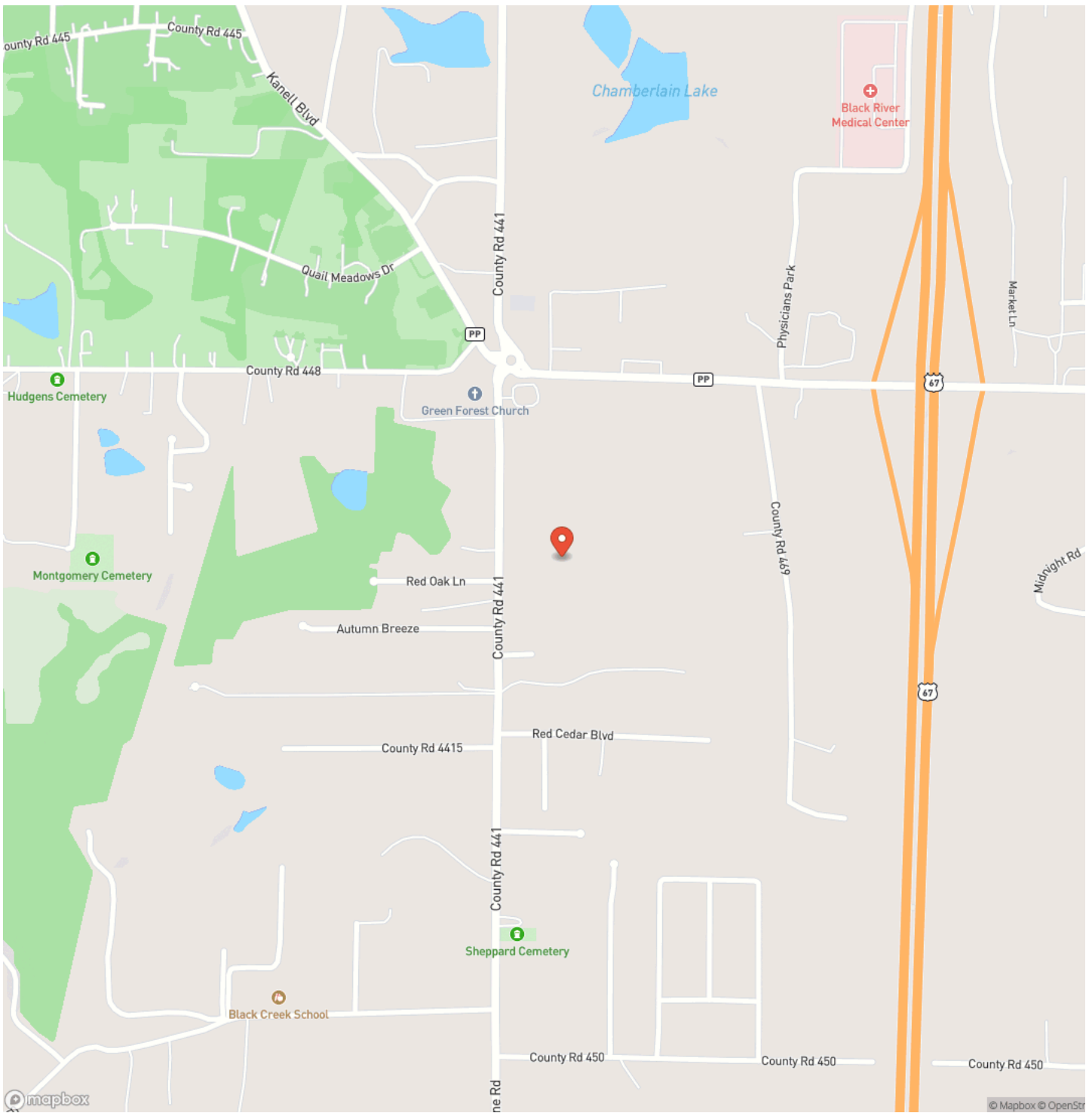
### **PROPERTY DESCRIPTION**

Welcome to 217 Gucci Lane, a brand-new construction home located in a Western Butler County development just south of the Township Line Road roundabout. Designed for ultimate low-maintenance living, this all-electric, single-level ranch home features a low maintenance vinyl exterior accented with stone work, an attached two-car garage, and a completely level yard. Inside, the open-concept floor plan is highlighted by vaulted ceilings and durable, contemporary solid surface flooring that runs throughout the entire home. The open layout connects the main living space to a modern kitchen that comes fully equipped with a complete package of brand-new stainless steel appliances. This home will qualify for most all gov't loans. The highly desirable split-bedroom design ensures maximum privacy for the primary suite, which serves as a retreat with its spacious walk-in closet and an ensuite bath featuring a custom tiled shower and dual-sink vanity. With everything completely brand new and situated just minutes from Poplar Bluff's schools, shopping, and medical facilities, this home is entirely turn-key and ready for its very first owner.

New Construction Subdivision Home in Poplar Bluff, Mo for sale  
Poplar Bluff, MO / Butler County

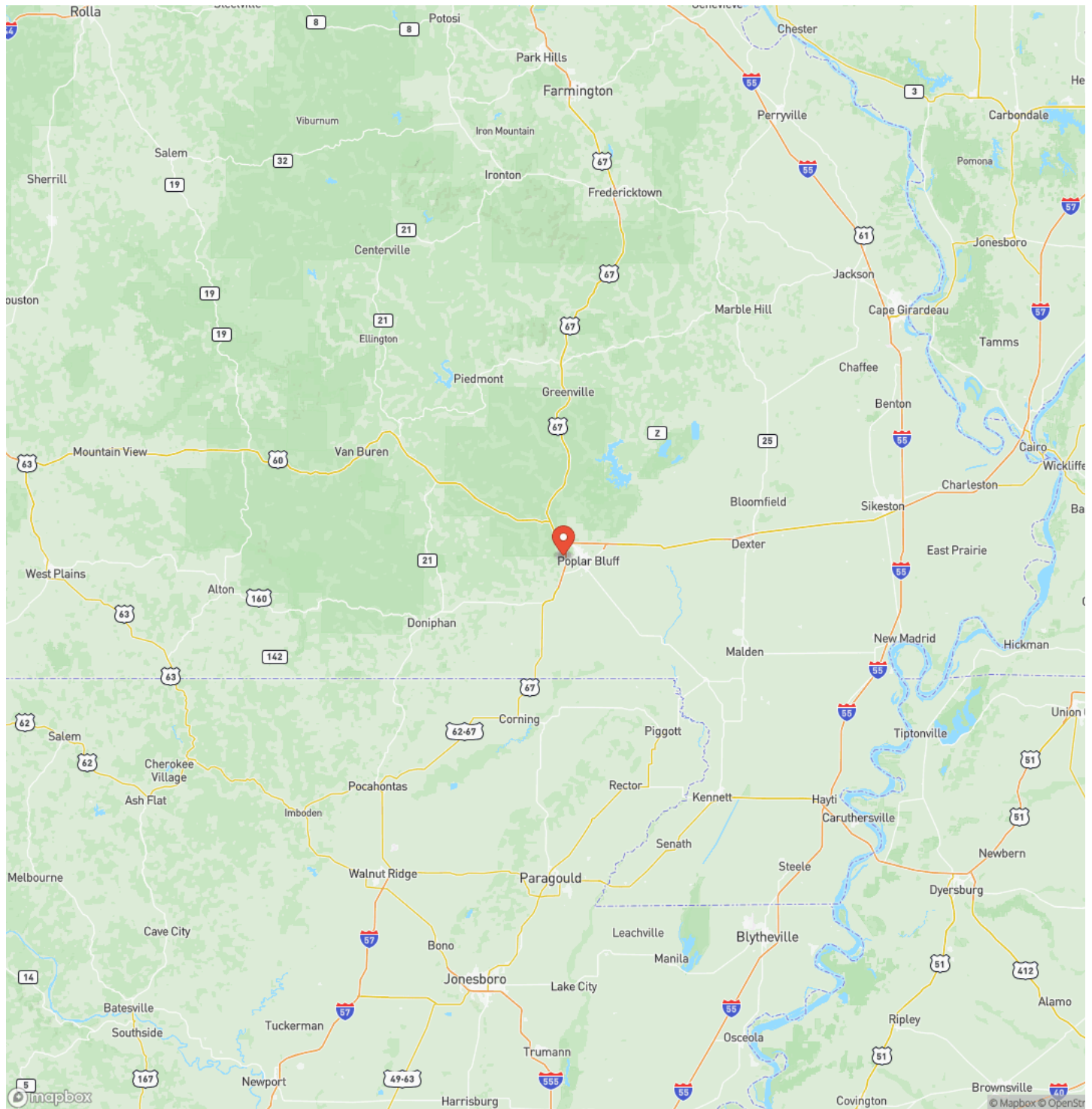


## Locator Map



New Construction Subdivision Home in Poplar Bluff, Mo for sale  
Poplar Bluff, MO / Butler County

# Locator Map









## **DISCLAIMERS**

Information in this brochure is provided solely for information purposes and does not constitute an offer to sell or advertise real estate outside the states in which broker or agent licensed. The information presented has been obtained from sources deemed to be reliable, but is not guaranteed or warranted by the agent, broker, or the sellers of these properties. This offering is subject to errors, omissions, prior sale, price change, correction or withdrawal from the market without notice. All references to age, square footage, income, expenses, acreage, carrying capacity, and land classification, etc. are approximate. Prospective buyers are chargeable with and expected to conduct their own independent investigation of the information and the property and to rely only on those results. Sellers reserve the right to accept or reject any and all offers without liability to any buyer or cooperating broker.

Maps are provided for illustration purposes only, the accuracy is not warranted. Parcels on interactive maps are not adjusted to match aerial backgrounds. This information is for reference purposes only and is not a legal document. Data maps contain errors. The seller and seller's agent are making known to all potential buyers that there may be variations between the location of the existing fence lines and the legal description of the deeded property. Seller and seller's agent make no warranties with regard to the location of the fence lines in relationship to the deeded property lines, nor does the Seller make any warranties or representations with regard to the specific acreage contained within the fenced property lines. Seller is selling the property in an "as is" condition, which includes the location of the fences as they exist. Boundaries shown on the accompanying maps are approximate, based on county parcel data. The maps are not to scale. The accuracy of the maps is not guaranteed. Prospective buyers are encouraged to verify fence lines, deeded property lines and acreages using a licensed surveyor at their own expense.

---

**Mossy Oak Properties Mozark Realty**  
947 N. Westwood Blvd.  
Poplar Bluff, MO 63901  
(573) 712-2252  
<https://mossyoakproperties.com/>

---