

Turner County, SD 61 Acres
TBD
Bridgewater, SD 57319

\$530,000
61± Acres
McCook County



**Turner County, SD 61 Acres
Bridgewater, SD / McCook County**

SUMMARY

Address

TBD null

City, State Zip

Bridgewater, SD 57319

County

McCook County

Type

Farms, Undeveloped Land

Latitude / Longitude

43.494127 / -97.381173

Taxes (Annually)

\$2,521

Acreage

61

Price

\$530,000

Property Website

<https://talltinesproperties.com/property/turner-county-sd-61-acres-/mccook/south-dakota/110760/>



Turner County, SD 61 Acres Bridgewater, SD / McCook County

PROPERTY DESCRIPTION

Discover a versatile 61+/- acre offering on the edge of Dolton, South Dakota, where productive Turner County cropland meets long-term development potential. This well-located tract includes approximately 60.94 mapped acres and carries a strong 79.66 CPI, supported by highly productive Clarno-Bonilla and Clarno-Crossplain-Davison soils. With level to gently rolling topography and established agricultural use, the property is well suited for continued crop production, while its position along the edge of town creates added appeal for future residential, acreage, or community growth opportunities.

Access is a major strength of this property. The tract sits adjacent to Dolton with convenient frontage and approach options, making it easy to reach equipment, inspect fields, or plan future improvements. The location places the property approximately 7 miles northwest of Marion and 6.5 miles southeast of Bridgewater, offering a practical rural setting with nearby small-town amenities and quick regional connectivity.

For farmers, investors, developers, or buyers seeking a land holding with multiple paths forward, this Turner County tract deserves attention. It offers the income potential of quality cropland today, along with the strategic location and access that can support future development possibilities. With nearly all acres in cropland and a convenient setting near existing roads and town infrastructure, the property provides both usability and upside. Opportunities to own productive acres on the edge of a South Dakota community are limited, and this 61+/- acre property near Dolton brings together location, soil quality, access, and flexibility in one attractive package now

Features

- 61+/- acres of productive Turner County cropland on the edge of Dolton, South Dakota.
- Strong 79.66 CPI with approximately 60.94 mapped acres.
- Excellent access with convenient proximity to town roads and existing community infrastructure.
- Located approximately 7 miles northwest of Marion and 6.5 miles southeast of Bridgewater.
- Attractive blend of current agricultural income potential and future development possibilities.

Area Information

[South Dakota Game, Fish and Parks](#)

[Turner County](#)

[City of Bridgewater](#)

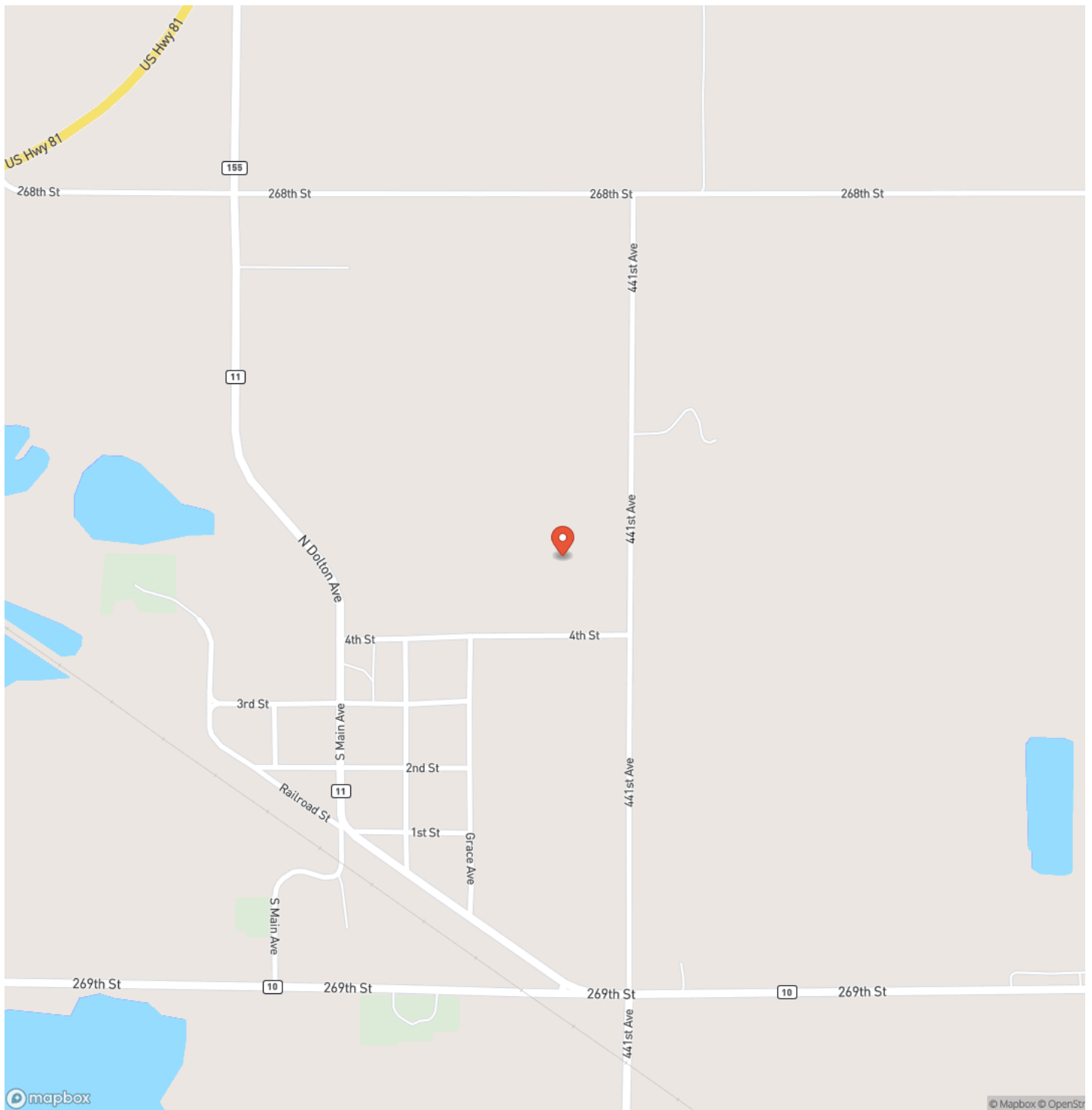
[City of Marion](#)



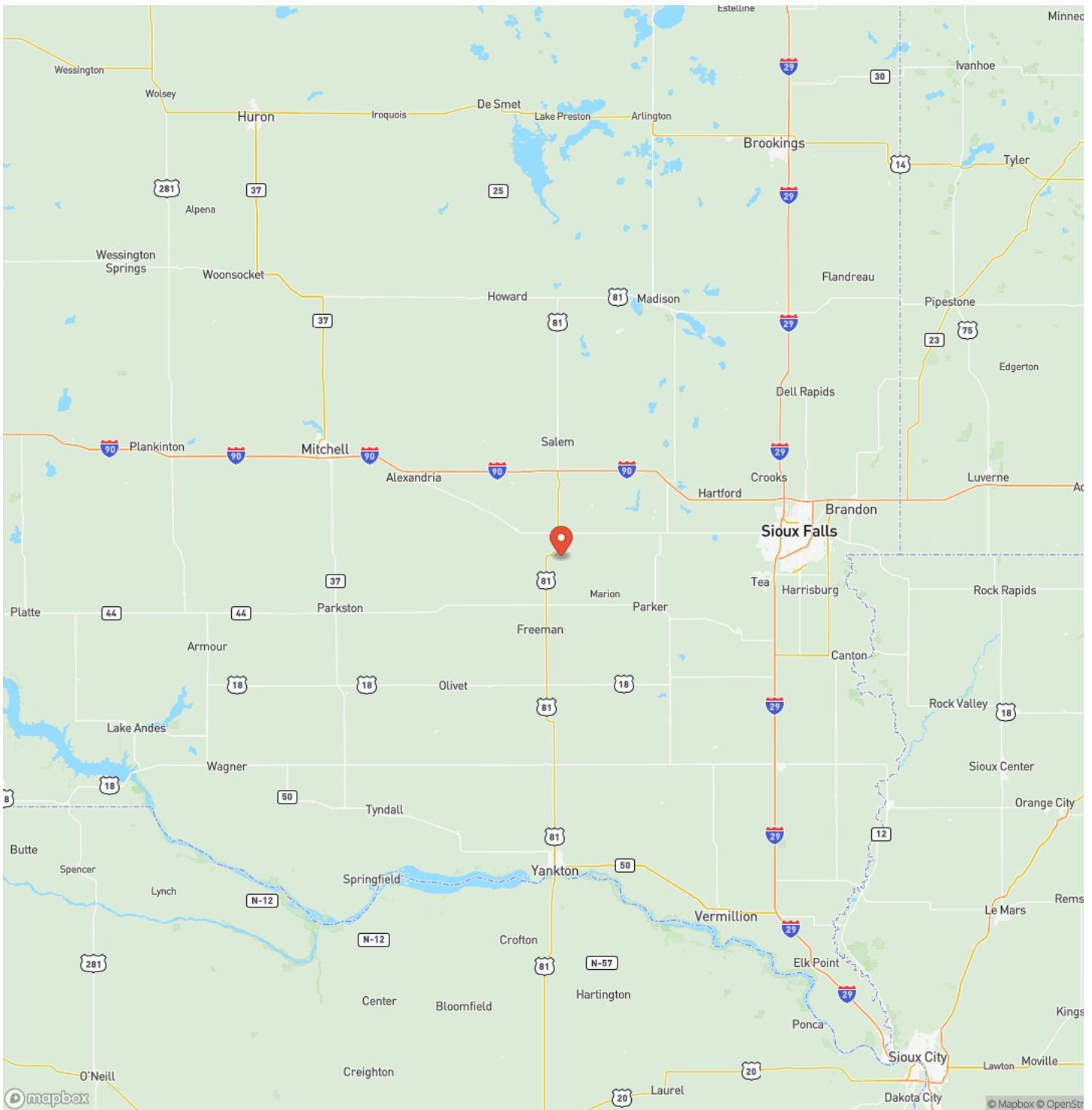
Turner County, SD 61 Acres
Bridgewater, SD / McCook County



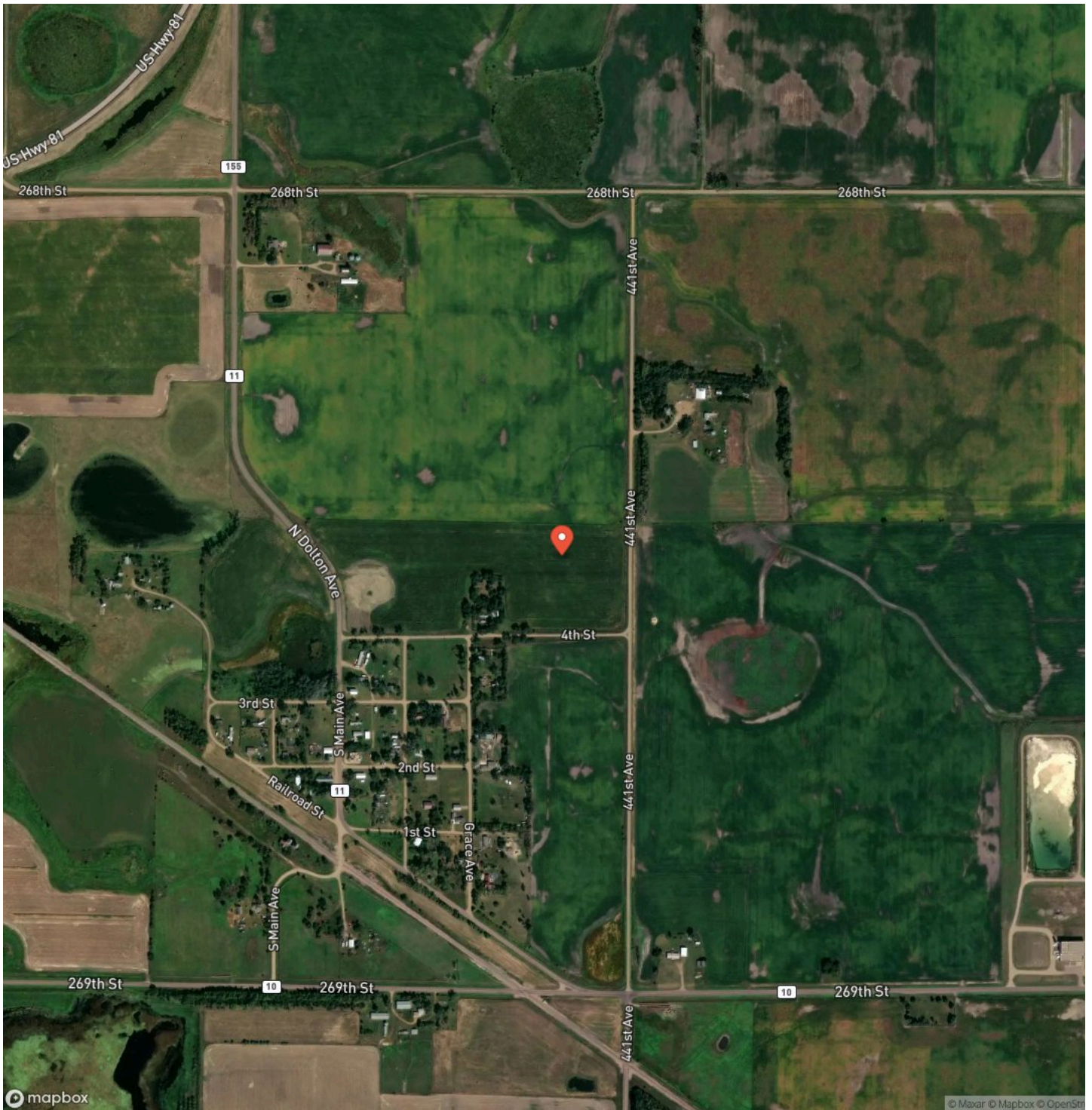
Locator Map



Locator Map



Satellite Map



DISCLAIMERS

The information contained here is deemed reliable but is not warranted or guaranteed by the Broker, Its Agents, or the Seller. Access to property, access to utilities, or any measurement including but not limited to, acreage, square footage and mapping boundary lines shared herein has not been independently verified and is for marketing purposes only. If exact measurement, access to property, or access to utilities is a concern, the property should be independently measured or investigated by the prospective buyer.

COOPERATING BROKER COMPENSATION:

When purchasing a property listed by Tall Tines Trophy Properties, a Buyer's Broker must be identified during the first contact and must also be present at all showing of the property in order to qualify for a share of the real estate commission. If these conditions are not met, any compensation for the Buyer's Broker will be entirely at the discretion of Tall Tines Trophy Properties.



Tall Tines Trophy Properties
PO Box 23
Presho, SD 57568
(605) 840-9578
<https://talltinesproperties.com/>

