

REBUL ACADEMY



ONE-OF-A KIND OPPORTUNITY ON 8.9±
ACRES IN HINDS COUNTY, MS

\$750,000



TOM SMITH
ALC®, BROKER

O: 601.898.2772 | C: 601.454.9397
Tom@TomSmithLand.com



BRADY RICHARDSON
REALTOR®

O: 601.898.2772 | C: 662.418.8791
Brady@TomSmithLand.com

TomSmithLandandHomes.com

Information is believed to be accurate but not guaranteed.





Tom Smith Land and Homes presents - Rebul Academy. This one-of-a-kind property is located on 8.9± acres in southern Hinds County and is now available for purchase. This special-use property, which served the community for over 57 years before closing in June 2024, is in excellent condition. The property includes six buildings totaling 33,116 sq ft, featuring a modern 10,000 sq ft gymnasium with new scoreboards, drop-down goals, air conditioning, four locker rooms with showers, four hospitality rooms, a concession area, and open spaces. The educational buildings include facilities for elementary, upper, and lower high school levels, a kindergarten, and a cafeteria. The property also features a gated entry for added security. Please note the property is being sold with improvements only, with contents not included. For further details or to schedule a visit, please contact Tom or Brady today!

Pre-Approved Buyers Only; Agent Must Be Present on All Showings

TOM SMITH
ALC®, BROKER

O: 601.898.2772 | C: 601.454.9397
Tom@TomSmithLand.com



BRADY RICHARDSON
REALTOR®

O: 601.898.2772 | C: 662.418.8791
Brady@TomSmithLand.com

TomSmithLandandHomes.com

Information is believed to be accurate but not guaranteed.





TOM SMITH
ALC®, BROKER

O: 601.898.2772 | C: 601.454.9397
Tom@TomSmithLand.com



BRADY RICHARDSON
REALTOR®

O: 601.898.2772 | C: 662.418.8791
Brady@TomSmithLand.com

TomSmithLandandHomes.com

Information is believed to be accurate but not guaranteed.





TOM SMITH

ALC®, BROKER

Office: 601.898.2772

Cell: 601.454.9397

Tom@TomSmithLand.com



Call The Land Man Today!

TomSmithLandandHomes.com

Information is believed to be accurate but not guaranteed.





TOM SMITH
ALC®, BROKER

O: 601.898.2772 | C: 601.454.9397
Tom@TomSmithLand.com



BRADY RICHARDSON
REALTOR®

O: 601.898.2772 | C: 662.418.8791
Brady@TomSmithLand.com

TomSmithLandandHomes.com

Information is believed to be accurate but not guaranteed.





TOM SMITH
ALC®, BROKER

O: 601.898.2772 | C: 601.454.9397
Tom@TomSmithLand.com



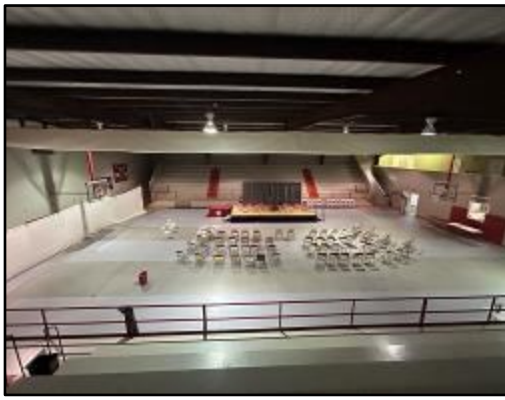
BRADY RICHARDSON
REALTOR®

O: 601.898.2772 | C: 662.418.8791
Brady@TomSmithLand.com

TomSmithLandandHomes.com

Information is believed to be accurate but not guaranteed.





TOM SMITH
ALC®, BROKER

O: 601.898.2772 | C: 601.454.9397
Tom@TomSmithLand.com



BRADY RICHARDSON
REALTOR®

O: 601.898.2772 | C: 662.418.8791
Brady@TomSmithLand.com

TomSmithLandandHomes.com

Information is believed to be accurate but not guaranteed.



AERIAL MAP



[CLICK HERE FOR A LANDID INTERACTIVE MAP](#)

TOM SMITH
ALC®, BROKER

O: 601.898.2772 | C: 601.454.9397
Tom@TomSmithLand.com



BRADY RICHARDSON
REALTOR®

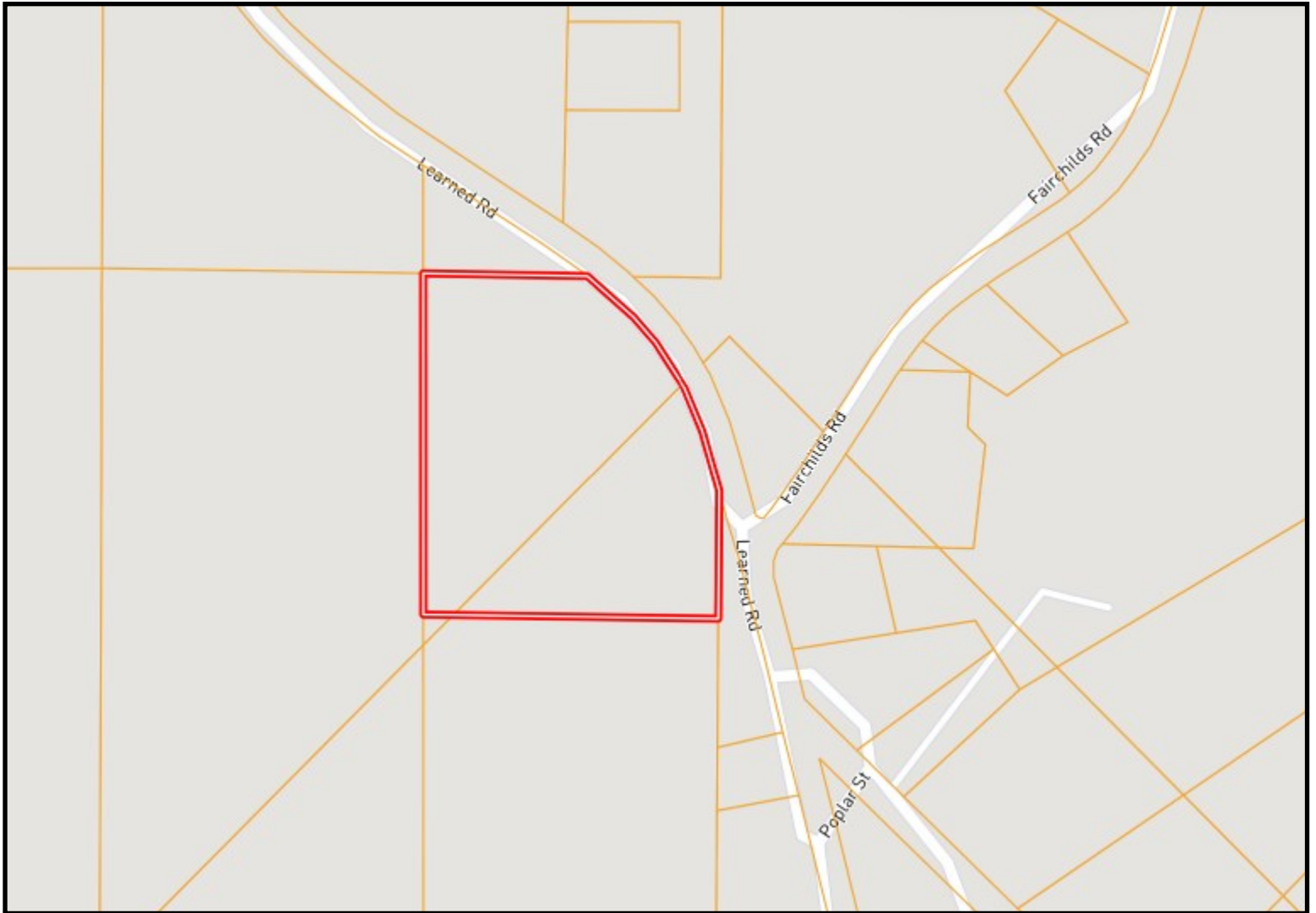
O: 601.898.2772 | C: 662.418.8791
Brady@TomSmithLand.com

TomSmithLandandHomes.com

Information is believed to be accurate but not guaranteed.



OWNERSHIP MAP



TOM SMITH

ALC®, BROKER

O: 601.898.2772 | C: 601.454.9397

Tom@TomSmithLand.com



BRADY RICHARDSON

REALTOR®

O: 601.898.2772 | C: 662.418.8791

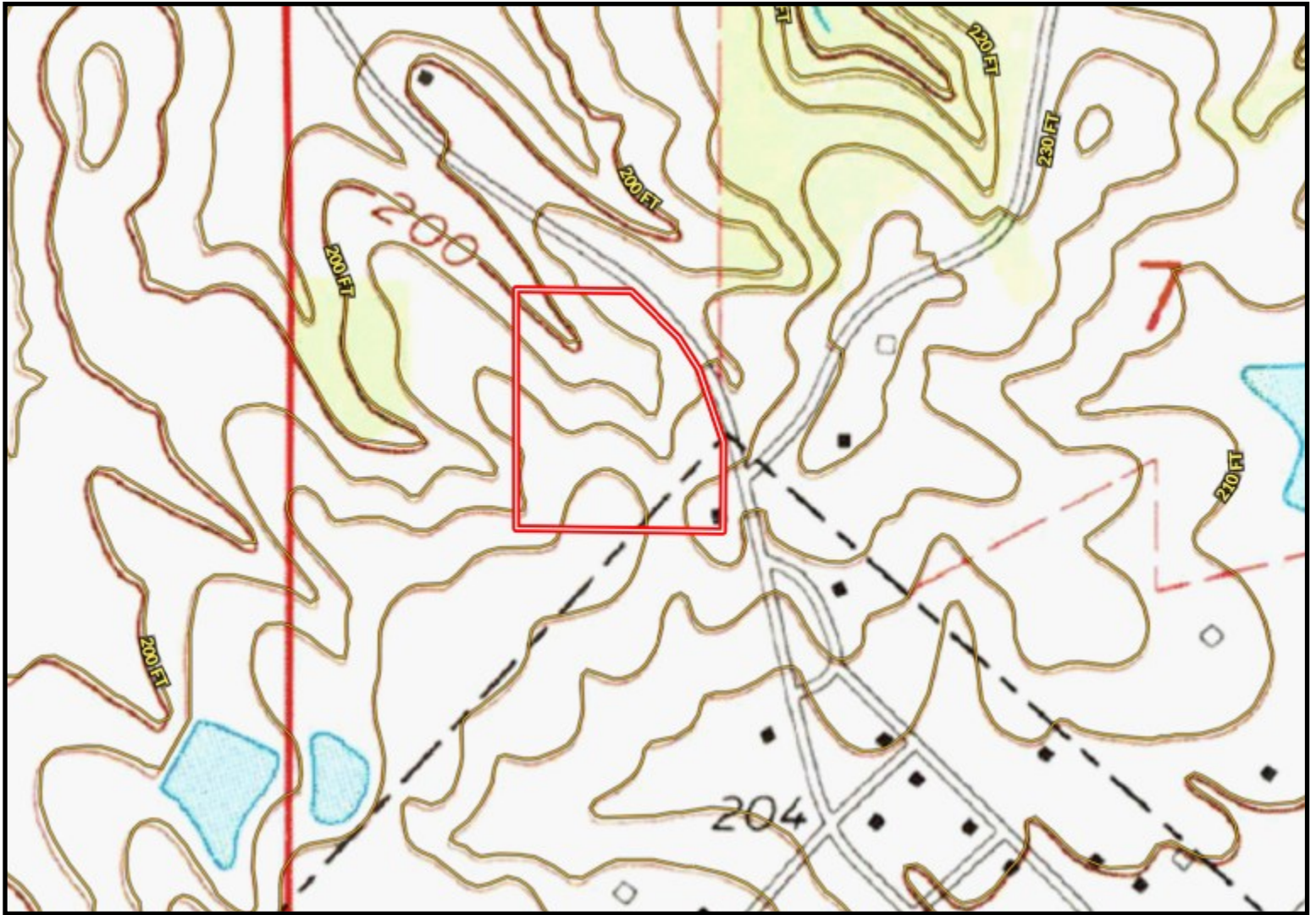
Brady@TomSmithLand.com

TomSmithLandandHomes.com

Information is believed to be accurate but not guaranteed.



TOPOGRAPHY MAP



TOM SMITH
ALC®, BROKER

O: 601.898.2772 | C: 601.454.9397
Tom@TomSmithLand.com



BRADY RICHARDSON
REALTOR®

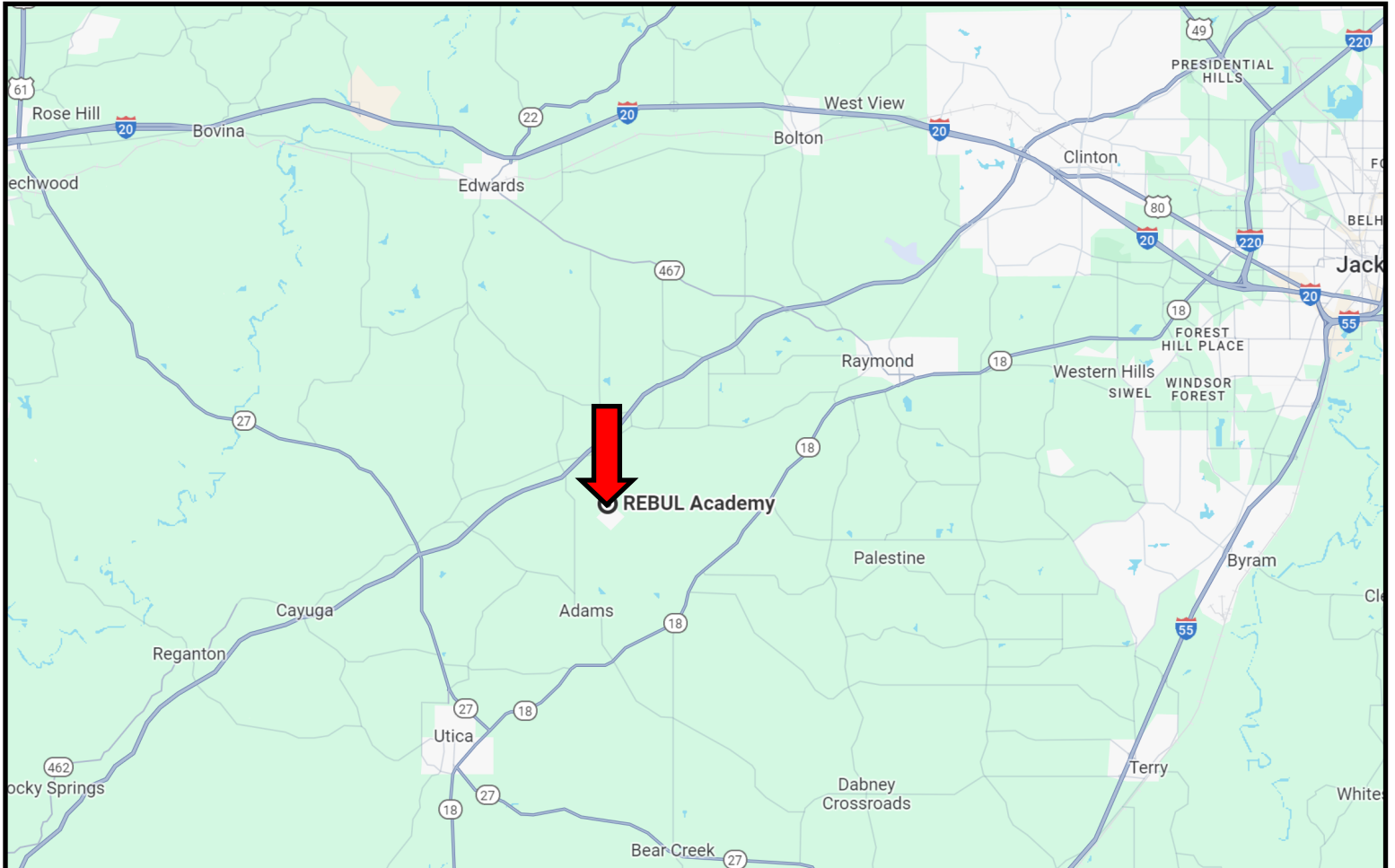
O: 601.898.2772 | C: 662.418.8791
Brady@TomSmithLand.com

TomSmithLandandHomes.com

Information is believed to be accurate but not guaranteed.



DIRECTIONAL MAP



Directions from I-20 and Hwy 18 in Jackson, MS: Take exit 40A to merge onto Hwy 18 W towards Raymond. Travel Hwy 18 for 11.6 miles. Turn right onto Old Port Gibson Road and travel .4 mile. Turn left to keep onto Old Port Gibson Road and travel 7.3 miles. Turn left onto Learned Road. After 180 feet, the property will be on your right.

[GOOGLE MAP LINK](#)



TOM SMITH
ALC®, BROKER

O: 601.898.2772 | C: 601.454.9397
Tom@TomSmithLand.com



BRADY RICHARDSON
REALTOR®

O: 601.898.2772 | C: 662.418.8791
Brady@TomSmithLand.com

TomSmithLandandHomes.com

Information is believed to be accurate but not guaranteed.

