



## MORRILL COUNTY ACREAGE



*A secluded country home with stunning views.*

**SCOTT SAULTS**

Associate Broker

Scott's Cell: 308-289-1383

Email: [scott@lashleyland.com](mailto:scott@lashleyland.com)

# PROPERTY HIGHLIGHTS

## List Price

~~\$475,000~~

\$425,000

## Location

8150 Rd 74, Bridgeport, NE 69336

6 miles Southeast of Redington, NE or 20 miles Southwest of Bridgeport, NE.

## Legal Description

Pt SW1/4 S13 T18 R52 West of the 6th P.M. Morrill County Nebraska

## Acres

6.75±

Buyers and Sellers acknowledge all represented acres are based on the County Assessor's records. Buyers acknowledge that they are purchasing a legal description, and acknowledge that fences may or may not be on the property lines.

## Taxes - Estimated

\$3,798.72

## Property Summary

This is a great country home nestled along a secluded county road offering peace, privacy, and gorgeous views. This well-maintained home is 15 years old, and in very good condition. The inviting open floor plan is perfect for gatherings and enjoying the natural light that flows throughout the home. There are 3 bedrooms, 3 bathrooms, and a total of 2,081 sqft. of living space on the main floor. An unfinished basement with the same main level square footage opens up the possibilities for expansion and storage. The house has propane heat and central air.

Enjoy the views of wildlife and pine-covered hills from the large deck on the south side of the home. Deer and elk are abundant here, making this a dream location for wildlife and nature lovers. If you are looking for a quiet retreat off the beaten path, this is the property for you.

Call Scott Saults for questions, or to schedule and viewing of this property.

All information herein is from sources deemed reliable, however the accuracy is not guaranteed by Lashley Land and Recreational Brokers, Inc., seller or agent. Offering is subject to error, omissions, prior sale, price change or withdrawal without notice.

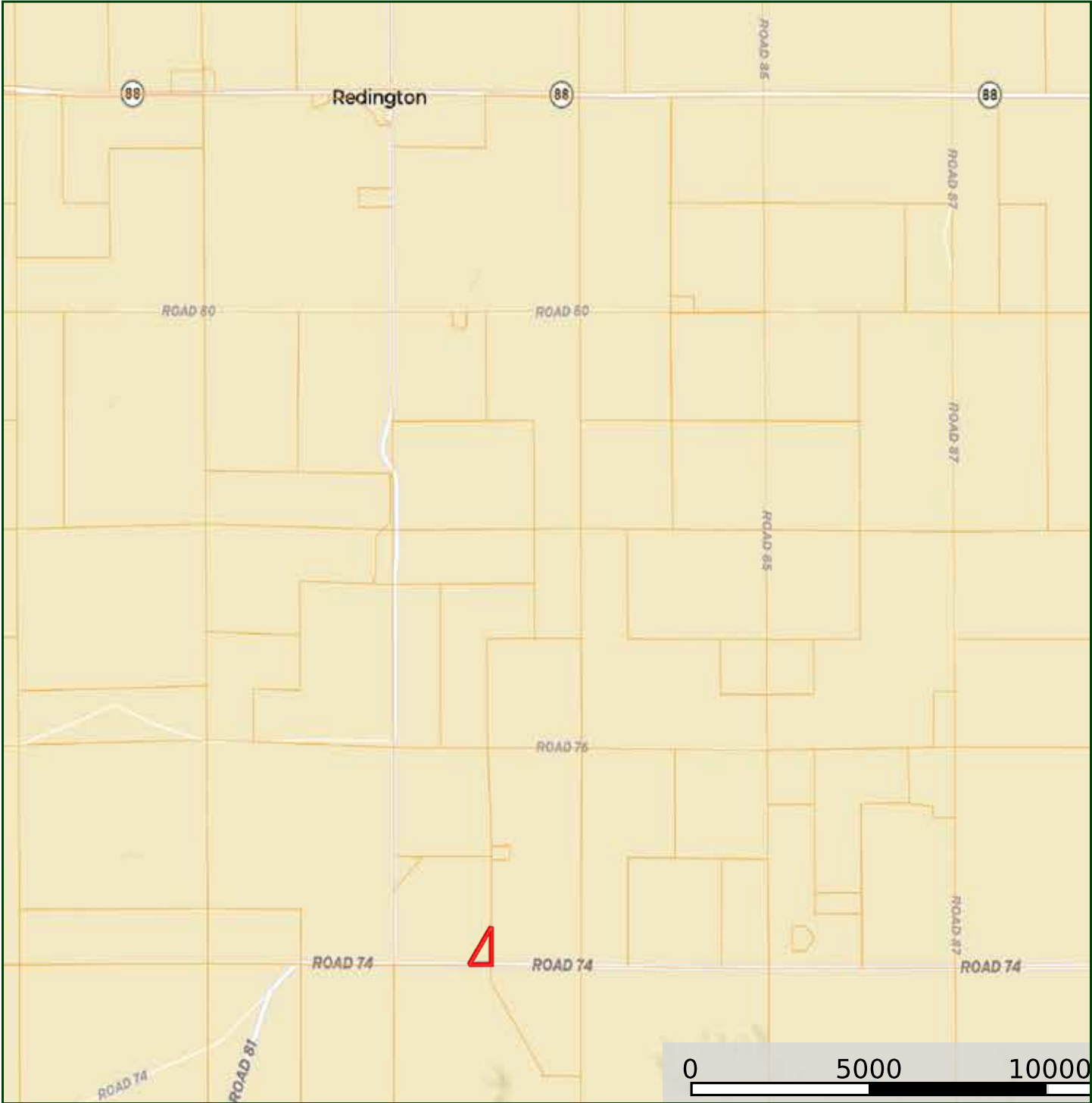
SCOTT SAULTS

Associate Broker

Scott's Cell: 308-289-1383

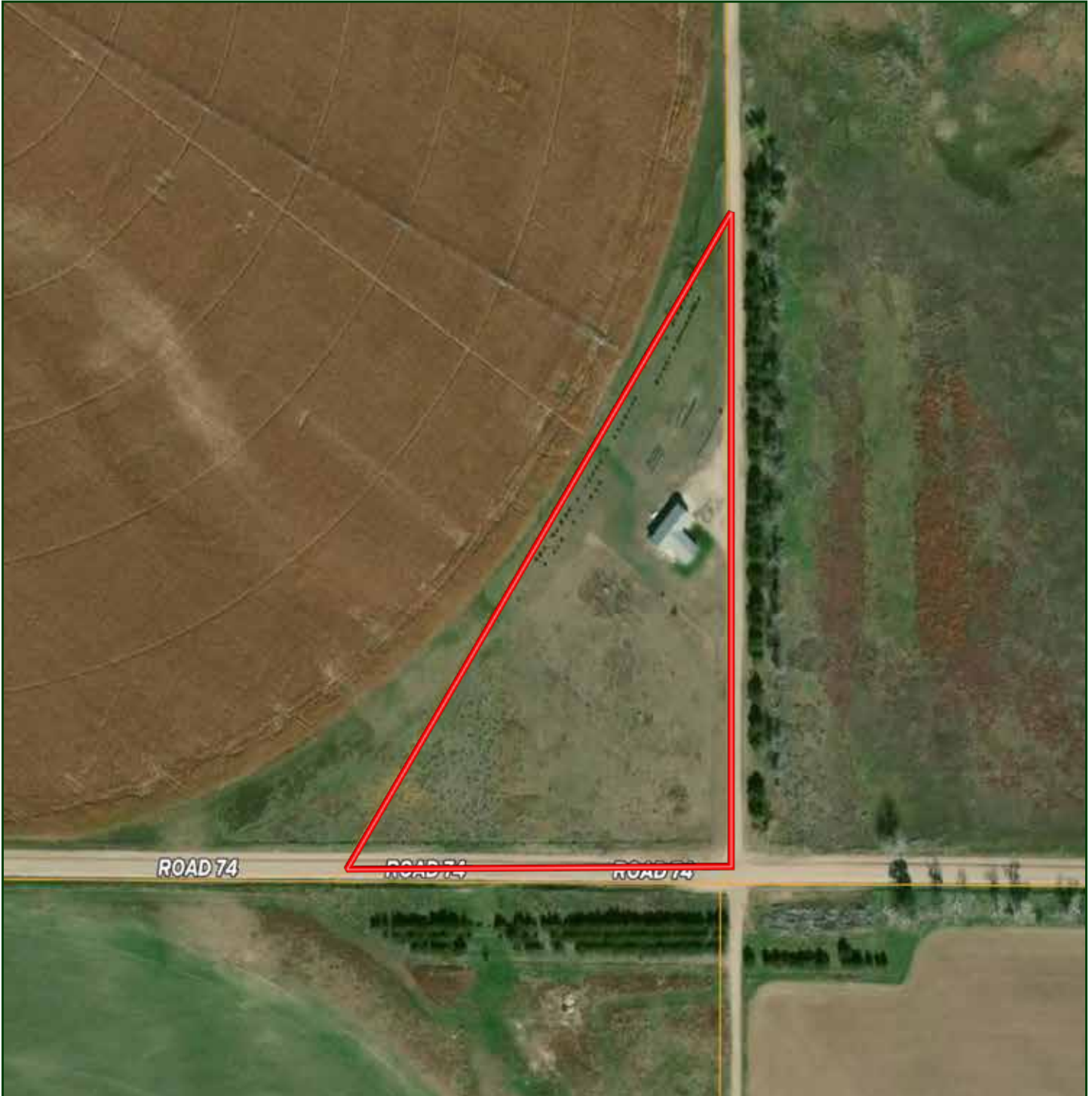
Email: [scott@lashleyland.com](mailto:scott@lashleyland.com)

# LOCATION MAP



Boundary lines are estimates - Map for illustration only

# AERIAL MAP



Boundary lines are estimates - Map for illustration only

**SCOTT SAULTS**

Associate Broker

Scott's Cell: 308-289-1383

Email: [scott@lashleyland.com](mailto:scott@lashleyland.com)

# PROPERTY IMAGES



# PROPERTY IMAGES



SCOTT SAULTS  
Associate Broker  
Scott's Cell: 308-289-1383  
Email: [scott@lashleyland.com](mailto:scott@lashleyland.com)

# PROPERTY IMAGES





## NEBRASKA EXPERTS, NATIONAL EXPOSURE.

### Contact Information

Office: 308-532-9300

Fax: 308-532-1854

Email: [info@lashleyland.com](mailto:info@lashleyland.com)

Website: [LashleyLand.com](http://LashleyLand.com)

### Mike Lashley, Owner|Broker

Amy Lashley-Johnston, Scott Saults, Skip Marland, Jordan Maassen, April Good, Jon Farley, Tami Timmerman-Lashley, Randy Helms, Bill Grant, Shane Mauch, Jake McQuillen, Brandi Housman, Leala Jimerson, Stephanie Miller, DeAnn Vaughn, Ann Gray, Jake Hopwood, Bryan Cabrera, Lindsey Feuerborn, Robby Uehran, and Tom Moss

Like us on Facebook  
[Facebook.com/LashleyLand](https://www.facebook.com/LashleyLand)

2218 E. Walker Road • North Platte, NE 69101



## SCOTT SAULTS

Associate Broker

Scott's Cell: 308-289-1383

Email: [scott@lashleyland.com](mailto:scott@lashleyland.com)