

Diverse Recreational/Investment Tract 160+/- acres in Lauderdale County, MS



\$384,000



**BRADY
RICHARDSON**
REALTOR®

Office: 601.898.2772

Cell: 662.418.8791

Brady@TomSmithLand.com



Expect More. Get More.

A Real Estate Expert You Can Trust

TomSmithLandandHomes.com

Information is believed to be accurate but not guaranteed.





This 160± acre tract in Lauderdale County, MS, offers the perfect blend of investment and recreation. The property features 16-year-old planted pine trees positioned for future timber returns, along with hardwood fingers running along the creek bottoms that add to the diversity found on the property. An extensive, well-maintained road system makes the property easily accessible, while seven established food plots provide prime hunting locations depending on the wind. Wildlife is abundant, with frequent signs of deer, turkey, and other game, making this property a true outdoorsman's paradise. Whether you're looking for a productive timber tract, a private hunting retreat, or both, this property checks all the boxes. Access to the property is located at a dead-end county road. Call Brady to schedule your private showing today!

A Real Estate Expert *You Can Trust!*

BRADY RICHARDSON
REALTOR®

O: 601.898.2772 C: 662.418.8791

Brady@TomSmithLand.com

TomSmithLandandHomes.com



Expect More. Get More.

Information is believed to be accurate but not guaranteed.





A Real Estate Expert *You Can Trust!*

BRADY RICHARDSON
REALTOR®

O: 601.898.2772 C: 662.418.8791

Brady@TomSmithLand.com

TomSmithLandandHomes.com



Expect More. Get More.



Information is believed to be accurate but not guaranteed.



A Real Estate Expert *You Can Trust!*

BRADY RICHARDSON
REALTOR®

O: 601.898.2772 C: 662.418.8791

Brady@TomSmithLand.com

TomSmithLandandHomes.com



Expect More. Get More.



Information is believed to be accurate but not guaranteed.



A Real Estate Expert
You Can Trust!

BRADY RICHARDSON

REALTOR®

O: 601.898.2772 C: 662.418.8791

Brady@TomSmithLand.com

TomSmithLandandHomes.com

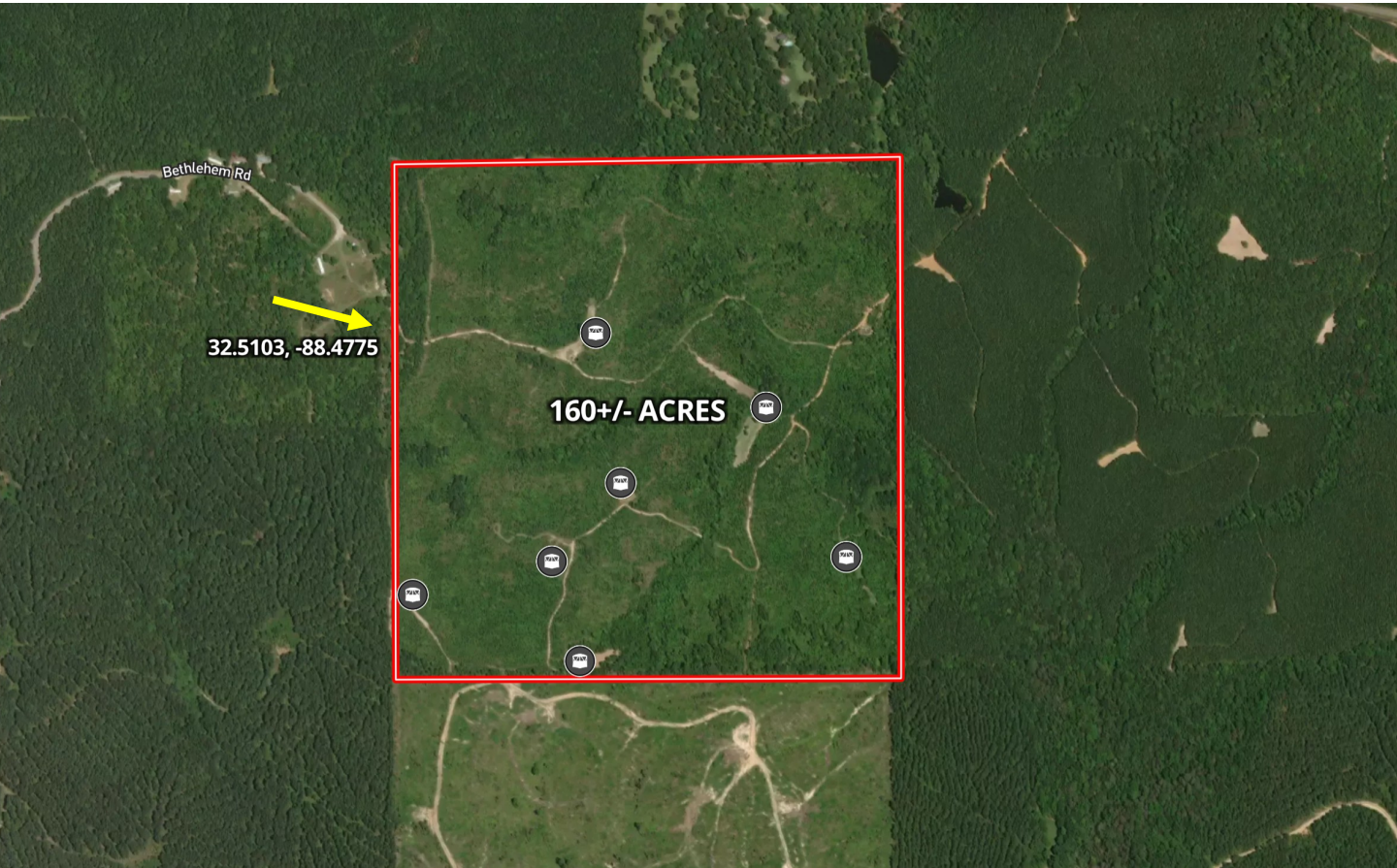


Expect More. Get More.

Information is believed to be accurate but not guaranteed.



Aerial Map



[Land ID Map Link](#)

A Real Estate Expert
You Can Trust!

BRADY RICHARDSON
REALTOR®

O: 601.898.2772 C: 662.418.8791

Brady@TomSmithLand.com

TomSmithLandandHomes.com

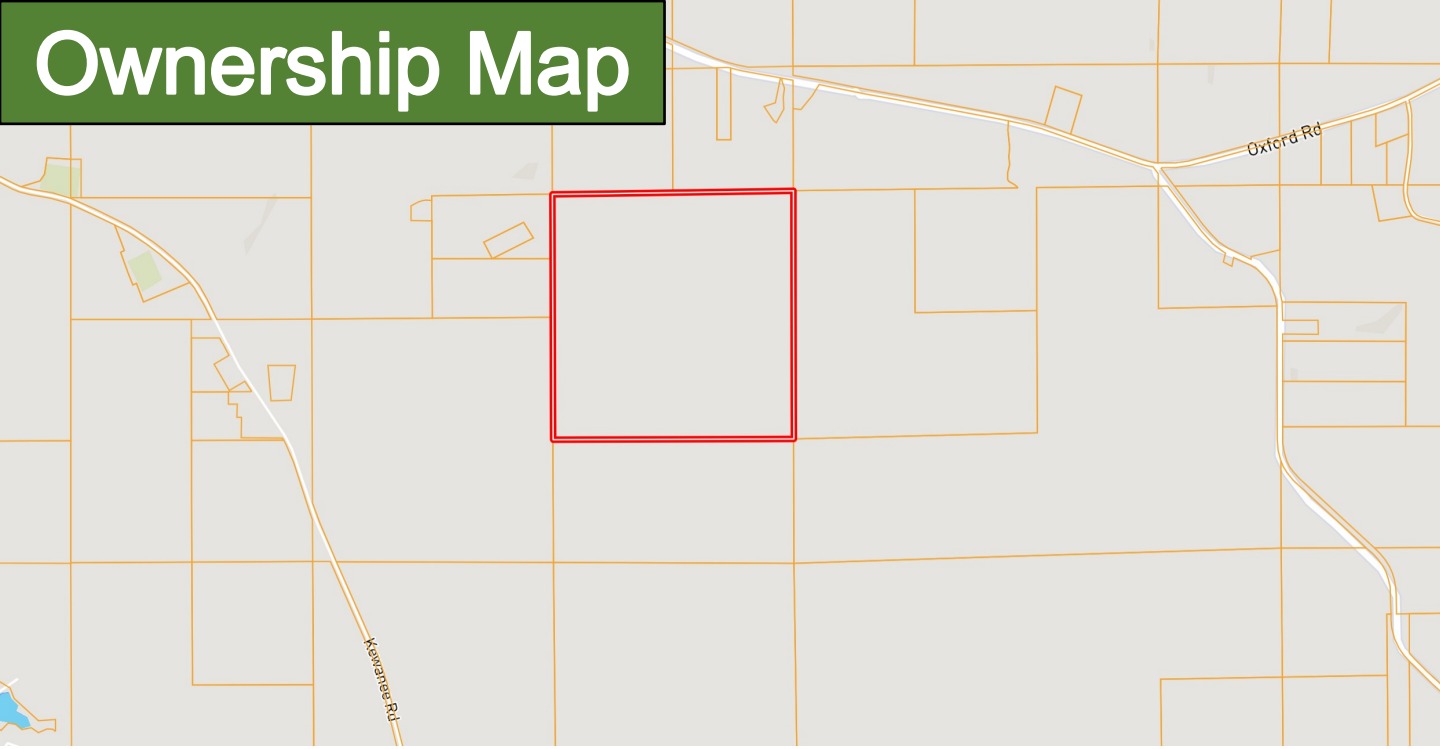


Expect More. Get More.

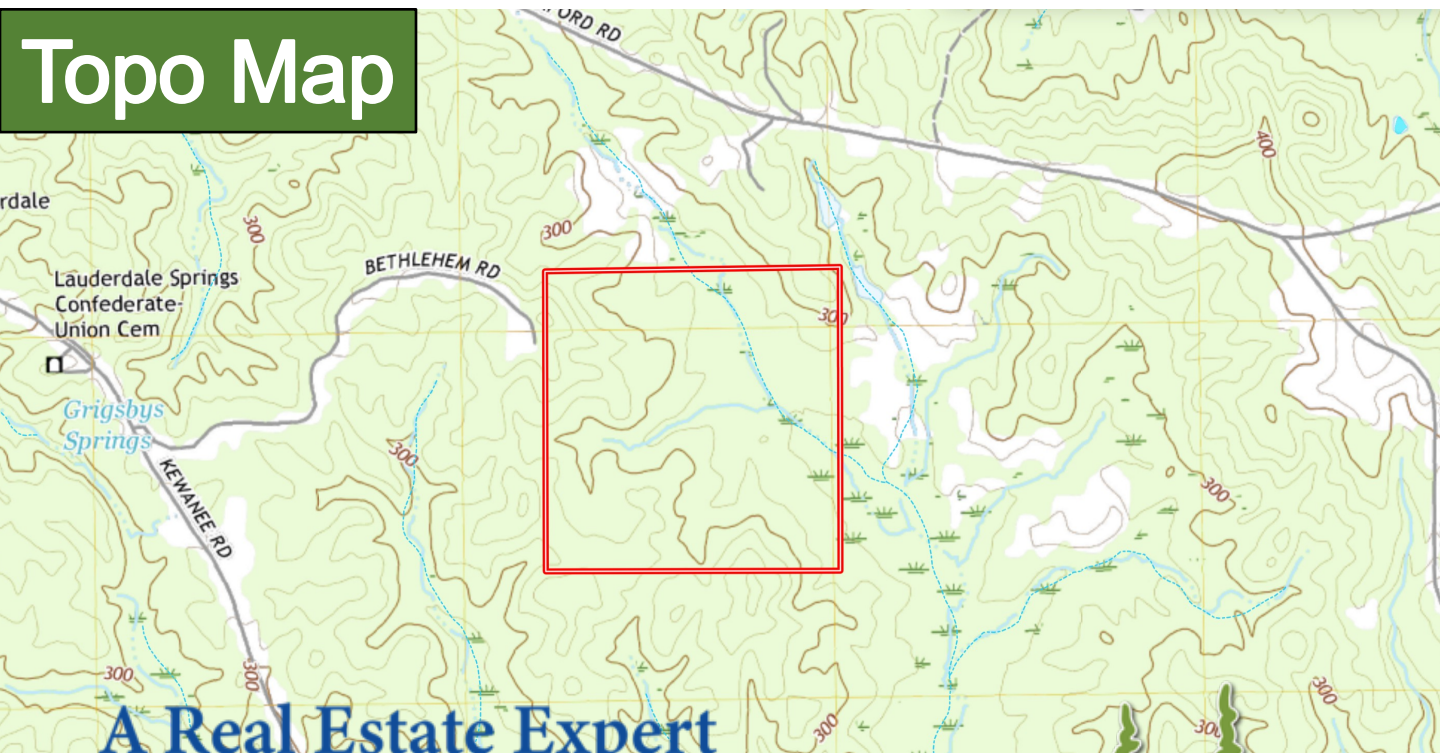
Information is believed to be accurate but not guaranteed.



Ownership Map



Topo Map



A Real Estate Expert
You Can Trust!

BRADY RICHARDSON

REALTOR®

O: 601.898.2772 C: 662.418.8791

Brady@TomSmithLand.com

TomSmithLandandHomes.com

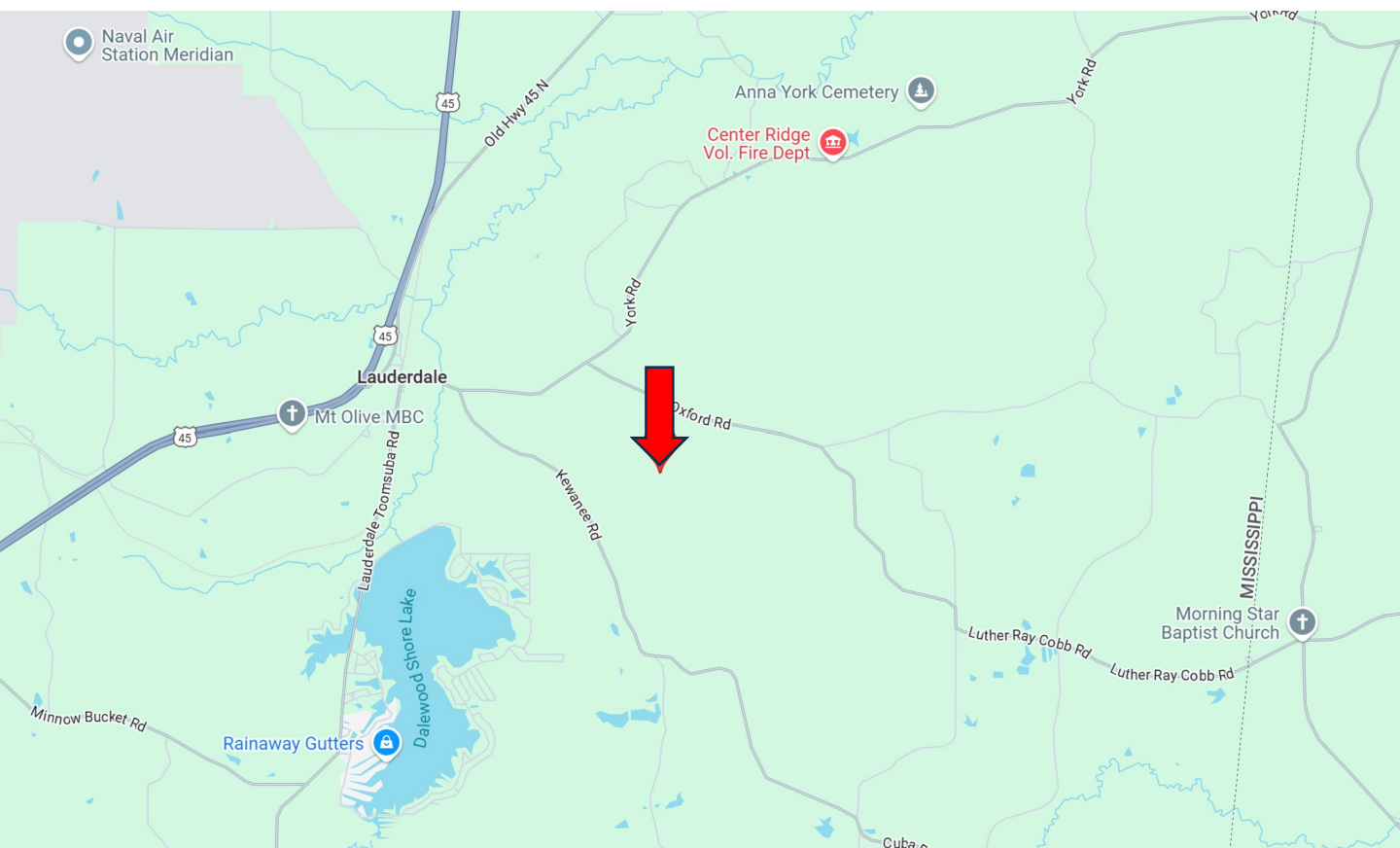


Expect More. Get More.



Information is believed to be accurate but not guaranteed.

Directional Map



Directions from Hwy 45 N and Old Hwy 45 N in Lauderdale, MS:

Travel Southeast on Old Hwy 45 N for 0.2 miles. Turn right onto York Road and travel 0.6 miles. Turn right onto Kewanee Road and travel 1.2 miles. Make a slight left onto Bethlehem Road. After 0.9 miles, the road will dead-end at the property. [Google Map Link](#)



**BRADY
RICHARDSON**
REALTOR®

Office: 601.898.2772

Cell: 662.418.8791

Brady@TomSmithLand.com



Expect More. Get More.

A Real Estate Expert You Can Trust

TomSmithLandandHomes.com

Information is believed to be accurate but not guaranteed.

