

# LAND FOR SALE



## South Platte River Pivot

124.4 ± ACRES | KEITH COUNTY, NEBRASKA

### Unique Opportunity!

Own a Certified Organic Farm with prime waterfowl hunting in an excellent location between I-80 and the South Platte River.



Bruce Dodson, AFM

#### LISTING AGENT:

**BRUCE DODSON, AFM**

**C: 308.539.4455 | E: Bruce@AgriAffiliates.com**

*Chase Dodson, Bonnie Downing, D.J. Lunkwitz, Faith Correll,  
Mike Polk, Don Walker.*

View Full Brochure  
& Listing



Offered exclusively by:

**AGRI AFFILIATES, INC.**  
*Providing Farm & Ranch Real Estate Services*

**North Platte, NE • AgriAffiliates.com • 308.534.9240**

Information contained herein was obtained from sources deemed reliable. We have no reason to doubt the accuracy, but the information is not guaranteed. Prospective Buyers should verify all information. All maps provided by Agri Affiliates, Inc. are approximations only, to be used as a general guideline, and not intended as survey accurate. As with any agricultural land, this property may include noxious weeds. Agri Affiliates, Inc. and all agents are acting as Agent of the Seller.



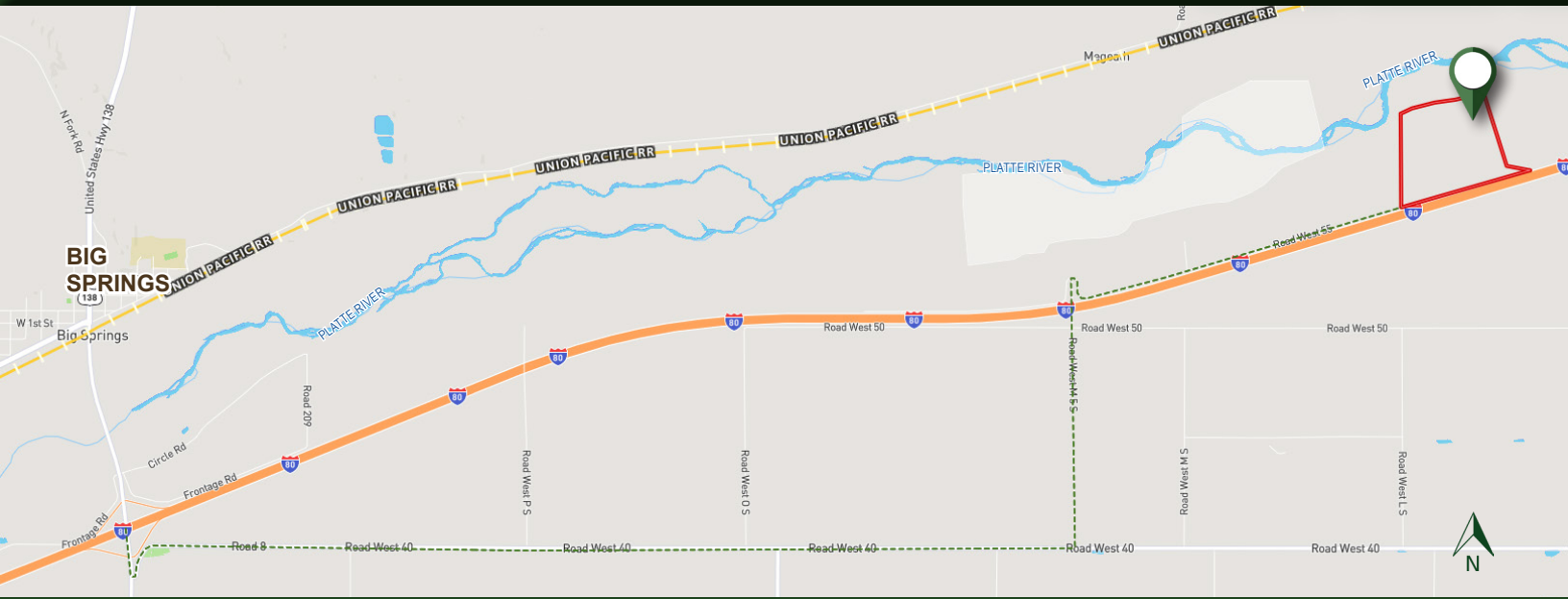
## PROPERTY INFORMATION

<b>LEGAL DESCRIPTION:</b>	Keith County Assessor's PID# 263313701, 263318501, and 263318700, A.K.A. a tract lying south of River in SW1/4 19-13-40 and a Tract in NW1/4 lying north of the south line of Theeaton & McGrath irrigation ditch in Section 30, Township 13N, Range 40, and a tract south of south line of Eaton-McGrath irrigation ditch and north of I-80 in Section 30, Township 13N, Range 40, all West of the 6th P.M. in Keith County, Nebraska.
<b>LOCATION DIRECTIONS:</b>	From the I-80 Big Springs, Nebraska exit # 107, travel south on Link 25B for approximately ¼ mile and turn east on Road 8 (just before Big Springs Equipment). Travel down Road 8 (merges to Road West 40) for approximately 4.4 miles. Then, turn north on Road West M 5 S for approximately 1 ¼ miles as you travel over I-80 via viaduct. Turn east on Road West 55 for approximately 1.65 miles to the south west corner of the property.
<b>ACRES &amp; TAXES:</b>	124.44 Tax Assessed Acres; 2023 Taxes Payable in 2024: \$3,404
<b>NRD:</b>	Twin Platte Natural Resources District
<b>WATER RIGHTS:</b>	NE Reg: G-007346, test pumped at 1,000 gpm at 28', set at 500 gpm; 94.8 Certified Irrigated Acres with the Twin Platte NRD.
<b>FSA:</b>	Pending Information
<b>EQUIPMENT:</b>	2-Electric center pivots, 1-10Kw generator, 1-Johnson 60 Hp gear head, and Sargent pump. There is no engine with this property.
<b>POSSESSION:</b>	Possession of the property shall be delivered to purchaser at closing.
<b>PRICE:</b>	<b>\$660,000</b>

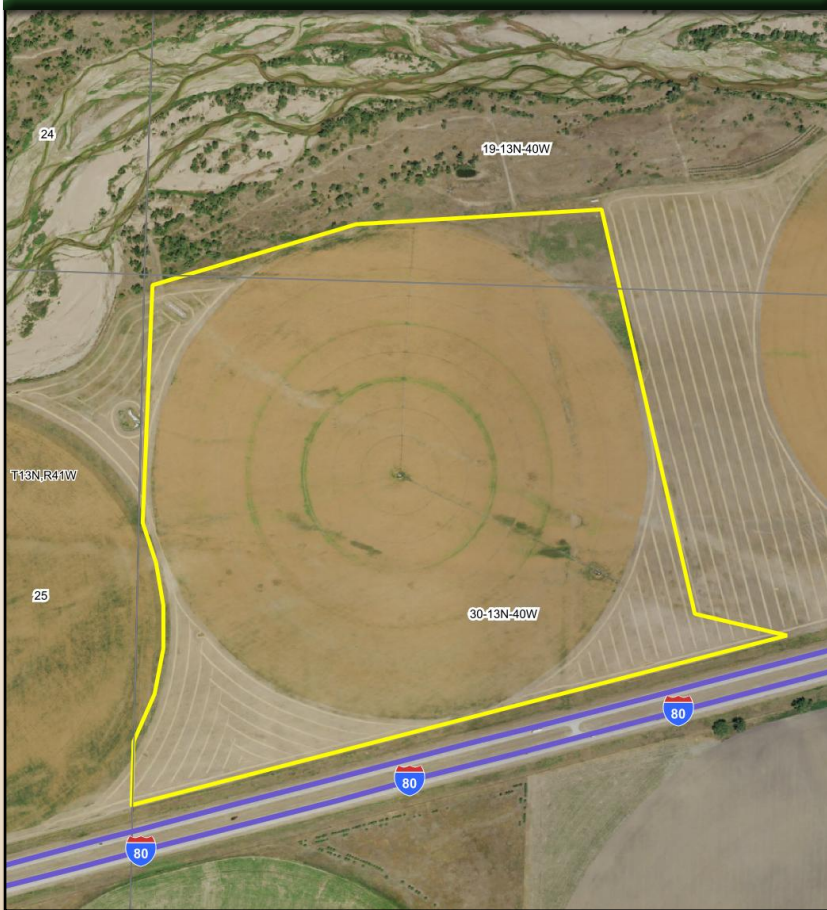




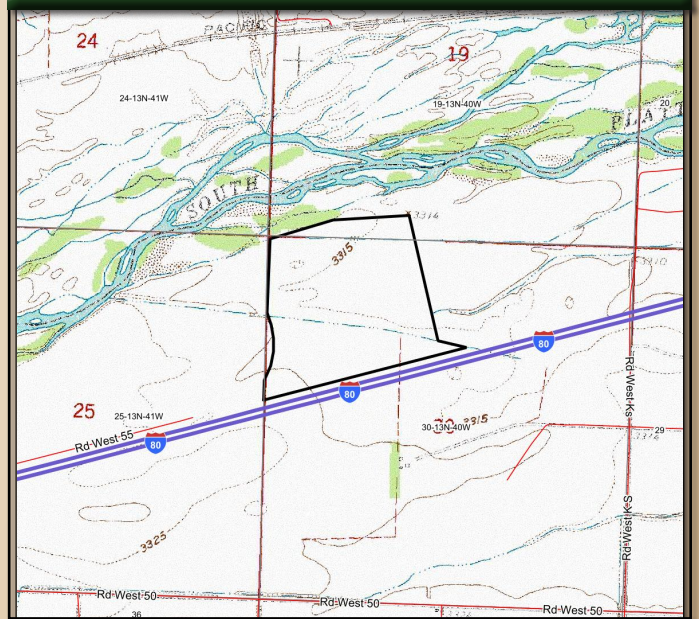
# LOCATION & MAPS



## AERIAL MAP

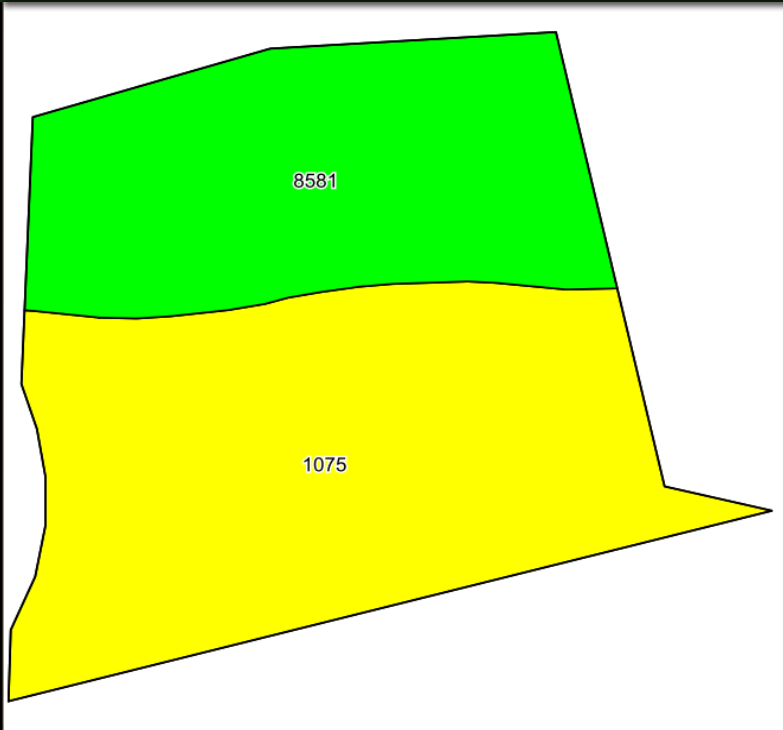


## TOPOGRAPHY MAP





# SOIL MAP

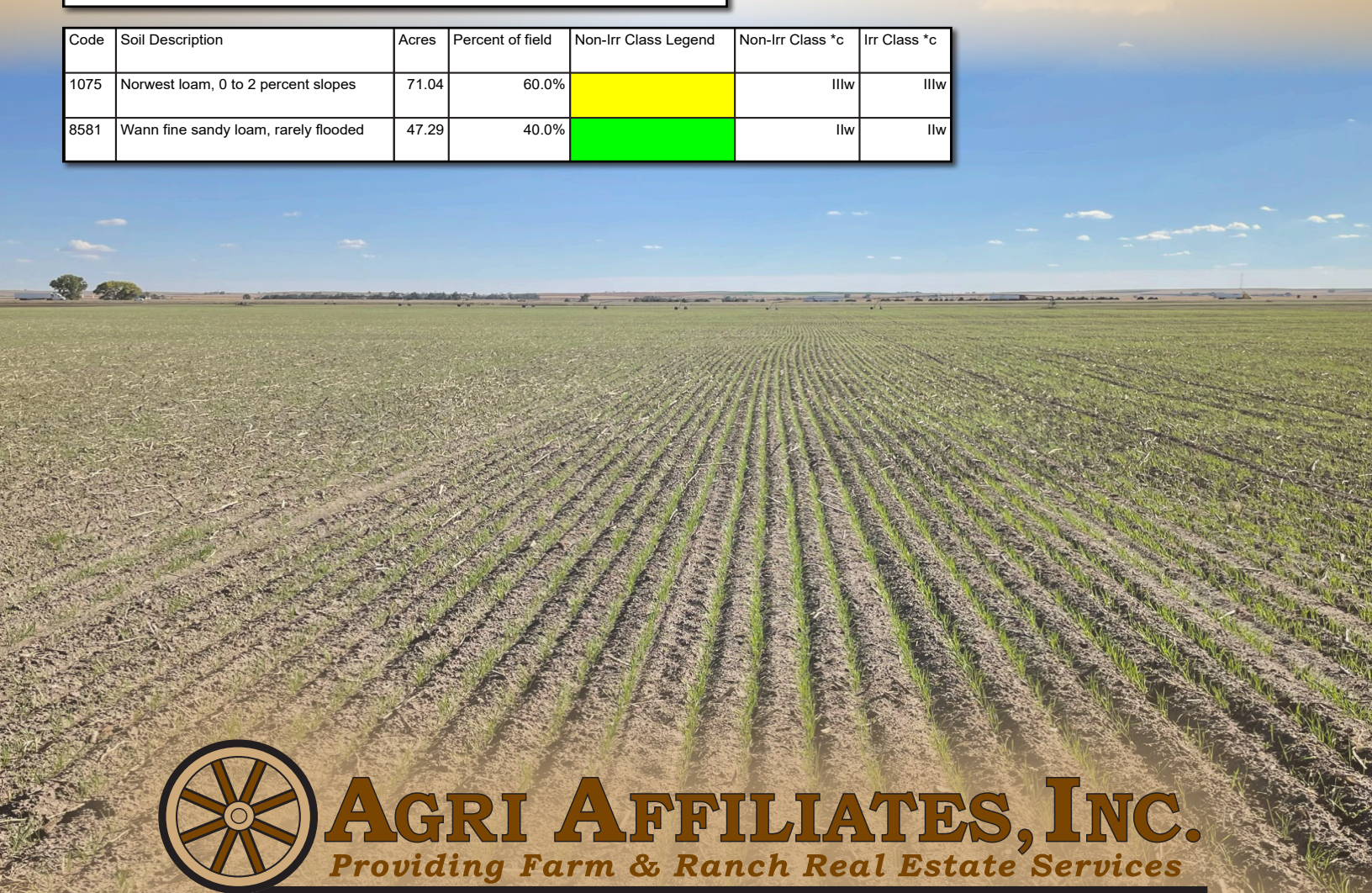


## Wildlife Opportunity

The organic cropland can serve a dual purpose of food plots for wildlife, especially goose hunting from pits.



Code	Soil Description	Acres	Percent of field	Non-Irr Class Legend	Non-Irr Class *c	Irr Class *c
1075	Norwest loam, 0 to 2 percent slopes	71.04	60.0%		IIW	IIIW
8581	Wann fine sandy loam, rarely flooded	47.29	40.0%		IW	IW



**AGRI AFFILIATES, INC.**  
*Providing Farm & Ranch Real Estate Services*

North Platte, NE • [AgriAffiliates.com](http://AgriAffiliates.com) • 308.534.9240