



SMALLTOWN

HUNTING PROPERTIES
& REAL ESTATESM

0.32± ACRE LOT
SEVIER COUNTY, TN
\$35,000



THE SEVIER 0.32

PROPERTY PROFILE

LOCATION:

- Sky View Drive
Sevierville, TN 37876
- Sky Harbor Subdivision
- Sevier County
- 5.6± Miles SE of the Dixie Stampede
- 7.6± Miles NE of Gatlinburg
- 13± Miles SE of Sevierville
- 34.2± Miles SE of Knoxville
- 35.6± Miles NE of Cades Cove

COORDINATES:

- 35.75433, -83.49317

PROPERTY USE:

- Home/Cabin Site
- Investment

PROPERTY INFORMATION:

- 0.32± Acres
- Corner Lot

TAX INFORMATION:

- Parcel 107P-C-001.00: \$81



SMALLTOWN
HUNTING PROPERTIES
& REAL ESTATESM

JUSTIN HASTY, ALC

ASSOCIATE BROKER

C: 706-671-4554

O: 478-382-2880

justin@smalltownproperties.com

P.O. Box 340 - Rocky Face, GA 30740

smalltownproperties.com

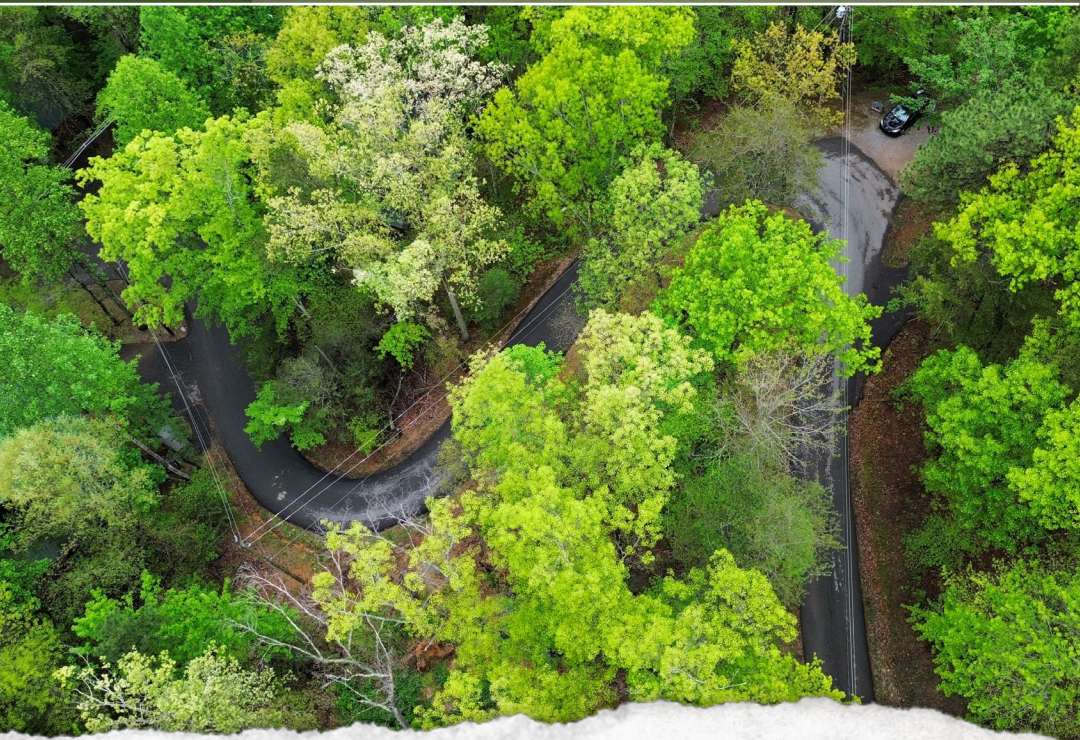
Information is believed to be accurate but not guaranteed.

WELCOME TO THE SEVIER 0.32

WELCOME TO YOUR FUTURE HOME OR CABIN SITE WITHIN SKY HARBOR SUBDIVISION IN SEVIERVILLE, TN. This vacant, 0.32± acre corner lot makes for a prime investment. The Sevier County tract is in an excellent location, being almost directly in the middle between Pigeon Forge and Gatlinburg. Residents enjoy the private community center as well as a putt-putt golf course inside the subdivision.

If you are interested in a package deal, be sure to see the other lot listed in the same subdivision.

Call Justin Hasty today for more details.



SMALLTOWN
HUNTING PROPERTIES
& REAL ESTATESM

JUSTIN HASTY, ALC

ASSOCIATE BROKER

C: 706-671-4554

O: 478-382-2880

justin@smalltownproperties.com

P.O. Box 340 - Rocky Face, GA 30740

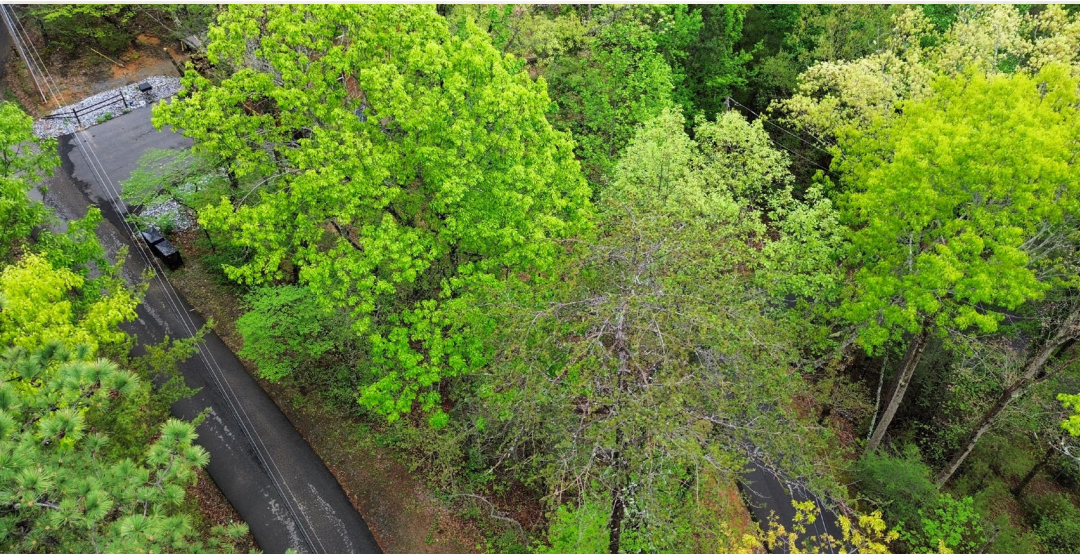
smalltownproperties.com

Information is believed to be accurate but not guaranteed.



0.32 ± ACRE LOT

SEVIER COUNTY, TENNESSEE



SMALLTOWN
HUNTING PROPERTIES
& REAL ESTATESM

JUSTIN HASTY, ALC

ASSOCIATE BROKER

C: 706-671-4554

O: 478-382-2880

justin@smalltownproperties.com

P.O. Box 340 - Rocky Face, GA 30740

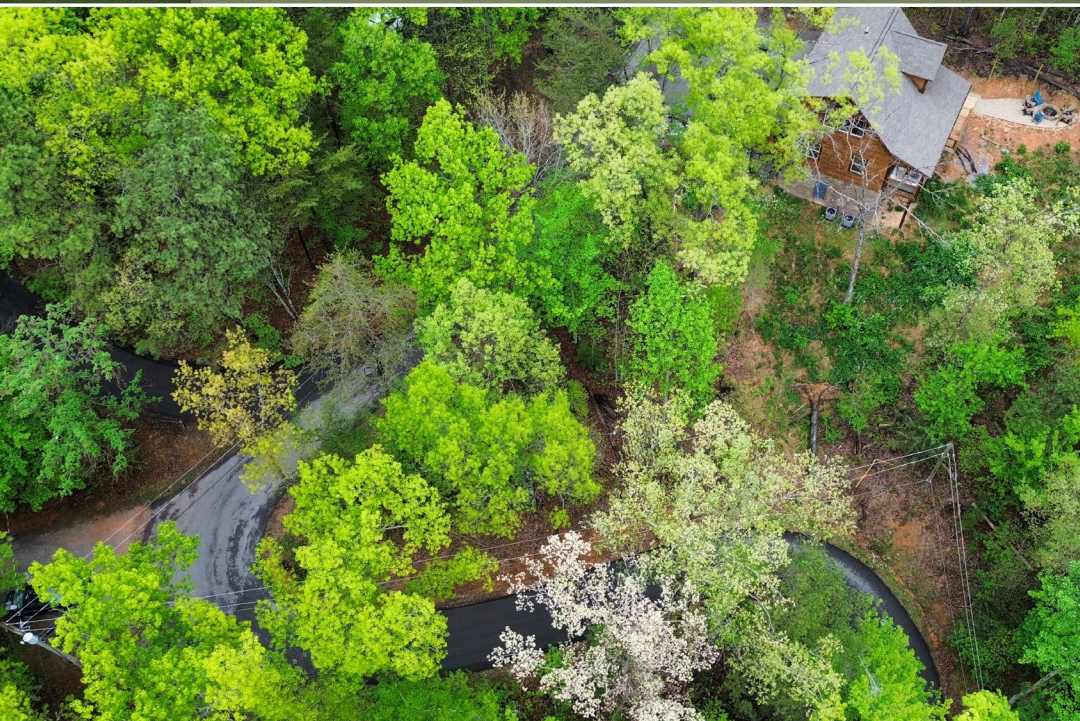
smalltownproperties.com

Information is believed to be accurate but not guaranteed.



0.32 ± ACRE LOT

SEVIER COUNTY, TENNESSEE



SMALLTOWN
HUNTING PROPERTIES
& REAL ESTATESM

JUSTIN HASTY, ALC

ASSOCIATE BROKER

C: 706-671-4554

O: 478-382-2880

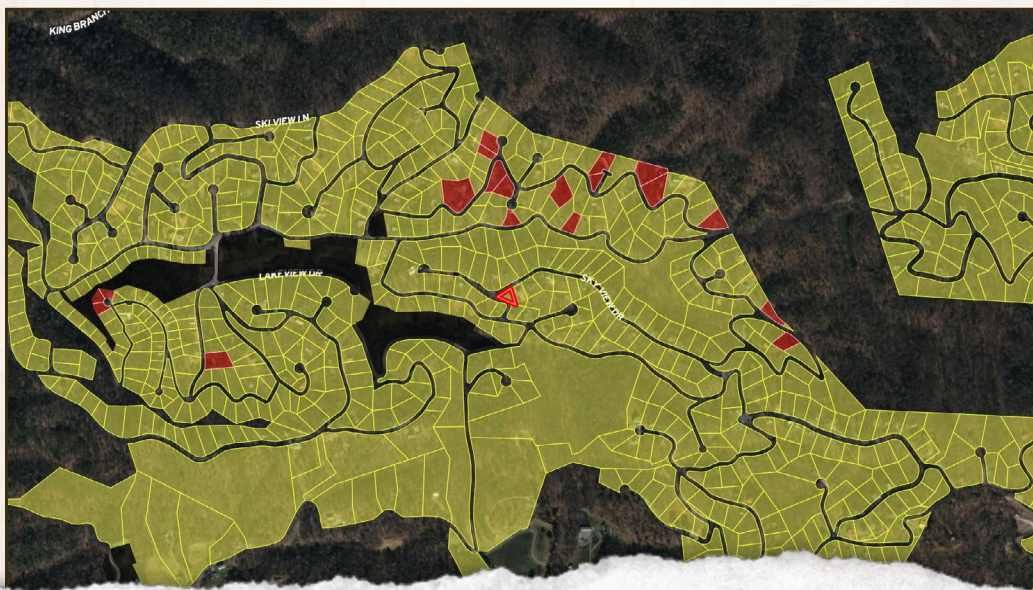
justin@smalltownproperties.com

P.O. Box 340 - Rocky Face, GA 30740

smalltownproperties.com

Information is believed to be accurate but not guaranteed.

0.32 ± ACRE LOT SEVIER COUNTY, TENNESSEE



SMALLTOWN
HUNTING PROPERTIES
& REAL ESTATESM

JUSTIN HASTY, ALC

ASSOCIATE BROKER

C: 706-671-4554

O: 478-382-2880

justin@smalltownproperties.com

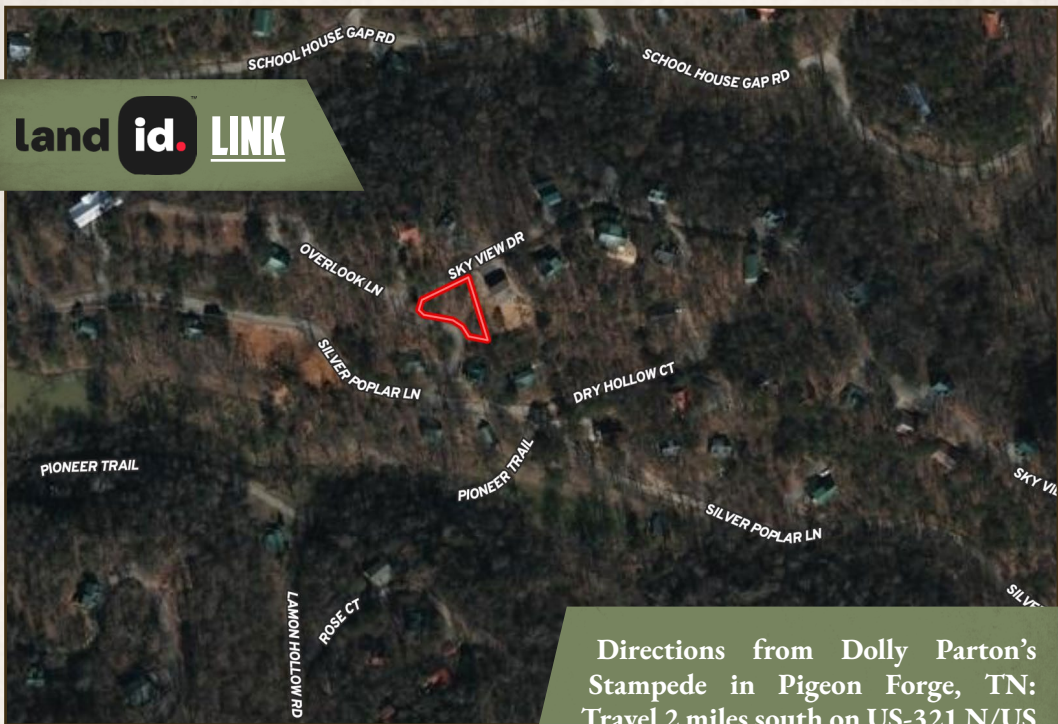
P.O. Box 340 - Rocky Face, GA 30740

smalltownproperties.com

Information is believed to be accurate but not guaranteed.

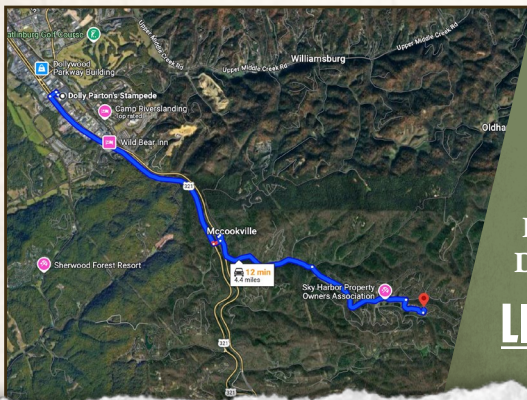
0.32 ± ACRE LOT SEVIER COUNTY, TENNESSEE

land id. LINK



Directions from Dolly Parton's Stampede in Pigeon Forge, TN: Travel 2 miles south on US-321 N/US 441S/Parkway. Turn left on Gum Stand Br. and then left again on US-321 S/US-441. Turn right on Gnatty Branch Road and take another right on King Branch Road. In 1.0 mile, turn right on Silver Poplar Lane. Stay on Silver Poplar until you turn left on Sky View Drive. The sign is on the property.

[LINK TO GOOGLE MAP DIRECTIONS](#)



SMALLTOWN
HUNTING PROPERTIES
& REAL ESTATESM

JUSTIN HASTY, ALC

ASSOCIATE BROKER

C: 706-671-4554

O: 478-382-2880

justin@smalltownproperties.com

P.O. Box 340 - Rocky Face, GA 30740

smalltownproperties.com

Information is believed to be accurate but not guaranteed.

