

Move-In Ready Home

802 Farmer Street, Cleveland, MS 38732



\$144,000

This charming, updated three-bedroom, two-bathroom home Bolivar County home is move-in ready! Recent upgrades include fresh interior and exterior paint, new flooring, and windows. Offering 1,708+/- SF of living space, the layout features a cozy sitting room and foyer upon entry. Two bedrooms and a bathroom are to the left, while the primary suite is privately located on the other side of the living room and kitchen. The backyard, complete with a chain-link fence, is perfect for pets. To see this updated home for yourself, call Abby to schedule your private showing!



ABBY
ABERNATHY
REALTOR®

Office: 662.441.2500

Cell: 940.781.3137

Abby@TomSmithLand.com



Expect More. Get More.

A Real Estate Expert You Can Trust

TomSmithLandandHomes.com

Information is believed to be accurate but not guaranteed.





3 Bedrooms
2 Bathrooms
1,708+/- SF
Updated Flooring
New Exterior & Interior Paint
Chain Link Fence



A Real Estate Expert
You Can Trust!

ABBY ABERNATHY
REALTOR®

O: 662.441.2500 C: 940.781.3137

Abby@TomSmithLand.com

TomSmithLandandHomes.com

Tom Smith
LAND AND HOMES

Expect More. Get More.

2011-2024
BEST
BROKERAGES

Information is believed to be accurate but not guaranteed.



*A Real Estate Expert
You Can Trust!*

ABBY ABERNATHY
REALTOR®

O: 662.441.2500 C: 940.781.3137

Abby@TomSmithLand.com

TomSmithLandandHomes.com

**Tom
Smith
LAND AND
HOMES**

Expect More. Get More.

Line Report
2011-2024
BEST
BROKERAGES

Information is believed to be accurate but not guaranteed.



A Real Estate Expert
You Can Trust!

ABBY ABERNATHY
REALTOR®

O: 662.441.2500 C: 940.781.3137

Abby@TomSmithLand.com

TomSmithLandandHomes.com

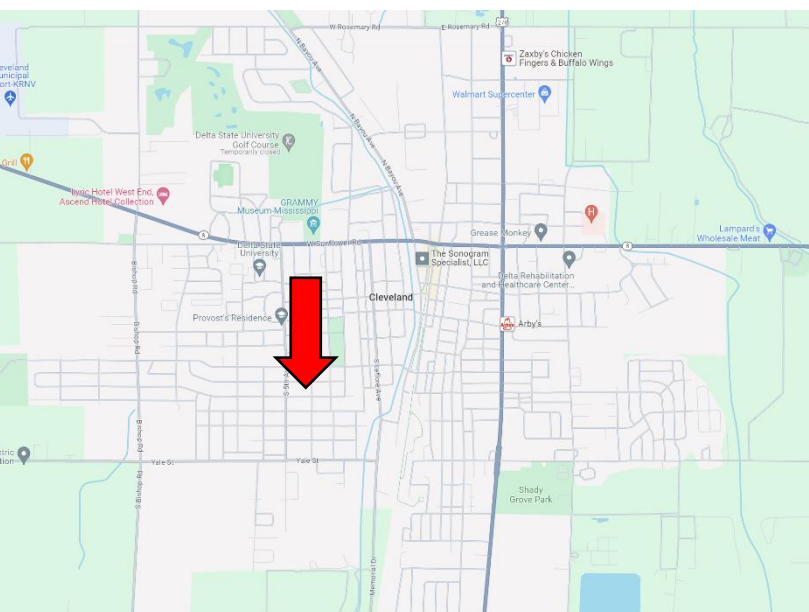
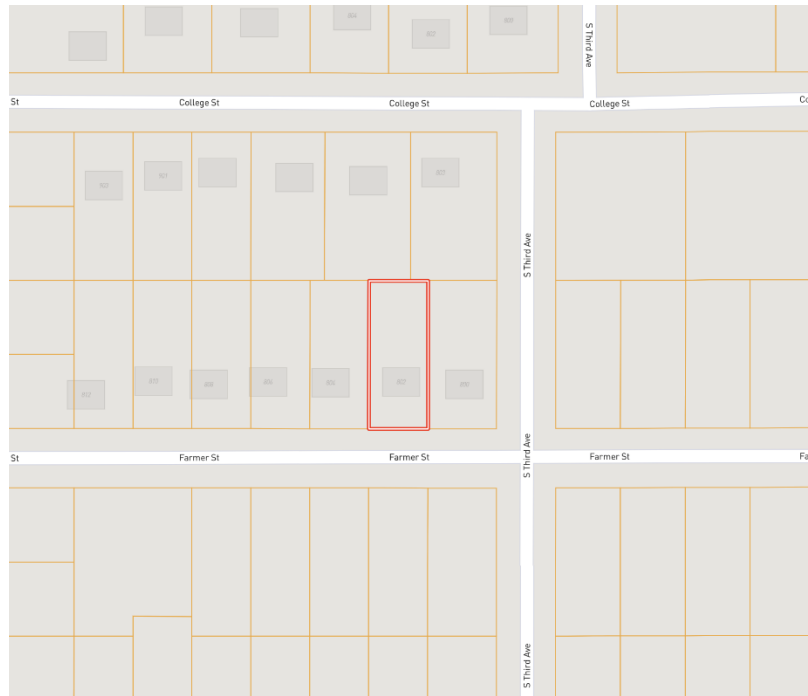
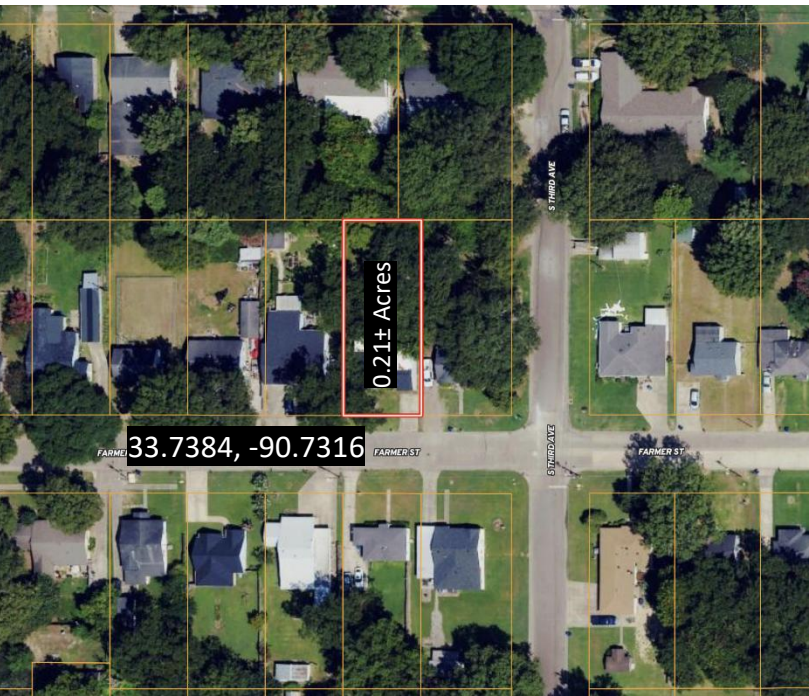


Expect More. Get More.



Information is believed to be accurate but not guaranteed.

MAPS | [Click for Interactive Map](#)



**Address: 802 Farmer Street,
Cleveland, MS 338732**

**Directions from Hwy 8 & Hwy 61 in
Cleveland, MS:** Travel west on Hwy 8 for one
mile. Turn left onto N. Fifth Avenue and travel
0.6 miles. Turn left onto Farmer Street. After 0.1
mile, the home will be on the left. [Click for
Google Maps.](#)



**ABBY
ABERNATHY**
REALTOR®

Office: 662.441.2500
Cell: 940.781.3137
Abby@TomSmithLand.com



Expect More. Get More.

A Real Estate Expert You Can Trust

TomSmithLandandHomes.com

Information is believed to be accurate but not guaranteed.

