

LAKE WASHINGTON RETREAT



331 Lake Washington Road, Glen Allan, MS 38744

\$352,000

- Washington County, MS
- 1,875 SF Lakefront Home
- 0.92± Acre Lot
- Private Pier
- Attached Garage
- Separate Unfinished Guest House



**BRUCE
WEST**

ALC®, ASSOCIATE BROKER
ACCREDITED LAND CONSULTANT

Office: 662.441.2500

Cell: 662.873.3007

Bruce@TomSmithLand.com



Expect More. Get More.

A Real Estate Expert You Can Trust

TomSmithLandandHomes.com

Information is believed to be accurate but not guaranteed.





Discover the perfect lakeside retreat with this 1,875 sq. ft. home on the stunning shores of Lake Washington. This lakehouse was designed for relaxation and entertaining, featuring an open-concept kitchen, a cozy fireplace, and floor-to-ceiling sliding glass doors offering breathtaking water views.

The home features LVT flooring throughout, ensuring easy maintenance. The spacious kitchen is fully equipped with appliances, making it ideal for preparing meals for family and guests. The large primary bedroom includes a private bath, complemented by a second bedroom and a bunkroom for additional accommodations.

Outside, enjoy the convenience of an attached garage with an automatic door opener. Behind the main house, a separate guest house presents an opportunity for expansion, awaiting your finishing touches.

Step out onto the private pier, which winds through majestic cypress trees. It leads to a deck perfect for fishing, relaxing, or enjoying a refreshing drink. The dock provides a secure spot for your boat, making lake life effortless and enjoyable. This is a rare opportunity to own a peaceful retreat on Lake Washington—call Bruce to schedule your showing today!

A Real Estate Expert *You Can Trust!*

BRUCE WEST

ALC®, ASSOCIATE BROKER
ACCREDITED LAND CONSULTANT

O: 662.441.2500 C: 662.873.3007

Bruce@TomSmithLand.com

TomSmithLandandHomes.com



Expect More. Get More.

Information is believed to be accurate but not guaranteed.





A Real Estate Expert You Can Trust!

BRUCE WEST

ALC®, ASSOCIATE BROKER
ACCREDITED LAND CONSULTANT

O: 662.441.2500 C: 662.873.3007

Bruce@TomSmithLand.com

TomSmithLandandHomes.com



Expect More. Get More.



Information is believed to be accurate but not guaranteed.



A Real Estate Expert You Can Trust!

BRUCE WEST

ALC®, ASSOCIATE BROKER
ACCREDITED LAND CONSULTANT

O: 662.441.2500 C: 662.873.3007

Bruce@TomSmithLand.com

TomSmithLandandHomes.com



Expect More. Get More.



Information is believed to be accurate but not guaranteed.



A Real Estate Expert
You Can Trust!

BRUCE WEST

ALC®, ASSOCIATE BROKER
ACCREDITED LAND CONSULTANT

O: 662.441.2500 C: 662.873.3007

Bruce@TomSmithLand.com

TomSmithLandandHomes.com



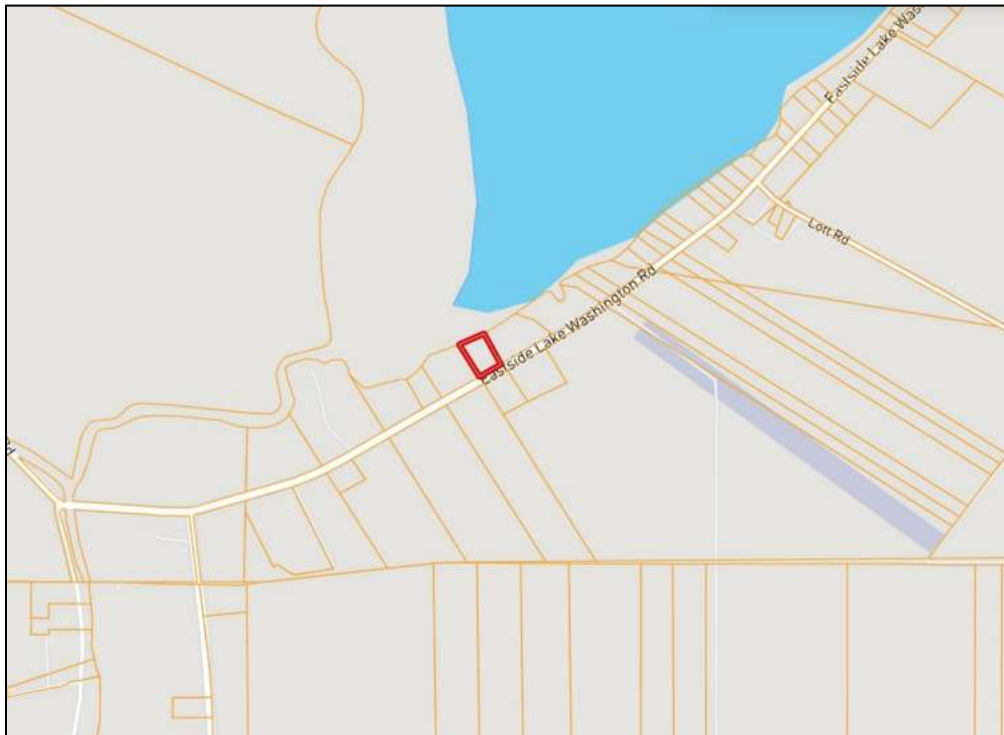
Expect More. Get More.



Information is believed to be accurate but not guaranteed.



Aerial Map



Ownership Map



Click Here for the
LandID Interactive
Map Link

A Real Estate Expert
You Can Trust!

BRUCE WEST

ALC®, ASSOCIATE BROKER
ACCREDITED LAND CONSULTANT

O: 662.441.2500 C: 662.873.3007

Bruce@TomSmithLand.com

TomSmithLandandHomes.com

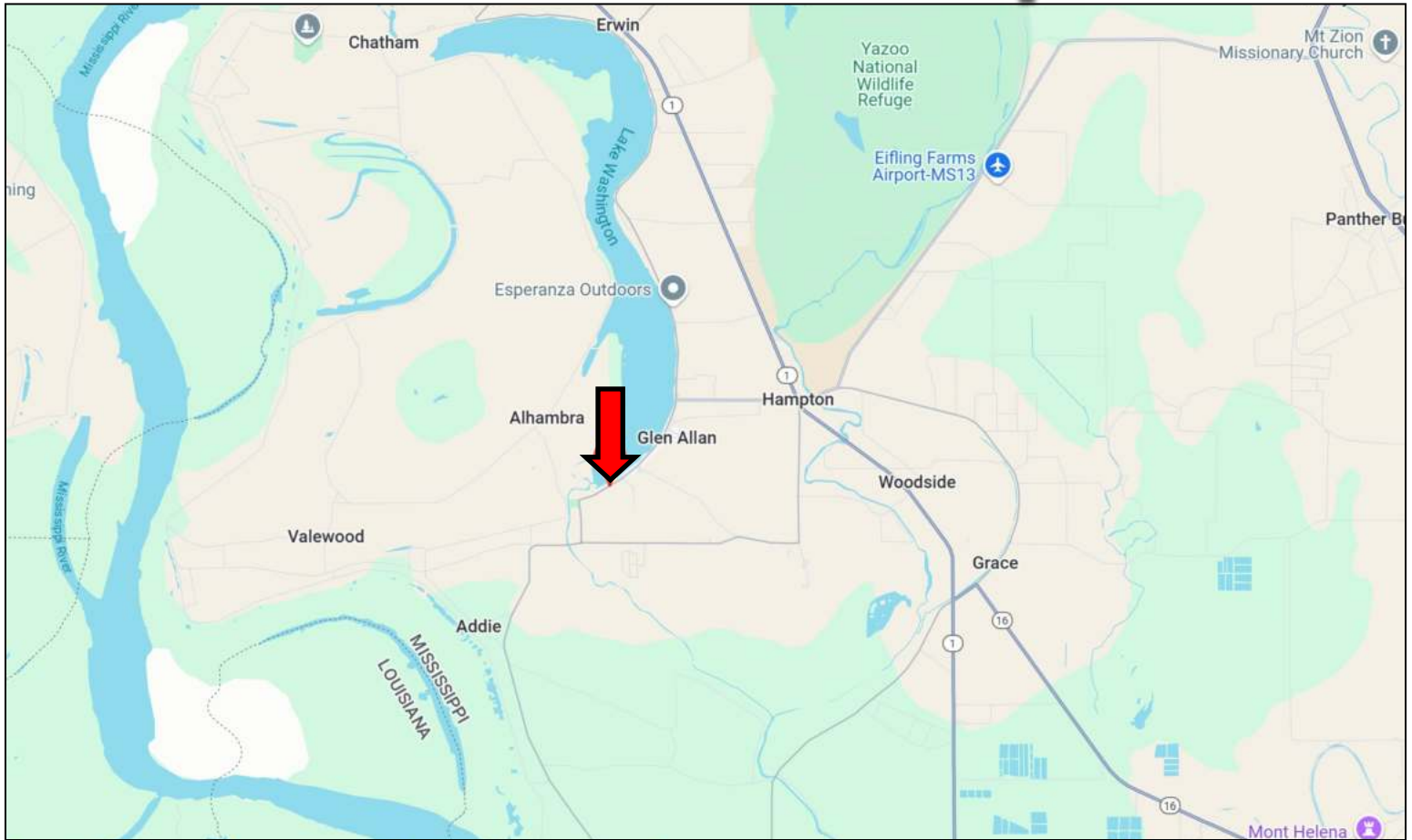


Expect More. Get More.



Information is believed to be accurate but not guaranteed.

Directional Map



Directions from the intersection of Hwy 1 and Hwy 436 in Glen Allan, MS: Turn onto Hwy 436W and travel 1.6 miles. Turn left onto Lake Washington Road E. After 1.5 miles, the property will be on the right.

331 Lake Washington Road, Glen Allan, MS 38744 — [Google Map Link](#)



**BRUCE
WEST**

ALC®, ASSOCIATE BROKER
ACCREDITED LAND CONSULTANT

Office: 662.441.2500

Cell: 662.873.3007

Bruce@TomSmithLand.com



Expect More. Get More.

A Real Estate Expert You Can Trust

TomSmithLandandHomes.com

Information is believed to be accurate but not guaranteed.

