

**Colorado elk and mule deer hunting outfitting business
for sale**
00000 Backcountry Wilderness
Crawford, CO 81415

\$330,000
200± Acres
Delta County



Colorado elk and mule deer hunting outfitting business for sale Crawford, CO / Delta County

SUMMARY

Address

00000 Backcountry Wilderness

City, State Zip

Crawford, CO 81415

County

Delta County

Type

Hunting Land, Business Opportunity, Horse Property, Commercial, Recreational Land

Latitude / Longitude

38.8135 / -107.449

Acreage

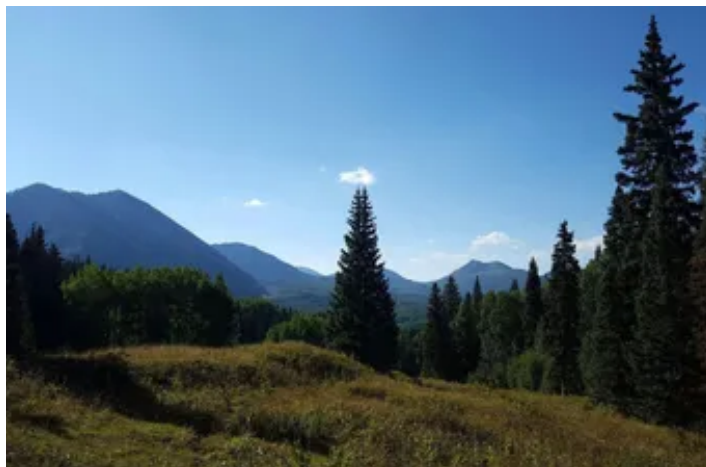
200

Price

\$330,000

Property Website

<https://aspenranchrealestate.com/property/colorado-elk-and-mule-deer-hunting-outfitting-business-for-sale-delta-colorado/110300/>



MORE INFO ONLINE:

<https://aspenranchrealestate.com/>

Colorado elk and mule deer hunting outfitting business for sale Crawford, CO / Delta County

PROPERTY DESCRIPTION

Colorado Elk and Mule Deer Wilderness Outfitting with USFS and BLM Hunting Permits NO DEEDED LAND IS OFFERED WITH THIS SALE! SPECIAL USE PERMIT ONLY!

Elk Basin Outfitters, a well-respected Colorado outfitter offering guided elk and mule deer hunts, is now offered for sale. Based in Crawford, Colorado, the business has both US Forest Service and BLM special use permits to conduct guided hunts in the West Elk Wilderness in Colorado GMU 53 and on BLM lands in GMU 63 south of Crawford. For the past several years, the outfitter has concentrated on archery and muzzleloader hunts in September, totaling about 30 guided hunters a year, but the business could easily be configured for other options, such as drop camps or rifle hunts.

Colorado horseback guide service has excellent set of horses, tack, and camp gear

This outfitter has done an excellent job of providing top-quality camp gear, horses, and tack for their guided expeditions. We have sold more outfitting businesses than any other brokerage in the West, and trust us, this outfitter has a great set of equipment to work with. The tents are larger than most other outfitters', the saddles and packsaddles are good working tack, the panniers, coolers, stoves, and everything else is top-notch. In addition to an excellent set of camp gear and tack, the business comes with 14 horses, 10 mules, and a very serviceable 24-foot stock trailer.

4 camp locations plus late-season BLM hunts makes for a good book of business

This USFS permit comes with a total of 4 wilderness camp locations. The current outfitter has concentrated on fully guided archery and muzzleloader hunts out of the main base camp above Beaver Reservoir, taking about 30 hunters a year on trophy elk and mule deer hunts. However, it's possible to do drop camp hunts out of the other three camp locations, and it's also possible to book hunts for the first rifle season as well. Additionally, hunters can be booked for second, third, and fourth rifle season on the BLM land south of Crawford.

Excellent big game hunting for mule deer, elk, and bear in Colorado GMU 53 and 63

People who know Colorado big game hunting are aware that Colorado GMU's 53 and 63 offer excellent hunting for mule deer, elk, and bear. It usually takes 1-2 years to draw a buck tag and a hunter can normally draw every year or two for archery or muzzleloader hunts, plus second- and third-season rifle elk tags can be bought over the counter. The largest bull taken by this outfitter's hunters scored 364, while bucks scoring up to 180 and higher are elusive, but possible. Bears are well represented. This business also has the potential to do overnight pack trips and summer trail rides, and the potential to add additional user days for more activities is a very good possibility.

Exhibit A:

Elk Basin Outfitters Equipment List

- 14 horses
- 10 mules
- 28 riding saddles
- 20 pack saddles
- 25+ quality saddle blankets
- Halters, bridles for 24+ head of horses & mules
- Britching for pack string animals
- 8 cylinder heating stoves
- 4 cookstoves
- 28 sets of panniers
- 4 sets of large hay panniers
- (3) 16' x 30' tents
- 1 cook tent, 1 pack tent, 1 spare

MORE INFO ONLINE:

<https://aspenranchrealestate.com/>

(5) 16 x 20' tents, new
(1) 12' x 12' cook tent
Every tent has a rain fly and a floor, complete with internal frames
1 shower tent
1 bathroom tent
25 cots
1 oven, 1 sink
10 large coolers
3 solar panels
Oven and shower heater
First aid kits
2010 Four seater 800 cc Polaris Razr
2000 Polaris ATV
1998 Titan 24-foot Livestock trailer
4 camp locations

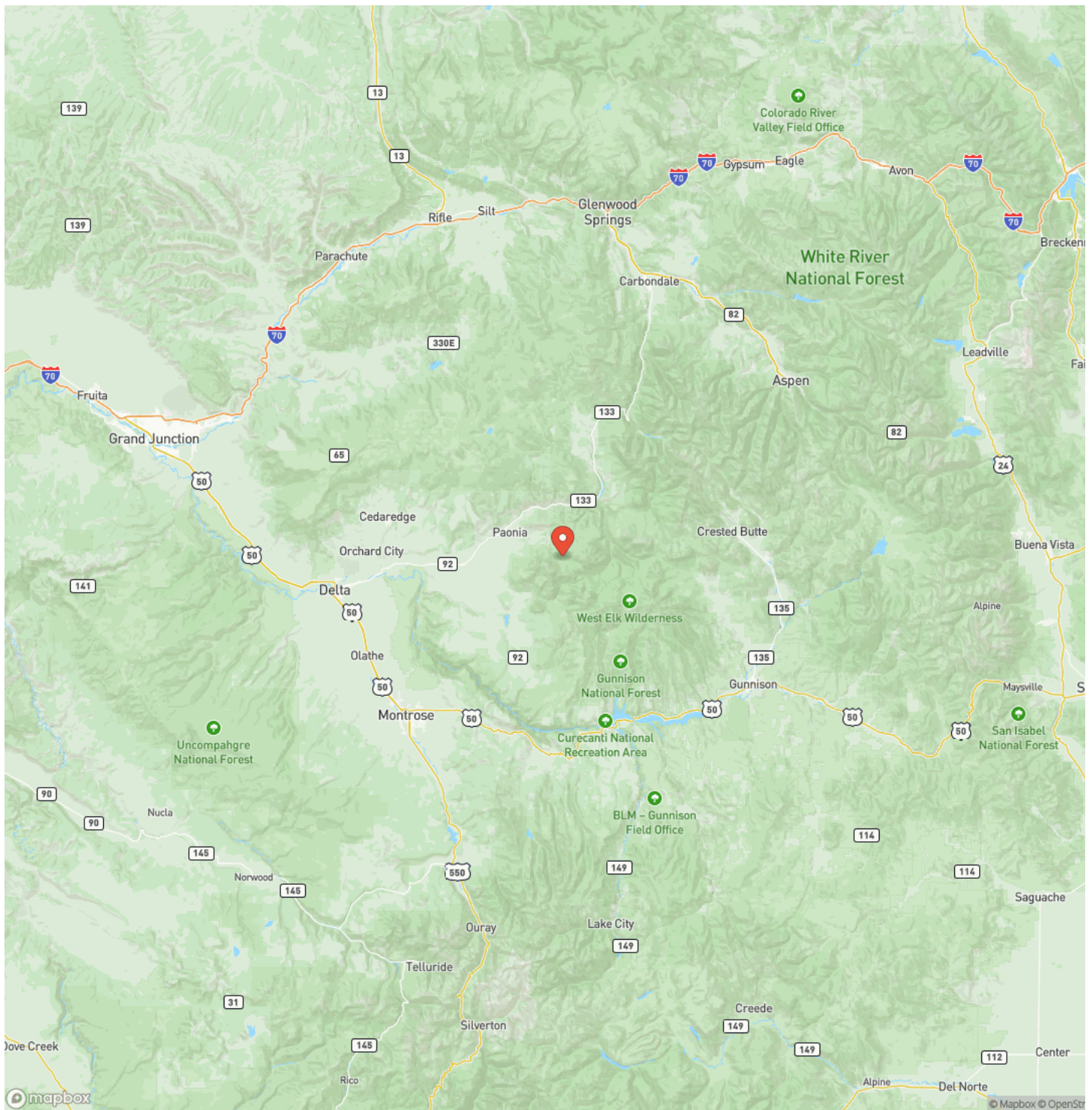
Colorado elk and mule deer hunting outfitting business for sale
Crawford, CO / Delta County



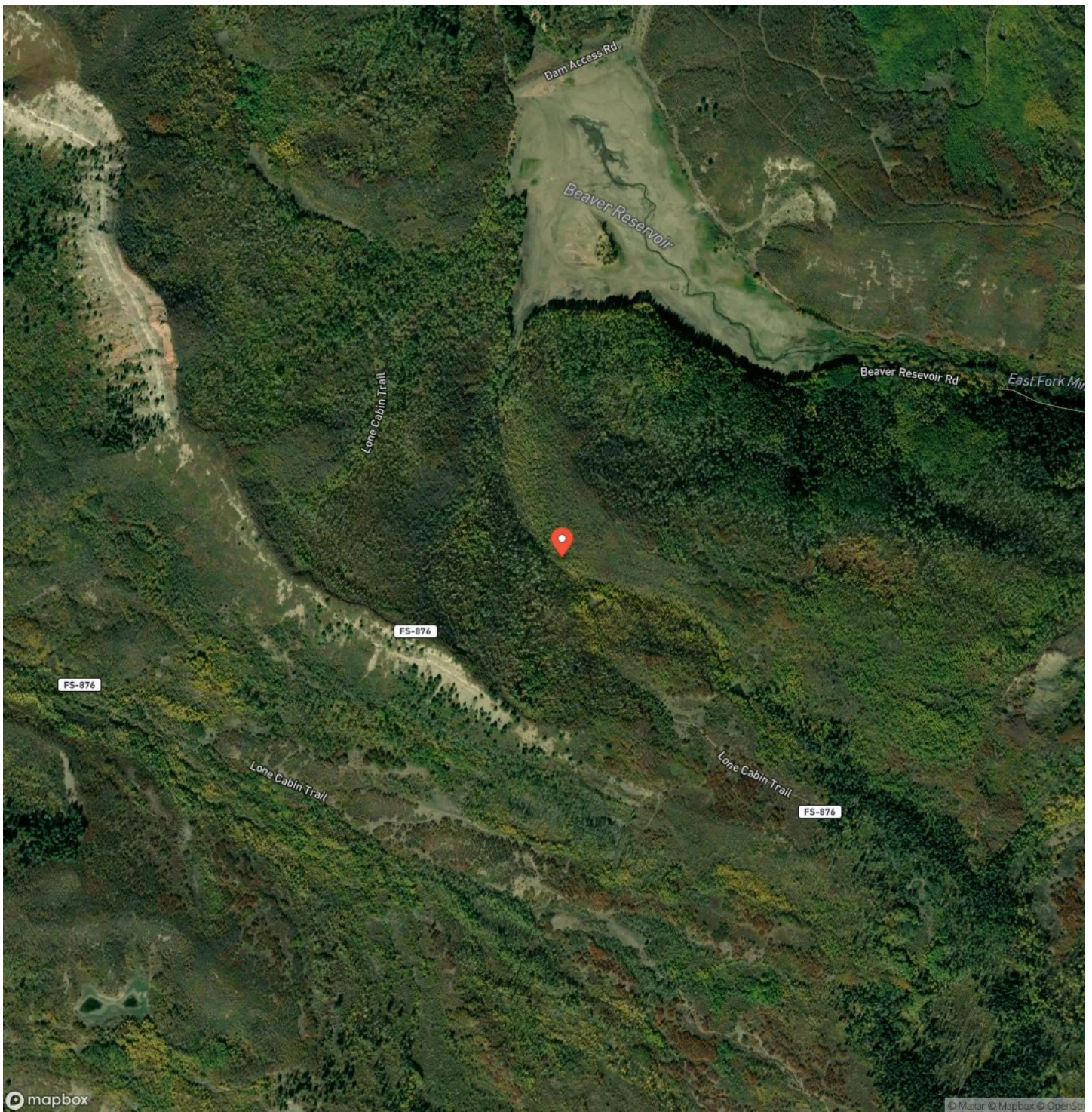
Locator Map



Locator Map



Satellite Map



DISCLAIMERS

Information in this brochure is provided solely for information purposes and does not constitute an offer to sell or advertise real estate outside the states in which broker or agent licensed. The information presented has been obtained from sources deemed to be reliable, but is not guaranteed or warranted by the agent, broker, or the sellers of these properties. This offering is subject to errors, omissions, prior sale, price change, correction or withdrawal from the market without notice. All references to age, square footage, income, expenses, acreage, carrying capacity, and land classification, etc. are approximate. Prospective buyers are chargeable with and expected to conduct their own independent investigation of the information and the property and to rely only on those results. Sellers reserve the right to accept or reject any and all offers without liability to any buyer or cooperating broker.

Maps are provided for illustration purposes only, the accuracy is not warranted. Parcels on interactive maps are not adjusted to match aerial backgrounds. This information is for reference purposes only and is not a legal document. Data maps contain errors. The seller and seller's agent are making known to all potential buyers that there may be variations between the location of the existing fence lines and the legal description of the deeded property. Seller and seller's agent make no warranties with regard to the location of the fence lines in relationship to the deeded property lines, nor does the Seller make any warranties or representations with regard to the specific acreage contained within the fenced property lines. Seller is selling the property in an "as is" condition, which includes the location of the fences as they exist. Boundaries shown on the accompanying maps are approximate, based on county parcel data. The maps are not to scale. The accuracy of the maps is not guaranteed. Prospective buyers are encouraged to verify fence lines, deeded property lines and acreages using a licensed surveyor at their own expense.

United Country Colorado Brokers
32145 L Road
Hotchkiss, CO 81419
(970) 250-9396
<https://aspenranchrealestate.com/>
