

WHITAKER ROAD

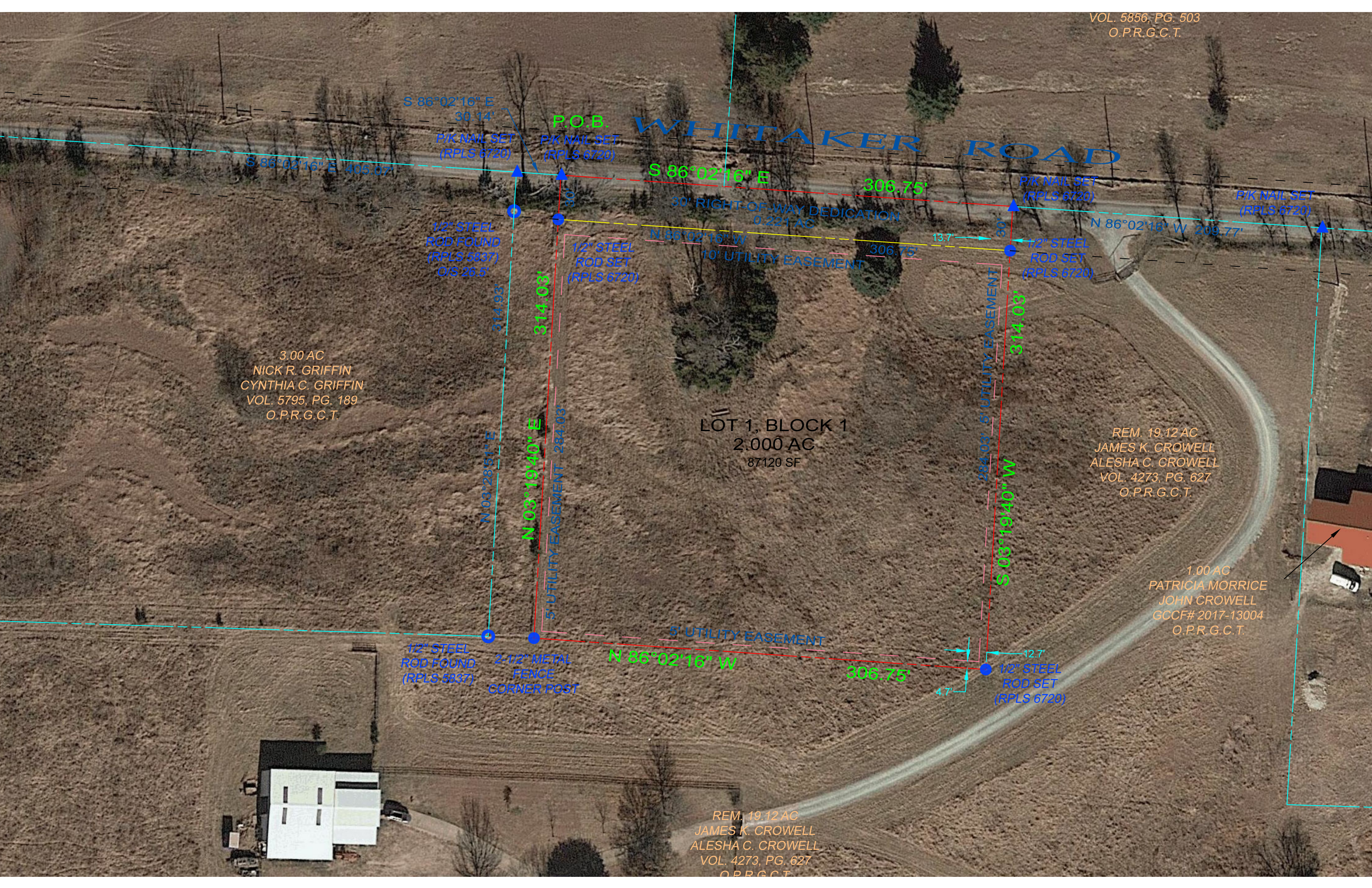
3.00 AC
NICK R. GRIFFIN
CYNTHIA C. GRIFFIN
VOL. 5795, PG. 189
O.P.R.G.C.T.

LOT 1, BLOCK 1
2.000 AC
87120 SF

REM. 19.12 AC
JAMES K. CROWELL
ALESHA C. CROWELL
VOL. 4273, PG. 627
O.P.R.G.C.T.

1.00 AC
PATRICIA MORRICE
JOHN CROWELL
GCCF# 2017-13004
O.P.R.G.C.T.

REM. 19.12 AC
JAMES K. CROWELL
ALESHA C. CROWELL
VOL. 4273, PG. 627
O.P.R.G.C.T.



S 86°02'16" E
30.14'
P/K NAIL SET
(RPLS 6720)

P.O.B.
P/K NAIL SET
(RPLS 6720)

S 86°02'16" E
306.75'

P/K NAIL SET
(RPLS 6720)

P/K NAIL SET
(RPLS 6720)

S 86°02'16" E 405.07'

1/2" STEEL
ROD FOUND
(RPLS 5837)
O/S 26.5'

1/2" STEEL
ROD SET
(RPLS 6720)

30' RIGHT-OF-WAY DEDICATION
0.221 AC

N 86°02'16" W
306.75'

1/2" STEEL
ROD SET
(RPLS 6720)

N 86°02'16" W 209.77'

314.03'

N 03°19'40" E
314.03'

5' UTILITY EASEMENT 284.03'

N 03°28'51" E
314.92'

10' UTILITY EASEMENT

13.7'

5' UTILITY EASEMENT
284.03'

314.03'

S 03°19'40" W
314.03'

5' UTILITY EASEMENT

N 86°02'16" W
306.75'

1/2" STEEL
ROD FOUND
(RPLS 5837)

2-1/2" METAL
FENCE
CORNER POST

1/2" STEEL
ROD SET
(RPLS 6720)

12.7'

4.7'