

# Hunting or Country Retreat

**30± ACRES IN ATTALA COUNTY, MS • \$75,000**



Located off Attala Road 5001 in the Zama community of Attala County, this 30± acre tract sits in the heart of central Mississippi, just 18 miles from Kosciusko, Carthage, Philadelphia, and Louisville. Highways 25 and 19 are both nearby, offering easy access in all directions. The 6-year-old natural regrowth is regenerating, with strong habitat for deer and turkey. With road frontage, water available through Zama Water Association, and electricity through Central EPA, it's a great setup for anyone looking to get out in the country. Whether you're after a hunting tract, a quiet hideaway, or a spot to build down the line, this one is worth a look. Additional acreage available!



**KRISTY  
INGOLD**  
REALTOR®

Office: 601.898.2772

Cell: 662.792.9949

Kristy@TomSmithLand.com



Expect More. Get More.

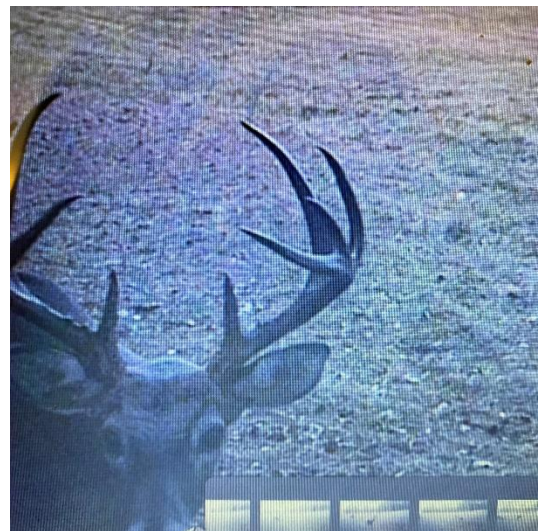
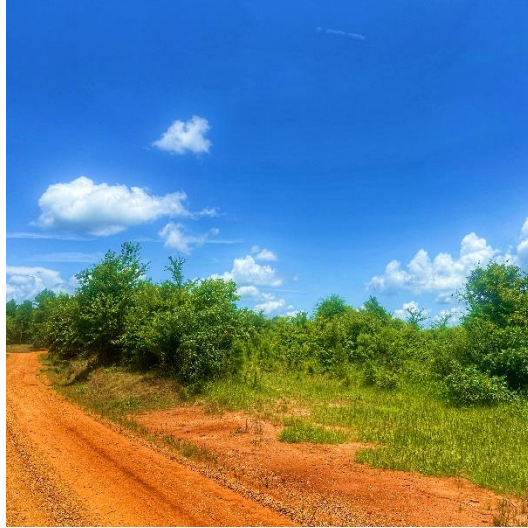
**A Real Estate Expert You Can Trust**

TomSmithLandandHomes.com

Information is believed to be accurate but not guaranteed.







**A Real Estate Expert**  
*You Can Trust!*

**KRISTY INGOLD**  
REALTOR®

O: 601.898.2772 C: 662.792.9949

Kristy@TomSmithLand.com

TomSmithLandandHomes.com

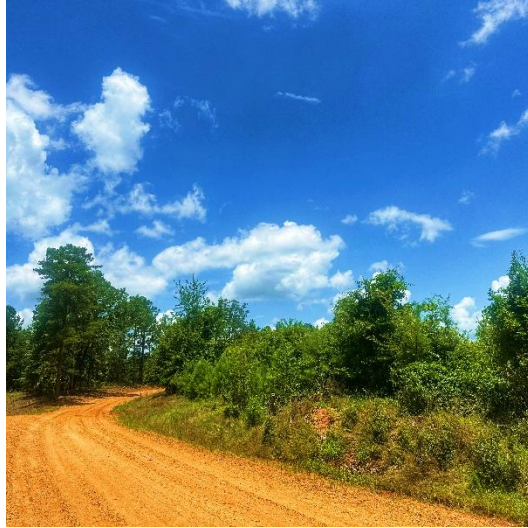


Expect More. Get More.



Information is believed to be accurate but not guaranteed.





**A Real Estate Expert**  
*You Can Trust!*

**KRISTY INGOLD**  
REALTOR®

O: 601.898.2772 C: 662.792.9949

Kristy@TomSmithLand.com

TomSmithLandandHomes.com

**Tom  
Smith  
LAND AND  
HOMES**

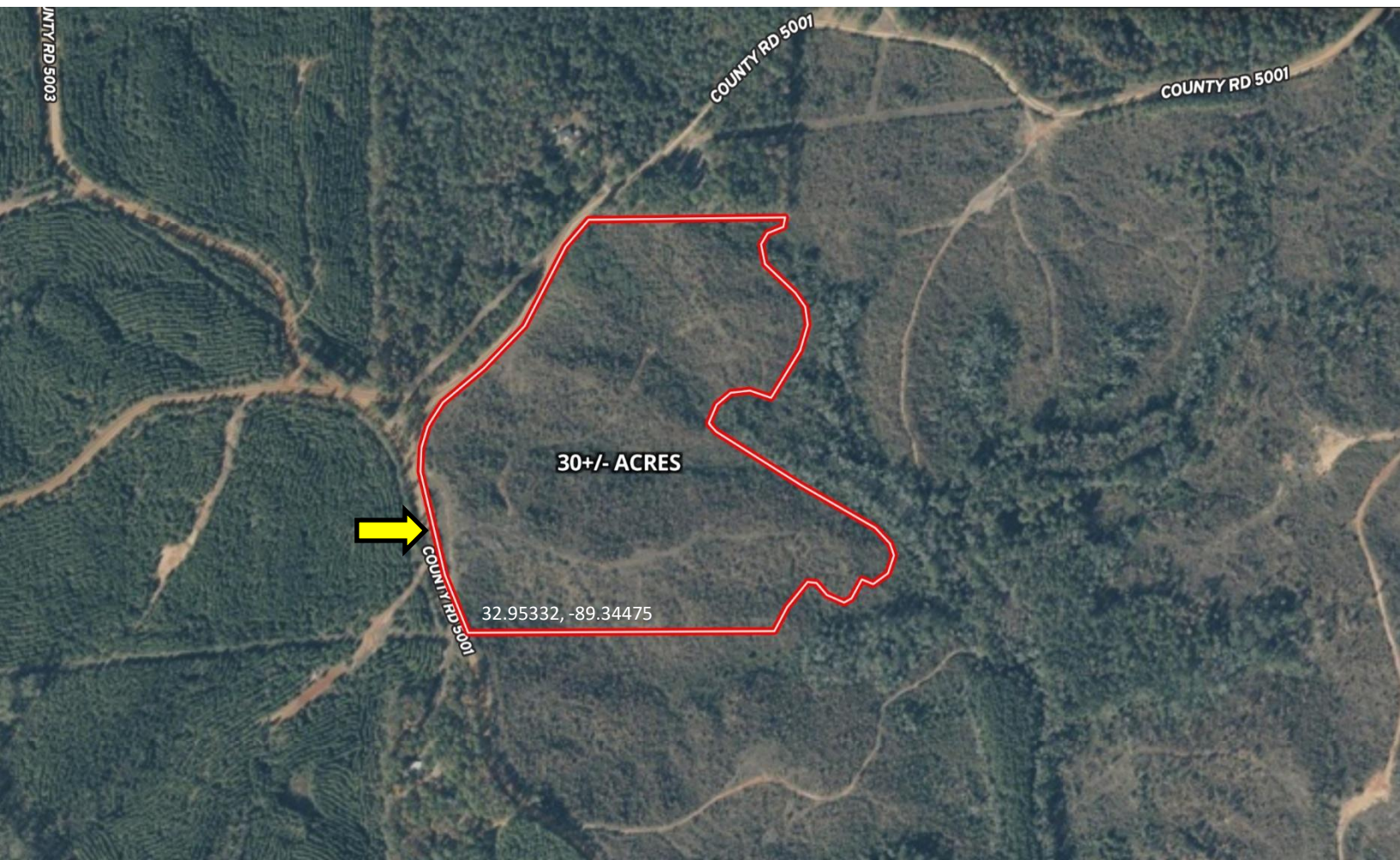
Expect More. Get More.

2011-2024  
AMERICAN  
**BEST**  
BROKERAGES

Information is believed to be accurate but not guaranteed.



# AERIAL MAP



[Click Here for the Interactive Map Link](#)

**A Real Estate Expert**  
*You Can Trust!*

**KRISTY INGOLD**  
REALTOR®

O: 601.898.2772 C: 662.792.9949

Kristy@TomSmithLand.com

TomSmithLandandHomes.com

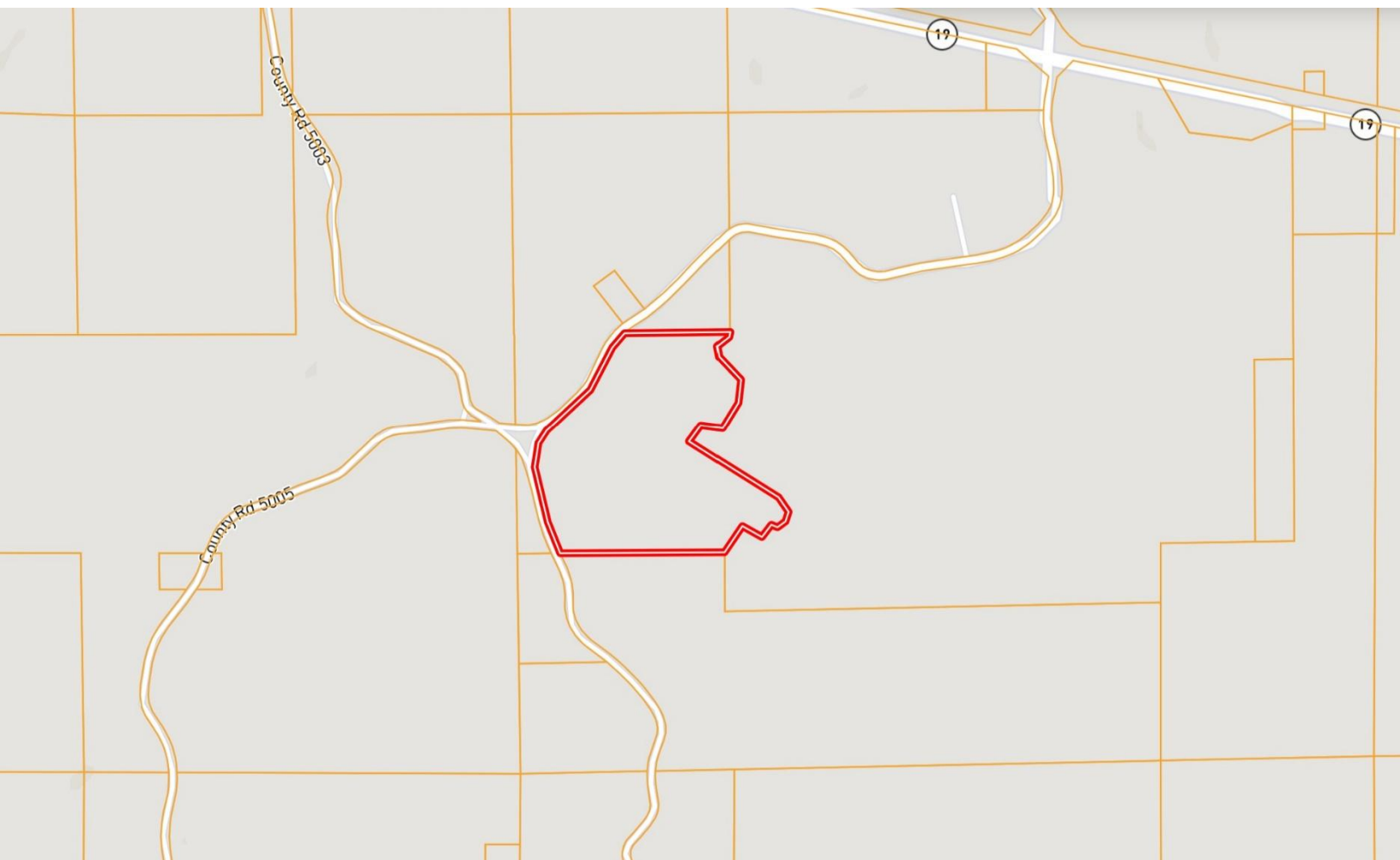


Expect More. Get More.

Information is believed to be accurate but not guaranteed.



# OWNERSHIP MAP



**A Real Estate Expert**  
*You Can Trust!*

**KRISTY INGOLD**  
REALTOR®

O: 601.898.2772 C: 662.792.9949

Kristy@TomSmithLand.com

TomSmithLandandHomes.com



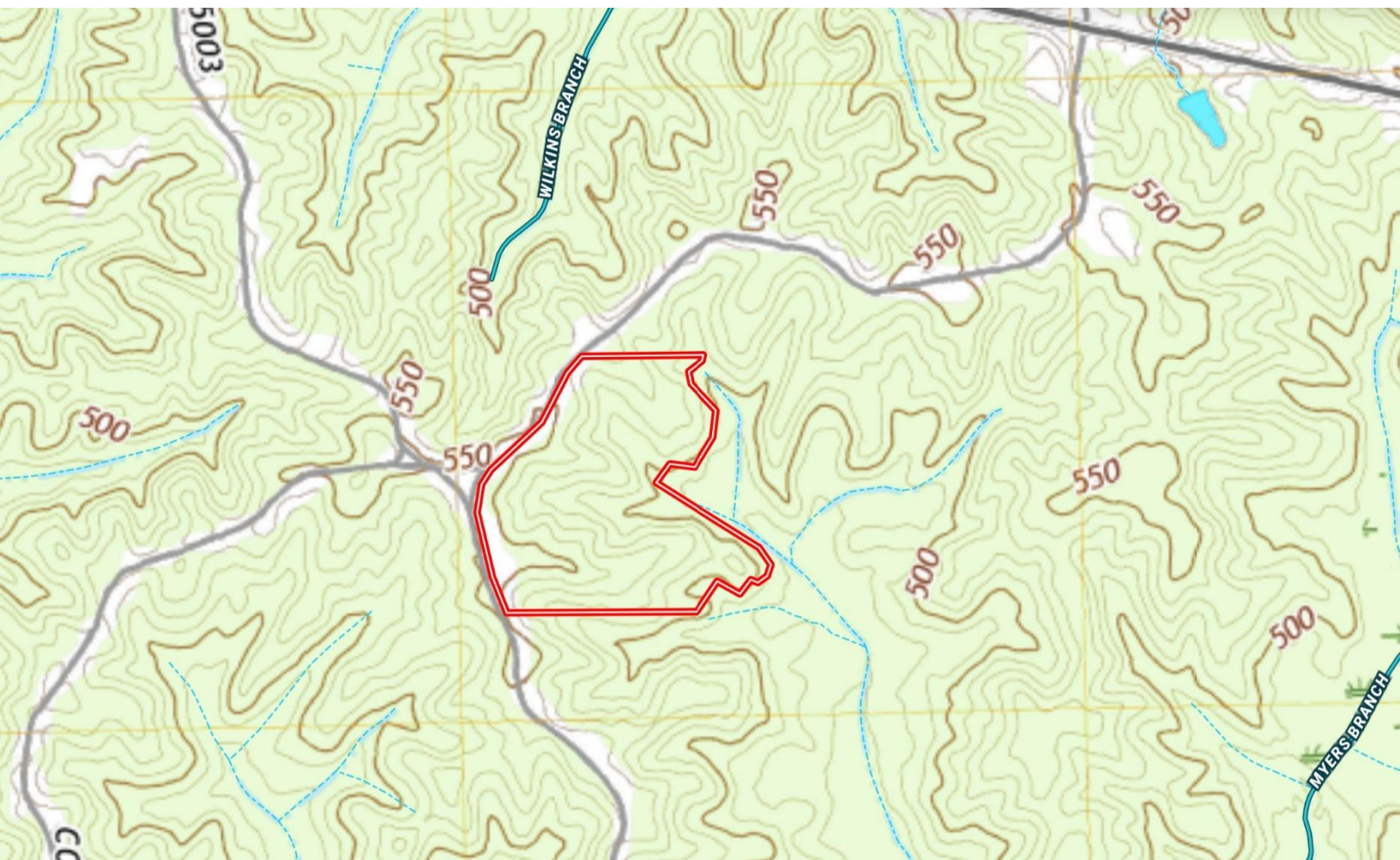
Expect More. Get More.

Information is believed to be accurate but not guaranteed.





# TOPOGRAPHY MAP



**A Real Estate Expert**  
*You Can Trust!*

**KRISTY INGOLD**  
REALTOR®

O: 601.898.2772 C: 662.792.9949

Kristy@TomSmithLand.com

TomSmithLandandHomes.com



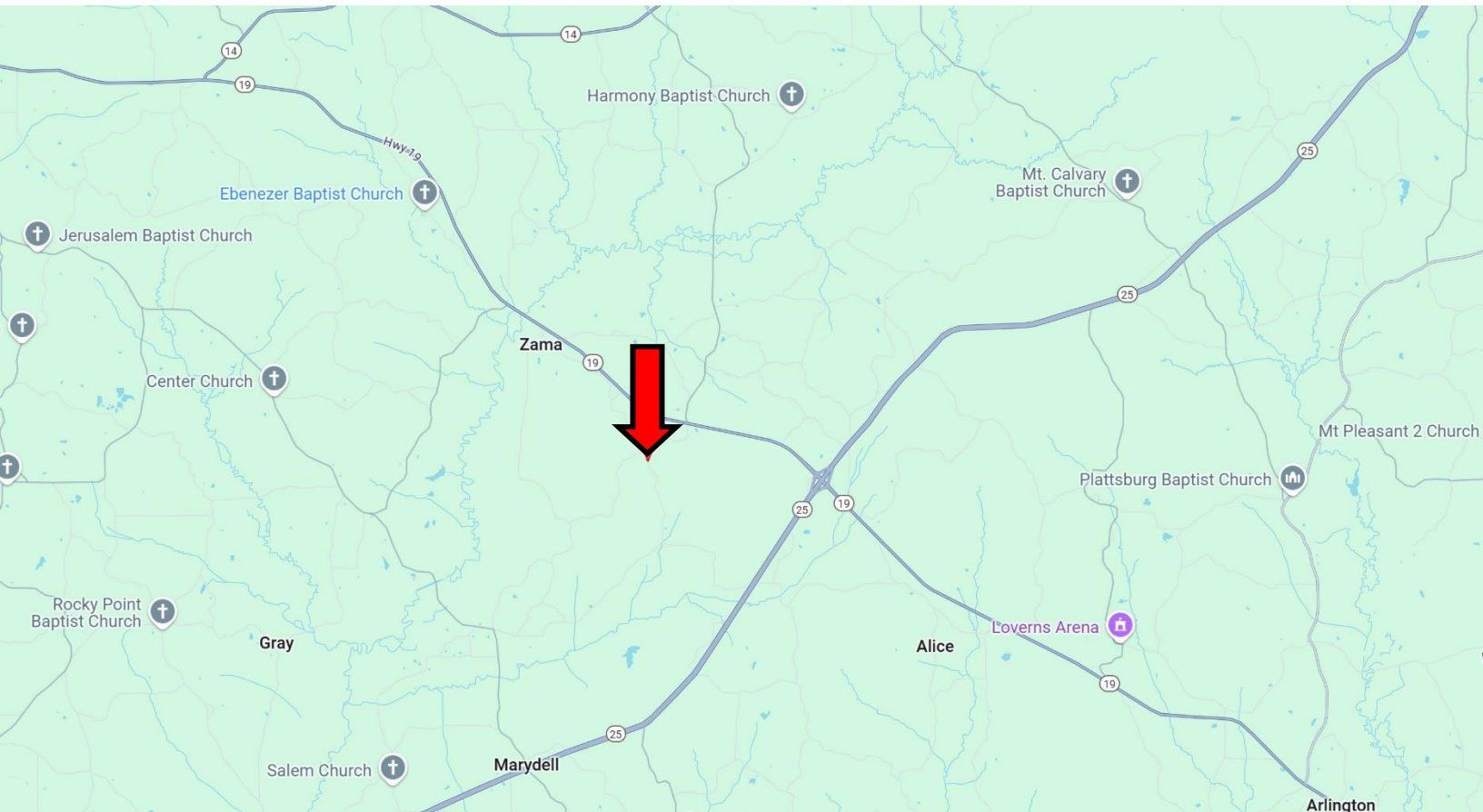
Expect More. Get More.

Information is believed to be accurate but not guaranteed.





# DIRECTIONAL MAP



Directions from the intersection of Hwy 25 and Hwy 19 in Carthage, MS: Take exit MS-19 towards Kosciusko/Philadelphia. Turn onto Hwy 19 and travel 2.4 miles. Turn left onto CR 5001 and travel 1 mile. Make a slight left onto Ridge Road. The property will be on your left. [GOOGLE MAP LINK](#)



**KRISTY  
INGOLD**  
REALTOR®

Office: 601.898.2772

Cell: 662.792.9949

Kristy@TomSmithLand.com



Expect More. Get More.

**A Real Estate Expert You Can Trust**

TomSmithLandandHomes.com

Information is believed to be accurate but not guaranteed.

