

HUNTING RETREAT

167.3± ACRES IN CARROLL COUNTY, MS



\$2,750/ACRE

Hunting season is here, and this 167.3± acre property in Carroll County, MS, is ready for you! As you enter, you'll find an open area ideal for building your getaway, with water and electricity available for convenience. About 25± acres damaged by a tornado have been replanted with pines, creating a perfect bedding area for wildlife. The remaining timber features a pine and hardwood mix, adding diversity to the landscape. A well-maintained road system guides you through the property, leading to several food plots and a powerline running in two directions, offering more planting opportunities. Deer and turkey signs are abundant, making this an excellent hunting destination. Call Bruce to schedule a tour today!



BRUCE WEST

ALC®, ASSOCIATE BROKER
ACCREDITED LAND CONSULTANT

Office: 662.441.2500
Cell: 662.873.3007

Bruce@TomSmithLand.com



Expect More. Get More.

A Real Estate Expert You Can Trust

TomSmithLandandHomes.com

Information is believed to be accurate but not guaranteed.





A Real Estate Expert *You Can Trust!*

BRUCE WEST

ALC®, ASSOCIATE BROKER
ACCREDITED LAND CONSULTANT

O: 662.441.2500 C: 662.873.3007

Bruce@TomSmithLand.com

TomSmithLandandHomes.com



Expect More. Get More.

Information is believed to be accurate but not guaranteed.





A Real Estate Expert *You Can Trust!*

BRUCE WEST

ALC®, ASSOCIATE BROKER
ACCREDITED LAND CONSULTANT

O: 662.441.2500 C: 662.873.3007

Bruce@TomSmithLand.com

TomSmithLandandHomes.com



Expect More. Get More.

Information is believed to be accurate but not guaranteed.





A Real Estate Expert *You Can Trust!*

BRUCE WEST

ALC®, ASSOCIATE BROKER
ACCREDITED LAND CONSULTANT

O: 662.441.2500 C: 662.873.3007

Bruce@TomSmithLand.com

TomSmithLandandHomes.com



Expect More. Get More.



Information is believed to be accurate but not guaranteed.

AERIAL MAP



[CLICK HERE FOR THE LANDID INTERACTIVE MAP](#)

A Real Estate Expert
You Can Trust!

BRUCE WEST

ALC®, ASSOCIATE BROKER
ACCREDITED LAND CONSULTANT

O: 662.441.2500 C: 662.873.3007

Bruce@TomSmithLand.com

TomSmithLandandHomes.com

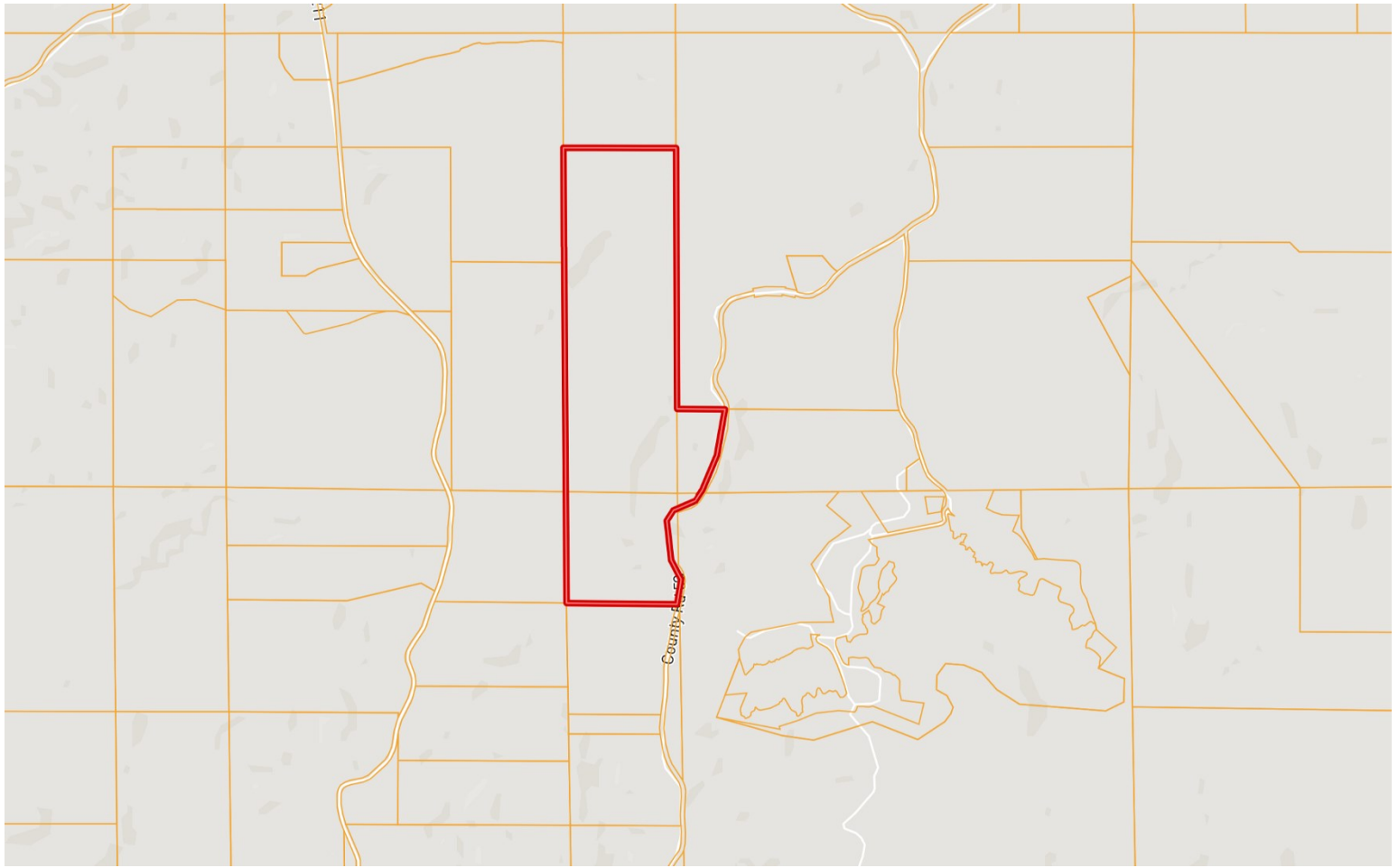


Expect More. Get More.



Information is believed to be accurate but not guaranteed.

OWNERSHIP MAP



A Real Estate Expert
You Can Trust!

BRUCE WEST

ALC®, ASSOCIATE BROKER
ACCREDITED LAND CONSULTANT

O: 662.441.2500 C: 662.873.3007

Bruce@TomSmithLand.com

TomSmithLandandHomes.com

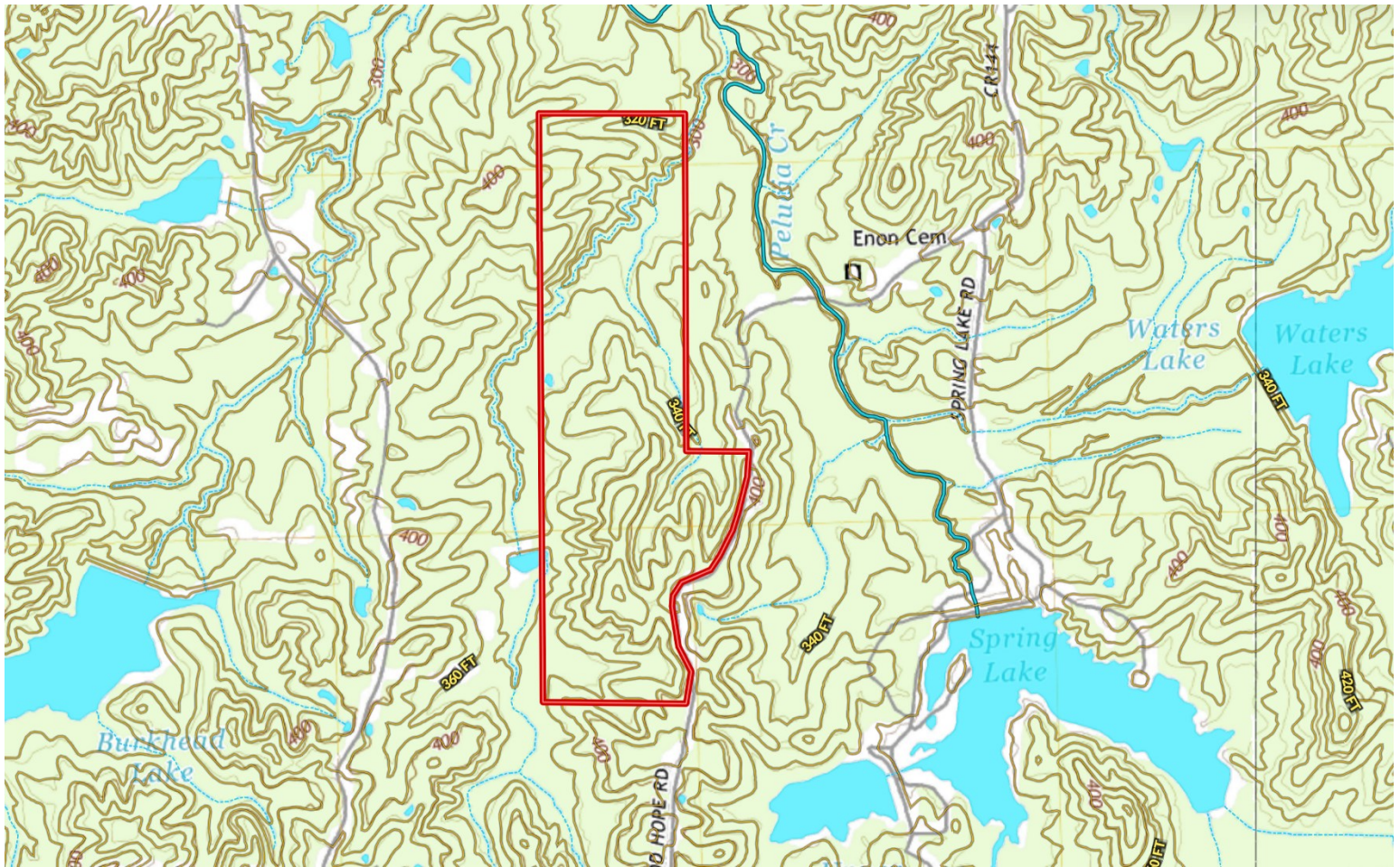


Expect More. Get More.

Information is believed to be accurate but not guaranteed.



TOPOGRAPHY MAP



A Real Estate Expert
You Can Trust!

BRUCE WEST

ALC®, ASSOCIATE BROKER
ACCREDITED LAND CONSULTANT

O: 662.441.2500 C: 662.873.3007

Bruce@TomSmithLand.com

TomSmithLandandHomes.com

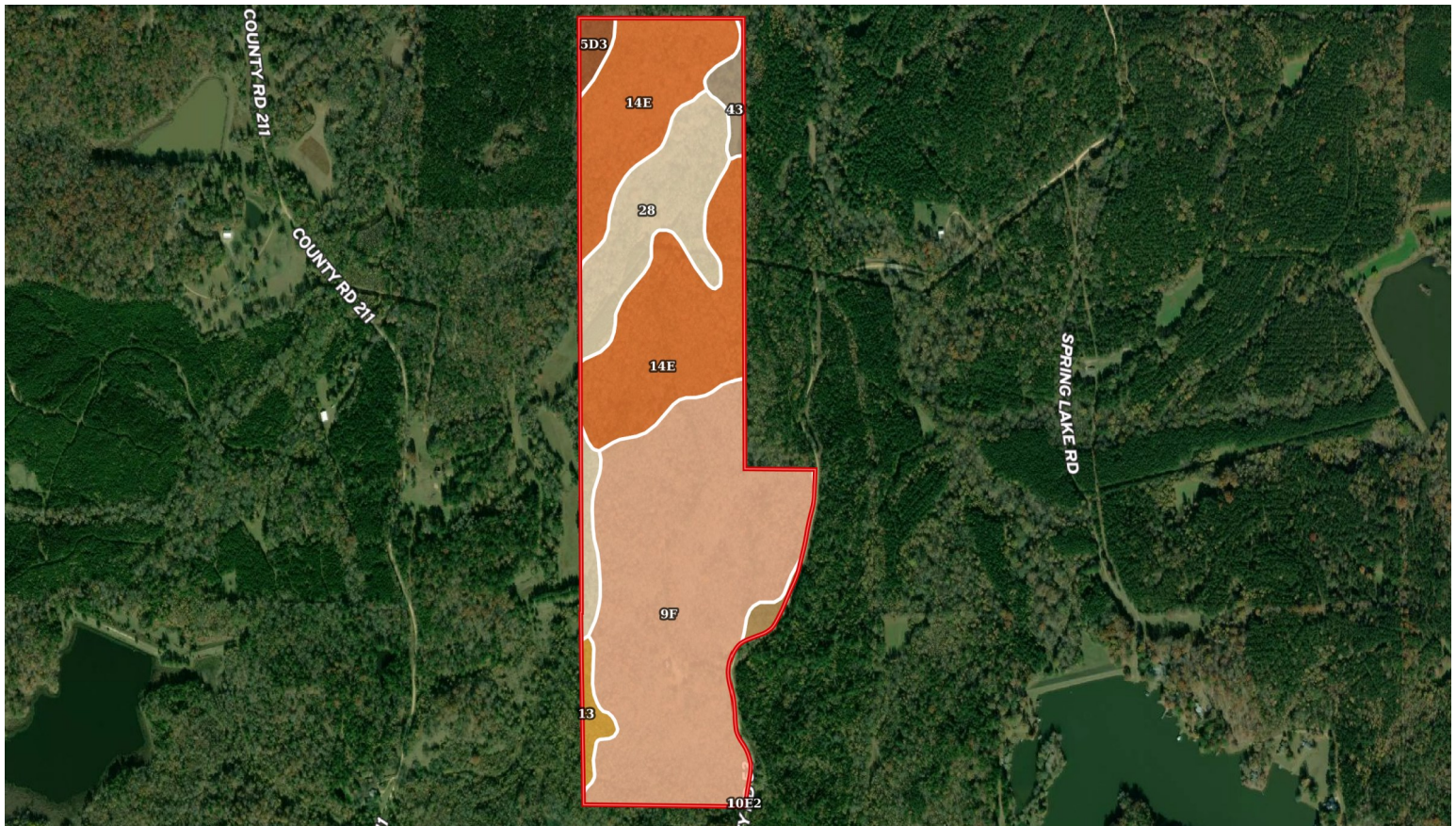


Expect More. Get More.

Information is believed to be accurate but not guaranteed.



SOIL MAP



SOIL CODE	SOIL DESCRIPTION	ACRES	%	CPI	NCCPI	CAP
9F	Smithdale-Providence-Lexington association, hilly	81.94	47.45	0	40	7e
14E	Maben-Memphis complex, 8 to 20 percent slopes	54.88	31.78	0	72	6e
28	Ariel silt, occasionally flooded	25.83	14.96	0	90	2w
43	Falaya silt, occasionally flooded	3.06	1.77	0	77	2w
13	Bruno sandy loam, occasionally flooded	2.95	1.71	0	39	3s
5D3	Loring silt loam, 8 to 12 percent slopes, severely eroded	2.41	1.4	0	41	6e
10E2	Smithdale sandy loam, 12 to 30 percent slopes, eroded	1.62	0.94	0	54	7e

A Real Estate Expert
You Can Trust!

BRUCE WEST

ALC®, ASSOCIATE BROKER
ACCREDITED LAND CONSULTANT

O: 662.441.2500 C: 662.873.3007

Bruce@TomSmithLand.com

TomSmithLandandHomes.com

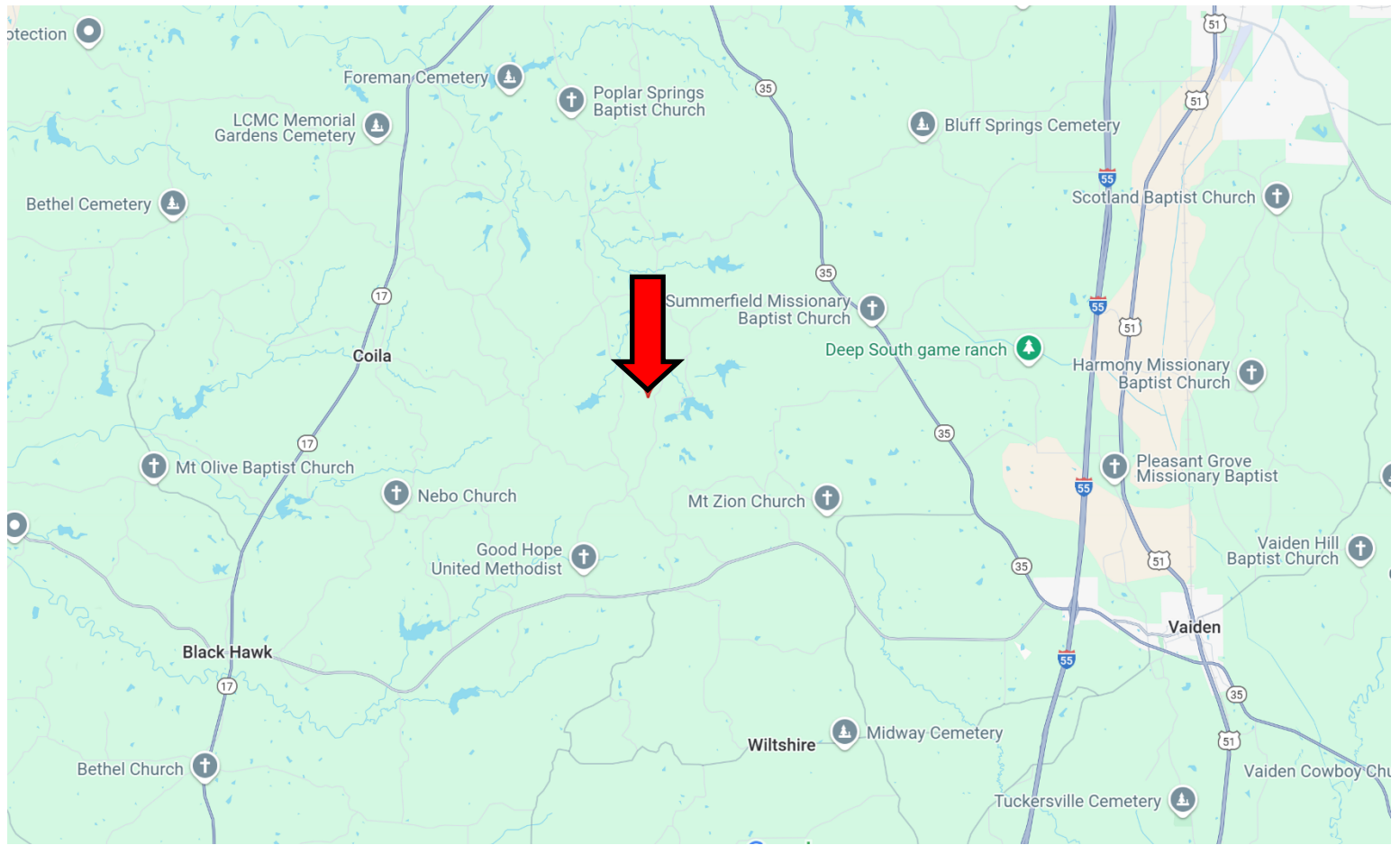


Expect More. Get More.



Information is believed to be accurate but not guaranteed.

DIRECTIONAL MAP



Directions from I-55 in Vaiden, MS: Take exit 174 for Vaiden. Turn onto Hwy 35N/Hwy 430W and travel 0.5 miles. Turn left onto Hwy 430 and travel 6.2 miles. Turn right onto CR 52 and travel 1.2 miles. Continue straight onto CR 211 and travel 1.1 miles. Turn right onto Good Hope Rd/CR 53. After 1.8 miles, the property entrance will be on the left.
8339 CR 53 CARROLTON, MS 38917 — Google Map Link



**BRUCE
WEST**

ALC®, ASSOCIATE BROKER
ACCREDITED LAND CONSULTANT

Office: 662.441.2500
Cell: 662.873.3007

Bruce@TomSmithLand.com



Expect More. Get More.

A Real Estate Expert You Can Trust

TomSmithLandandHomes.com

Information is believed to be accurate but not guaranteed.

