

000 HWY 73 & 9TH ST. WINNIE, TX 77665

CHAMBERS COUNTY

5.83± ACRES | \$525,000

GALVESTON



BEAUMONT

PORT ARTHUR



HIGHLIGHTS

- 5.83 acres — undeveloped commercial hard corner
- I-10 & Hwy 73 interchange, Winnie (Chambers County)
- ¾ mile from the I-10 exit ramp
- 650' service road frontage + 380' 9th Street frontage
- Water & sewer available; fiber optic service
- 138 KV transmission line across rear of property
- Federal Opportunity Zone
- Gateway to Bolivar/Crystal Beach beach traffic; Houston–Beaumont corridor



THE INFORMATION PROVIDED HEREIN IS BELIEVED TO BE ACCURATE BUT IS NOT GUARANTEED BY ANDRUS LAND GROUP. DETAILS ARE SUBJECT TO CHANGE AT ANY TIME WITHOUT NOTICE.

PROPERTY OVERVIEW.

A rare 5.83-acre undeveloped commercial hard corner at one of Southeast Texas's busiest crossroads — the Interstate 10 and State Highway 73 interchange in Winnie. Positioned within a federal Opportunity Zone with utilities and major infrastructure already in place, this tract delivers the interstate access, dual frontage, and visibility that travel-corridor and industrial users compete for along the Houston-to-Beaumont stretch of I-10.

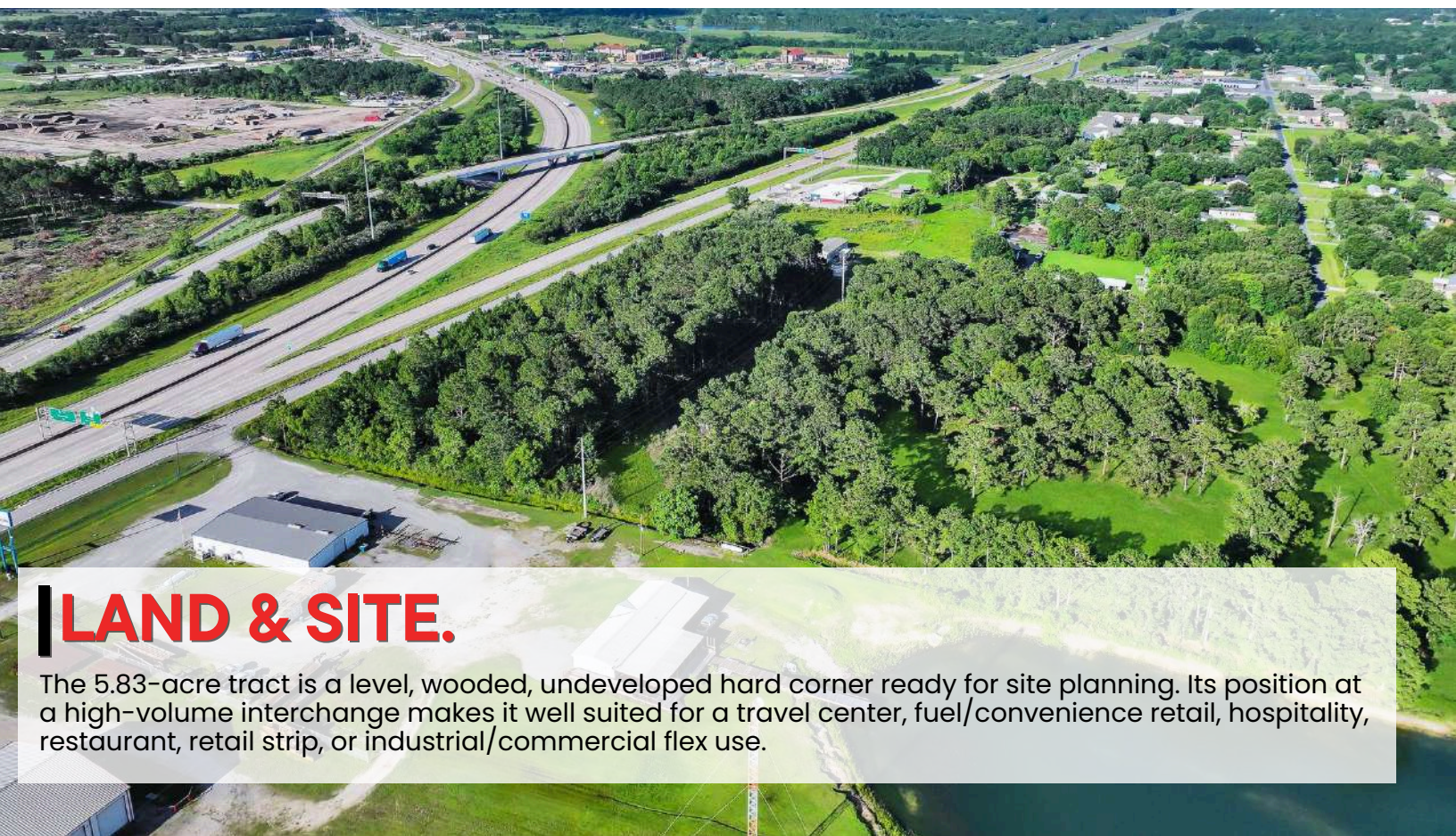
THE INFORMATION PROVIDED HEREIN IS BELIEVED TO BE ACCURATE BUT IS NOT GUARANTEED BY ANDRUS LAND GROUP. DETAILS ARE SUBJECT TO CHANGE AT ANY TIME WITHOUT NOTICE.



LOCATION & ACCESS.

Located just $\frac{3}{4}$ mile from the I-10 exit ramp at the Hwy 73 interchange, the property sits at the gateway between Houston (≈ 60 miles west) and Beaumont (≈ 25 miles east), and at the northern entry to the Hwy 73 corridor toward Port Arthur and Mid-County. Winnie is also the primary stop for beach traffic heading to the Bolivar Peninsula and Crystal Beach, driving steady year-round and seasonal volume. The corner configuration offers 650' of service road frontage and 380' of 9th Street frontage, supporting flexible site planning, multiple access points, and premium signage exposure to interstate traffic.

THE INFORMATION PROVIDED HEREIN IS BELIEVED TO BE ACCURATE BUT IS NOT GUARANTEED BY ANDRUS LAND GROUP. DETAILS ARE SUBJECT TO CHANGE AT ANY TIME WITHOUT NOTICE.



LAND & SITE.

The 5.83-acre tract is a level, wooded, undeveloped hard corner ready for site planning. Its position at a high-volume interchange makes it well suited for a travel center, fuel/convenience retail, hospitality, restaurant, retail strip, or industrial/commercial flex use.

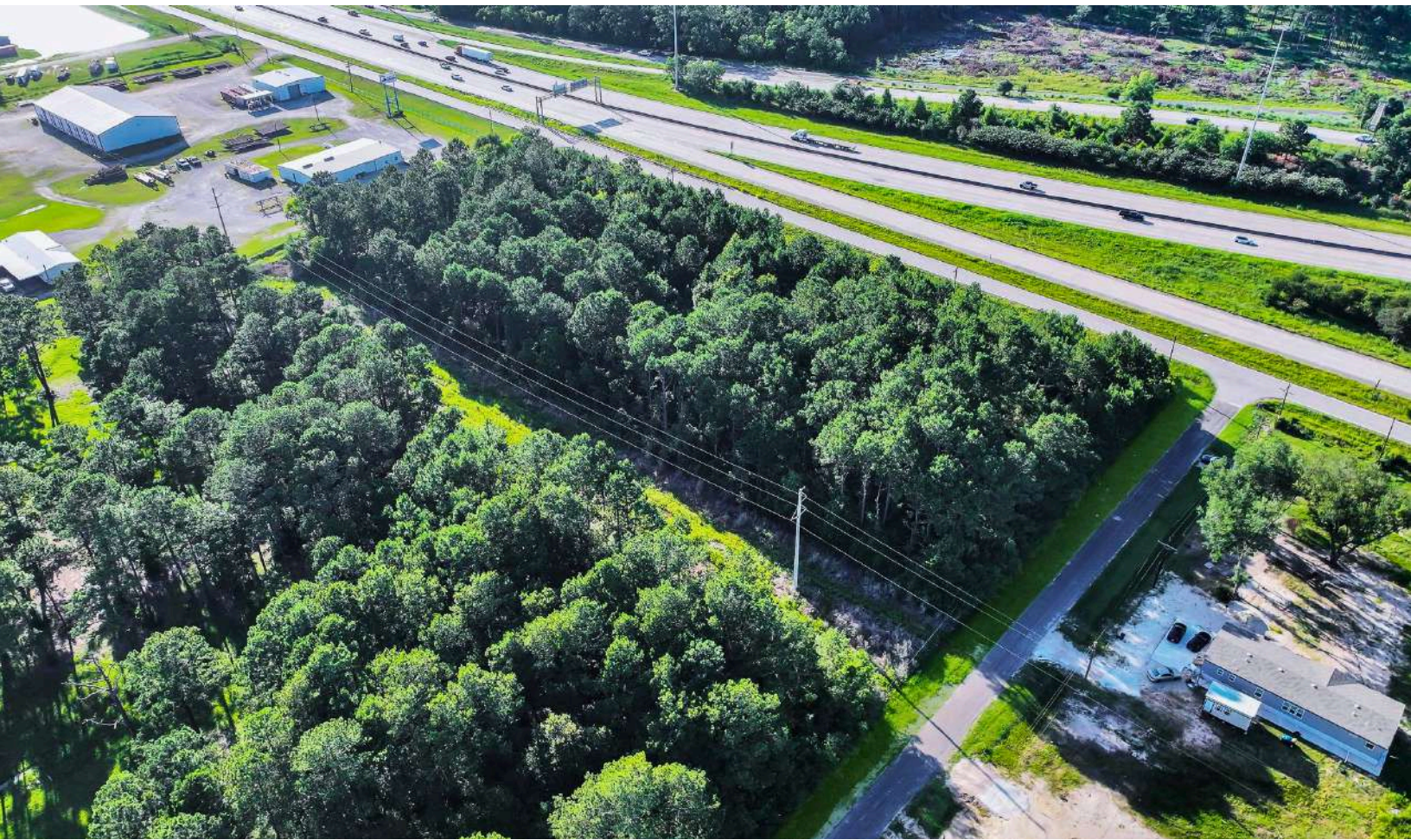


THE INFORMATION PROVIDED HEREIN IS BELIEVED TO BE ACCURATE BUT IS NOT GUARANTEED BY ANDRUS LAND GROUP. DETAILS ARE SUBJECT TO CHANGE AT ANY TIME WITHOUT NOTICE.



UTILITIES & INFRASTRUCTURE.

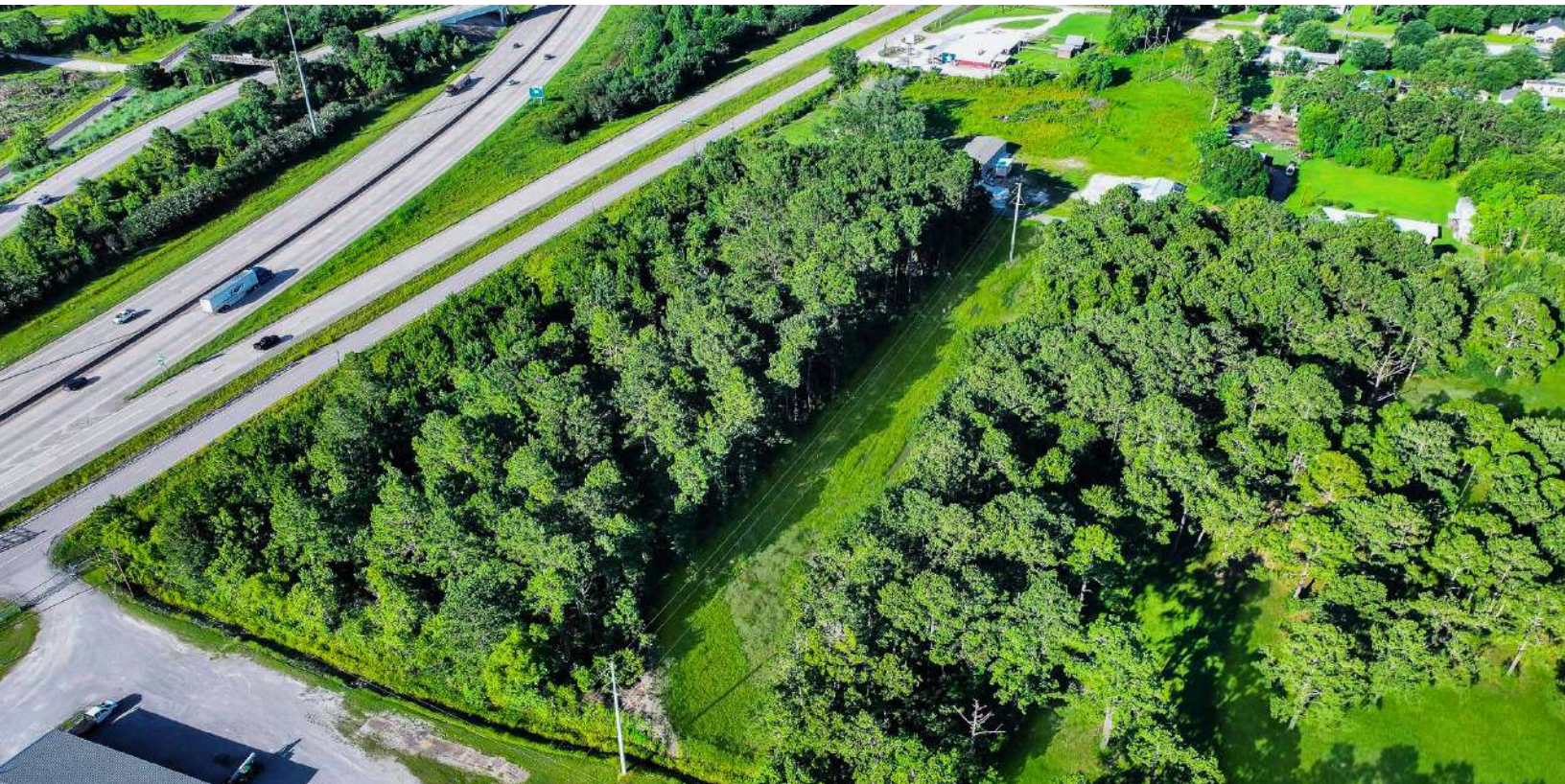
Water and sewer are available to the site, with fiber optic service in place to support modern commercial and data-driven operations. A 138 KV transmission line runs across the rear of the property, providing substantial power capacity for energy-intensive users.



THE INFORMATION PROVIDED HEREIN IS BELIEVED TO BE ACCURATE BUT IS NOT GUARANTEED BY ANDRUS LAND GROUP. DETAILS ARE SUBJECT TO CHANGE AT ANY TIME WITHOUT NOTICE.

000 HWY 73 & 9TH ST. WINNIE, TX 77665

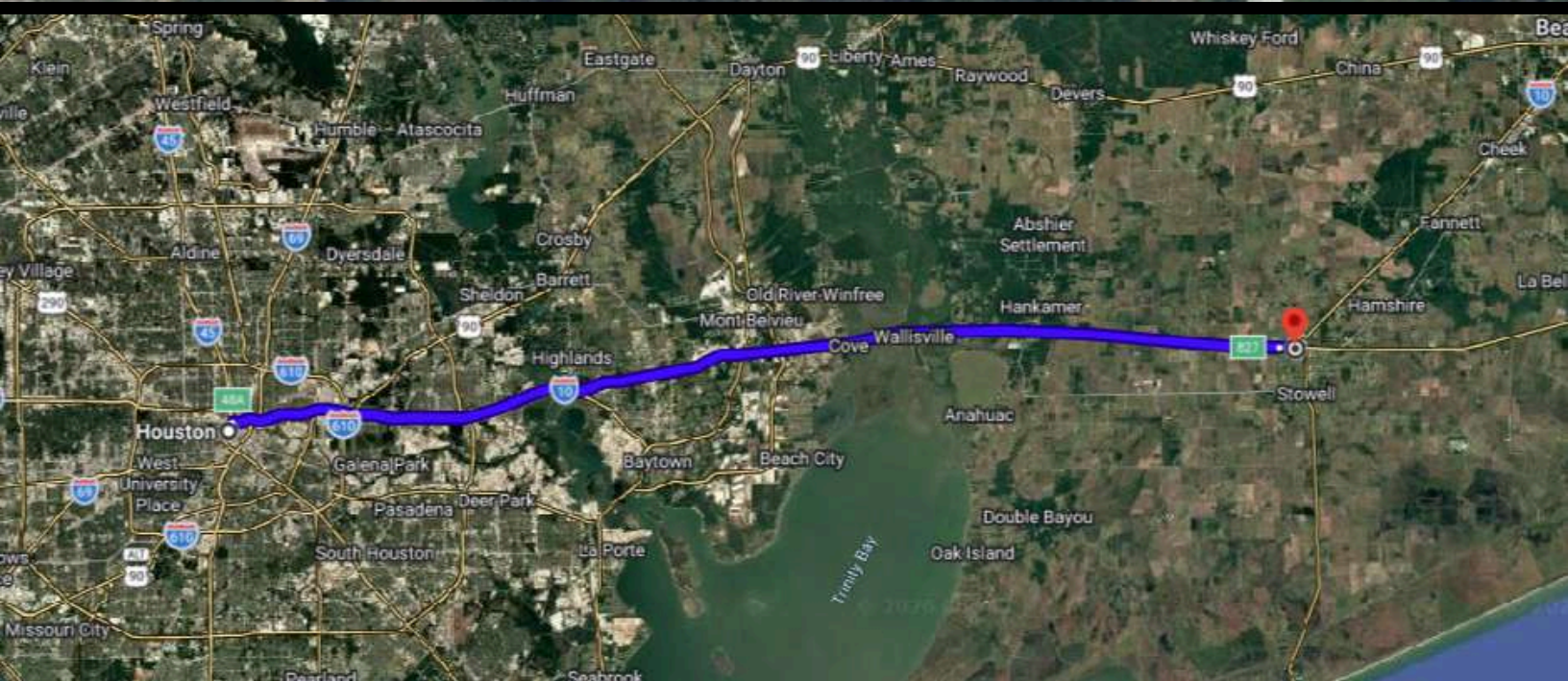
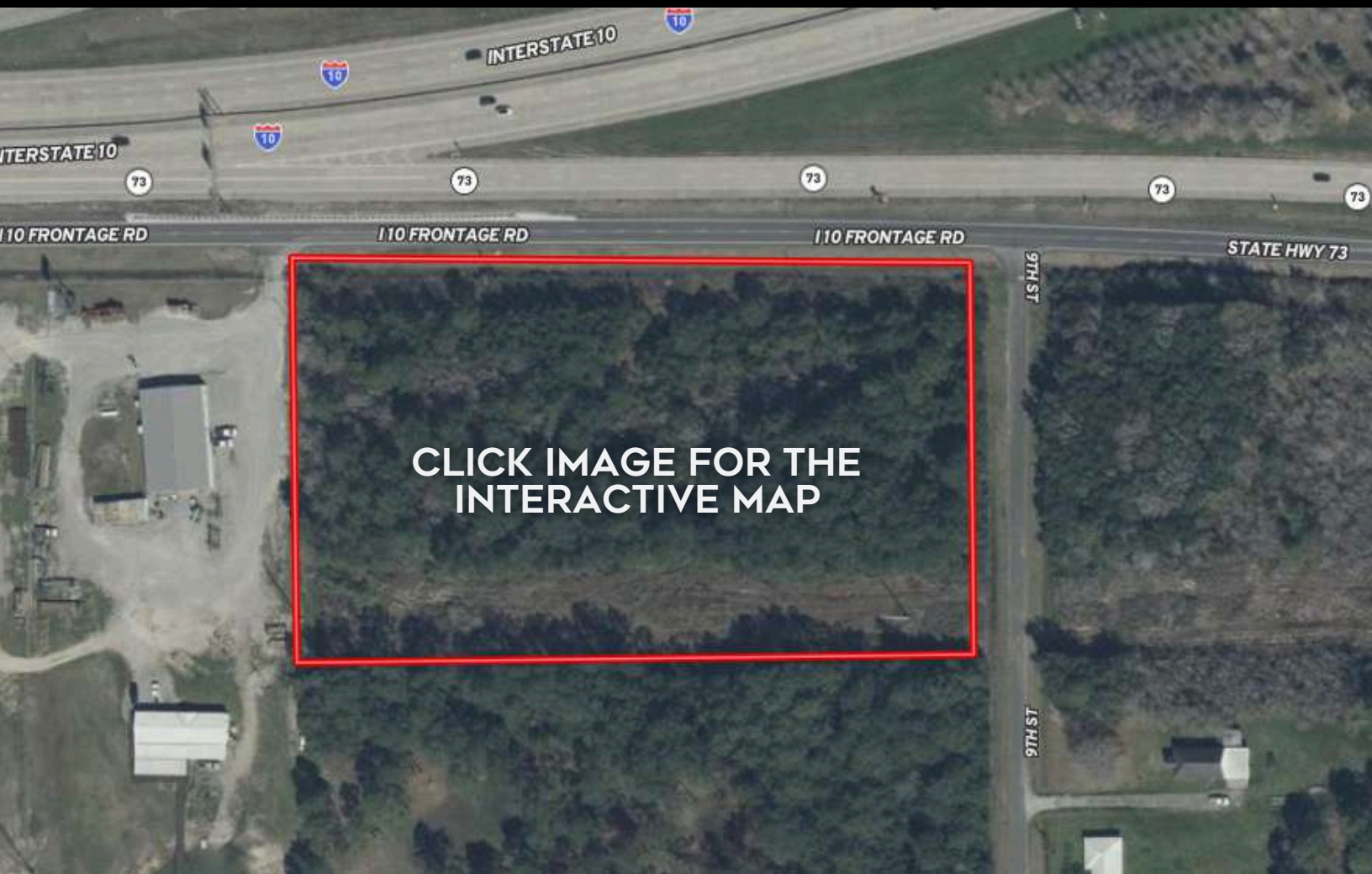
CHAMBERS COUNTY



INVESTMENT APPEAL

Designation within a federal Opportunity Zone offers meaningful tax-advantaged investment potential, including capital gains deferral and reduction for qualified development. Chambers County remains one of Texas's fastest-growing, business-friendly counties, and infrastructure-ready interstate corners along this segment of I-10 are increasingly difficult to replace.





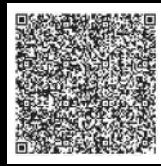
NAVIGATION DIRECTIONS

From Houston:

Take I-10 east and take exit 827. Travel 3/4 mile on service road. Property on right

CHAD ANDRUS, ALC ACCREDITED LAND CONSULTANT

chad@andruslandgroup.com
832-402-9211
www.andruslandgroup.com



ALL MATERIALS AND INFORMATION RECEIVED OR DERIVED FROM ANDRUS LAND GROUP AND ITS DIRECTORS, OFFICERS, AGENTS, ADVISORS, AFFILIATES AND/OR ANY THIRD PARTY SOURCES ARE PROVIDED WITHOUT REPRESENTATION OR WARRANTY AS TO COMPLETENESS, VERACITY, OR ACCURACY, CONDITION OF THE PROPERTY, COMPLIANCE OR LACK OF COMPLIANCE WITH APPLICABLE GOVERNMENTAL REQUIREMENTS, DEVELOPABILITY OR SUITABILITY, FINANCIAL PERFORMANCE OF THE PROPERTY, PROJECTED FINANCIAL PERFORMANCE OF THE PROPERTY FOR ANY PARTY'S INTENDED USE OR ANY AND ALL OTHER MATTERS. NEITHER ANDRUS LAND GROUP, ITS DIRECTORS, OFFICERS, AGENTS, ADVISORS, OR AFFILIATES MAKES ANY REPRESENTATION OR WARRANTY, EXPRESS OR IMPLIED, AS TO ACCURACY OR COMPLETENESS OF THE MATERIALS OR INFORMATION PROVIDED, DERIVED, OR RECEIVED. MATERIALS AND INFORMATION FROM ANY SOURCE, WHETHER WRITTEN OR VERBAL, THAT MAY BE FURNISHED FOR REVIEW ARE NOT A SUBSTITUTE FOR A PARTY'S ACTIVE CONDUCT OF ITS OWN DUE DILIGENCE TO DETERMINE THESE AND OTHER MATTERS OF SIGNIFICANCE TO SUCH PARTY. ANDRUS LAND GROUP WILL NOT INVESTIGATE OR VERIFY ANY SUCH MATTERS OR CONDUCT DUE DILIGENCE FOR A PARTY UNLESS OTHERWISE AGREED IN WRITING. EACH PARTY SHALL CONDUCT ITS OWN INDEPENDENT INVESTIGATION AND DUE DILIGENCE.

Ranch. financing made simple



Anthony Vaughan

WINNIE OFFICE

NMLS493828 | 409.400.4066 | capitalfarmcredit.com

Disclaimer: Although the Broker or Agent has used reasonable care in obtaining data, this material is submitted without representation, warranty, or guarantees, and is subject to errors and omissions. Moreover, all information is subject to changes by the owner as to price or terms, to prior lease, to withdrawal of the property from the market, and to other events beyond the control of the Broker.