



MOCK RANCHES  
— kw —  
GLOBAL LAND MARKETING

**kw** PLATINUM  
REALTY  
KELLERWILLIAMS.

# TR 10 EGYPT RD, LA GRANGE, TEXAS, 78945

## FAYETTE COUNTY

**12± ACRES | \$399,999**



MOCK RANCHES  
— kw —  
GLOBAL LAND MARKETING





## PROPERTY DESCRIPTION.

**MULTIPLE TRACTS AVAILABLE!!!**  
Discover the charm of country living on this expansive 12.6+/- acre property. Featuring a thriving hay meadow, this land offers endless possibilities—whether you dream of raising livestock or creating your perfect home. Additionally, there is an impressive 1800+/- sq ft shop and water well in place. Don't miss the chance to leave the city behind and enjoy the peace and serenity of rural life.



ALL INFORMATION IS DEEMED RELIABLE BUT IS NOT WARRANTED BY THE MOCK RANCHES GROUP. ALL INFORMATION IS SUBJECT TO CHANGE WITHOUT PRIOR NOTICE.



# TR 10 EGYPT RD, LA GRANGE, TX, 78945

## FAYETTE COUNTY



## PROPERTY TYPE

Acreage, Cattle Ranch, Ranch,  
Recreational Land, Agriculture  
Business, Farm



# TR 10 EGYPT RD, LA GRANGE, TX, 78945

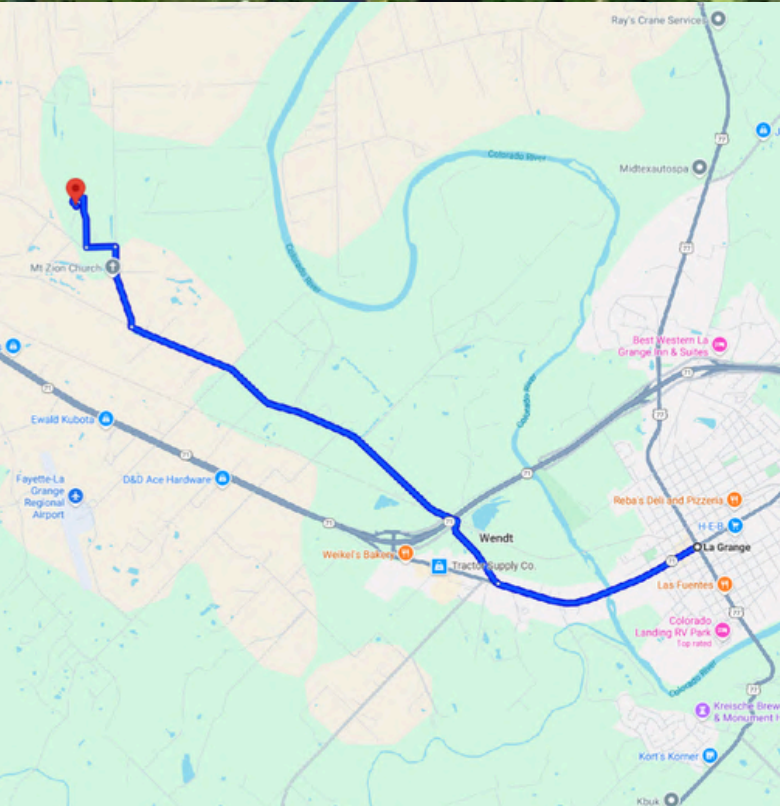
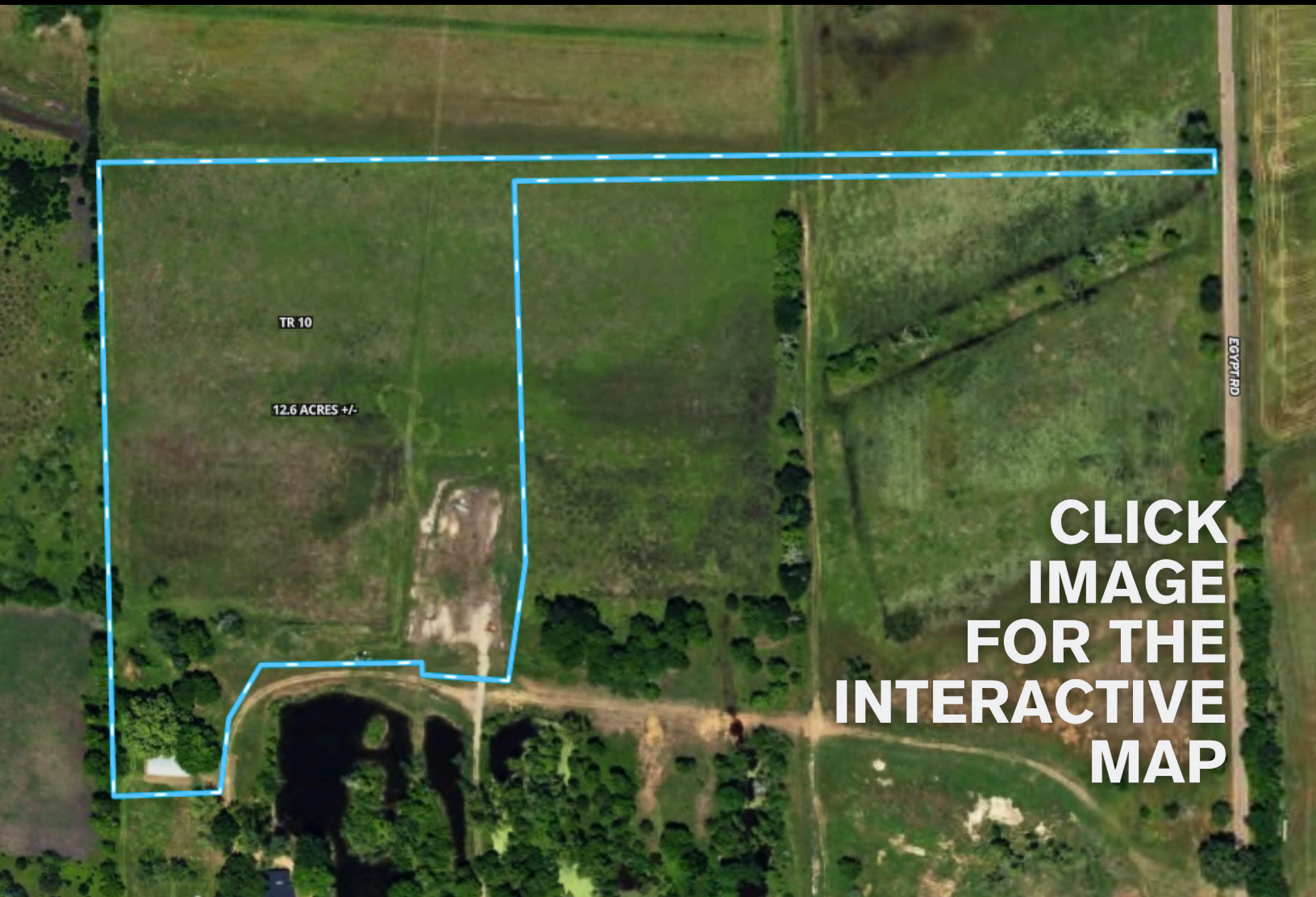
## FAYETTE COUNTY



## PROPERTY FEATURES

Owner Financing





## DRIVING DIRECTION.

Take Hwy 71 West from La Grange and turn right on Huelsebusch, left on Old Plum Hwy, right on Egypt Rd property on the left.





MOCK RANCHES  
kw  
GLOBAL LAND MARKETING

kw PLATINUM  
REALTY  
KELLERWILLIAMS.

## BRANDON STEPHENS, ALC

Accredited Land Specialist

brandonstephens@mockranches.com

(832) 220-1315

ww.mockranches.com



MOCK RANCHES GROUP  
kw  
GLOBAL LAND MARKETING



ALL MATERIALS AND INFORMATION RECEIVED OR DERIVED FROM THE MOCK RANCHES GROUP AND ITS DIRECTORS, OFFICERS, AGENTS, ADVISORS, AFFILIATES AND/OR ANY THIRD PARTY SOURCES ARE PROVIDED WITHOUT REPRESENTATION OR WARRANTY AS TO COMPLETENESS, VERACITY, OR ACCURACY, CONDITION OF THE PROPERTY, COMPLIANCE OR LACK OF COMPLIANCE WITH APPLICABLE GOVERNMENTAL REQUIREMENTS, DEVELOPABILITY OR SUITABILITY, FINANCIAL PERFORMANCE OF THE PROPERTY, PROJECTED FINANCIAL PERFORMANCE OF THE PROPERTY FOR ANY PARTY'S INTENDED USE OR ANY AND ALL OTHER MATTERS. NEITHER MOCK RANCHES, ITS DIRECTORS, OFFICERS, AGENTS, ADVISORS, OR AFFILIATES MAKES ANY REPRESENTATION OR WARRANTY, EXPRESS OR IMPLIED, AS TO ACCURACY OR COMPLETENESS OF THE MATERIALS OR INFORMATION PROVIDED, DERIVED, OR RECEIVED. MATERIALS AND INFORMATION FROM ANY SOURCE, WHETHER WRITTEN OR VERBAL, THAT MAY BE FURNISHED FOR REVIEW ARE NOT A SUBSTITUTE FOR A PARTY'S ACTIVE CONDUCT OF ITS OWN DUE DILIGENCE TO DETERMINE THESE AND OTHER MATTERS OF SIGNIFICANCE TO SUCH PARTY. MOCK RANCHES WILL NOT INVESTIGATE OR VERIFY ANY SUCH MATTERS OR CONDUCT DUE DILIGENCE FOR A PARTY UNLESS OTHERWISE AGREED IN WRITING. EACH PARTY SHALL CONDUCT ITS OWN INDEPENDENT INVESTIGATION AND DUE DILIGENCE.

# Ranch. financing made simple



NMLS 1988139

Anthony Vaughan

WINNIE OFFICE

NMLS493828 | 409.400.4066 | capitalfarmcredit.com

Disclaimer: Although the Broker or Agent has used reasonable care in obtaining data, this material is submitted without representation, warranty, or guarantees, and is subject to errors and omissions. Moreover, all information is subject to changes by the owner as to price or terms, to prior lease, to withdrawal of the property from the market, and to other events beyond the control of the Broker.