

An aerial photograph of a large, open green field, likely a pasture or undeveloped land. A dirt road or path runs diagonally across the field, with several smaller paths branching off. The field is surrounded by a dense forest of tall trees. The sky is clear and blue.

MONTGOMERY, TX

745 +/- Acres, call for pricing

Presented by: **Jacobs Properties**

Primary POC: **Shannon Thornton**

C: 936-520-8138 O: 936-597-3301

TXLAND.COM



An aerial photograph showing a large, irregularly shaped tract of land. The tract is mostly green with some cleared areas. A large, light-colored, sandy area in the center-right of the tract is labeled '25-30 Acre Lake in progress'. The tract is surrounded by dense green forest. In the upper left, a golf course is visible. A road runs along the bottom left, and another road runs along the right side. The text 'Bluejack National' is at the top, 'West' is on the right, 'Fm 1774 & 249 Aggie Expressway' is on the right, 'North Hwy 105' is at the bottom left, and '745 Acre Subject Tract' is in the center.

Bluejack National

25-30 Acre Lake in progress

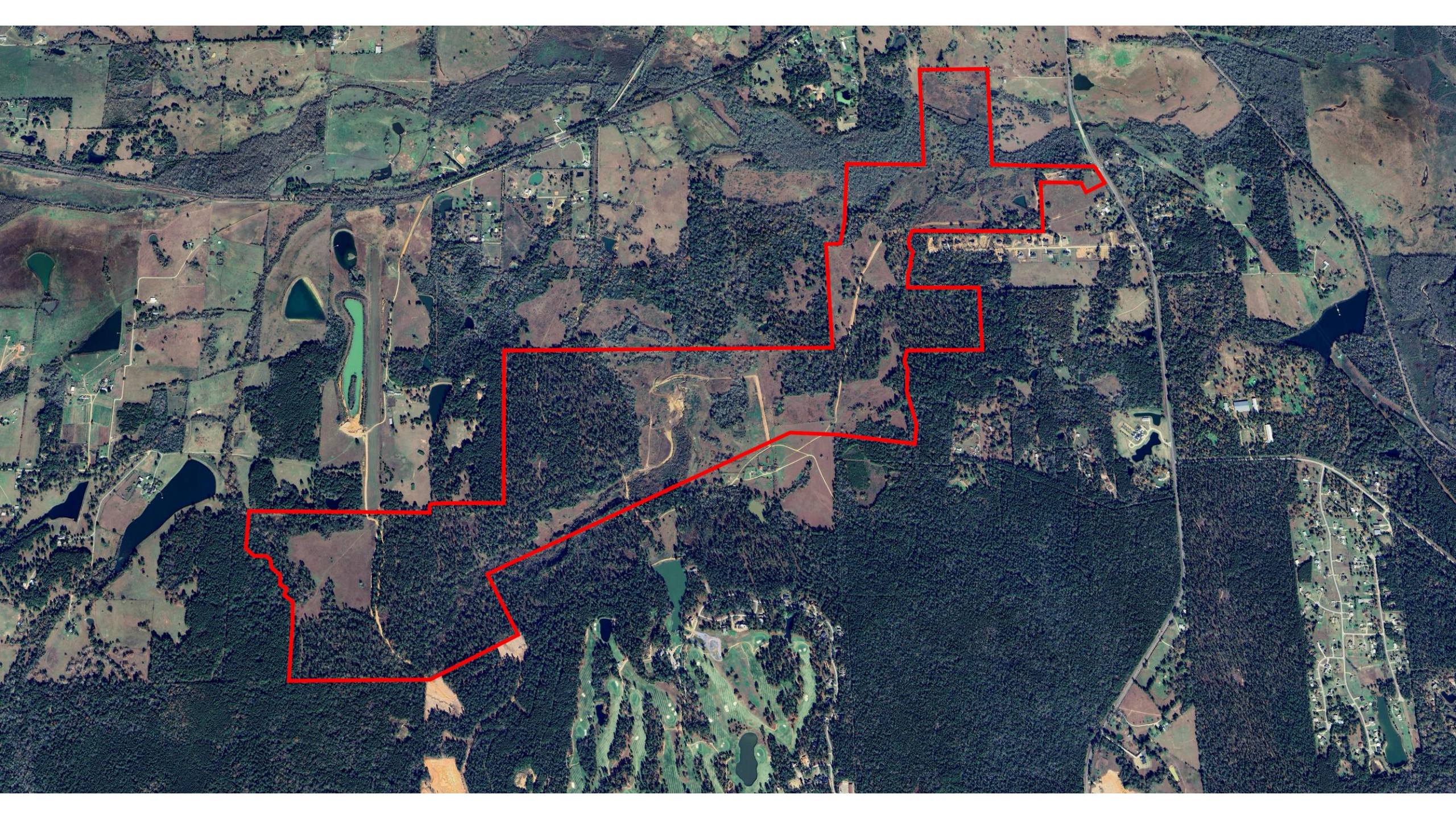
West

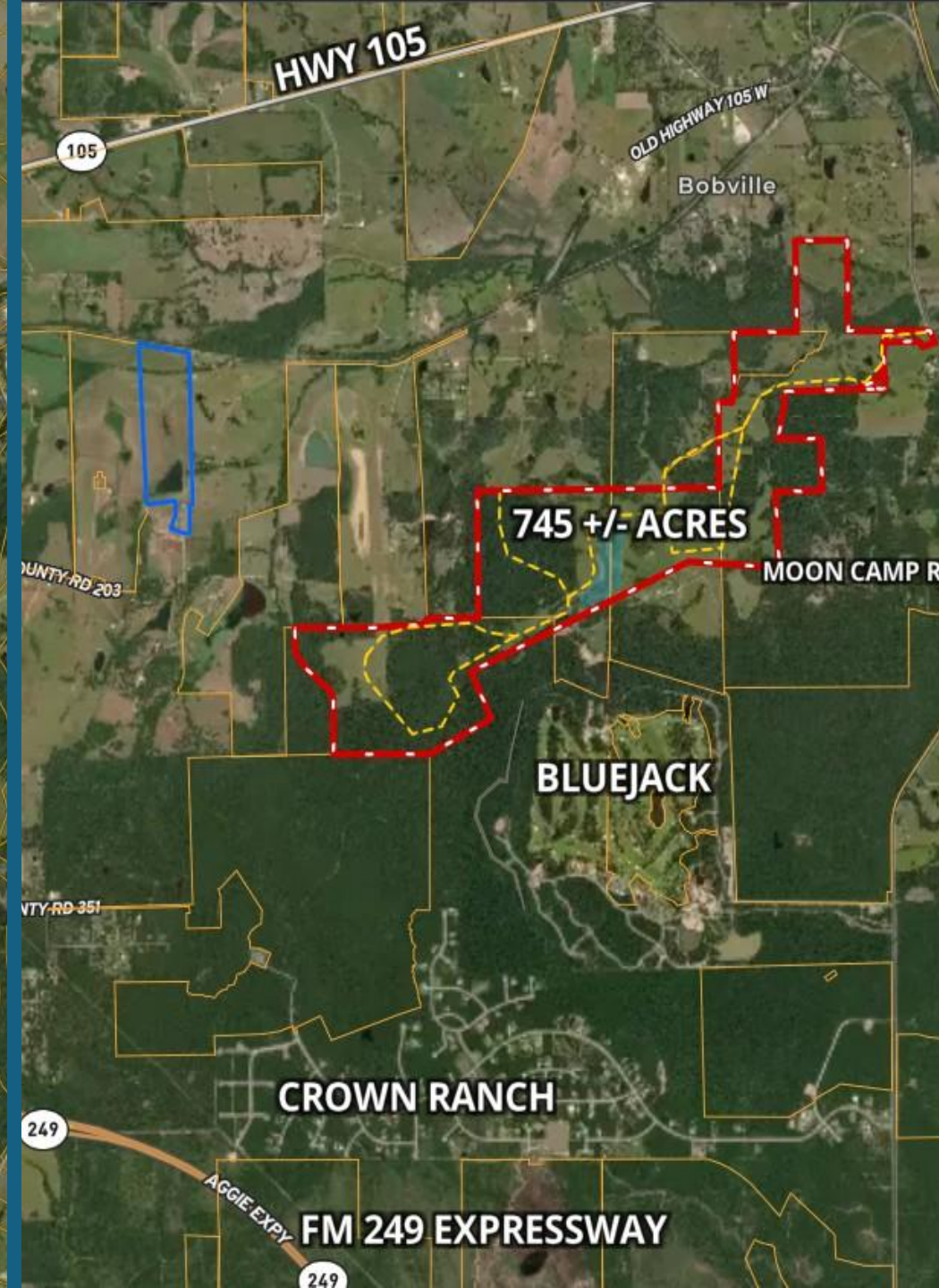
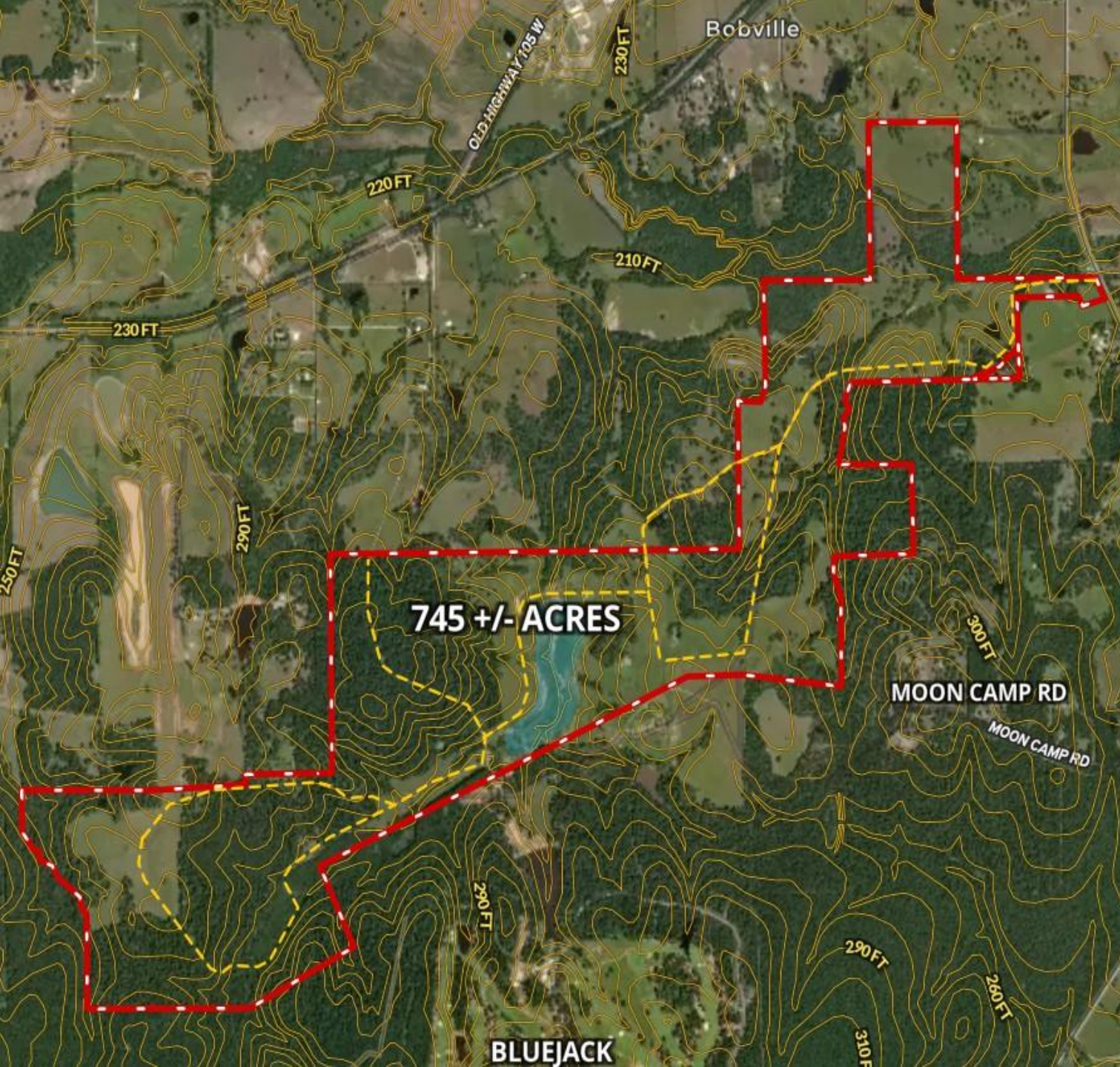
Fm 1774 &
249 Aggie
Expressway

745 Acre Subject
Tract

North
Hwy 105







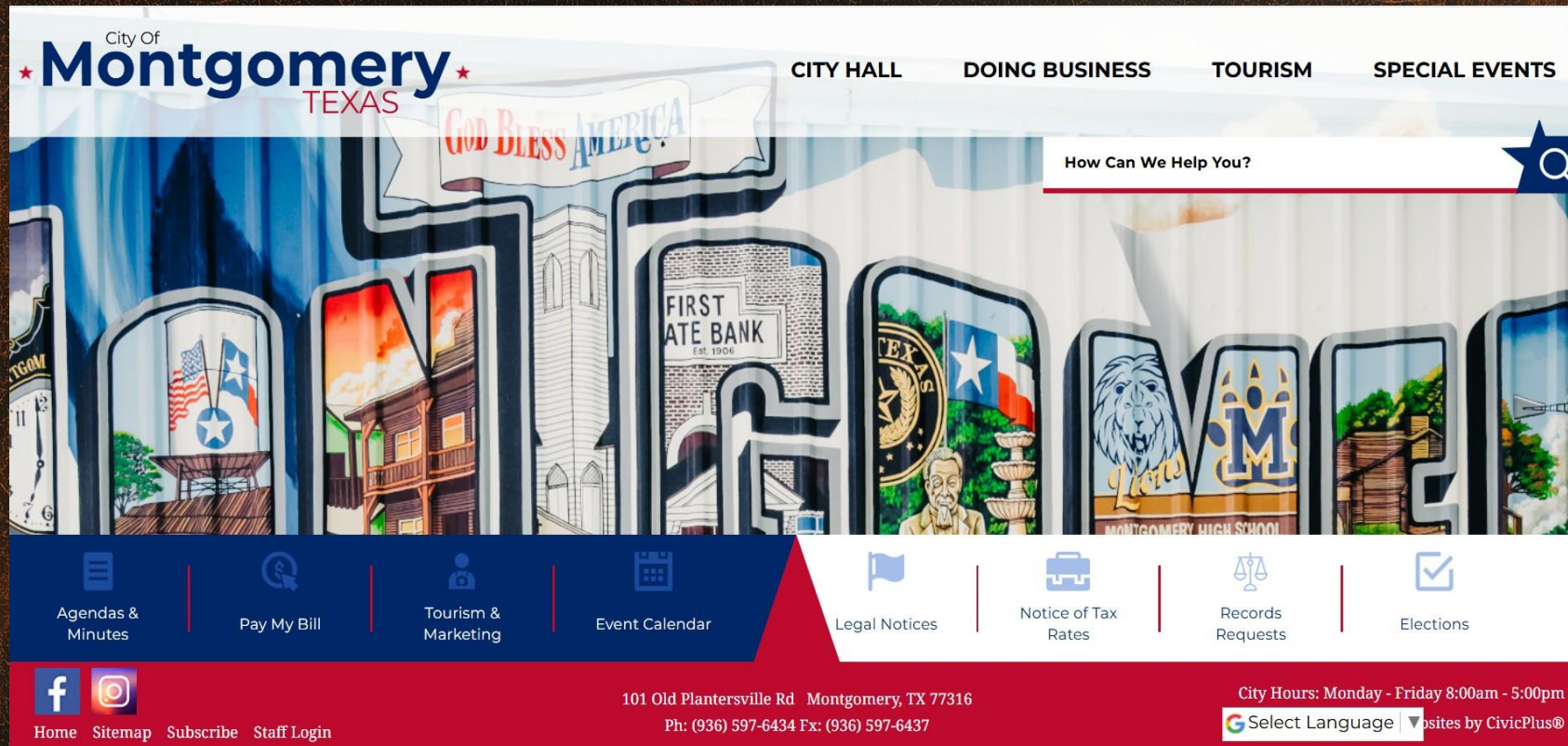
Jacobs Properties

The last one! This spectacular 745 +/- acre Ranch has approx. 285' of frontage on FM 1486. It is the last large acreage tract immediately south of Hwy 105 in Dobbin. Located 8 miles from Montgomery, 6 miles from the 249/Aggie Expressway and approx. 10 miles from Magnolia, there will be no more like this one! The ranch, or some form of it, has been in the same family for over a century and has rarely been subdivided. The last tract out of the ranch to be sold was the neighboring Blaketree golf course, now known as Bluejack National. This property features some of the prettiest land in southeast Texas with beautiful hillsides and valleys, an ideal 50/50 open to wooded ratio with existing roadsites throughout. The future 25-30 acre lake should offer lakeside or lakeview homesites with approx. 60' of vantage points from the east, west & north perimeters. Towering pines and majestic oaks draped with Spanish moss are sprinkled throughout...it's Texas perfect! MISD, easy access to everything!




Shannon Thornton
936-520-8138
TXLAND.COM

Welcome to Montgomery, Texas




City Of
Montgomery
TEXAS

CITY HALL DOING BUSINESS TOURISM SPECIAL EVENTS

How Can We Help You? 

Agendas & Minutes Pay My Bill Tourism & Marketing Event Calendar Legal Notices Notice of Tax Rates Records Requests Elections

101 Old Plantersville Rd Montgomery, TX 77316
Ph: (936) 597-6434 Fx: (936) 597-6437

City Hours: Monday - Friday 8:00am - 5:00pm
Select Language  Sites by CivicPlus®

<https://www.montgomerytexas.gov/>

Montgomery Texas happens to be one of the oldest towns in Texas and the Birthplace of the Texas Flag! Prior to being chartered in 1837, Montgomery had been known as Lake Creek Settlement known to some as Montgomery Settlement, also known as Montgomery Prairie. In Montgomery's early days, it was the trade center for a large farming area, where stagecoach and telegraph lines crossed. The first school was established in 1839 and in 1848 the City of Montgomery was incorporated. A building boom occurred in the 1850's and some of the fine homes built at the time remain today with descendants of the original owners or early owners occupying them.



The Lone Star Flag with its vivid colors of red, white, blue with a single inset 5-point star has served as a proud symbol of Texas. At the request of Mirabeau B. Lamar, President of the Republic of Texas, commissioned Dr. Charles Bellinger Stewart a resident of Montgomery to create the Texas Flag. The Lone Star Flag was officially adopted in 1839, and since that time has adorned flagpoles across the State of Texas. Dr. Stewart's original drawing signed by President Lamar is held at the State Archives in Austin. A copy of the original drawing can be viewed in our N.H. Davis Pioneer Complex & Museum. Dr. Stewart is buried in the New Montgomery Cemetery, founded in 1868.



On May 30, 1997, the House of Representatives of the 75th Texas Legislature officially commemorated Montgomery County as the Birthplace of the Lone Star Flag.

<https://www.montgomerytexas.gov/>

Montgomery, Tx : City and County Information Links

Montgomery County Data USA

* <https://datausa.io/profile/geo/montgomery-county-tx>

Montgomery County, Texas

* <https://www.mctx.org/index.php>

Montgomery County Appraisal District

* <https://mcad-tx.org/>

Montgomery County, County Clerk

* https://www.mctx.org/departments/departments_a_-_c/county_clerk/index.php

Montgomery County IT-GIS

* <https://it-gis-hub-moco.hub.arcgis.com/pages/commissioner>

Montgomery County Emergency Communication District

* <https://www.mc911.org/>

City of Montgomery, Texas

* <https://www.montgomerytexas.gov/>

Montgomery Independent School District

* <https://www.misd.org/home>

Mid South Electric Cooperative, Electricity, Fiber Internet

* <https://www.midsouthelectric.com/services/residential-services>

MONTGOMERY COUNTY MAP

TEXAS (USA)



Grimes

Walker

San Jacinto

Polk

Montgomery

Lewis Creek Reservoir
Conroe Lake

Willis

Panorama Village

Cut and Shoot

Conroe

Montgomery

Texas

Liberty

Splendora

Woodloch

Magnolia

Pinehurst

The Woodlands

Shenandoah

Woodbranch

Patton Village

Roman Forest

Stagecoach

Oak Ridge North

Porter Heights

Harris

Waller

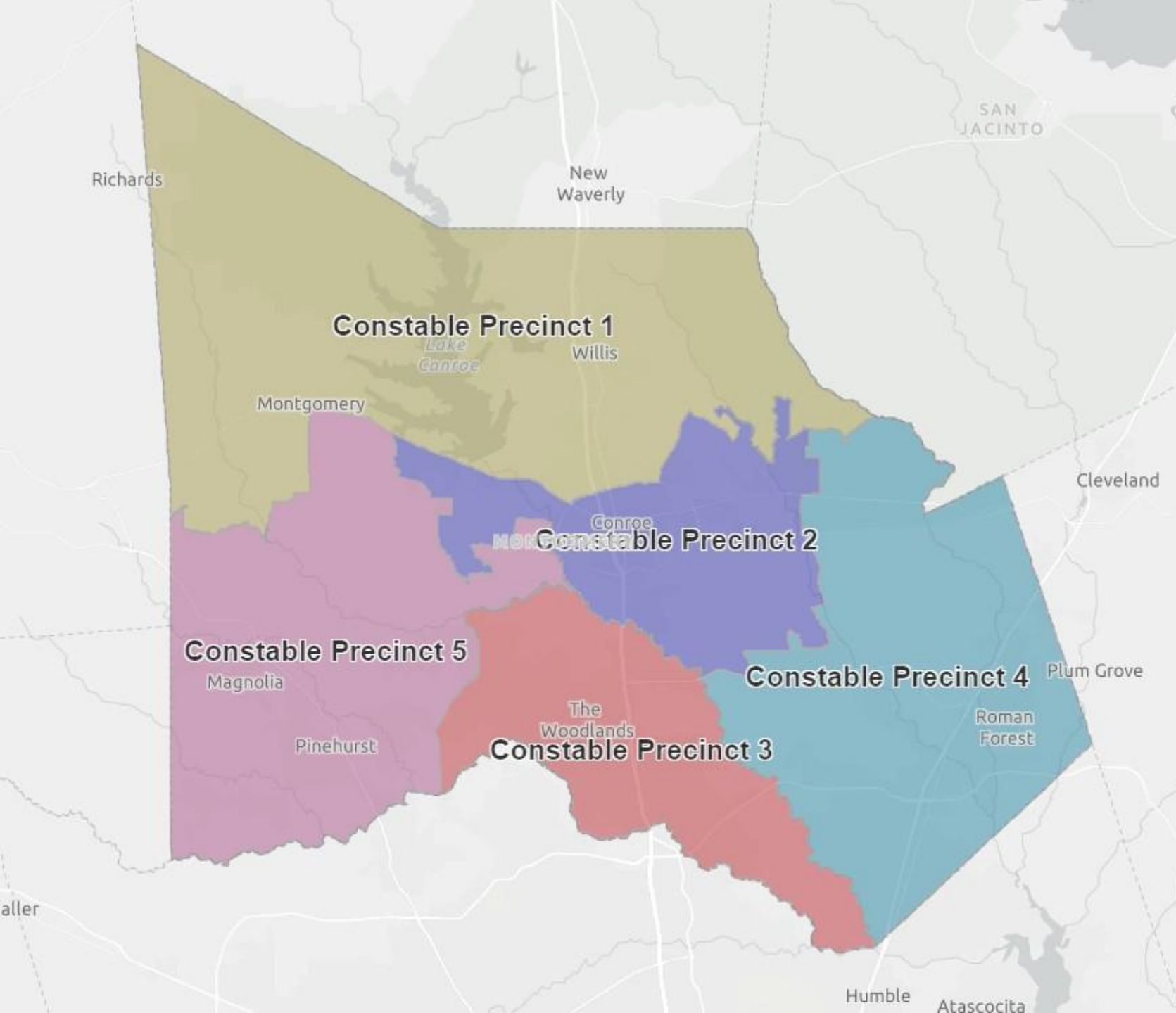
Legend

- Major City
- County Seat
- Major Road
- Railway
- County Boundary
- Waterbody

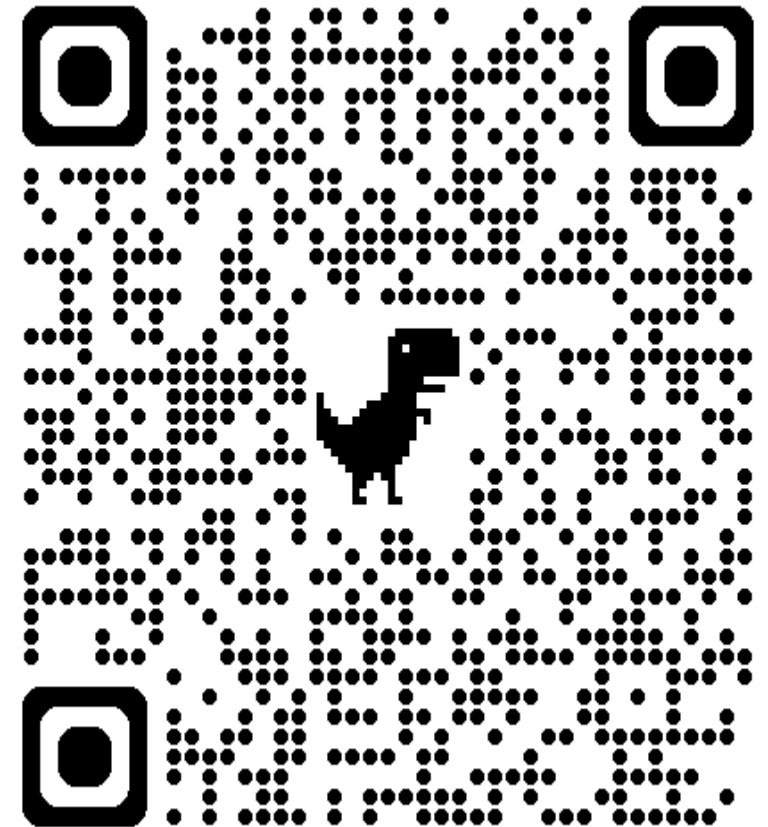
0 2.75 5.5 11 16.5 22 Miles

Copyright © 2014 www.mapsofworld.com





<https://www.arcgis.com/apps/InformationLookup/index.html?appid=a904b98cada24f93b0217d160bae42ab>



Montgomery, Tx : Community & Event Centers

Lone Star Community Center

* <https://mctxcommpct1.org/lsccl/>

Olde Dobbin Station

* <https://oldedobbinstation.com/>

Hodge Podge Lodge

* <https://www.hodgepodgelodge.com/>

The Farmhouse

* <https://thefarmhouseevents.com/>

Jennings Trace

* <https://www.facebook.com/jenningstracevenue/>

The Springs

* <https://springsvenue.com/lake-conroe/>

April Sounds Country Club

* <https://www.invitedclubs.com/clubs/april-sound-country-club/host-an-event>

Walden on Lake Conroe

* <https://www.waldenonlakeconroe.com/events-venue>

Margaritaville

* <https://www.margaritavilleresorts.com/margaritaville-lake-resort-lake-conroe>



Montgomery, Tx : Recreation & Activities Pg 1

Lake Conroe

* <https://www.visitconroe.com/lake-conroe/>

Sam Houston National Forest WMA

* https://tpwd.texas.gov/huntwild/hunt/wma/find_a_wma/list/?id=30

Bluejack National Club & Community

* <https://www.bluejacknational.com/>

Margaritaville

* <https://www.margaritavilleresorts.com/margaritaville-lake-resort-lake-conroe>

Montgomery area Vineyards

* <https://www.bernhardtwinery.com/>

* <https://www.whitleyvineyards.com/>

* <https://www.deeprootsvineyards.com/>

Cedar Brake Park

* <https://www.montgomerytexas.gov/parksrec/page/cedar-brake-park>

Fernland Historical Park

* <https://www.montgomerytexas.gov/parksrec/page/fernland-historical-park>

Montgomery, Tx : Recreation & Activities Pg 2

The Caroline House

* <https://www.thecarolinehousebb.com/things-to-do-in-montgomery-tx>

7 Acre Wood

* <https://7acrewood.org/>

Once Upon A Cowboy

* <https://www.onceuponacowboy.com/attractions>

Texas TreeVentures

* <https://texastreeventures.com/info/>

P-6 Farms

* <https://www.p-6farms.com/>

Longview Greens Miniature Golf

* <http://www.longviewgreens.com/>

Catch a Trophy Fishing Guide Service

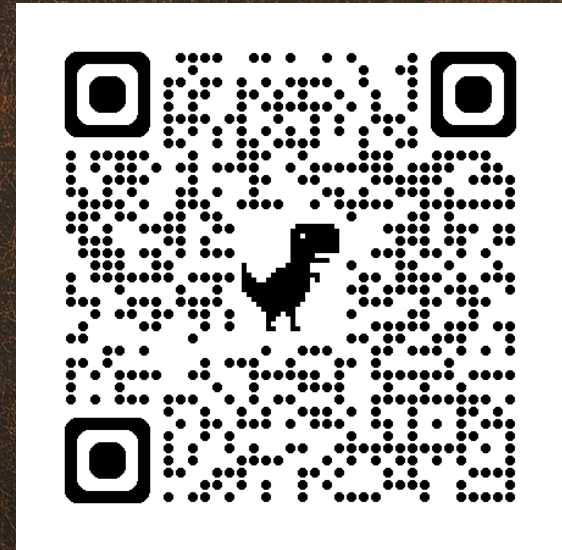
* <https://conroefishingguide.com/>

Texas Renaissance Festival

* <https://www.texrenfest.com/>

Montgomery, Tx : Shopping, Groceries, Etc

- * Brookshire Bros
- * McCoy's Building Supply
- * Home Depot
- * HEB...Fall of 2026
- * Kroger
- * Mariel's Meat Market
- * Express Oil Change
- * Discount Tire
- * Walmart
- * O'Reilly Auto Parts
- * Lake Conroe Ace Hardware
- * Auto Zone Auto Parts
- * Napa Auto Parts
- * CVS
- * Walgreens



Area Healthcare references

HCA Houston Healthcare, Conroe

* <https://www.hcahoustonhealthcare.com/locations/conroe>

Houston Methodist Hospital - The Woodlands

* <https://www.houstonmethodist.org/locations/the-woodlands/>

Memorial Hermann

* <https://memorialhermann.org/locations/woodlands>

Texas Children's Hospital

* <https://www.texaschildrens.org/locations/texas-childrens-hospital/the-woodlands>

St. Luke's Health

* <https://locations.stlukeshealth.org/location/woodlands-hospital>

HCA Houston Healthcare Tomball

* <https://www.healthgrades.com/hospital/hca-houston-healthcare-tomball-8cdbc4>

Montgomery County Hospital District

* <https://www.mchd-tx.org/about/>

NextCare Urgent Care: Montgomery

* <https://nextcare.com/locations/tx/montgomery/>

Surrounding Cities, Data USA, Pg 1

Conroe, Texas

* <https://datausa.io/profile/geo/conroe-tx>

Magnolia, Texas

* <https://datausa.io/profile/geo/magnolia-tx>

The Woodlands, Texas

* <https://datausa.io/profile/geo/the-woodlands-tx>

Spring, Texas

* <https://datausa.io/profile/geo/spring-tx>

Tomball, Texas

* <https://datausa.io/profile/geo/tomball-tx>

Houston, Texas

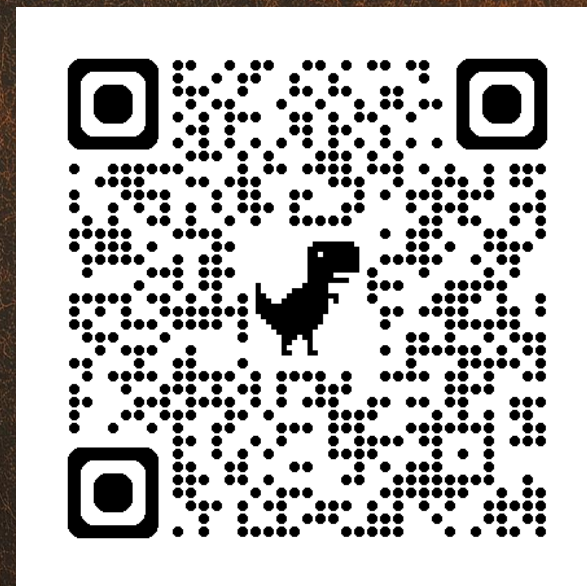
* <https://datausa.io/profile/geo/houston-tx>

College, Station

* <https://datausa.io/profile/geo/college-station-tx>

Willis, Texas

* <https://datausa.io/profile/geo/willis-tx/>



Surrounding Cities, Data USA, Pg 2

Huntsville, Texas

* <https://datausa.io/profile/geo/huntsville-tx-31000US26660>

Waller, Texas

* <https://datausa.io/profile/geo/waller-tx/>

Hempstead, Texas

* <https://datausa.io/profile/geo/hempstead-tx>

Navasota, Texas

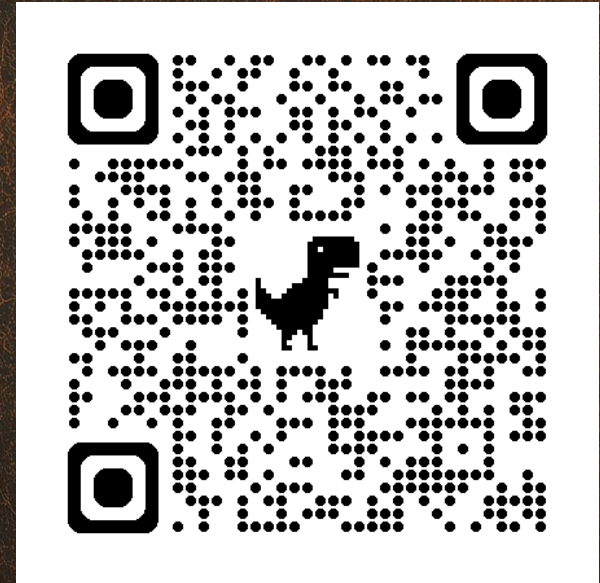
* <https://datausa.io/profile/geo/navasota-tx>

Brenham, Texas

* <https://datausa.io/profile/geo/brenham-tx>

Caldwell, Texas

* <https://datausa.io/profile/geo/caldwell-tx>



Area Housing Developments

Bluejack National Club & Community

* <https://www.bluejacknational.com/>

Montgomery Farms

* <https://wscbuilds.com/montgomery-farms/>

Crown Ranch

* <http://www.crownranch.com/>

Magnolia Springs

* <https://www.magnoliaspringstx.com/>

Kresston

* <https://kresston.com/>

The Cedars by High Meadows

* <https://highmeadowtx.com/communities/the-cedars>

Perfection Ranch

* <https://www.facebook.com/groups/perfectionranch/>

High Meadow Ranch

* <https://highmeadowtx.com/communities/high-meadow-west>

Grimes County Information Links

Grimes County Data USA

* [https://datausa.io/profile/geo/grimes-county-tx#:~:text=Grimes%20County%2C%20TX%20is%20home,country%20\(2.15k%20people\).](https://datausa.io/profile/geo/grimes-county-tx#:~:text=Grimes%20County%2C%20TX%20is%20home,country%20(2.15k%20people).)

Grimes County, Texas

* <https://grimescountytexas.gov/>

Grimes County Appraisal District

* <https://grimescad.org/>

Grimes County, County Clerk

* <https://grimescountytexas.gov/county-clerk>

Grimes County Emergency Communication District

* <https://grimescountytx.govoffice.com/911-addressing>



Montgomery County, Growth Information

<https://www.houstonpublicmedia.org/articles/news/local/2025/03/14/516039/montgomery-liberty-counties-among-nations-fastest-growing-regions/>

<https://www.conroenews.org/article/montgomery-county-growth-outpaces-harris-county-as-texas-population-booms>

<https://communityimpact.com/houston/tomball-magnolia/development/2025/05/23/developer-hopes-to-bring-1b-town-center-to-magnolia-by-2027>

<https://partnersrealestate.com/research/houstons-northward-expansion-a-look-at-the-woodlands-conroe-and-the-further-growth-of-montgomery-county/>

County & TxDot Road Expansion Information

<https://communityimpact.com/houston/conroe-montgomery/transportation/2023/11/17/montgomery-county-approves-14m-for-fm-149-fm-1486-expansions/>

<https://communityimpact.com/houston/tomball-magnolia/government/2024/05/07/montgomery-county-approves-27m-for-fm-1486-expansion-design/>

<https://www.txdot.gov/projects/project-tracker.html>

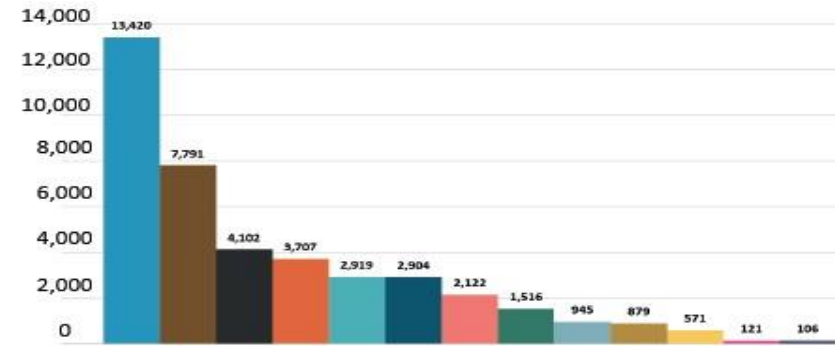
2025 MAJOR EMPLOYERS NON-RETAIL



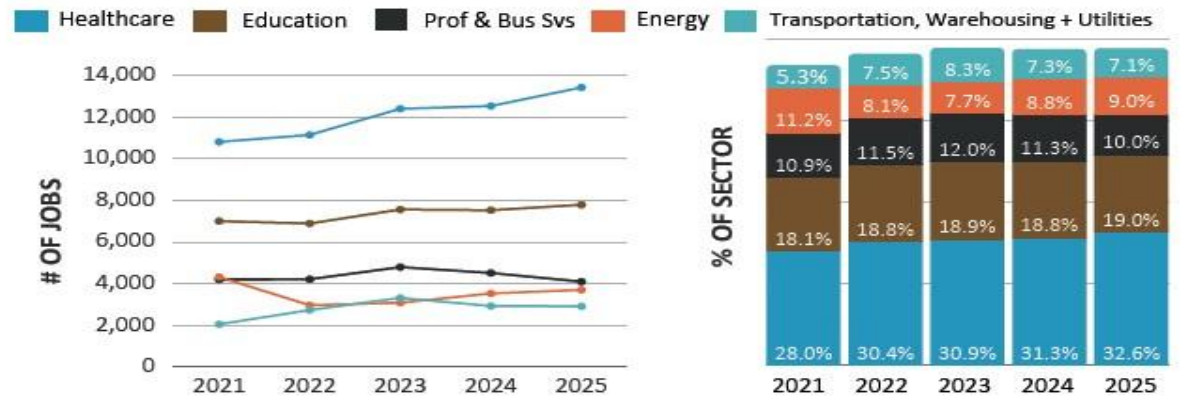
	ORGANIZATION	EMPLOYEE COUNT	INDUSTRY
1	Conroe Independent School District	4,857	Education
2	Memorial Hermann The Woodlands Medical Center	3,300	Healthcare
3	Houston Methodist The Woodlands Hospital	2,937	Healthcare
4	St. Luke's Health	2,412	Healthcare
5	Lone Star College	1,589	Education
6	Texas Children's	1,526	Healthcare
7	Chevron Phillips Chemical Company	1,225	Chemical
8	Woodforest National Bank	1,163	Financial Services
9	Occidental Petroleum Corporation	1,101	Energy
10	Entergy Texas	1,021	Transportation, Warehousing & Utilities
11	Alight Solutions	919	Professional & Business Services
12	Huntsman Corporation	874	Chemical
13	McKesson	758	Healthcare
14	Repsol USA	737	Energy
15	The Cynthia Woods Mitchell Pavilion	616	Hospitality & Entertainment
16	Baker Hughes	575	Manufacturing
17	The Woodlands Township	571	Public Agencies
18	Invited Clubs	570	Hospitality & Entertainment
19	CVS Corporation	517	Transportation, Warehousing & Utilities
20	Linde	502	Professional & Business Services
21	Coral Tree Hospitality	500	Hospitality & Entertainment
22	Western Midstream	488	Energy
23	Encompass Health	433	Healthcare
24	The John Cooper School	406	Education
25	The Woodlands Financial Group	403	Professional & Business Services
26	Montgomery County Precinct 3	374	Public Agencies
27	MD Anderson Cancer Center The Woodlands	368	Healthcare
28	Disney Digital Center 3	353	Professional & Business Services
29	Waste Connections	352	Transportation, Warehousing & Utilities
30	Emerus	338	Healthcare
31	Univar Solutions	332	Chemical
32	Global Shop Solutions	327	Professional & Business Services
33	Tomball Independent School District	320	Education
34	Halliburton	304	Manufacturing
35	Kiewit	291	Professional & Business Services
36	Martin-Brower	287	Transportation, Warehousing & Utilities
37	Howard Hughes Holdings Inc.	284	Real Estate Development
38	Ovintiv	268	Energy
39	Maersk	256	Transportation, Warehousing & Utilities
40	The Club at Carlton Woods	250	Hospitality & Entertainment
41	Kelsey-Seybold Clinic	219	Healthcare
42	Elevate Patient Financial Solutions	213	Professional & Business Services
43	Indorama Ventures	211	Chemical
44	Nexus Health Systems	209	Healthcare
45	Arena Energy & Subsidiaries	198	Energy
46	The Woodlands Christian Academy	198	Education
47	The Woodlands Waterway Marriott Hotel & Convention Center	186	Hospitality & Entertainment
48	The Signorelli Company	183	Real Estate Development
49	Tachus Fiber Internet	180	Transportation, Warehousing & Utilities
50	Webber	178	Professional & Business Services

*Organizations were contacted for survey results. In case of ties, organizations are listed alphabetically.

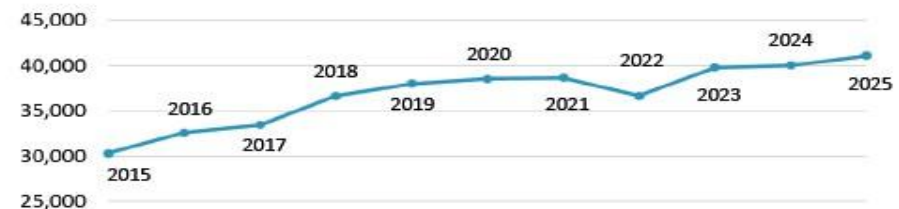
2025 MAJOR EMPLOYERS BY SECTOR 84 COMPANIES | 41,103 EMPLOYEES



TOP 5 SECTOR | WORKFORCE ANALYSIS



10 YEAR WORKFORCE REPORT REVIEW | 2015-2025



FOR A DIGITAL COPY
OF OUR REPORT



POPULATION GROWTH



LOCATION	CENSUS 2020	ESTIMATED 2023	PROJECTED 2028
GREATER HOUSTON MSA	7,122,240	7,500,883	7,895,785
MONTGOMERY COUNTY	620,443	684,914	788,833
THE WOODLANDS AREA*	260,562	278,067	281,490
THE WOODLANDS	114,055	123,000	114,605
20-MILE RADIUS	1,687,630	1,790,644	1,921,562
10-MILE RADIUS	499,404	543,987	594,016

*The Woodlands Area is defined as U.S. Census Tracts 5553 through 6921. This area includes a portion of Harris County and the cities of Shenandoah and Oak Ridge North as well as the unincorporated community of The Woodlands. 10-mile and 20-mile radius is from the intersection of Research Forest Drive and Grogan’s Mill Rd.

Sources: U.S. Census, Esri forecasts, and Howard Hughes Holdings Inc.

Montgomery County

Labor Market Information

COVERED EMPLOYMENT Industrial Sector	Number of Jobs			Quarter Chg		Annual Chg		Avg Wkly Wage*
	3RD QTR 2024	2ND QTR 2024	3RD QTR 2023	Actual	%	Actual	%	
Total Employment	227,417	229,382	222,392	-1,965	-0.9%	5,025	2.3%	\$1,458
Natural Resources & Mining	5,616	5,567	5,248	49	0.9%	368	7.0%	\$3,850
Construction	16,175	15,371	15,328	804	5.2%	847	5.5%	\$1,587
Manufacturing	13,117	13,172	12,450	-55	-0.4%	667	5.4%	\$1,994
Trade, Transportation, & Utilities	46,993	46,801	45,456	192	0.4%	1,537	3.4%	\$1,409
Information	1,980	2,002	2,089	-22	-1.1%	-109	-5.2%	\$ 1,668
Financial Activities	10,971	11,071	11,182	-100	-0.9%	-211	-1.9%	\$2,289
Professional & Business Services	30,366	31,022	30,975	-656	-2.1%	-609	-2.0%	\$2,284
Education & Health Services	29,904	29,840	29,557	64	0.2%	347	1.2%	\$1,189
Leisure & Hospitality	32,478	32,595	31,963	-117	-0.4%	515	1.6%	\$509
Other Services	7,218	7,227	6,736	-9	-0.1%	482	7.2%	\$910
Nonclassifiable	222	171	238	51	29.8%	-16	-6.7%	\$928
Public Administration	32,375	34,543	31,169	-2,168	-6.3%	1,206	3.9%	\$1,066
Federal Government	1,526	1,509	1,489	17	1.1%	37	2.5%	\$1,750
State Government	600	588	556	12	2.0%	44	7.9%	\$1,343
Local Government	30,249	32,446	29,124	-2,197	-6.8%	1,125	3.9%	\$1,029

*Wages compiled from 1st quarter 2024 contribution and wage reports submitted to the Texas Workforce Commission by employers' subject to the Texas Unemployment Compensation Act. Data source: the Texas Workforce Commission, Labor and Career Market Information Department in cooperation with the Bureau of Labor Statistics, U.S. Department of Labor.

Montgomery County

Labor Market Information

Historical Employment Highlights

	All-Time High	All-Time High Quarter	All-Time Low	All-Time Low Qtr
Total	229,382	2024.2	85,474	2003.3
Natural Resources and Mining	6,194	2014.3	1,234	2004.1
Construction	16,175	2024.3	7,099	2003.2
Manufacturing	13,702	2014.4	6,559	2003.4
Trade, Transportation, and Utilities	47,019	2023.4	19,294	2003.2
Information	2,099	2023.4	824	2011.1
Financial Activities	11,654	2023.2	4,722	2003.2
Professional and Business Services	31,752	2022.4	10,139	2004.3
Education and Health Services	29,904	2024.3	8,131	2003.2
Leisure and Hospitality	32,595	2024.2	10,219	2003.3
Other Services	7,227	2024.2	3,039	2004.4
Federal Government	1,527	2020.3	542	2004.2
State Government	600	2024.3	359	2003.4
Local Government	32,446	2024.2	11,957	2004.3

Average Change from Previous Quarter

	1st Qtr Avg Chg #	1st Qtr Avg Chg %	2nd Qtr Avg Chg #	2nd Qtr Avg Chg %
Total	275	0.3%	2,307	1.7%
Natural Resources and Mining	119	4.1%	0	0.8%
Construction	57	0.5%	152	1.7%
Manufacturing	183	2.0%	-10	0.1%
Trade, Transportation, and Utilities	-424	-1.2%	147	0.6%
Information	7	0.7%	20	1.8%
Financial Activities	22	0.4%	207	3.0%
Professional and Business Services	137	1.1%	411	2.2%
Education and Health Services	229	1.4%	184	1.3%
Leisure and Hospitality	144	1.0%	834	4.6%
Other Services	43	1.4%	195	3.8%
Federal Government	12	1.8%	36	4.0%
State Government	8	1.9%	1	0.2%
Local Government	-348	-0.7%	142	0.7%

Average Change from Previous Quarter

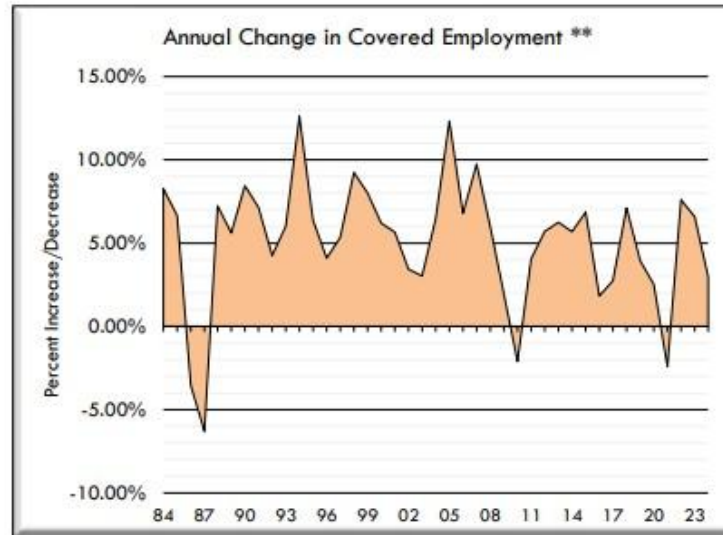
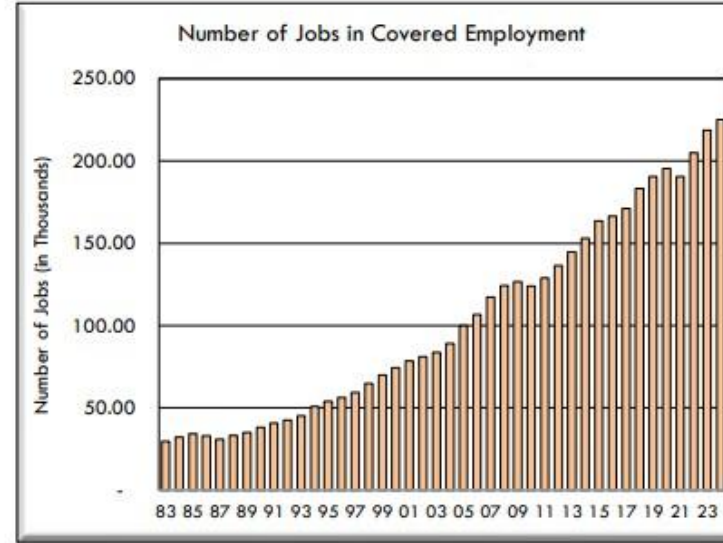
	3rd Qtr Avg Chg #	3rd Qtr Avg Chg %	4th Qtr Avg Chg #	4th Qtr Avg Chg %
Total	253	0.2%	3,879	2.5%
Natural Resources and Mining	40	1.7%	48	1.3%
Construction	138	1.6%	78	0.5%
Manufacturing	21	0.3%	115	1.1%
Trade, Transportation, and Utilities	396	1.3%	1,106	3.6%
Information	17	1.2%	7	0.4%
Financial Activities	62	1.1%	3	-0.4%
Professional and Business Services	168	0.8%	229	1.2%
Education and Health Services	227	1.3%	386	2.2%
Leisure and Hospitality	389	2.0%	-333	-1.6%
Other Services	36	1.0%	-89	-1.9%
Federal Government	5	0.5%	-6	-0.1%
State Government	4	0.8%	-2	-0.5%
Local Government	-1,258	-5.6%	2,341	10.9%

Montgomery County

Labor Market Information

Montgomery County 1983-2024 Covered Employment**

YEAR	JOBS	+ / (-)	% +/-
83	29,735		
84	32,193	2,458	8.3%
85	34,334	2,141	6.7%
86	33,117	(1,217)	-3.5%
87	31,030	(2,087)	-6.3%
88	33,280	2,250	7.3%
89	35,145	1,865	5.6%
90	38,111	2,966	8.4%
91	40,829	2,718	7.1%
92	42,566	1,737	4.3%
93	45,121	2,555	6.0%
94	50,812	5,691	12.6%
95	54,048	3,236	6.4%
96	56,264	2,216	4.1%
97	59,278	3,014	5.4%
98	64,752	5,474	9.2%
99	69,938	5,186	8.0%
00	74,276	4,338	6.2%
01	78,475	4,199	5.7%
02	81,168	2,693	3.4%
03	83,613	2,445	3.0%
04	89,019	5,406	6.5%
05	99,994	10,975	12.3%
06	106,787	6,793	6.8%
07	117,189	10,402	9.7%
08	124,210	7,021	6.0%
09	126,631	2,421	1.9%
10	123,943	(2,688)	-2.1%
11	128,972	5,029	4.1%
12	136,319	7,347	5.7%
13	144,822	8,503	6.2%
14	153,042	8,220	5.7%
15	163,531	10,489	6.9%
16	166,508	2,977	1.8%
17	171,069	4,561	2.7%
18	183,238	12,169	7.1%
19	190,487	7,249	4.0%
20	195,280	4,793	2.5%
21	190,577	(4,703)	-2.4%
22	205,057	14,480	7.6%
23	218,543	13,486	6.6%
24	225,051	6,508	3.0%



**Data Compiled from 1st quarter contribution and wage reports submitted to the Texas Workforce Commission by employers' subject to the Texas Unemployment Compensation Act. For more information on a specific industry, please call 832/681-2535. Data source: the Texas Workforce Commission, Labor Market and Career Information Department in cooperation with the Bureau of Labor Statistics, U.S. Department of Labor.

Montgomery County

Labor Market Information

Gulf Coast** 2023 Wages*

(High-Skill High-Growth Occupations Targeted by the Gulf Coast Workforce Board)

Std. Occ. Code	Occupation	Average Hourly Wage	Average Annual Wage	Employment
13-2011	Accountants & Auditors	\$45.78	\$95,229	22,710
49-3023	Automotive Service Technicians and Mechanics	\$25.16	\$52,323	14,850
43-3031	Bookkeepers, Acctg and Auditing Clerks	\$22.88	\$47,391	32,450
49-3031	Bus and Truck Mechanics and Diesel Engine Specialists	\$28.49	\$59,249	6,960
53-3052	Bus Drivers, Transit and Intercity	\$23.22	\$48,300	3,360
13-1020	Buyers and Purchasing Agents	\$37.19	\$77,359	9,480
47-2031	Carpenters	\$23.82	\$49,534	10,270
41-2011	Cashiers	\$13.59	\$28,264	67,120
39-9011	Childcare Workers	\$13.79	\$28,686	12,200
17-2051	Civil Engineer	\$48.19	\$100,242	9,630
15-1232	Computer User Support Specialists	\$27.93	\$58,085	13,000
47-2061	Construction Laborers	\$19.04	\$39,613	34,550
35-2012	Cooks, Institution and Cafeteria	\$15.72	\$32,691	7,750
35-2014	Cooks, Restaurant	\$15.13	\$31,471	30,590
43-4051	Customer Service Representatives	\$19.44	\$40,439	68,830
49-9051	Electrical Power-Line Installers and Repairers	\$37.10	\$77,165	3,510
47-3013	Electrician Helpers	\$21.52	\$44,766	2,090
47-2111	Electricians	\$28.31	\$58,876	19,800
43-6011	Executive Secretaries and Executive Administrative Assistants	\$34.52	\$71,811	7,570
35-3023	Fast Food and Counter Workers	\$12.26	\$25,505	86,280
43-1011	First-Line Supervisors of Office and Administrative Support Workers	\$33.06	\$68,759	39,250
41-1011	First-Line Supervisors of Retail Sales Workers	\$23.92	\$49,744	23,310
35-2021	Food Preparation Workers	\$13.93	\$28,976	26,640
11-9051	Food Service Managers	\$34.90	\$72,600	4,460
11-1021	General and Operations Managers	\$61.76	\$128,470	106,480
39-5012	Hairdressers, Hairstylists, and Cosmetologists	\$18.75	\$38,999	6,210
49-9021	Heating, Air Conditioning, and Refrigeration Mechanics	\$27.92	\$58,069	7,320
49-9041	Industrial Machinery Mechanics	\$32.55	\$67,709	15,910
53-7051	Industrial Truck and Tractor Operator	\$20.90	\$43,480	19,970
37-2011	Janitors and Cleaners, Except Maids and Housekeeping Cleaners	\$14.68	\$30,538	45,960
53-7062	Laborers and Freight Stock, and Material Movers, Hand	\$18.22	\$37,890	58,910
29-2061	Licensed Practical and Licensed Vocational Nurses	\$28.26	\$58,787	11,660
11-9081	Lodging Managers	\$35.28	\$73,391	520
51-4041	Machinists	\$27.18	\$56,545	6,650
11-2021	Marketing Managers	\$74.08	\$154,096	7,940
31-9092	Medical Assistants	\$19.51	\$40,585	16,100
49-3042	Mobile Heavy Equipment Mechanics, Except Engines	\$30.78	\$64,028	5,500
31-1131	Nursing Assistants	\$17.54	\$36,475	18,340
43-9061	Office Clerks, General	\$19.61	\$40,789	39,980
29-1051	Pharmacists	\$65.83	\$136,925	6,840
47-2152	Plumbers, Pipefitters, and Steamfitters	\$28.59	\$59,465	11,710
33-3051	Police and Sheriff's Patrol Officers	\$35.60	\$74,044	14,830
43-5061	Production, Planning, and Expediting Clerks	\$27.18	\$56,528	7,990
43-4171	Receptionists and Information Clerks	\$16.54	\$34,400	23,060
29-1141	Registered Nurses	\$45.31	\$94,250	62,550
41-2031	Retail Salespersons	\$16.22	\$33,740	72,840
47-5071	Roustabouts, Oil and Gas	\$23.94	\$49,785	4,570
41-4012	Sales Representatives, Wholesale and Manufacturing, except Technical and Scientific Products	\$36.85	\$76,649	26,070
43-6014	Secretaries and Administrative Assistants, Except Legal, Medical, and Executive	\$20.81	\$43,285	36,890
33-9032	Security Guards	\$16.83	\$35,006	27,890
53-7065	Stockers and Order Fillers	\$17.94	\$37,320	61,780
53-1047	Supervisors of Transportation and Material Moving Workers, Exc. Aircraft Cargo Handling	\$29.97	\$62,337	14,200
53-3032	Truck Drivers, Heavy or Tractor-Trailer	\$26.52	\$55,156	48,570
53-3033	Truck Drivers, Light or Delivery Services	\$22.18	\$46,126	17,380
51-4121	Welders, Cutters, Solderers, and Brazers	\$27.10	\$56,372	16,930

*Data compiled by the Texas Workforce Commission, LMI&D Dept. in cooperation with the Bureau of Labor Statistics as part of the Occupational Employment Survey. Employment is the estimate of employment based upon the sample, not the sample employees. Wages for the CES survey are straight-line, gross pay, exclusive of premium pay, base rate, cost-of-living allowances, guaranteed pay, hazard-duty pay, incentive pay including commissions and production bonuses, tips, and on-call pay are included. Excluded are back pay, jury duty pay, overtime pay, severance pay, shift differentials, nonproduction bonuses, employer cost of supplementary benefits, and tuition reimbursement. **The Gulf Coast Region is defined as Austin, Brazoria, Chambers, Colorado, Fort Bend, Galveston, Harris, Liberty, Matagorda, Montgomery, Walker, Waller, and Wharton Counties.

Shannon Thornton
C: 936-520-8138



AMERICAN
FARM RANCH
CHARTER MEMBER

936-597-3301
TXLAND.COM
since 1967

FARM + RANCH · RESIDENTIAL · LAND DEVELOPMENT · COMMERCIAL

Jacobs Properties

we're all over Texas

