

**UNDER CONTRACT!! Spacious 4-bedroom 2-bathroom
brick home in Duplin County, NC!
117 S Thomas Street
Beulaville, NC 28518**

\$234,000
0.11± Acres
Duplin County



**UNDER CONTRACT!! Spacious 4-bedroom 2-bathroom brick home in Duplin County, NC!
Beulaville, NC / Duplin County**

SUMMARY

Address

117 S Thomas Street

City, State Zip

Beulaville, NC 28518

County

Duplin County

Type

Residential Property, Single Family

Latitude / Longitude

34.922730 / -77.772397

Dwelling Square Feet

2,474

Bedrooms / Bathrooms

4 / 2

Acreage

0.11

Price

\$234,000

Property Website

<https://www.mossyoakproperties.com/property/under-contract-spacious-4-bedroom-2-bathroom-brick-home-in-duplin-county-nc-duplin/north-carolina/91342/>



TOTAL: 2474 sq. ft.
FLOOR 1: 1770 sq. ft. FLOOR 2: 704 sq. ft.
EXCLUDED AREAS: PORCH: 100 sq. ft. COVERED PATIO: 137 sq. ft. UTILITY: 5 sq. ft.



**UNDER CONTRACT!! Spacious 4-bedroom 2-bathroom brick home in Duplin County, NC!
Beulaville, NC / Duplin County**

PROPERTY DESCRIPTION

Priced to sell! Spacious 4-bedroom 2-bathroom brick home in Beulaville, NC.

Spacious 4BR/2BA home with over 2,400 heated sq ft. Open kitchen/den with formal dining and built-ins. Updated kitchen with large island. Split bedroom layout with private primary suite and two additional main-level bedrooms. Large laundry with sink, cabinetry, and carport access. Upstairs features a bonus room, 4th bedroom, and ample storage. Brick exterior, covered front porch, carport, and spacious driveway. Walking distance to the park, close to schools, and just 20 minutes to Jacksonville. Motivated seller-bring offers! Move-in ready-photos include virtual staging.

For more information on this and other land for sale in Duplin County, contact Casey Davis at [910-330-9506](tel:910-330-9506) or by email at casey@mossyoakproperties.com, or visit landandfarmsrealty.com.

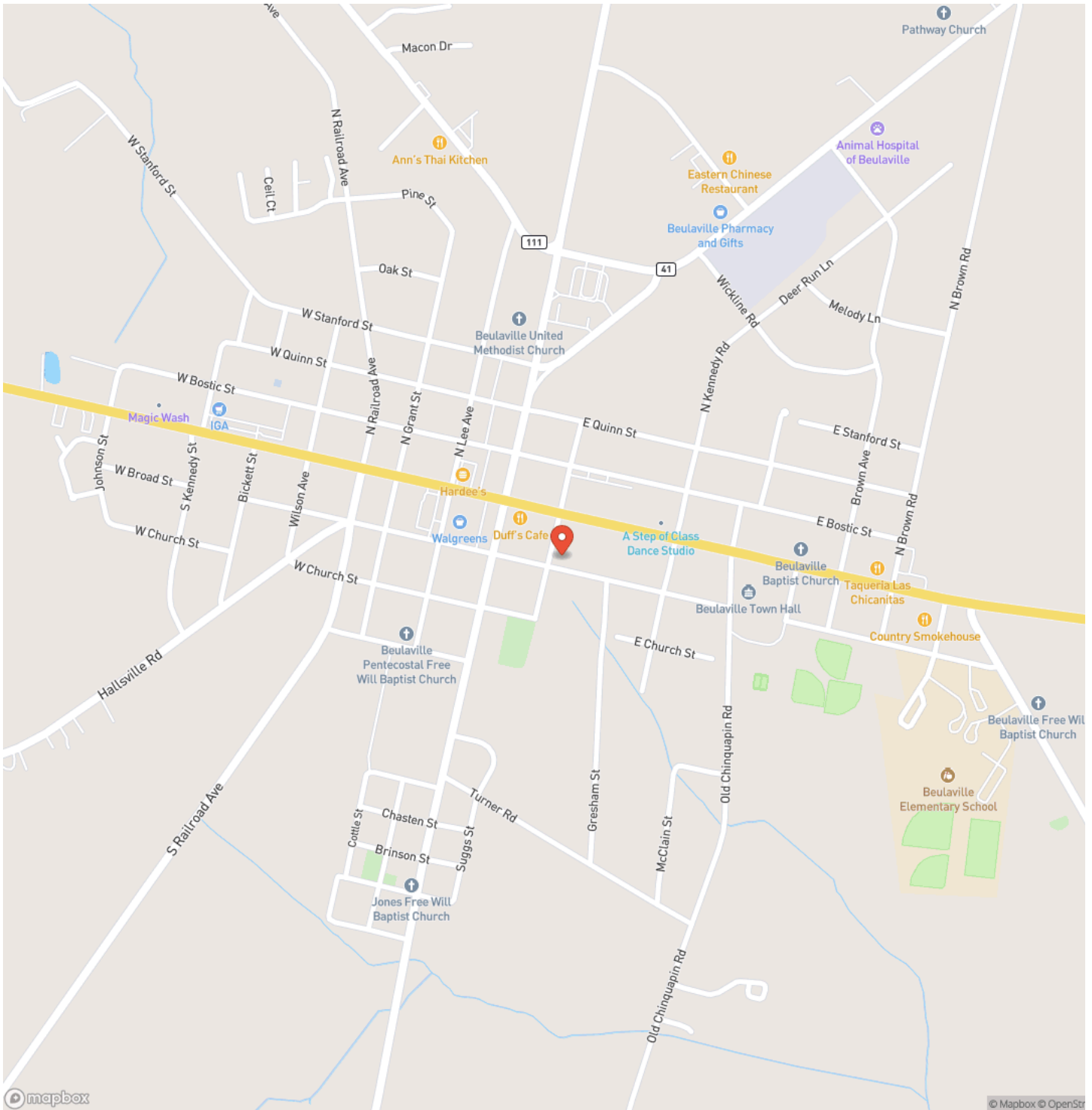


**UNDER CONTRACT!! Spacious 4-bedroom 2-bathroom brick home in Duplin County, NC!
Beulaville, NC / Duplin County**



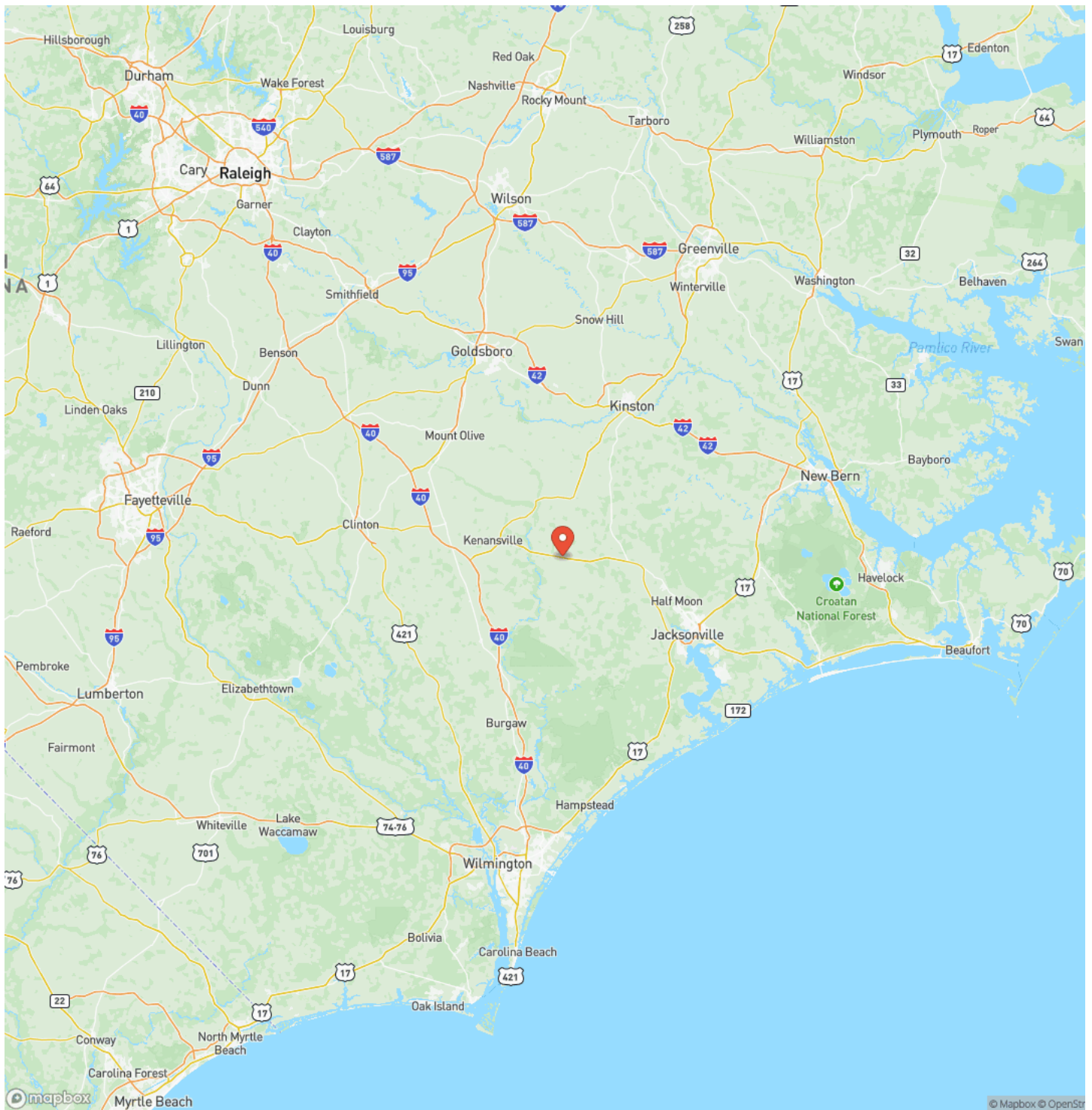
**UNDER CONTRACT!! Spacious 4-bedroom 2-bathroom brick home in Duplin County, NC!
Beulaville, NC / Duplin County**

Locator Map



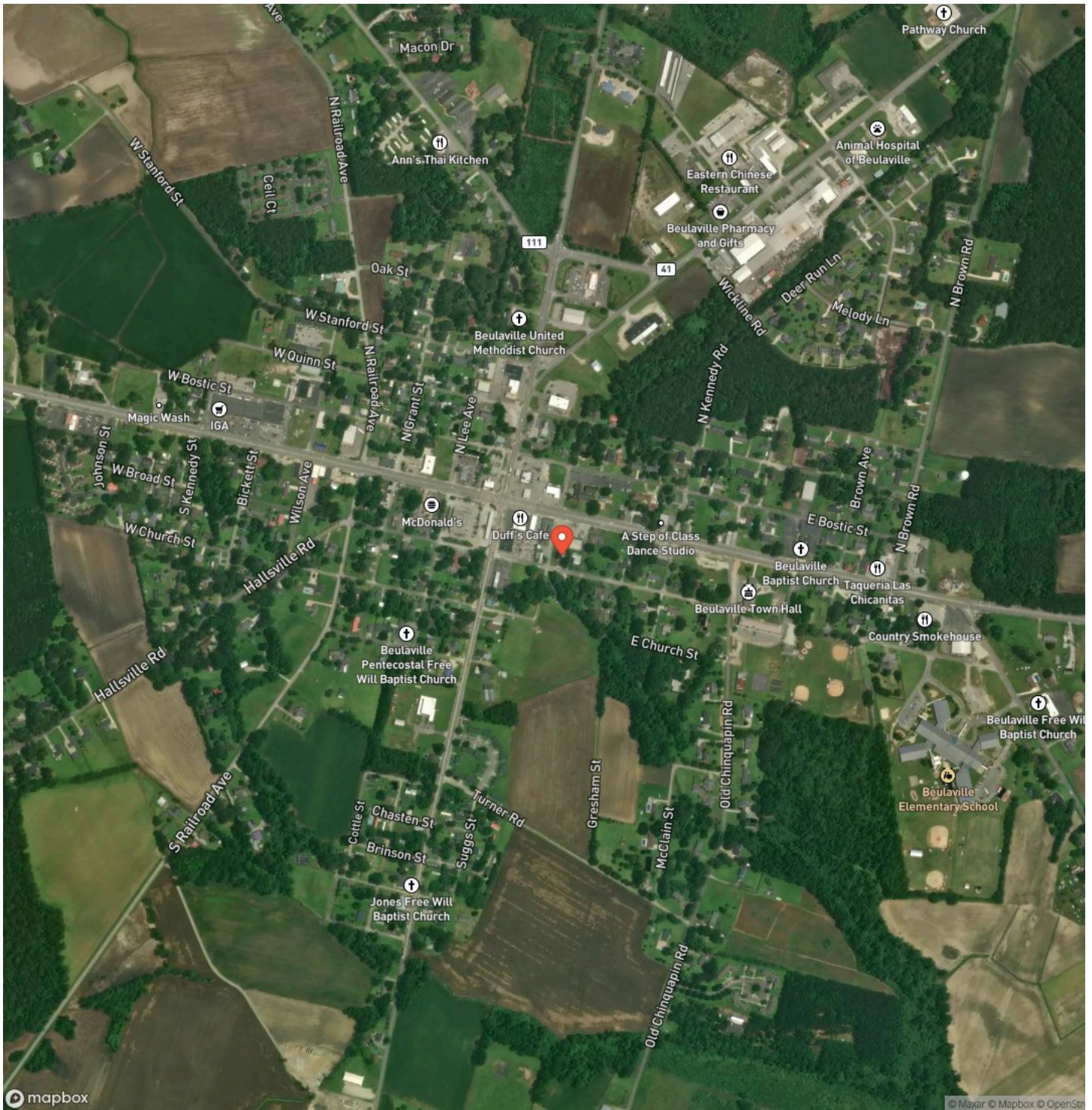
**UNDER CONTRACT!! Spacious 4-bedroom 2-bathroom brick home in Duplin County, NC!
Beulaville, NC / Duplin County**

Locator Map



**UNDER CONTRACT!! Spacious 4-bedroom 2-bathroom brick home in Duplin County, NC!
Beulaville, NC / Duplin County**

Satellite Map



DISCLAIMERS

Information in this brochure is provided solely for information purposes and does not constitute an offer to sell or advertise real estate outside the states in which broker or agent licensed. The information presented has been obtained from sources deemed to be reliable, but is not guaranteed or warranted by the agent, broker, or the sellers of these properties. This offering is subject to errors, omissions, prior sale, price change, correction or withdrawal from the market without notice. All references to age, square footage, income, expenses, acreage, carrying capacity, and land classification, etc. are approximate. Prospective buyers are chargeable with and expected to conduct their own independent investigation of the information and the property and to rely only on those results. Sellers reserve the right to accept or reject any and all offers without liability to any buyer or cooperating broker.

Maps are provided for illustration purposes only, the accuracy is not warranted. Parcels on interactive maps are not adjusted to match aerial backgrounds. This information is for reference purposes only and is not a legal document. Data maps contain errors. The seller and seller's agent are making known to all potential buyers that there may be variations between the location of the existing fence lines and the legal description of the deeded property. Seller and seller's agent make no warranties with regard to the location of the fence lines in relationship to the deeded property lines, nor does the Seller make any warranties or representations with regard to the specific acreage contained within the fenced property lines. Seller is selling the property in an "as is" condition, which includes the location of the fences as they exist. Boundaries shown on the accompanying maps are approximate, based on county parcel data. The maps are not to scale. The accuracy of the maps is not guaranteed. Prospective buyers are encouraged to verify fence lines, deeded property lines and acreages using a licensed surveyor at their own expense.



Mossy Oak Properties Land and Farms Realty
101 Budleigh Street, Suite F
Manteo, NC 27954
(844) 480-5263
<https://www.mossoakproperties.com/>

