

LAND FOR SALE



Antelope County Recreation

177.62 ± ACRES | ANTELOPE COUNTY, NEBRASKA

Paddocks of fenced native pasture provide excellent grazing as well as limitless recreational opportunities, with accents of mature trees creating a great balance of habitat for area wildlife.



Adam D. Pavelka, JD

LISTING AGENT:

ADAM D. PAVELKA, J.D.

C: 402.984.7744

E: Adam@AgriAffiliates.com

View Full Brochure
& Listing



Offered exclusively by:



AGRI AFFILIATES, INC.
Providing Farm & Ranch Real Estate Services

Hastings, NE • **AgriAffiliates.com** • 402.519.2777

Information contained herein was obtained from sources deemed reliable. We have no reason to doubt the accuracy, but the information is not guaranteed. Prospective Buyers should verify all information. All maps provided by Agri Affiliates, Inc. are approximations only, to be used as a general guideline, and not intended as survey accurate. As with any agricultural land, this property may include noxious weeds. Agri Affiliates, Inc. and all agents are acting as Agent of the Seller.



PROPERTY INFORMATION

LEGAL DESCRIPTION:

177.62 ± acres in the East Half (E½) of Section Nineteen (19), Township Twenty-Six (26) North, Range Five (5) West of the 6th P.M., Antelope County, Nebraska (to be determined by a survey).

LOCATION:

From Neligh, Nebraska: 5 miles north on Highway 14, then 4 ½ miles east on 854th Road, to the southwestern corner of the property.

ACRES & TAXES:

Estimated Tax-assessed Acres | 177.62 ± acres
Estimated 2024 Real Estate Taxes | \$1,576.35

LEASES:

Full possession at closing!

NRD:

Upper Elkhorn Natural Resources District.

WELL INFORMATION:

Well Registration - G-155106 (Stock Well)

- Completion Date - 11/28/2009
- Well Depth - 80 feet
- Static Water Level - 26 feet
- Pumping Level - 32 feet
- Column - 1 inch
- Gallons/Minute - 14 gpm

EQUIPMENT:

Stock well (cattle panels and hay bales are excluded from this offering).

FSA INFORMATION:

Total Farmland: 311.22 acres
Total Cropland: 135.56 acres

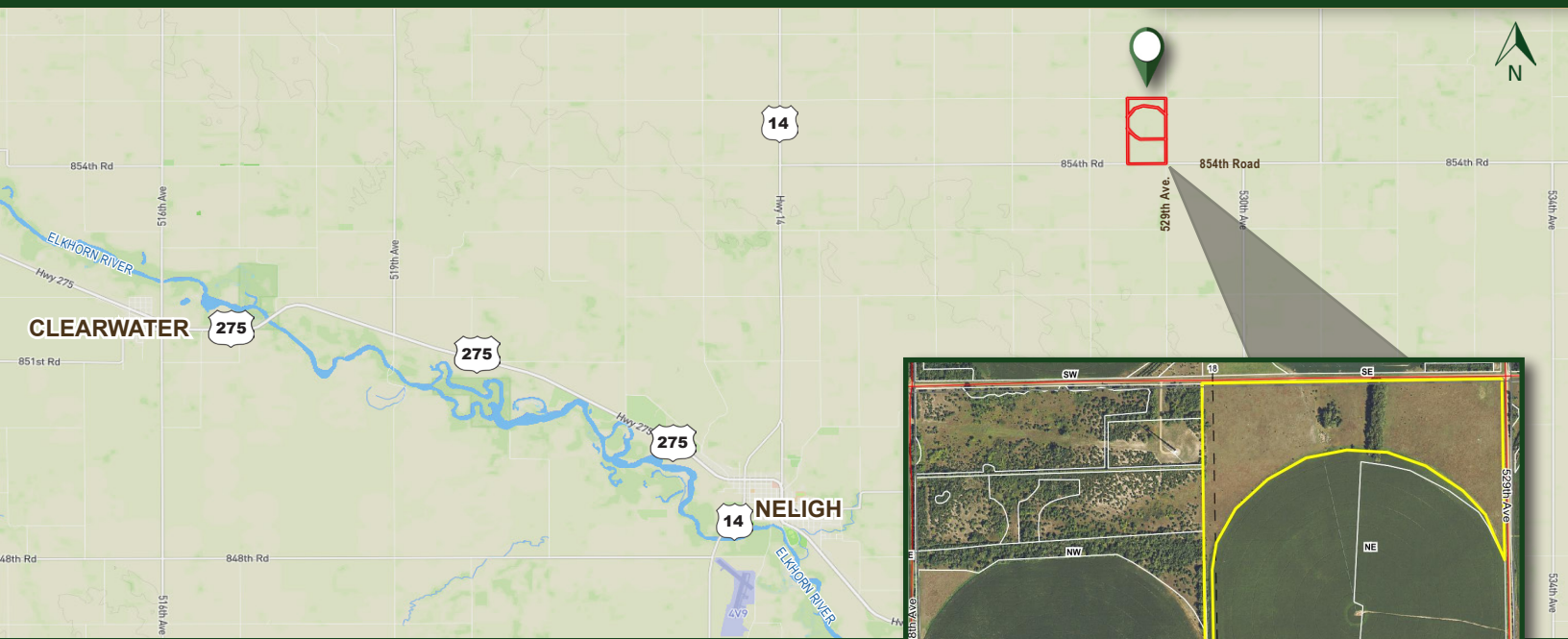
COMMENTS:

Within a very manageable drive of regional urban centers; O'Neill, Nebraska: approximately 45 minutes; Norfolk, Nebraska: approximately 40 minutes; Lincoln, Nebraska: approximately 2 hours; Omaha, Nebraska: approximately 2 hours; and Sioux City, Nebraska: approximately 1.5 hours. Nice tracts of native pasture with perfect accents of mature trees, creates a great balance of habitat for area wildlife. This area is known for its great deer, turkey, and growing upland game populations.

PRICE:

\$636,050.00 - 177.62 ± acres of pasture







Don't miss this opportunity to purchase endless recreational opportunities with native pasture, mature trees and abundant area wildlife!



AGRI AFFILIATES, INC.
Providing Farm & Ranch Real Estate Services

Hastings, NE • **AgriAffiliates.com** • 402.519.2777