

# Charming 7 +/- Acre Multi-Dwelling Property

## 589 Simpson Hwy 28, Pinola, MS



**This 7± acre property in Simpson County, MS, features two homes set against a picturesque backdrop of lush pasture land, offering tranquility and functionality. The location provides the peace of the countryside while remaining conveniently close to local amenities and major roads. The first home is a snug one-bedroom, one-bathroom manufactured house, great for small families or renting out. The second home has a big main bedroom with a separate bathroom, plus two extra rooms for family or guests. There's a lovely covered porch where you can relax and enjoy the views of the countryside. This place is also a wise investment opportunity, with the potential to rent out both homes or even build more. It's a slice of country paradise waiting for someone to make it their own in Simpson County, MS. Whether you're looking for a peaceful family home or a promising investment, this property offers both. Call Dale or David to schedule your showing**



**DALE WILDS**  
REALTOR®

O: 601.898.2772 | C: 662.715.7109  
Dale@TomSmithLand.com



Expect More. Get More.



**DAVID BELDEN**  
ALC®, REALTOR®

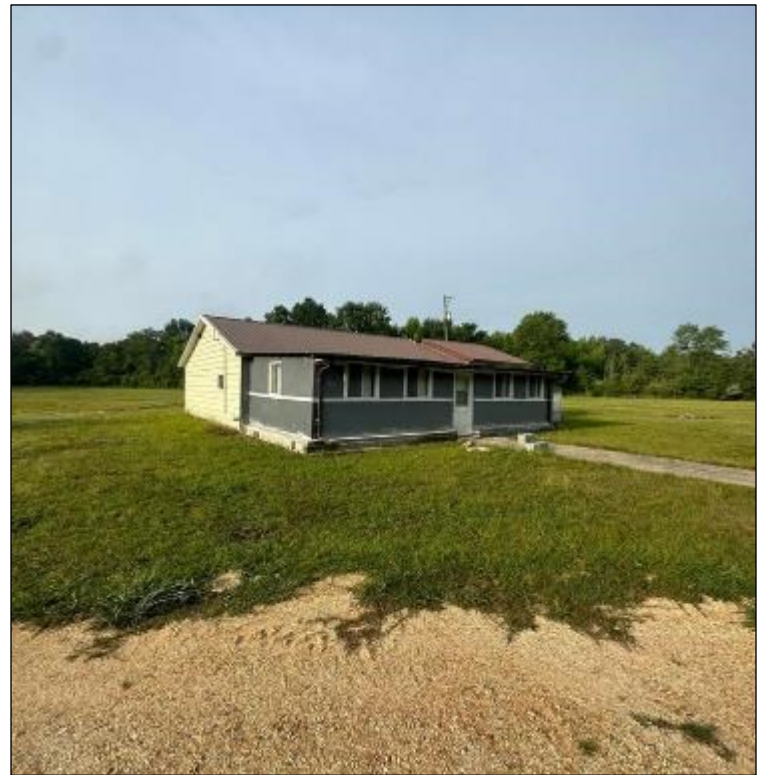
O: 601.898.2772 | C: 601.415.3884  
DBelden@TomSmithLand.com

**TomSmithLandandHomes.com**

Information is believed to be accurate but not guaranteed.







**DALE WILDS**  
REALTOR®

O: 601.898.2772 | C: 662.715.7109  
Dale@TomSmithLand.com



**DAVID BELDEN**  
ALC®, REALTOR®

O: 601.898.2772 | C: 601.415.3884  
DBelden@TomSmithLand.com

**TomSmithLandandHomes.com**

Information is believed to be accurate but not guaranteed.







**DALE WILDS**  
REALTOR®

O: 601.898.2772 | C: 662.715.7109  
Dale@TomSmithLand.com



**DAVID BELDEN**  
ALC®, REALTOR®

O: 601.898.2772 | C: 601.415.3884  
DBelden@TomSmithLand.com

**TomSmithLandandHomes.com**

Information is believed to be accurate but not guaranteed.







**DALE WILDS**  
REALTOR®

O: 601.898.2772 | C: 662.715.7109  
Dale@TomSmithLand.com



**DAVID BELDEN**  
ALC®, REALTOR®

O: 601.898.2772 | C: 601.415.3884  
DBelden@TomSmithLand.com

**TomSmithLandandHomes.com**

Information is believed to be accurate but not guaranteed.





# Aerial Map



[CLICK HERE FOR AN INTERACTIVE MAP](#)

**DALE WILDS**  
REALTOR®

O: 601.898.2772 | C: 662.715.7109  
Dale@TomSmithLand.com



**DAVID BELDEN**  
ALC®, REALTOR®

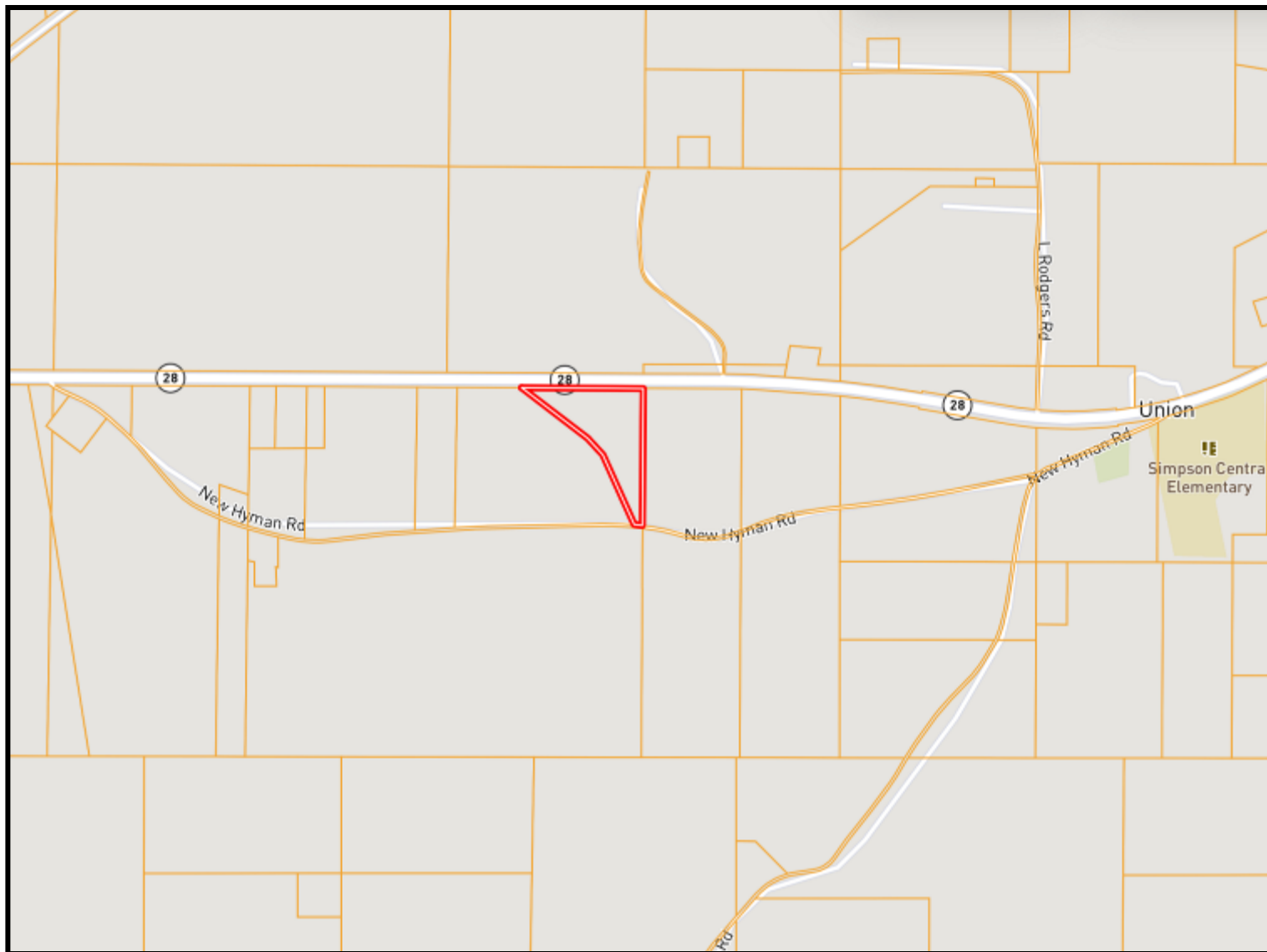
O: 601.898.2772 | C: 601.415.3884  
DBelden@TomSmithLand.com

**TomSmithLandandHomes.com**

Information is believed to be accurate but not guaranteed.



# Ownership Map



**DALE WILDS**  
REALTOR®

O: 601.898.2772 | C: 662.715.7109  
Dale@TomSmithLand.com



**DAVID BELDEN**  
ALC®, REALTOR®

O: 601.898.2772 | C: 601.415.3884  
DBelden@TomSmithLand.com

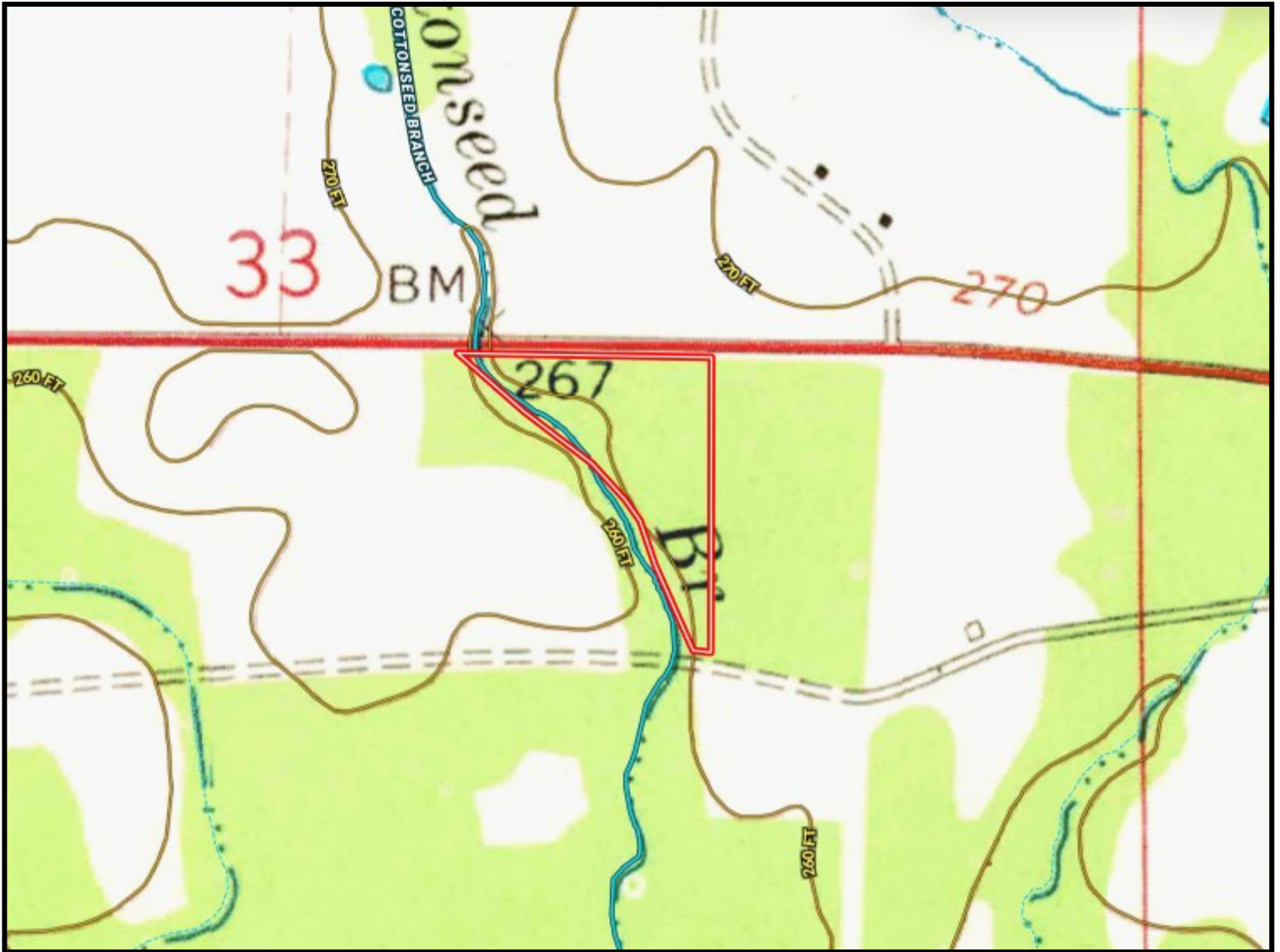
**TomSmithLandandHomes.com**

Information is believed to be accurate but not guaranteed.





# Topography Map



**DALE WILDS**  
REALTOR®

O: 601.898.2772 | C: 662.715.7109  
Dale@TomSmithLand.com



**DAVID BELDEN**  
ALC®, REALTOR®

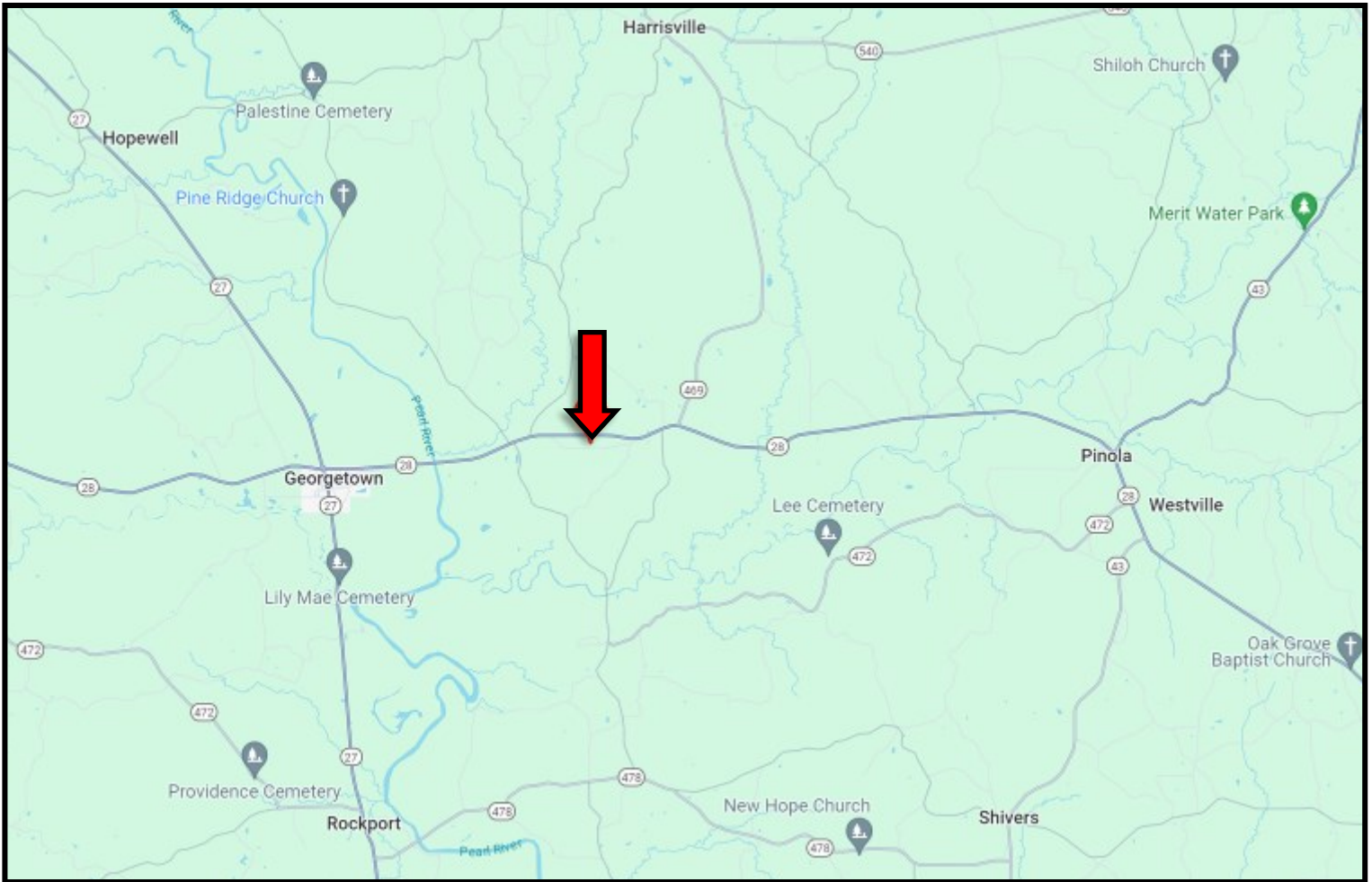
O: 601.898.2772 | C: 601.415.3884  
DBelden@TomSmithLand.com

**TomSmithLandandHomes.com**

Information is believed to be accurate but not guaranteed.



# Directional Map



**Directions from Hwy 28 and Hwy 43 in Pinola, MS: Travel Hwy 28W for 8.4 miles. The property entrance will be on the left.**

**589 Simpson Hwy 28 Pinola, MS 39149—Click for Google Map Link**



**DALE WILDS**  
REALTOR®

O: 601.898.2772 | C: 662.715.7109  
Dale@TomSmithLand.com



**Expect More. Get More.**



**DAVID BELDEN**  
ALC®, REALTOR®

O: 601.898.2772 | C: 601.415.3884  
DBelden@TomSmithLand.com

**TomSmithLandandHomes.com**

Information is believed to be accurate but not guaranteed.

