

160± Acres with a 2,500± SF Home | \$1,100,000

1155 Breedlove Road, Michigan City, MS 38647 | Benton & Marshall Counties



This 160± acre farm is divided between Benton & Marshall Counties, MS, and is on the border of the Mississippi and Tennessee state lines. The 2,500± SF home is situated on a little over 4± acres with three covered shops and a two-car garage. This house offers a three bed, two full bath, with an office for you to call home. The remaining acres consist of farmland and woods. The entire property is fenced and was previously a cattle farm. The property now consists of farmland being farmed for soybeans, and the remaining crop ground is farmed for hay. The fertile land has a three-phase electric well system to water the crops and can be used to fill the fishing pond year-round. This property has a live creek flowing through it that the native turkey and deer love to travel up and down throughout the property. Give Anthony a call to schedule your private showing today!



**ANTHONY
STEEN**
REALTOR®

Office: 662.441.2500

Cell: 662.645.5151

Anthony@TomSmithLand.com



A Real Estate Expert You Can Trust

TomSmithLandandHomes.com

Information is believed to be accurate but not guaranteed.





160± Acres	Office	Vaulted Ceilings in Living Room
2,500± SF Home	3 Shops	Jacuzzi Tub in Primary Bathroom
3 Bedrooms	2-Car Garage	Live Creek Running Through Property
2 Bathrooms	3-Phase Well	



ANTHONY STEEN
 REALTOR®
 Office: 662.441.2500
 Cell: 662.645.5151
 Anthony@TomSmithLand.com



A Real Estate Expert You Can Trust
 TomSmithLandandHomes.com

Information is believed to be accurate but not guaranteed.





ANTHONY STEEN
 REALTOR®
 Office: 662.441.2500
 Cell: 662.645.5151
 Anthony@TomSmithLand.com



A Real Estate Expert You Can Trust
 TomSmithLandandHomes.com

Information is believed to be accurate but not guaranteed.





ANTHONY STEEN
 REALTOR®
 Office: 662.441.2500
 Cell: 662.645.5151
 Anthony@TomSmithLand.com



A Real Estate Expert You Can Trust
 TomSmithLandandHomes.com

Information is believed to be accurate but not guaranteed.





ANTHONY STEEN
 REALTOR®
 Office: 662.441.2500
 Cell: 662.645.5151
 Anthony@TomSmithLand.com



A Real Estate Expert You Can Trust
 TomSmithLandandHomes.com



Information is believed to be accurate but not guaranteed.



ANTHONY STEEN

REALTOR®

Office: 662.441.2500

Cell: 662.645.5151

Anthony@TomSmithLand.com

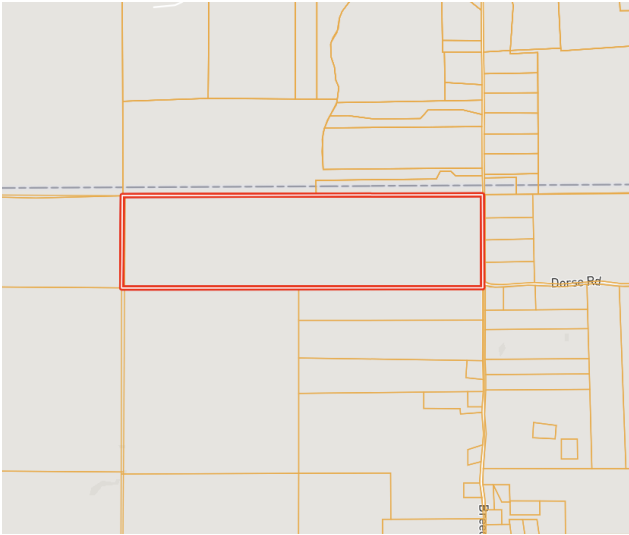


A Real Estate Expert You Can Trust

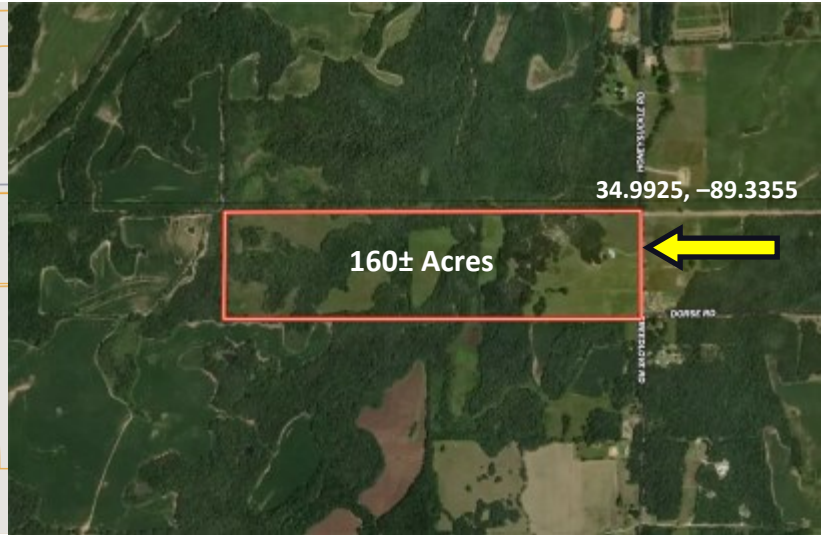
TomSmithLandandHomes.com

Information is believed to be accurate but not guaranteed.

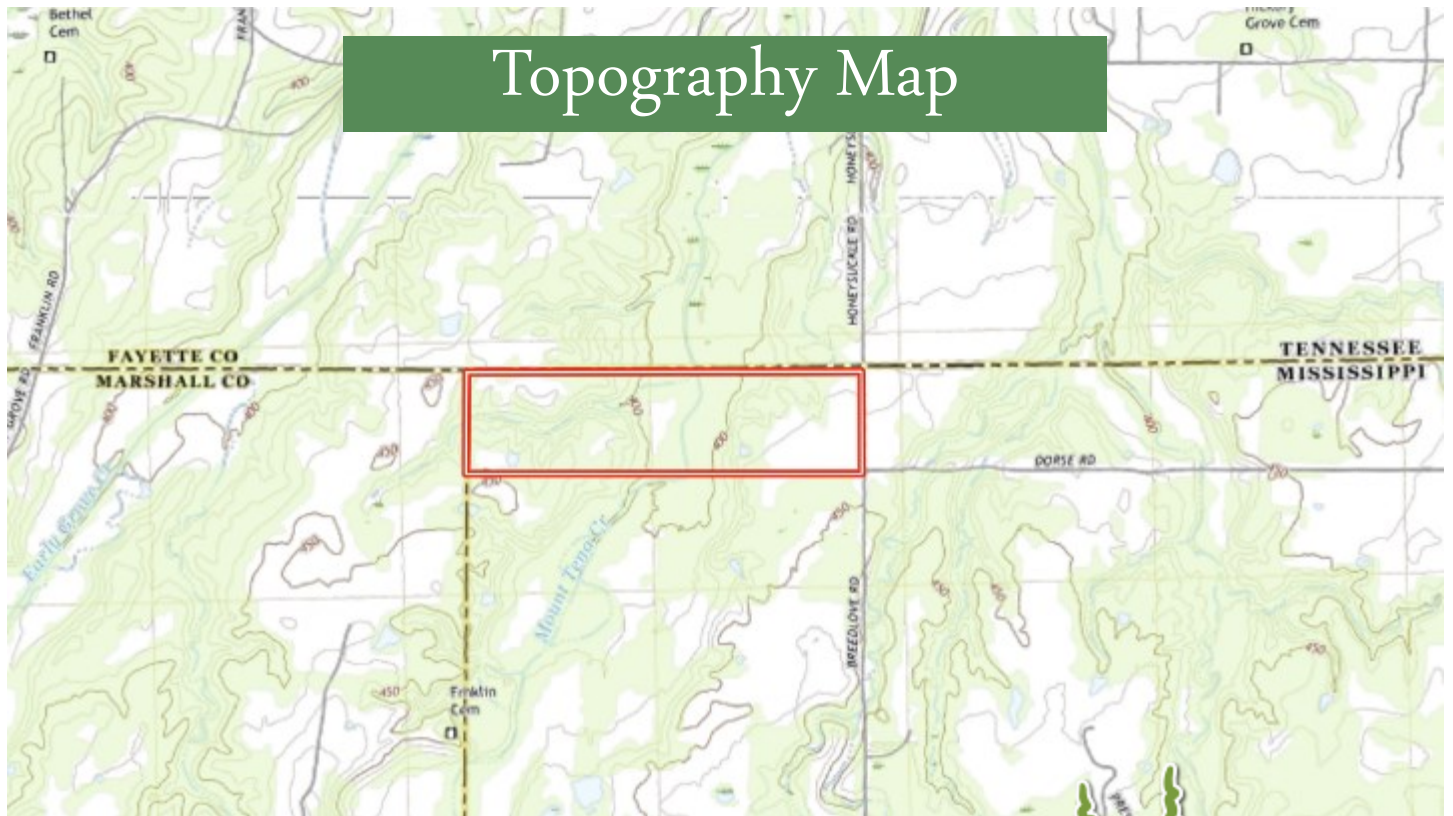




Ownership Map



Aerial Map *click for Interactive Map*



Topography Map

ANTHONY STEEN
REALTOR®
Office: 662.441.2500
Cell: 662.645.5151
Anthony@TomSmithLand.com

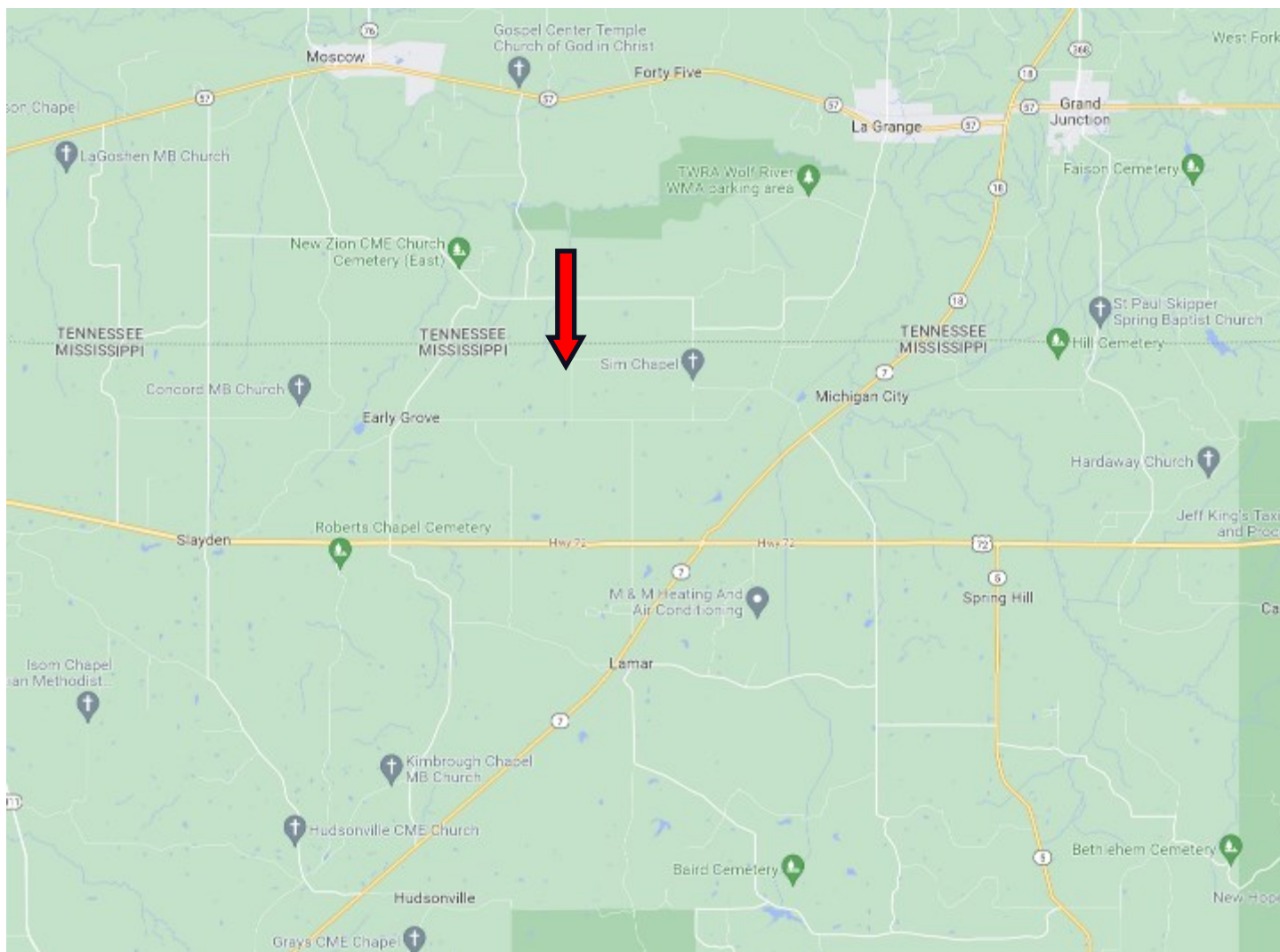


A Real Estate Expert You Can Trust
TomSmithLandandHomes.com

Information is believed to be accurate but not guaranteed.



Directional Map



Directions from Hwy 7 and Hwy 331 in Holly Springs, MS: Travel north on Hwy 7 for 11.6 miles then take a slight left onto Sexton Rd. After 3.5 miles turn left onto Bryan Rd. Travel 1 mile, then turn onto Breedlove Rd. After 1.2 miles, the property will be on the left. [Google Map Link](#)

1155 Breedlove Rd, Michigan City, MS 38647



**ANTHONY
STEEN**
REALTOR®

Office: 662.441.2500
Cell: 662.645.5151
Anthony@TomSmithLand.com



A Real Estate Expert You Can Trust

TomSmithLandandHomes.com

Information is believed to be accurate but not guaranteed.

